



SALES MANAGERS & AUCTIONEERS

**BIG ENOUGH FOR
THE INDUSTRY LEADERS,
YET PERSONAL ENOUGH
FOR AMERICA'S FARMER.**

**AMERICA'S
AUCTION COMPANY**

RACINE, WISCONSIN - FRIDAY, JANUARY 15TH AT 9:30 AM

****ONSITE/VIRTUAL LIVE AUCTION****

2 AUCTIONS IN 1 DAY

UPDATE OF LARGE GROUP TRUCK TRACTORS & THE ESTATE OF NORMAN MANTHE

**(26)TRUCK TRACTORS PLUS A COMPLETE ESTATE OF LATE MODEL
CONSTRUCTION EQUIPMENT, EQUIPMENT TRAILERS, TRUCK TRACTORS**



SYRACUSE (BRIDGEPORT), NEW YORK

OPENS: SAT., JAN. 16TH AT 8:00 AM - CLOSES: WED., JAN. 20TH AT 12:00 NOON

****TIMED AUCTION****

VERY LARGE CONSTRUCTION EQUIPMENT AUCTION

**BOOM LIFTS, SCISSOR LIFTS, FORKLIFTS, SKID STEERS, AIR COMPRESSORS, LIGHT PLANTS, GENERATORS,
VERY LARGE QUANTITY SUPPORT, ATTACHMENTS, TAGALONGS, PICKUPS AND SERVICES TRUCKS**



SPECIAL NOTE: These auctions will be a **Live, In-Person event**. Masks required. All people attending must follow CDC guidelines for social distancing and hand-washing. Thank you in advance for adhering to these requirements, we appreciate your cooperation!

ALEX LYON & SON SALES MANAGERS & AUCTIONEERS, INC.

2021

7697 ROUTE 31, PO BOX 610, BRIDGEPORT, NY 13030 315-633-2944 FAX: 315-633-8010 LYONAUCTION.COM

ONSITE/VIRTUAL LIVE AUCTION

Please feel free to preview any of our Virtual Live or Timed Auction sale sites 5 days before auction day!

RACINE, WISCONSIN - FRIDAY, JANUARY 15TH AT 9:30 AM

ADDRESS: 1821 S.E. Frontage Road, Sturtevant, WI 53177. **NOTE:** Selling in this sale will be a Truck Fleet Updating their Fleet along with an Estate from the Late Norman Manthe. **SPECIAL NOTE:** This part of the auction will be a Live, In-Person event. Masks required. All people attending must follow CDC guidelines for social distancing and hand-washing. Thank you in advance for adhering to these requirements, we appreciate your cooperation! **SALE SITE PHONE:** (262) 903-6269 Chad. **AUCTION CO.:** 223-53 Alex Lyon & Son. **AUCTIONEER:** 1878-52 Jack Lyon. **TERMS & CONDITIONS:** "Cash or Company Check" accompanied by current "Bank Letter of Guarantee", made payable to Alex Lyon & Son. Everything Sells "AS IS, "WHERE IS." *The following charges will apply on all purchases:* (1.) For each unit \$35,001.00 and above, a 5.95% administration fee will be assessed when paying with cash or good check. (The standard fee of 8.95% will be assessed when paying with credit card); and (2.) For each unit \$1,001- \$35,000, a 10% administration fee will be assessed when paying with cash or good check, and a 13% fee will be assessed when paying with credit card. (3.) For each unit \$0- \$1,000, a 12.5% administration fee will be assessed when paying with cash or good check, and a 15.5% fee will be assessed when paying with credit card. ****ONLINE BIDDING: An additional fee of 2.5%, cap of \$700 for each piece.****



FOR BID ONLINE TECHNICAL
ASSISTANCE CALL
Proxibid: (855) 636-6461
Nextlot: (919) 361-1111

26 TRUCK TRACTORS

2015 MACK CXU613 VN:047739 Mack MP8 diesel engine, 505hp, Mack TMD12A0 12 speed transmission, Mack powerleash engine brake, power steering, a/c, 120 volt 1500 watt engine block heater, premium stereo/cd/weatherband/MP3/Bluetooth & Sirius/Cobra weatherband CB radio, Westcoast power/ heated mirrors, 142 gallon aluminum fuel tanks, 48in. flat top sleeper, 14,600lb Meritor fronts, 46,000lb Meritor rears, Mack air suspension, 3.21 ratio, 11R22.5 tires, tandem axle.

2015 MACK CXU613 VN:047730 Mack MP8 diesel engine, 505hp, Mack TMD12A0 12 speed transmission, Mack powerleash engine brake, power steering, a/c, 120 volt 1500 watt engine block heater, premium stereo/cd/weatherband/MP3/Bluetooth & Sirius/Cobra weatherband CB radio, Westcoast power/ heated mirrors, (2) 72 gallon aluminum fuel tanks, sleeper, 14,600lb Meritor fronts, 46,000lb Meritor rears, Mack air suspension, 3.21 ratio, 11R22.5 tires, tandem axle.

2015 MACK CXU613 VN: 047738 Mack MP8 diesel engine, 505hp, Mack TMD12A0 12 speed transmission, Mack powerleash engine brake, power steering, a/c, 120 volt 1500 watt engine block heater, premium stereo/cd/weatherband/MP3/Bluetooth & Sirius/Cobra weatherband CB radio, Westcoast power/ heated mirrors, (2) 72 gallon aluminum fuel tanks, 14,600lb Meritor fronts, 46,000lb Meritor rears, Mack air suspension, 3.21 ratio, 11R22.5 tires, tandem axle.



2015 MACK CXU613 VN:47755 Mack MP8 diesel engine, 505hp, Mack MDrive automatic transmission, Mack powerleash engine brake, a/c, premium stereo/cd/weatherband/MP3/Bluetooth & Sirius/Cobra weatherband CB radio, power/ heated mirrors, (2) 72 gallon aluminum fuel tanks, 14,600lb Front axle, 46,000lb rears, air suspension, 3.21 ratio, like NEW 11R22.5 tires, tandem axle.

2014 MACK CXU613 VN:038541 Mack MP8 diesel engine, 455hp, Eaton 10 speed transmission, power steering, engine brake, aluminum fuel tanks, 70in. Hi-rise sleeper w/ air fairings, 12,000lb fronts, Meritor 40,000lb w/ power divider lock out rears, Mack 40,000lb air ride suspension, aluminum rims, tandem axle.



2014 MACK CXU613 VN:038643 Mack MP8 diesel engine, 505hp, Mack TMD12A0 12 speed transmission, Mack engine brake, power steering, a/c, 120 volt 1500 watt engine block heater, Cobra weatherband CB radio, Westcoast power/ heated mirrors, electronic keyless entry, (2) 72 gallon aluminum fuel tanks, 180in. wheelbase, 14,600lb Meritor fronts, 46,000lb Meritor rears, Mack air suspension, 3.21 ratio, Michelin 295/80R22.5 front tires, Goodyear 11R22.5 rear tires, tandem axle.

2006 MACK CHN613 VN:N002211 Mack diesel engine, 460hp, Maxitorque 18 speed transmission, power steering, headache rack, lightbar, air ride suspension, 44,00lb rears, air lift third axle, aluminum wheels, 11R24.5 tires, triaxle.



2014 FREIGHTLINER VN:1FUJGEDV1FLGK2953 Detroit DD13 diesel engine, 13 speed transmission, power steering, tandem axle.

2014 FREIGHTLINER VN:1FUJGEDV8FLGK2951 Detroit DD13 diesel engine, 13 speed transmission, power steering, tandem axle.



2014 CAT CT660 VN:EN074543 Cat CT13 diesel engine, 470hp, 8LL transmission, a/c, wet kit, air ride suspension, 46,000lb rears, 11R24.5 tires, tandem axle, 201,840 miles.



2013 PETERBILT 388 VN:202476 Cummins ISX diesel engine, Eaton Fuller 18 speed transmission, power steering, power windows, power locks, heated mirrors, wet kit, double frame, full lockers, 20,000lb, 20,000lb air lift third axle, 46,000lb rears, 445/65/22.5 front tires, 295/75/22.5 tires, 11R24.5 tires, triaxle, 156,004 miles.



2012 PETERBILT 388 VN:161291 Paccar diesel engine, 485hp, 13 speed transmission, a/c, wet kit, aluminum head rack, air ride suspension, aluminum wheels, 11R24.5 tires, tandem axle.



(11)2013 INTERNATIONAL PROSTAR PLUS MaxxForce 13 diesel engine, power steering, tandem axle.

2009 INTERNATIONAL VN:2HSCUSBR09C128163 Cat C13 diesel engine, Eaton 10 speed transmission, power steering, engine brake, aluminum rims & aluminum tanks, full fenders, power divider lock out, air ride suspension, tandem axle.

2009 INTERNATIONAL VN:2HSCUSBR99C128162 Cat C13 diesel engine, Eaton 10 speed transmission, power steering, engine brake, aluminum rims & aluminum tanks, full fenders, 60in. sleeper, power divider lock out, air ride suspension, tandem axle.

2009 KENWORTH T800 VN:256250 Cat C15 diesel engine, Allison automatic transmission, 2-speed air shift auxiliary transmission, power steering, wet line kit, 4.89 ration, full lockers, 46,000lb rears, air lift third axle, triaxle, 244,098 miles.

5 DUMP TRUCKS



2014 PETERBILT 337 VN:215535 Paccar PX-9 engine, 6 speed transmission, a/c, air brakes, 14ft steel contractors dump body, rear pintle hitch, aluminum wheels, 295/75R22.5 tires, single axle.

2007 PETERBILT 335 VN:N/A Cummins ISP engine, 6 speed transmission, a/c, air brakes, 14ft steel contractors dump body, rear pintle hitch, aluminum wheels, 295/75R22.5 tires, single axle.

2005 STERLING LT9500 VN:N/A Mercedes diesel engine, 8LL transmission, a/c, 18ft steel dump box, 46,000lb rear suspension, full lockers, 4.10 ratio, 425/65R22.5 front tires, 11R22.5 rear, 2-steerable air lift axles, quad axle.



1995 INTERNATIONAL 4700 VN:660974 DT466 engine, 6 speed transmission, air brakes, 4-door cab, steel dump box, roll tarp, rear pintle hitch, 11R22.5 tires, dual wheel single axle.



FORD L9000 VN:A14452 Cummins L10 diesel engine, automatic transmission, steel dump box, rear pintle hitch, Hendrickson suspension, air lift axle, triaxle.

3 TELESCOPIC FORKLIFTS



LIKE NEW DIECI HERCLUES 210.10 SN:PLC2020224 4x4, Perkins pre-emission diesel engine, EROPS, air, 21 ton lift capacity, 16ft. reach height, quick coupler, HD 72in. forks with hydraulic side shift, scale, oxygen & acetylene mounted on rear of machine, 23.5R25 foam filled rubber, 773 hours.



2012 SKYTRAK 10054 SN:45746 4x4, diesel engine, OROPS, 10,000lb lift capacity, 54ft. Reach height, front stabilizers, 14.00-24 rubber.



2011 JLG G9-43A SN:160041441 4x4, Cummins diesel engine, OROPS, 9,000lb lift capacity, 43ft. Reach height, auxiliary hydraulics, 74in. Frame, 380/75x25 foam filled rubber.

6 HYDRAULIC EXCAVATORS



2016 KOMATSU PC360LC-11 SN:A35259 Komatsu diesel engine, Cab, air, heat, am/fm radio, autolube, engine enclosures, pilot control, 1-piece boom, 33.5in. Pads, digging bucket, long undercarriage.



2018 LINKBELT 160X4 SN:HEX1266 diesel engine, Cab, air, 9ft. 8in. Arm, auxiliary hydraulics, 24in. TBG pads, digging bucket, 462 hours. 48M/5000 Powertrain & Hydraulic Warranty till 10-25-21.



2016 LINKBELT 145X3LC SN:LBX145Q6NEHEX1421 diesel engine, Cab, air, reduced tail swing, digging bucket, long undercarriage.



2016 KOBELCO SK85SR SN:5972 diesel engine, Cab, air, heat, front blade, rubber tracks, digging bucket.

2015 KOBELCO SK85SR SN:5808 diesel engine, Cab, air, heat, front blade, rubber tracks, digging bucket.



2015 KOBELCO SK85SR SN:5789 diesel engine, Cab, air, heat, front blade, rubber tracks, digging bucket.

RUBBER TIRED LOADER



2015 JOHN DEERE 544K SN:1DW544KZJFE667975 John Deere diesel engine, EROPS, air, ride control, JRB quick coupler, 3 yard GP bucket, 20.5R25 rubber, 6,500 hours.

RUBBER TRACKED SKID STEERS



2019 BOBCAT T870 Doosan diesel engine, 100hp, EROPS, air, heat, high flow auxiliary hydraulics, mechanical quick coupler, 17.7in. rubber tracks, GP bucket.



KUBOTA SVL75C SN:12059 Kubota diesel engine, Cab, air, 2-speed, auxiliary hydraulics, mechanical quick coupler, rubber tracks, GP bucket.

9 SKID STEERS



(8) 2020 BOBCAT S70 diesel engine, 24hp, EROPS, heat, auxiliary hydraulics, mechanical quick coupler, 36in. GP bucket, 50 hours.

2015 NEW HOLLAND L228 SN:NFM403923 diesel engine, rollcage, auxiliary hydraulics, mechanical quick coupler, GP bucket, 1,579 hours.

26 SKID STEER ATTACHMENTS

- (3) NEW 90IN. BUCKET
- (2) NEW 84IN. FORK EXTENSION
- (2) NEW 3/4 CUBIC YARD CONCRETE PLACEMENT BUCKET
- (17) NEW ATTACH FRAME
- (2) NEW JBX 4000 48IN. FORKS

BOOM LIFTS

GENIE S60 SN:600614031 4x4, Deutz F4L-1011 diesel engine, 60ft. Platform height, straight boom, generator, cold start package, 500lb lift capacity, foam filled rubber. Reconditioned.



GENIE S60 SN:S6006-12837 4x4, Deutz diesel engine, 60ft. Platform height, straight boom, 500lb lift capacity.

WELDER

2016 LINCOLN V275S STICK SN:U1160303665 electric powered, 275AMPS.

6 LIGHT PLANTS

2014 WACKER LTN6L-VS SN:20282566 diesel engine, 4-1,000 watt lightbulbs, 6KW, trailer mounted.

2012 ALLMAND NLPROII SN:3486PRO212 diesel engine, 4-1,000 watt lightbulbs, 6KW, trailer mounted.



2010 ALLMAND NITE LITE PRO SN:0226PRO11 diesel engine, 4-1,000 watt lightbulbs, 6KW, trailer mounted.



2009 ALLMAND NITE LITE PRO SN:1809PRO09 diesel engine, 4-1,000 watt lightbulbs, 6KW, trailer mounted.



2009 ALLMAND NITE LITE PRO SN:1450PRO09 diesel engine, 4-1,000 watt lightbulbs, 6KW, trailer mounted.



ALLMAND NITE LITE PRO SN:3849PRO212 diesel engine, 4-1,000 watt lightbulbs, 6KW, trailer mounted.

JAW CRUSHER



electric powered, feeder/hopper, discharge conveyor, mounted on tandem axle chassis

CRUSHING PLANT ATTACHMENT



ALLIS-CHALMERS 17000MKII GENERATOR SN:17-01237 Allis Chalmers diesel engine, 156kva, 3 phase, mounted in Great Dane 28ft van trailer VN:193102, single axle.

VAN TRUCK



CHEVY C6500 VN:N/A Cat C7 diesel engine, 6 speed transmission, a/c, air brakes, 15ft van body, 11R24.5 tires, single axle.

FLATBED TRUCK



1987 MACK MIDLINER MS200 VN:103544 6cyl diesel engine, 6 speed transmission, flatbed body, stake racks, 3,000lb rear lift gate, 11R22.5 tires, single axle.

CAB & CHASSIS



1987 MACK DM686S VN:14108 Mack diesel engine, 2 stick Mack 10 speed transmission, double frame, camelback suspension, air lift front and rear axles, quad axle.



KENWORTH T800 VN:116634 Cummins ISM engine, 8LL transmission, a/c, Chalmers suspension, 20,000lb front, 46,000lb rears, 295/75R22.5 tires, tandem axle.

SERVICE TRUCK



2015 FORD F550 VN:1FDUF5GY1FEC90121 gas engine, automatic transmission, power steering, service body, dual wheel single axle.



VACUUM TRUCK



2014 WESTERN STAR W4900 VN:N/A Cusco vacuum body, 300 hours, double frame, tri-drive chassis, tri-axle, burnt cab.

ROLLOFF TRUCK

2005 KENWORTH T800 VN:87889 Cummins ISX engine, 450hp, 8LL transmission, a/c, Galbreath U5-EX-194 rolloff body, 60,000lb capacity, Hendrickson suspension, 20,000lb front axle, 46,000lb rear, 425/65R22.5 front tires, 11R24.5 rear, air lift axle, tri-axle.

4 SNOW PLOW TRUCKS



1984 MACK RM6114X VN:1048 4x4, Mack diesel engine, automatic transmission, heat, air brakes, steel dump box, rear spreader, front snow plow, aluminum wheels, 11R24.5 rubber, single axle



STERLING L7500 VN:F74982 Cummins diesel engine, automatic transmission, air brakes, steel dump box, spreader box, front snow plow, single axle.



INTERNATIONAL 4900 VN:478477 DT466 engine, automatic transmission, air brakes, steel dump body, rear spreader, snow blade under truck, front snow plow, single axle.



INTERNATIONAL 2554 VN:571632 International diesel engine, automatic transmission, air brakes, steel dump body, rear spreader, front snow plow, single axle.

3 DETACHABLE GOOSENECK TRAILERS



2016 KALYN SIEBERT KSHRG-3-60T 3 + 3+ 2 VN:008196 60 ton capacity, 26ft deck, 102in wide, front flip ramps, outriggers, pony motor, air ride suspension, scale, air lift axle, triaxle, 3 axle jeep, air ride suspension, scale, hydraulic stinger with gas engine, 2 flip axles with air ride suspension, all axles with aluminum wheels and 275/70R22.5 tires.

2020 LIDDELL C55 VN:564021 55 ton capacity non-ground bearing, 26ft. Well, Apitong deck, polished aluminum wheels, 255/70R22.5 tires, rear strobe light package, air lift third axle, triaxle. FET APPLIES.



TALBERT 35 TON VN:19009 35 ton capacity, hydraulic removal neck, tandem axle.

TANKER TRAILERS

2008 JACK COUNTY MANUFACTURING VN:364251 5000 gallon tank, GPI M3130 transfer pump, spring suspension, polished chrome wheels, 11R24.5 tires, tandem axle.



2008 JACK COUNTY MANUFACTURING VN: 364253 5000 gallon tank, GPI M3130 transfer pump, spring suspension, polished chrome wheels, 11R24.5 tires, tandem axle.

DUMP TRAILER



1990 HILBILT VN:15009 22ft. Steel quarter frame dump body, tandem axle.

TIRES, NEW & USED

- (2) 23 x 8.50-12 NHS TIRES/ MOUNTED
- (2) 25 X 8.50-14 NHS TIRES/ MOUNTED

4 SCRAP RECYCLING EQUIPMENT

- NEW 2 CUBIC YARD SELF DUMPING HOPPER
- (2) NEW 1.75 CUBIC YARD SELF DUMPING HOPPER
- NEW 1.75 YARD HD TRASH HOPPER

10 SNOW EQUIPMENT

- (10) NEW 96IN. SNOW PUSHER

6 PRESSURE WASHERS

- (6) NEW EASY KLEEN MAGNUM GOLD gas engine, 4000PSI, 12Volt, 15hp, Hot Water, totally self contained.

62 NEW SUPPORT EQUIPMENT

- (4) NEW MUSTANG LF88 PLATE COMPACTOR
- (4) NEW MUSTANG MP4800 2IN. SUB PUMP
- (2) NEW MUSTANG CV3500 CONCRETE VIBRATOR
- (2) NEW HUSKIE B65 ELECTRIC DEMO HAMMER
- (2) NEW HUSKIE 11218SDS HAMMER DRILLS
- (8) NEW 3 PC. 14IN. PREMIUM DIAMOND BLADES
- (8) NEW 25FT., 800AMP EXTRA HD BOOSTER CABLE
- (6) NEW 2IN. X 50FT. DISCHARGE WATER HOSE
- (4) NEW AUTO DARKENING WELDING HELMET
- (3) NEW 1/2IN. DRIVE AIR IMPACT WRENCH KIT
- NEW 12V DIESEL FUEL PUMP
- (2) NEW 6PK. 14IN. ABRASIVE BLADES
- NEW GREASE GUN
- NEW (3) WELDING SHIELDS
- (4) NEW 30IN. X 57IN. WELDING TABLE W/SHELF
- (2) NEW 29.5IN. X 90IN. HEAVY DUTY WORK BENCH W/ SHELF
- (2) NEW 1/2 AR500 STEEL COYOTE SHOOTING TARGET
- (2) NEW 3/8IN. AR500 DUELING TREE SHOOTING TARGET
- (4) NEW 3/8IN. AR500 GONG TARGET

7 SUPPORT EQUIPMENT

- NEW GENTRON 7500 WATT GENERATOR
- 2014 WESCO 272660 HYDRAULIC PALLET JACK SN:14/01492
- 2009 BILJAX 0063-0547 DRYWALL HOIST
- HONDA 3500 WATT GENERATOR SN:20012Y300249
- PALLET OF RIVET BUSTERS FOR PARTS
- PALLET OF RIVET BUSTERS
- PALLET OF RIVET BUSTERS
- WATER PUMP ELECTRIC WATER PUMP ELECTRIC



****TIMED AUCTION****

Please feel free to preview any of our Virtual Live or Timed Auction sale sites 5 days before auction day!

SYRACUSE (BRIDGEPORT), NEW YORK

OPENS: SAT., JAN. 16TH AT 8:00 AM - CLOSES: WED., JAN. 20TH AT 12:00 NOON

ADDRESS: 7697 NY-31, Bridgeport, New York 13030. **NOTE:** Timed Auction of New and Late Model Construction and Utility Equipment, Accessories and much more. **SPECIAL NOTE:** When previewing any of our live or timed auctions. Masks required. All people attending must follow CDC guidelines for social distancing and hand-washing. Thank you in advance for adhering to these requirements, we appreciate your cooperation! **SALE SITE PHONE:** (315) 633-2944. **TERMS & CONDITIONS:** "Cash or Company Check" accompanied by current "Bank Letter of Guarantee", made payable to Alex Lyon & Son. Everything Sells "AS IS, "WHERE IS." *The following charges will apply on all purchases:* (1.) For each unit \$35,001.00 and above, a 5.95% administration fee will be assessed when paying with cash or good check. (The standard fee of 8.95% will be assessed when paying with credit card); and (2.) For each unit \$1,001- \$35,000, a 10% administration fee will be assessed when paying with cash or good check, and a 13% fee will be assessed when paying with credit card. (3.) For each unit \$0- \$1,000, a 12.5% administration fee will be assessed when paying with cash or good check, and a 15.5% fee will be assessed when paying with credit card. ****ONLINE BIDDING: An additional fee of 2.5%, cap of \$700 for each piece.****

3 PICKUP LOCATIONS:

7697 Rte 31, Bridgeport, NY 13030
1793 Chestnut Ridge Rd, Chittenango, NY 13037
6381 Thompson Rd, Syracuse, NY 13206

CRAWLER CRANE

MANITOWOC 222 SN:222-022 Cat diesel engine, Cab, 100 ton lift capacity, 80ft. Main boom, 3ft. pads, 40 ton block and ball, certified and inspected by Manitowoc dealer, 5-new compartment doors, complete service of all functions of oil and hydraulics.

TRUCK CRANE

P & H 790TC SN:35501 Cummins upper/ lower diesel engine, Cab, 90 ton lift capacity, 180ft. Main boom, 60ft. JIB, bumper counterweight, crane smart wireless LMI system, ground control option, annual inspection 6/8/2020

ROUGH TERRAIN CRANES

GROVE RT740B SN:75359 4x4, Cummins 6BTA5.9 diesel engine, 177hp, Cab, electronic display of boom angle & length, rated load radius & boom tip height, 35-110ft. 4-section full power telescopic boom, Grove H0-30D-16 main hoist w/ 500ft. of cable, electric hoist drum rotation indicator & cable follower, scalloped outriggers with inverted jacks, 23.5R25 Michelin XRA tubeless tires.



GROVE GB100A

6 CRANE ACCESSORIES

1 TON JIB CRANE



DFA-110 4-PERSON MAN BASKET 1,000lb capacity



(4) 4FT. X 15FT. STEEL CRANE MAT

OVERHEAD CRANES

1/2 TON CRANE



1/2 TON CRANE 30ft. Span.

6 HYDRAULIC EXCAVATORS

2013 CAT 314ELCR SN:DKD00200 Cat diesel engine, Cab, air, heat, auxiliary hydraulics, reduced tail swing, digging bucket, long undercarriage



LYON



2012 KOBELCO SK235SR SN:YU0603226 diesel engine, Cab, reduced tail swing, digging bucket

(2) 2015 BOBCAT E26 diesel engine, Cab, front blade, rubber tracks, digging bucket.

KOMATSU PC88 Komatsu diesel engine, Cab, front blade, digging bucket.

NEW 2020 RIMA COBRA CX-007 diesel engine, OROPS, auxiliary hydraulics, 5ft. Digging depth, rubber tracks, 12in. Tooth bucket.

3 RUBBER TIRED LOADERS

CAT 908H Cat diesel engine, EROPS, GP bucket.

KUBOTA R530 Kubota diesel engine, EROPS, GP bucket.



JOHN DEERE 544E SN:DW544ED533737 John Deere diesel engine, EROPS, 3rd valve hydraulics, 4-in-1 GP bucket, 17.5R25 rubber.

ASPHALT PAVER

BARBER GREENE BG220 John Deere diesel engine, 108hp, hydrostatic drive, differential lock, 12V system, 8'-6ft. Diesel fired screed, rear mounted extensions, 130 cu/ft hopper, 2,150 hours.

ASPHALT ROLLER



2014 VOLVO DD110B SN:V085018 diesel engine, OROPS, 66in. Smooth drum, double drum, vibratory drum, drum drive, front & rear spray bars.

VIBRATORY ROLLER



UNUSED HAMM H111 Deutz TCD3.6L4 diesel engine, EROPS, air, heat, 84in. Smooth drum, vibratory drum, drum drive, water system, 381 hours.

RUBBER TRACKED SKID STEERS



2014 CAT 279D SN:GTL00702 Cat diesel engine, EROPS, auxiliary hydraulics, mechanical quick coupler, rubber tracks, GP bucket.

BOBCAT T190 diesel engine, EROPS, air, heat, auxiliary hydraulics, mechanical quick coupler, rubber tracks, 72in. GP bucket, 1,580 hours. Has engine issues.

22 SKID STEER ATTACHMENTS

NEW GREATBEAR 86IN. HYDRAULIC SNOW PLOW

(2) NEW GREATBEAR 72IN. HYDRAULIC ROCK BUCKET

NEW GREATBEAR 72IN. HYDRAULIC VIBRATORY ROLLER

NEW GREATBEAR ROTARY CULTIVATOR

NEW GREATBEAR 78IN. FORK GRAPPLE

(2) NEW (2) FORK EXTENSION

NEW ATTACH FRAME

NEW BACKHOE ATTACHMENT W/ 12IN. TOOTH BUCKET

NEW FORKLIFT MAST 4,000lb capacity, 15ft. Reach height.

NEW HAY BALE

NEW 8FT. TELESCOPING LIFT BOOM 2,000lb capacity.

NEW 1.5 YARD TRASH HOPPER

NEW 60IN. PALLET FORKS 4,000lb capacity.

NEW 1/2 YARD CONCRETE BUCKET

(4) NEW 48IN. FORK SET 4,000lb capacity.

(2) NEW 48IN. RIPPER

TELESCOPIC FORKLIFT



JLG G12-55 4x4, diesel engine, EROPS, 12,000lb lift capacity, 55ft. Reach height, front stabilizers.

12 FORKLIFTS



2014 HYSTER S050FT LP engine, OROPS, 5,000lb lift capacity, 189in. 3-stage mast, 38.5in. Carriage.



2010 HYSTER E050XN SN:A268N03608H electric powered, OROPS, 5,000lb lift capacity, 3-stage mast, sideshift, 38.5in. Carriage, 42in. Forks, charger.



HYSTER S50XL LP engine, OROPS, 5,000lb lift capacity, 3-stage mast.

HYSTER S50XM LP engine, OROPS, 5,000lb lift capacity, 16ft. Reach height, sideshift, 42in. Forks, pneumatic tires.



2011 HYSTER electric powered, OROPS, 3-stage mast, sideshift, load back rest, charger.

2010 HYSTER J040XNT electric powered, OROPS, 4,000lb lift capacity, 175in. Reach height, 38.5in. Carriage, 42in. Forks, charger.



HYSTER J040XNT VN:H160N03361Z electric powered, OROPS, 4,000lb lift capacity, 175in. Reach height, 38.5in. Carriage, 42in. Forks, charger.



2014 YALE GLC050 SN:B910V02226M LP engine, OROPS, 5,000lb lift capacity, 194in. 3-stage mast, 38.5in. Carriage, 42in. Forks, cushion tires.



2014 YALE GLP030VXNURE08 LP engine, OROPS, 3,000lb lift capacity, 3-stage mast, sidishift.



2012 TRUK ALONG electric powered, OROPS, charger.



DREXEL electric powered, OROPS, charger.
CAT GP20K LP engine, OROPS, 4,000lb lift capacity, 3-stage mast, sidishift, pneumatic tires. Does Not Run.

6 FORKLIFT ATTACHMENTS



RAYMOND RAPID SWEEPER
6FT. FORKS 6 ton capacity.



6FT. FORKS 5 ton capacity.



(3) 4FT. FORKS

5 BOOM LIFTS

SKYJACK SJ61T diesel engine, 60ft. Platform height, straight boom, 500lb lift capacity.
SKYJACK SJ45 4x4, diesel engine, 45ft. Platform height, straight boom, 500lb lift capacity.
(2) SKYJACK SJ40 4x4, diesel engine, 40ft. Platform height, straight boom, 500lb lift capacity
GROVE A45J SN:46368 4x4, diesel engine, 45ft. Platform height, articulating boom, JIB, 500lb lift capacity.

26 SCISSOR LIFTS

(3) SKYJACK SJ7127 electric powered, 27ft. Platform height, slide out deck, 500lb lift capacity.
(3) SKYJACK SJ114632 electric powered, 32ft. Platform height, slide out deck, 500lb lift capacity.
SKYJACK SJ4632 electric powered, 32ft. Platform height, slide out deck, 500lb lift capacity, 297 hours.

SKYJACK SJ4626 electric powered, 26ft. Platform height, slide out deck, 500lb lift capacity, 390 hours.
SKYJACK SJ3226 electric powered, 26ft. Platform height, slide out deck, 500lb lift capacity, 266 hours.
SKYJACK SJ3219 electric powered, 19ft. Platform height, slide out deck, 500lb lift capacity, 430 hours.
SKYJACK SJ3219 electric powered, 19ft. Platform height, slide out deck, 500lb lift capacity, 347 hours.



SKYJACK 3219 SN:225102 electric powered, 19ft. Platform height, slide out deck, 500lb lift capacity
(3) GENIE GS3226 electric powered, 26ft. Platform height, slide out deck, 500lb lift capacity.
(10) HYBRID 1430 electric powered, 14ft. Platform height, slide out deck, 500lb lift capacity.
MEC 1632 electric powered, 16ft. Platform height, slide out deck, 500lb lift capacity, 376 hours.

6 TRACTOR ATTACHMENTS



(6) NEW ROAD GEAR TRACTOR STORAGE/ TOOL BOX

3 CONCRETE EQUIPMENT

(3) WHITEMAN RIDE ON POWER TROWEL gas engine.

ICE CREAM TRUCK

2005 KENWORTH T300 VN:104109 Cat C7 diesel engine, Eaton 6 speed transmission, power steering, Carrier Reefer unit, 14ft. Ice cream body, dual wheel single axle. Does not Run. (Motor is Dragging).

COLD PLATE MILK TRUCK



2005 KENWORTH T300 VN:104112 Cat C7 diesel engine, Eaton 6 speed transmission, power steering, cold plate body, dual wheel single axle. Does not Run. (No Compression in Motor).

3 REEFER TRUCKS



2005 KENWORTH T300 VN:104119 Cat diesel engine, 6 speed transmission, power steering, Carrier reefer unit, 11R22.5 tires, dual wheel single axle. Runs.



2008 KENWORTH T300 VN:232992 Cummins PX8 diesel engine, Eaton 6 speed transmission, power steering, reefer body, dual wheel single axle. Does not Run. (Missing Fuel tank, Motor is all there).



2008 KENWORTH T300 VN:232989 Cummins PX8 diesel engine, Eaton 6 speed transmission, power steering, reefer body, dual wheel single axle. Does not Run. (Missing Fuel tank, Missing Door, Motor is all there).

7 TRUCK TRACTORS



2013 CAT CT660 VN:J416683 Cat C15 diesel engine, 475hp, Eaton Fuller 18 speed transmission, power steering, 2 line wet system, Road Gear aluminum headache rack, air slide 5th wheel, 12,000lb fronts, 46,000lb rears, air ride suspension, 11R24.5 tires, PA wheels, tandem axle, 121,764 miles.

2013 VOLVO VNL64 VN:139701 Volvo D13 diesel engine, 455hp, Volvo I-shift transmission, power steering, tandem axle. Does Not Run. (Parts).



2013 VOLVO VN:567882 Volvo D13 diesel engine, 12 speed automatic transmission, power steering, sleeper, tandem axle.

2008 VOLVO VNL42 VN:265974 Volvo D13 diesel engine, 375hp, Volvo I-shift transmission, power steering, dual wheel single axle. Does not run. (Parts in Cab).

2012 INTERNATIONAL 8600 VN:626719 Cummins diesel engine, power steering, dual wheel single axle.

PETERBILT 379 Cummins diesel engine(Parts), 8 speed transmission, power steering, wet lines, 63in. Sleeper, short hood, tandem axle.

PETERBILT 379 Cummins ISX400 STX diesel engine, 8 speed transmission, power steering, wet lines, 63in. Sleeper, short hood, tandem axle.

PICKUP TRUCK

2003 FORD F350 VN:A33065 7.3 diesel engine, automatic transmission, power steering, utility body. Runs.

5 REFRIGERATED TRAILERS

2007 KIDRON VN:1054239 28ft. X 102in. Body, Thermo King reefer, rollup rear door, air ride suspension, single axle.

2005 GREAT DANE VN:708667 48ft. Reefer body, tandem axle.

2005 GREAT DANE VN:708665 48ft. Reefer body, tandem axle.

2001 WABASH VN:754449 48ft. Reefer body, Carrier unit, tandem axle.

1996 UTILITY VN:949318 48ft. Reefer body, Carrier unit, tandem axle.

TANKER TRAILER

1992 WALKER MILK VN029940 5,000 gallon capacity, 11R22.5 tires, tandem axle.

FLATBED BODY



UTILITY BODY



2014 STEEL TRUCK BODY W/ LADDER RACK

KNUCKLE BOOM



NATIONAL 24FT. HIGH, 10 TON

MULTI-USE CONTAINER



NEW 40FT. HIGH CUBE CONTAINER Details: Four Side Open Door, one end door, lock box, side forklift pockets.

8 STORAGE BUILDINGS

NEW GOLDEN MOUNT 30FT. X 65FT. X 15FT. Snow Rating Test Report;SGS fabric Certificate, Dome roof frame , snow rating:180kg.

(2) NEW GOLDEN MOUNT 40FT. X 40FT. Snow Rating Test Report;SGS fabric Certificate, PE fabric galvanized tube, UV-resistance & fire- retardant.

(2) NEW GOLDEN MOUNT 40FT. X 20FT. Snow Rating Test Report;SGS fabric Certificate, PE fabric galvanized tube, UV-resistance & fire- retardant.

(2) NEW GOLDEN MOUNT 20FT. X 30FT. X 12FT. Snow Rating Test Report;SGS fabric Certificate, Peak roof frame, snow rating:200kg.

NEW GOLDEN MOUNT 20FT. X 20FT. Snow Rating Test Report;SGS fabric Certificate, PE fabric galvanized tube, UV-resistance & fire- retardant.

2 PORTABLE BATHROOM STATIONS

NEW BASTONE 110V PORTABLE TOILETS W/ SHOWER





NEW BASTONE 110V PORTABLE TOILET W/ DOUBLE STALL

4 SCRAP RECYCLING EQUIPMENT

- (4) NEW GREATBEAR 1 YARD SELF DUMPING HOPPER

SNOW EQUIPMENT

- (2) NEW 8FT. SNOW PUSHER

3 FUEL TANKS



- (3) FUEL TANKS

4 BULK TANKS



- (4) 275 GALLON STORAGE TOTE W/ CRATE

TIRES AND TRACKS

NEW STEEL TRACKS FOR OVER 12 X 16.5 TIRES

9 STEEL BEAMS



- (9) 52FT. X 12IN. X 6IN

16 PALLETS OF STONES



- (15) NEW PALLET OF STONES
PALLET OF STONES

12 PRESSURE WASHERS

- (4) NEW EASY KLEEN MAGNUM GOLD gas engine, 4000PSI, 12Volt, 15hp, Hot Water, totally self contained.



- (4) NEW LIFAN LFQ3370 RECOIL 3300PSI 7hp Recoil start EPA gas engine, 25ft. PVC high pressure hose, 16in. Gun and lance w/ adjustable spray wand, hose hanger & wand brackets for EZ storage.



- (4) NEW LIFAN LF2865 2800PSI Lifan 196cc gas engine, 6.5hp, 2.5 GPM, 25ft. PVC high pressure hose, 16in. Gun & lance w/ adjustable spray wand, hose hanger & wand brackets for EZ storage.

96 NEW SUPPORT EQUIPMENT

- (4) NEW SIMPSON POWERSHOT 3600 WATT GENERATOR gas engine, 3600 watts, 3.4 gallon capacity, wheel kit.
(4) NEW CAMPBELL HAUSFELD 8 GALLON, 120V, 60HZ AIR COMPRESSOR with 5pc tools.



- (4) NEW STANLEY ST2WP-LT 2IN. TRASH PUMP Lifan gas engine, 7hp, removable T-bar connection, front pump cover for easy clean out.
(2) NEW MUSTANG LF88 PLATE COMPACTOR
(4) NEW MUSTANG MP4800 2IN. SUB PUMP

- (2) NEW MUSTANG CV3500 CONCRETE VIBRATOR
NEW HUSKIE B65 ELECTRIC DEMO HAMMER
(2) NEW HUSKIE 11218SDS HAMMER DRILLS
(8) NEW 3 PC. 14IN. PREMIUM DIAMOND BLADES
(8) NEW 25FT., 800AMP EXTRA HD BOOSTER CABLE



- (2) NEW 12V DIESEL FUEL PUMP

- (4) NEW 2IN. X 50FT. DISCHARGE WATER HOSE
(2) NEW AUTO DARKENING WELDING HELMET
(2) NEW 1/2IN. DRIVE AIR IMPACT WRENCH KIT
NEW (2) WELDING SHIELDS
(4) NEW LITHONIA LIGHTING EMERGENCY LIGHTING WAREHOUSE
(4) NEW CASE OF 4IN. SWIVEL CASTER WHEELS, 12-PER CASE
(6) NEW GREATBEAR 20FT. BI-PARTING WROUGHT IRON GATE With artwork "Deer" in the Middle of Gate Frame.

NEW GREATBEAR 20FT. BI-PARTING WROUGHT IRON GATE With artwork "Deer" in the Middle of Gate Frame.

(5) NEW GREATBEAR 14FT. BI-PARTING WROUGHT IRON GATE With artwork "Deer" in the Middle of Gate Frame.

(2) NEW STEELMAN 10FT. WORKBENCH W/ 15-DRAWERS & 2 CABINETS

(2) NEW STEELMAN 7FT. WORKBENCH W/ 20-DRAWERS

(2) NEW STEELMAN 7FT. WORKBENCH W/ 10-DRAWERS & 2 CABINETS

NEW GREATBEAR QTY OF 22PC 2T-5T WEBBING SLING

(2) NEW 5/16" 7FT. G80 DOUBLE LEGS LIFTING CHAIN SLINGS

NEW GREATBEAR ELECTRIC WINCH.

NEW GREATBEAR (5) 5400LBS RATCHET BINDER &

(10) 20FT. 5/16" CHAIN

NEW GREATBEAR (5) 9200LBS RATCHET BINDER &

(10) 20FT. 3/8" CHAIN

(3) NEW SAFETY HARNESS

(6) NEW TYVEK HOUSE WRAP, 48IN. X 100 YARDS

(3) NEW 25FT. CONVEYOR SET, 16IN. WIDE X 8FT. LONG

(2) NEW PALLET OF NEW WAREHOUSE LIGHTS

82 SUPPORT EQUIPMENT

(2) JOBOX 3FT. X 6FT. X 8FT. ROLLING STEEL TOOL CABINET, LOCKABLE W/ SHELVES

(2) BANDING CART W/ TOOLS

(5) (2) KIDDE FIRE EXTINGUISHERS

(2) EMERGENCY EYE WASH STATION

(4) PALLET OF STEEL SHELVING, 18IN. X 36IN. X 7FT. TALL W/ CLIPS

(2) BREAK ROOM FOLDING TABLE & (4) CHAIRS

(2) SET OF BREAK ROOM LOCKERS

(2) 2-DOOR SHOP CABINET 6FT. TALL W/ SHELVES

(4) 1.5 YARD SELF DUMPING HOPPER

(2) PALLET OF BLUE STONE
 (2) 3 YARD DUMPSTER ON WHEELS
 (3) (2) LP TANKS
 (2) 4-DRAWER FILE CABINET
 (2) 4FT. X 4FT. JUST RITE SPILL CONTAINMENT PALLET
 (8) 32FT. HEAVY DUTY PALLET RACK
 (2) PALLET JACK 5,000lb capacity, 48in. Forks.
 PALLET JACK 4,000lb lift capacity, 48in. Forks, batteries & built in charger.
 RYOBI 10IN. TABLE SAW BENCH MOUNT
 CRAFTSMAN 10 GALLON SHOP VAC
 CRAFTSMAN 20 GALLON SHOP VAC
 TENNANT WALK BEHIND FLOOR SCRUBBER 10 gallon capacity.
 (2) LOADING DOCK WEATHER SURROUND & BUMPER SET
 40 GALLON INDUSTRIAL PARTS WASHER bench mounted, 500lb capacity.
 (2) NESTA-FLEX ROLLING FLEXIBLE CONVEYOR 24IN. X 25FT. LONG
 (4) 10FT. TALL, 32FT. RUN HEAVY DUTY PALLET RACK
 (2) 36 VOLT INDUSTRIAL BATTERY CHARGER
 7FT. X 8FT. HYDRAULIC LOADING DOCK LEVELER 15,000lb capacity.



(2) DECORATIVE GATE (2 sections 10' wide 7' tall each).



(2) COMMERCIAL BIKE RACK



(2) COMMERCIAL FENCE 9'6" wide, 8' Tall (each piece).



METAL RACK ON WHEELS



METAL CABINET, FLAMMABLE MATERIALS
 HEAVY DUTY LOADING DOCK, 33FT. X 8FT. 6IN. WIDE
 3IN. TSURUMI PUMP Honda gas engine.
 2010 CEP 6506GU POWER CENTER SN:8689



(4) CONTAINMENT CONTAINER/ SPILL KIT



EVAPCO ATC-170E INDUSTRIAL EVAPORATIVE CONDENSER



(14) CONCRETE BARRIER POLE



SAFETY RAILS-PROTECTION FOR GAS METER OR SIMILAR



ALUMINUM PICNIC TABLE



(2) METAL SHOP STAIRS

28TH ANNUAL FLORIDA AUCTION

THE GREATEST SALE OF THE YEAR! • 9 DAYS OF SELLING!!

*Construction Equipment, Aerials, Forklifts, Cranes, Dump Trucks,
Truck Tractors, Trailers, Support & Attachments*

SATURDAY, JANUARY 30TH – SUNDAY, FEBRUARY 7TH @ 9:00 AM

KISSIMMEE, FLORIDA (Winter Garden)

**ONSITE
AUCTION**



ADDRESS: 12601 Avalon Road,
Winter Garden Florida 34787

**ONSITE
AUCTION**



JACK'S NOTE: 28 Glorious Years
Conducting This High Quality Sale.

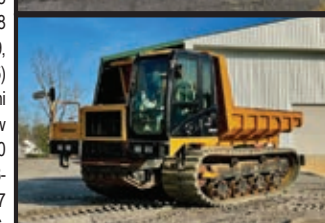
THE 28TH ANNUAL 9-DAY FLORIDA AUCTION: Where the Best Equipment is the Norm, not the Exception. The Greatest Auction On Planet Earth. Primarily selling 2015-2020 Construction, Cat, Komatsu, JD, Case, LinkBelt, Volvo, Atlas Copco, Aerial Equipment, Trucks and Trailers.



**SPECIAL TIMED EVENT FEBRUARY 3: 2015
BOMBARDIER LEARJET 70:** All potential buyers can inspect the airplane by appointment. Please contact Scott Moyer (315-439-7740). Plane will be hangaring in Kissimmee, Florida. Please visit www.lyonauction.com for more details.



HIGHLIGHTS INCLUDE: **TRENCHER:** Trenchor T1060, **SOIL COMPACTOR:** 2017 Cat 815K, **8 ARTICULATED HAUL TRUCKS:** (2)2018 Cat 745C, 2015-2014 Volvo A30G, (2)2014 Volvo A30F, 2019-2016 Volvo A25G, **4 LONG REACH EXCAVATORS:** 2017-2016 Cat 326FL(60'), 2018 Linkbelt 250X4, 2018 Linkbelt 210X4(50'), **139 HYDRAULIC EXCAVATORS:** Cat 375L, 2019 Cat 352FVG, Cat 350LC, 2015-2014 Cat 349FL, 2012 Cat 349EL, (2)2020 Cat 336, 2017-2016 Cat 336FL, (3)2014 Cat 336EL, 2020 Cat 335FLCR, 2020-(2)2016 Cat 330F, 2016 Cat 326FL, (2)2020-2019-2017-2016 Cat 325FLCR, 2016 Cat 325, Cat 325B, (10)2020-2019 Cat 320, 2020 Cat 320NXT, (5)2018 Cat 320FL, (3)2020 Cat 315FLCR, 2020-(2)2018-(4)2017 Cat 313FL, (2)New Cat 313, 2019-(2)2018-(2)2017-2016 Cat 313FLGC, 2015-(2)2014 Cat 312EL, (2)Cat 312E, Cat 312, (3)2018-(2)2017-(2)2016-2015 Cat 308E2CR, (2)Cat 308C, 2015 Cat 305.3ECR, Cat 235C, 2018 Volvo EC480EL, 2018 Volvo ECR355EL, 2017 Volvo EC350EL, (2)2019 Volvo EC300EL, 2018 Volvo EC250EL, 2018 Volvo ECR235EL, 2018 Volvo EC220EL, 2011 Kobelco SK350LC-9, (2)Komatsu PC360LC-10, Komatsu PC300LC, 2018 Komatsu PC228USLC-11, (5) Komatsu PC138US-10, Hitachi ZX470LC, 2014 Hitachi ZX225USLC-5, 2019 Hitachi ZX210LC-6, 2015 Case CX470, 2018 Case CX245DSR, 2020 Case CX90D, (2)New Doosan DX225LC, Unused Doosan DX140LCR-5, 2020 Doosan DX65R-3, (4)2020 Doosan DX62R-3, JD 350GLC, JD 135CRTS, (3)2019-(2)2018 Linkbelt 201X4, (2)2018-2017 Sany SY135C, 2020-(3)2018-2017 Bobcat E85, Unused Takeuchi TB2150R, 2017 Takeuchi TB260, Takeuchi TB016, Takeuchi TB014, Takeuchi TB007, (3)2019 NH E37C, 2017-2014 Kubota KX080-4, (2)2017 Yanmar V1080, **2 MATERIAL HANDLERS:** 2009 Fuchs MHL350D, 2008 Fuchs MHL320D, **11 MOTOR GRADERS:** 2010 Cat 16M, 2016 Cat 160M, 2018 Cat 140KVHP, 2013-(2)2011 Cat 140M2, 2015 Cat 12M3, 2012 Cat 12M2, 2015 Komatsu GD655-5, (2)2009 Volvo G930, **MOTOR SCRAPER:** Cat 621E, **3 PULL PANS:** (3)Pull Pans, **59 RUBBER TIRED LOADERS:** Cat 988F, Demo Cat 980M, 2013 Cat 980K, Cat 980G, 2017 Cat 972M, Cat 972G, Demo Cat 966M, Cat 966G-2, (2)New & 2018 Cat 962M, (2)New-2017-(2)2016 Cat 950M, 2012 Cat 950K, 2018 Cat 950GC, Cat 950F, Cat 950E, Cat 950K, (2)2018-(3)2017-(4)2016-2015 Cat 938M, Cat 938G, (3)Cat 936F,



CONTINUED ON NEXT PAGE

CONTINUED FROM PREVIOUS PAGE


America's Auction Company. Big enough for the industry leaders, yet personal enough for America's farmer.

Cat 930, Cat 920, 2018-(2)2016 Cat 926M, Cat 926E, 2020 Cat 910M, Demo Cat 908M, Cat IT18, (2)Unused Liebherr L506C, Komatsu WA500, Komatsu WA420-3, 2007 Doosan Mega 250V, JD 724J, 2019 JD 544L, Volvo L120E, 2018 Volvo L110H, 2013 Volvo L110G, 2014 Volvo L90G, Volvo L90E, 2019 Volvo L70H, IR WL350, **41 CRAWLER TRACTORS:** (2)Cat D10R, Unused-(3)2018 Cat D8T, 2020 Cat D7E, 2019 Cat D6TLGP, 2014 Cat D6TLGP, 2015-2014 Cat D6K2LGP, (2)2015 D6KLG, (3)2018 Cat D6NLP, 2018 Cat D6N, (3)2016 Cat D6NLP(ripper), 2008 Cat D6NLP(winch), (2)2017-(2)2016-(2)2015-(2)2014-2013 Cat D5K2LGP, (2)Cat D5KLG, Cat D4KLG, 2018 Cat D3K2XL, 2019 JD 650KXLT, 2018 JD 550KLG, (3)2019 JD 450KLT, Case 450C, **14 CRAWLER DUMPS:** (2)2018 Terramac RT6, 2016 Terramac RT14, 2016-(2)2015 Morooka MST2200VD, (2) Morooka MST1500VD, (6)2014 Morooka MST4000VD, **2 CRAWLER CRANES:** Lima 50-ton, P&H 35-ton, **TRUCK CRANE:** Grove TM-875, **PILE DRIVER:** Fundex F12, **15 TRACTOR LOADER BACKHOES:** 2018 Terex TLB840R(4x4), Cat 450E(4x4), Cat 426, 2013 Cat 420F, Cat 420D, Cat 416F, (7)2013 JD 310K, 2013 Case 580N, 2009 Case 580SM, **SLIP PAVER:** Gomaco GT3600, **3 ASPHALT PAVERS:** Leeboy 8500, Leeboy 1000, Leeboy 100, **SOIL STABILIZER:** Bomag MPH454R, **33 VIBRATORY ROLLERS:** (2)2017 Cat CS74B, (8)2011 Cat CS74, 2014 Cat CS56B, Cat CS563E, 2015-(2)2013 Cat CS44, 2017-2014 Volvo SD115B, (2)Unused Bomag BW213DH-5, 2014 Bomag BW211D-50, (2)Unused Bomag BW177D-5, 2016 Bomag BW145D-5, 2013-(3)2012 Hamm 3410, 2014-2011 Hamm 3307, Demo Hamm H11i, (3)2017 Dynapac CA2500D, **11 ASPHALT ROLLERS:** (7)Unused Bomag BW120A11-5, Sakai SW850, Hypac 340C, Dynapac CC142, Ingram, **3 TRENCH ROLLERS:** 2009 Multiquip P33HHMR, Wacker RT820, Benford BTR851, **10 RUBBER TRACKED SKID STEERS:** 2015 Takeuchi TL8, Cat 299D, 2016 Cat 289D, Cat 289C2, 2019 Cat 259D3, (3)2019 Cat 259D, Cat 259B3, 2014 Cat 257B, **5 SKID STEERS:** Unused JD 318D, (3)Cat 262B Mustang, **18 TELESCOPIC FORKLIFTS:** (2)2016 Cat TL1255D, 2016 Cat 1055D, (2)Cat TL1055, Cat TL943, (4)Unused Skytrak 10054, Unused Skytrak 8042, (2)2013 Skytrak 8042, 2016 Skytrak 6036, 2013-2012 Genie GTH-1056, Genie GTH-5519, IR VR-90B, **ROUGH TERRAIN FORKLIFT:** JCB 930, **4 FORKLIFTS:** Taylor TE1805, 2012 Hyster S155FT, Hyster S120FT, Yale GDP050, **33 BOOM LIFTS:** (2)Genie S-125, (2)Genie S-85(Recond.), Genie Z80/60(Recond.), Genie S-80, Genie Z60/34(Recond.), Genie Z60/34RT, (4)Genie S-60, Genie Z45, 2012 Genie Z40/23N, 2012 Genie Z30/20, (3)JLG 1250AJ, JLG 800S, JLG 600AJN, (2)Unused JLG 460SJ, (3)Unused JLG 450AJ, Unused JLG E450AJ, JLG 450AJ, 2012 JLG E400A, 2009 JLG E400AJPN, (3)Unused JLG 340AJ, Unused JLG E300AJ, **16 SCISSOR LIFTS:** Genie GS-5390, Genie GS-4390, 2009 Genie AWP-40S, 2012 Genie GR-15, Genie GS-3232, Skyjack SJ7135RT, 2014 Skyjack SJIII4632, 2014 Skyjack SJIII4626, (2)2013 Skyjack SJ3226, 2012 Skyjack SJIII3219, Skyjack SJ3219, (4)Unused JLG 19R, **3 AIR COMPRESSORS:** (2)Atlas Copco XAS1600, 2017 Atlas Copco XAS110, **10 GENERATORS:** Cat XQ200, (5)Cat XQ100, (3) Cat XQ60, Himonisa 135Kw, **8 WELDERS:** 2014 Lincoln Vantage 500, Lincoln 300, Lincoln 250, (3)Miller 300, (2)Miller 250, **3 LIGHT PLANTS:** 2018 Magnum Pro MLT6SM, 2011 Allmand Nite Lite Pro, 2012 Terex AL4000, **4 CONVEYORS & STACKERS:** Rock Screener Conveyor, Soil Pulverizer w/Conveyor, 45ft. Conveyor w/Hopper, 40ft. Conveyor w/Hopper, **18 AGRICULTURAL TRACTORS:** JD 6115D, Unused JD 5075E, (2)Unused JD 5065E, (3)New NH TS6.120, (10)New NH TS6.110, Kubota M9960D, **UTILITY TRACTOR:** 2018 JD 4044R, **TRACTOR LOADER:** Unused JD 5045E, **2 TRENCHING DRILLS:** Ditch Witch JT2720, Ditch Witch JT4020, **VACUUM UNIT:** Ditch Witch FX30, **2 MIXING UNITS:** (2) Ditch Witch FM13, **8 COMMERCIAL MOWERS:** (2)New Bad Boy Outlaw Rebel, (2)New Bad Boy Maverick, New Bad Boy Avenger ZT Elite, New Bad Boy Magnum, (2)New Bad Boy MZ Series, **12 SWEEPERS:** (3)2017 Broce CRT350, (2)2017 Superior SM80K, 2013 Superior 80CT, (4)2016 Terramite Commander, 2009 Laymor 8C, Laymor SM300, **3 WATER TANKERS:** Cat 769C, Cat 613C, Volvo A30X, **DISTRIBUTOR TRUCK:** IH S1900, **FLATBED TRUCK:** 2005 Ford F350XL, **4 SERVICE TRUCKS:** 2016 Ford F450, 2007 Ford F350, 2008 IH 7300SFA, IH 4800, **BOOM & SERVICE TRUCK:** 1986 Western Star(t/a), **BUCKET TRUCK:** 2010 Freightliner M2(t/a), **VACUUM TRUCK:** 2010 IH 7500, **2 CONCRETE MIXER TRUCKS:** (2)2006 Terex Advance(t/a), **3 DUMP TRUCKS:** Unused Peterbilt 567(tri), 1999 Mack RD688S, 2009 Ford F550, **2 TRUCK TRACTORS:** 2015 Mack CXU613(t/a), Mack RW753, 2012 IH 8600(t/a), **SPORT UTILITY VEHICLE:** 2013 Ford Escape, 2003 Ford Expedition, **3 PICKUP TRUCKS:** 2008-2005 Ford F350, Ford F250, **10 DETACHABLE GOOSENECK TRAILERS:** 2020 Liddell C55, (9)2021 Witzco RG52, **FUEL & LUBE TRUCK:** 2005 Mack CV713, **UTILITY VEHICLE:** 2012 Kawasaki 4010T, **1084 NEW SUPPORT EQUIPMENT.**



For BID ONLINE
technical assistance call
Proxibid: (855) 636-6461
Nextlot: (919) 361-1111

SALE SITE PHONE: (407) 239-2700

FL LICENSE: AB-1091 • FL AUCTIONEER: AU-1548 Jack Lyon

ALEX LYON & SON

SALES MANAGERS & AUCTIONEERS, INC., BRIDGEPORT, NY 13030

Phone: (315) 633-2944 • Fax: (315) 633-5635



Go to WWW.LYONAUCTION.COM for a Complete List, Descriptions, and Pictures

TIMED AUCTION

JANUARY 27TH 8AM - FEBRUARY 3RD 5PM

HIGHLY MOTIVATED SELLER! • SELLS TO OWNERS CONFIRMATION.

LEAR JET 70



2015 BOMBARDIER LEARJET 70
1,990 Hours, 1,681 Cycles

EXTERIOR
Height: 14ft., Wing Span: 50ft. 11in., Length: 56ft.



AVIONICS
Garmin G5000
w/high resolution displays

INTERIOR
Height: 4ft. 11in., Width: 5ft. 1in., Length: 17ft. 8in.
Volume: 363 cu. ft., Internal Baggage: 65 cu. ft.



POWER PLANT
Engines: 2
Engine Mfg.: Honeywell
Engine Model: TFE731-40BR

DISTANCES
Takeoff: 4,440 ft.
Balanced Field Length: 4,230 ft.
Landing: 2,660 ft.

OPERATING WEIGHTS

Max T/O: 21,500 lb.
Max Landing: 19,200 lb.
Operating: 13,715 lb.
Fuel Capacity: 6,062 lb.
Payload W/Full Fuel: 1,973 lb.
Max Payload: 2,285 lb.



ADDITIONAL SPECS

Total Capacity: 9, 2-Crew, 6-Passenger
Lavatory (Acts as additional seat)
Distance: 2,370 Nautical Miles, **Top Speed:** 514mph

Special Note: All potential buyers can inspect the airplane by appointment.
Please contact: Scott Moyer (315-439-7740).
Plane will be hanging in Kissimmee, Florida.

Terms: 5.95% administration fee will be assessed when paying with cash or good check.
A refundable \$25,000 wire transfer must be sent to Alex Lyon & Son Auctioneers to be approved to bid.



AUCTION CALENDAR

Go to **WWW.LYONAUCTION.COM** for **START-STOP** times on **TIMED / VIRTUAL AUCTIONS**

1. **LIVE:** Friday, January 15: **RACINE, WISCONSIN:** (75) Truck Tractors Plus a Complete Estate of Late Model Construction Equipment, Equipment Trailers, Truck Tractors, 2016- (2) 2015 Kobelco SK85C.

2. **TIMED:** Saturday, January 16 through Wednesday, January 20: **SYRACUSE (BRIDGEPORT), NEW YORK:** Very Large Construction Equipment Auction. Cranes, Boom Lifts, Scissor Lifts, (20+) Forklifts, Skid Steers, Air Compressors, Light Plants, Generators, Very Large Quantity Support, Attachments, Tagalongs, Pickups and Services Trucks.

3. **LIVE:** Tuesday, January 19: **AMARILLO, TEXAS:** Major Job Completion Auction. Construction & Earthmoving Equipment, Various Types of Trucks, Trailers Attachments and Support Equipment.

4. **LIVE:** Friday, January 22: **COLUMBUS (DELAWARE), OHIO:** Very Late Model Cat, John Deere, Komatsu Rentals, Aerials, Trucks and Trailers. **HIGHLIGHTS:** (2) 2018 Cat D8T, Cat D3GXL, (2) 2018 Cat 953D, (2) Cat 980M, Cat 966M, (3) 2019 Cat 938M.

5. **TIMED:** Wednesday, January 27 through Wednesday, February 3: **ORLANDO (KISSIMMEE), FLORIDA:** 2015 LearJet 70 Airplane. Fully Loaded, 2,000 hours. For Details Call (315) 439-7740. Ask for Scott.

6. **ONLINE AUCTION:** Friday, January 29: **QUERETARO, MEXICO:** Late Model Cat, Case, John Deere, Volvo Construction Equipment, Aerial Lifts, Forklifts, Trucks and Trailers, Large Quantity Attachments & Support Equipment.

7-15. **LIVE/TIMED:** Saturday, January 30 through Sunday February 7: **ORLANDO (KISSIMMEE), FLORIDA:** 28th Annual Florida Rental Return Auction of The Finest New and Like-New Construction, Utility Equipment, Aerial Lifts, Forklifts, Landscape Tractors, Cranes, Air Compressors, Welders, Light Plants, Generators, Golf & Utility Carts, Pickups, Service Trucks, Dump Trucks, Truck Tractors, Water Trucks, Plus Very Large Quantity of Attachments, Tires, Tanks and Much More.

16. **TIMED:** Thursday, February 25 through Thursday, March 4: **HOUSTON, TEXAS:** Late Model Rental Fleet Construction Equipment, Aerial Lifts, Forklifts, Utility Vehicles, Trucks and Trailers.

17. **LIVE:** Thursday, March 11: **FT. WORTH, TEXAS:** Late Model Rental Fleet Construction, Utility Equipment, Forklifts, Aerial Lifts, Support Equipment, Trucks, Trailers, Attachments.

18. **LIVE:** Friday, March 12: **DALLAS, TEXAS:** Major Job Completion. Late Model-Mostly Cat Construction Equipment, Dump Trucks, Truck Tractors, Service, Pickup and Utility Trucks, All Types of Trailers and Support Equipment.

19. **LIVE:** Saturday, March 13: **LAS VEGAS, NEVADA:** Late Model Rental Construction, Utility Equipment, Telescopic & Warehouse Forklifts, Large Quantity Boom & Scissor Lifts, Light Plants, Generators, Welders, Air Compressors, Pickups, Trailers and Support Equipment.

20. **LIVE:** Thursday, March 18: **CENTRAL, NEW JERSEY:** 2 Job Completions at Same Time. Large Cranes (Crawler, Rough Terrain), Large Quantity of Boom, Headache Balls, Tails, Accessories, Truck Tractors, Various Types of Trailers and Large Quantity Support (Quality Throughout).

21. **LIVE:** Friday, March 19: **PARKERSBURG, WEST VIRGINIA:** Late Model Cat Komatsu, John Deere Construction Equipment, Booms, Scissors, Forklifts, Truck Tractors, Dump Trucks, Service Trucks, Attachments & Tools.

22. **LIVE:** Wednesday, March 24: **HOUSTON, TEXAS:** Rentals, Rentals. Late Model Cat, Komatsu, John Deere Construction Equipment, Aerials, Forklifts, Trucks, Trailers, Service Trucks.

23. **LIVE:** Thursday, March 25: **SAN ANGELO, TEXAS:** Very Late Model Rental Fleet Construction, Utility Equipment, Attachments, Support, Trucks, Trailers.

24. **LIVE:** Saturday, March 27: **CENTRAL CONNECTICUT:** Retirement Auction. Over 51 years in Business. Construction, Utility, Aggregate Equipment, Dump Trucks, Truck Tractors, Service & Pickups, Various Trailers, Large Quantity Attachments and Shop Equipment.

25-27. **LIVE:** Thursday, April 8 through Saturday, April 10: **ATLANTIC CITY, NEW JERSEY:** Annual 3-Day Construction Equipment, Aerial Lift, Transportation, Support and Attachment Auction. The Finest Sale of Quality Equipment on the East Coast.

28. **LIVE:** Thursday, April 15: **PITTSBURGH, PENNSYLVANIA:** Multi-Job Completion Auction. Late Model Cat, John Deere, Komatsu Construction Equipment Plus Aerial Lifts, Forklifts, All Types of Trucks & Trailers, Attachments.

29. **LIVE:** Saturday, May 8: **PARKERSBURG, WEST VIRGINIA:** Complete Retirement Auction. Approximately 100 Antique Collectible Cars and Trucks Plus Truck Tractors and Trailers, that were used to Transport the Collectibles Properly. Small Amount of Late Model Skid Steers, Mini & Midi Excavators.

NEW DATES TO BE ANNOUNCED

30. **NEW ENGLAND:** Retirement Auction (over 70 years of collecting only the best). One of the Finest Collections of Antique Construction Equipment: Cat, Holt, JD, IH. Ag Equipment, Truck Tractors, Dump Trucks (Everything is Beautiful and Operating), Collectible Toys, Dolls, Large Quantity of Parts. Never Before has there been a Sale Like This.

31. **MONTREAL, CANADA:** Late Model Rental Returns, Utility Equipment, Aerials, Trucks, Trailers, Support Equipment.

32. **LINCOLN, MAINE:** Two Major Job Completions. 1 Very Large Forestry Featuring All Types of Logging Equipment and Trucks, and 1 Large Construction Equipment Spread of Later Model Cat, Komatsu, John Deere, New Holland Earthmoving Equipment, Forklifts, Aerials, Generators, Air Compressors and more.

33. **PORTLAND (AUBURN), MAINE:** Retirement Auction. Late Model Cat, Komatsu, Case, Volvo Construction Equipment, Plus Telehandlers, Generators, Boom & Scissor Lifts, Trucks, Trailers and Support.

34. **ATHENS (KNOXVILLE), TENNESSEE:** Four Prime Commercial Properties and Construction Equipment.

35. **FAYETTEVILLE, ARKANSAS:** Late Model Construction, Utility, Compact Equipment, Agricultural Tractors & Farm Implements, Large Quantity Landscape Equipment 0° Radius Movement, Utility Vehicles, 4-Wheelers and more.

36. **TORONTO, CANADA:** Late Model Rentals of Agricultural Equipment, Construction Equipment, Attachments, Tools, Support, Various Trucks and Trailers.

MAIN OFFICE

315.633.2944 • 315.633.2872 • 315.633.9544
EVENINGS: (315) 637-8912, FAX: (315) 633-8010

BRANCH OFFICES

ATLANTA, GA	770.537.7386	MOBILE, AL	251.510.1538
BRATTLEBORO, VT	802.490.7894	NASHVILLE, TN	615.922.5197
CHICAGO, IL	312.724.5474	NEW LONDON, CT	860.924.7735
COLUMBUS, OH	614.254.5596	OKLAHOMA CITY, OK	405.438.3188
DALLAS, TX	972.725.7761	PARKERSBURG, WV	304.699.3050
DENVER, CO	515.414.2868	RACINE, WI	262.886.2778
DES MOINES, IA	720.277.0263	ST. LOUIS, MO	314.570.4127
FORT WORTH, TX	817.807.2761	TAMPA, FL	813.777.3273
HARRISBURG, PA	717.836.0919	WASHINGTON, DC	202.888.6003
HOUSTON, TX	832.450.3910	MONTREAL, CA	514.949.7500
LAS VEGAS, NV	702.475.4992	OTTAWA, ON	514.916.4656

FOLLOW US:   

FINANCING AVAILABLE FOR PRE-APPROVED PURCHASERS: You must have prior written approval!

PATRIOT FINANCIAL LLC: Your one stop shop for all of your auction and equipment needs. For Immediate or pre-auction approval please call Customer Service at 866-633-6003 or you may apply on line with our secure site at www.patriotfinancialllc.com. You may also visit us at certain auctions to get your on-site approval. We do 100% financing, with no age restrictions and our minimum loan amount is \$5,000.00. We welcome new start-up business.

STREAMLINE FINANCIAL SERVICES is a nationally recognized lending specialist working with auction companies and vendors on a daily basis to assist their customers obtain financing for equipment. We offer a variety of financial solutions for light duty to heavy duty, titled equipment (trucks and trailers) to all non-titled equipment (yellow iron, aerial lifts, chippers, skid steers, etc). The representatives at Streamline Financial are experts in finding the best financial program for construction and transportation equipment. We have a solution for all levels of credit from A+ to challenged, and also offer Line of Credit and Working Capital programs to complement your businesses cash flow constraints. Please call Customer Service at 440-358-5060.

OAKMONT CAPITAL SERVICES, LLC is a fast, affordable, reputable solution to financing. Founded in 1998 by Managing Members Joe Leonard, CLFP and Megan Zoba. Oakmont Capital Services (OCS) is a direct lender, providing commercial equipment financing and working capital throughout all 50 states. The professional financing staff at OCS has the combined experience of over 250 years in the industry and specializes in both titled and non-titled equipment funding. For over 20 years, we've been helping customers secure financing while offering quick turnarounds, no down payments, application only financing, E-docs for speedy processing plus A, B, and C credit options. Call Mike Macy, Business Development Officer at 315-744-3626 for pre-approval.

SMART BUSINESS CREDIT & LEASING: For instant credit approvals, contact Customer Service at 800-798-6862, or visit our on-site trailer at select auctions. Also available is a secure online application: www.SmartBusinessCredit.com 100% financing or leasing & customized financial packages available (\$10,000 minimum).

SALES TAX: All sales are subject to sales tax.

SALES TAX EXEMPTIONS: Buyers with a VALID exemption certificate are not required to pay sales tax for equipment and miscellaneous, but MUST present a copy of their certificate at time of registration at EACH SALE.

EXPORTERS: If you take possession of your purchase in the United States, you must pay sales tax. You must provide the following in order not to be charged: Bill of Lading - All export purchases must be removed by a trucking company. The trucking company will provide a Bill of Lading with the purchases listed.

NOTE: No items will be released without this document or you may pay tax and be reimbursed once the Bill of Lading or a Dock Receipt is received.

MOTOR VEHICLES AND TRAILER EXEMPTIONS: Specific for each state. Please call office for exemption details.



7697 ROUTE 31, PO BOX 610
BRIDGEPORT, NY 13030

PRESORT
FIRST CLASS
U.S. POSTAGE
PAID
ROCHESTER, NY
PERMIT No. 944

All information contained in this brochure was derived from sources believed to be correct, but not guaranteed. We shall not be held liable for any typographical errors or inaccuracies in the content of this brochure. All announcements made day of sale supersede any printed material.



PLEASE SCAN
QR CODE
FOR UP-TO-DATE
CALENDAR AND
EQUIPMENT LISTS

RACINE, WISCONSIN
FRIDAY, JANUARY 15TH AT 9:30 AM

****ONSITE/VIRTUAL LIVE AUCTION****
2 AUCTIONS IN 1 DAY
UPDATE OF LARGE GROUP
TRUCK TRACTORS & THE ESTATE OF NORMAN MANTHE
(26)TRUCK TRACTORS PLUS A COMPLETE ESTATE OF LATE MODEL
CONSTRUCTION EQUIPMENT, EQUIPMENT TRAILERS, TRUCK TRACTORS



SYRACUSE (BRIDGEPORT), NEW YORK
OPENS: SATURDAY, JANUARY 16TH AT 8:00 AM
CLOSES: WEDNESDAY, JANUARY 20TH AT 12:00 NOON

****TIMED AUCTION****
VERY LARGE CONSTRUCTION
EQUIPMENT AUCTION

BOOM LIFTS, SCISSOR LIFTS, FORKLIFTS, SKID STEERS, AIR COMPRESSORS,
LIGHT PLANTS, GENERATORS, VERY LARGE QUANTITY SUPPORT,
ATTACHMENTS, TAGALONGS, PICKUPS AND SERVICES TRUCKS



SPECIAL NOTE: These auctions will be a **Live, In-Person event**. Masks required. All people attending must follow CDC guidelines for social distancing and hand-washing. Thank you in advance for adhering to these requirements, we appreciate your cooperation!

315.633.2944

lyonauction.com

lyonauctionlive.com

lyonmexico.com