



SALES MANAGERS & AUCTIONEERS

**BIG ENOUGH FOR
THE INDUSTRY LEADERS,
YET PERSONAL ENOUGH
FOR AMERICA'S FARMER.**

**AMERICA'S
AUCTION COMPANY**

DALLAS (LEWISVILLE), TEXAS - TUESDAY, APRIL 6TH AT 10:30 AM (CT)

2 AUCTIONS IN 1 DAY

****ONSITE/VIRTUAL LIVE AUCTION****

RETIREMENT AUCTION - COMPLETE LIQUIDATION - NORTH TEXAS CRANE

30 CRANES, BOOM TRUCKS, SERVICE TRUCKS, PICKUPS, FORKLIFTS, GENERATORS, ALL TYPES OF LATE MODEL TRUCK TRACTORS, DETACHABLE, STEP DECK & HI-FLAT TRAILERS, QUANTITY OF BOOM & SCISSOR LIFTS, ACCESSORIES & SHOP TOOLS



ATLANTIC CITY, NEW JERSEY (AC RACE TRACK)

THURSDAY, APRIL 8TH, FRIDAY, APRIL 9TH AND SATURDAY, APRIL 10TH AT 9:00 AM

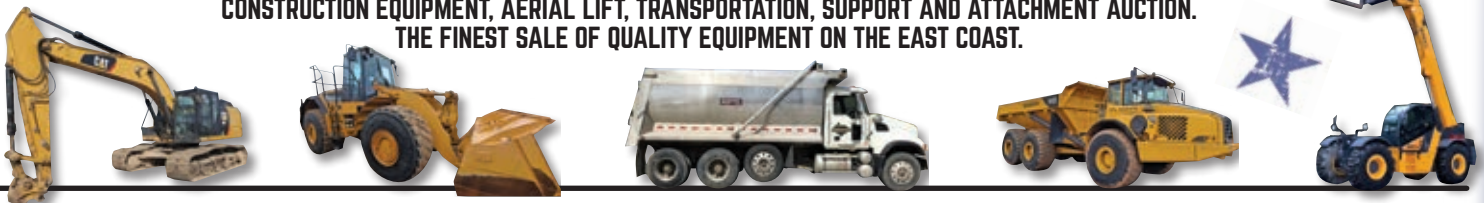
HercRentals™

****ONSITE/VIRTUAL LIVE AUCTION****

ANNUAL 3-DAY AUCTION

LATE MODEL RENTAL FLEET CONSTRUCTION EQUIPMENT AUCTION

CONSTRUCTION EQUIPMENT, AERIAL LIFT, TRANSPORTATION, SUPPORT AND ATTACHMENT AUCTION.
THE FINEST SALE OF QUALITY EQUIPMENT ON THE EAST COAST.



BIRMINGHAM (WOODLAND), ALABAMA

OPENS: SAT., APRIL 10TH AT 12:00 PM (CST) - CLOSING: WED., APRIL 14TH AT 12:00 PM (CST)

****TIMED AUCTION****

MAJOR OIL FIELD JOB COMPLETION



SPECIAL NOTE: These auctions will be a **Live, In-Person event**. Masks required. All people attending must follow CDC guidelines for social distancing and hand-washing.
Thank you in advance for adhering to these requirements, we appreciate your cooperation!

ALEX LYON & SON SALES MANAGERS & AUCTIONEERS, INC.

2021

7697 ROUTE 31, PO BOX 610, BRIDGEPORT, NY 13030 315-633-2944 FAX: 315-633-8010 LYONAUCTION.COM

ONSITE/VIRTUAL LIVE AUCTION

Please feel free to preview any of our Virtual Live or Timed Auction sale sites 5 days before auction day!

DALLAS (LEWISVILLE), TEXAS - TUESDAY, APRIL 6TH AT 10:30 AM (CT)

ADDRESS: 1120 Texas Street, Lewisville, Texas 75057. **NOTE:** Everybody in the industry knows the owner of North Texas Crane, Del, in business well over Half a Century, has decided to retire and enjoy the next 50+ years of his life and sell completely to the walls. **EXTRA NOTE:** All of the North Texas Crane equipment will be sold live in-person at their yard except 16 Crawler Cranes from a privately-held company, they will sell off-site at 23677 Highway 48, Woodland, Alabama 36280. **SPECIAL NOTE:** This part of the auction will be a Live, In-Person event. Masks required. All people attending must follow CDC guidelines for social distancing and hand-washing. Thank you in advance for adhering to these requirements, we appreciate your cooperation! **SALE SITE PHONE:** (315) 633-2944. **TEXAS AUCTION LICENSE:** #15791 Jack H Lyon. **TERMS & CONDITIONS:** "Cash or Company Check" accompanied by current "Bank Letter of Guarantee", made payable to Alex Lyon & Son. Everything Sells "AS IS, "WHERE IS." The following charges will apply on all purchases: (1.) For each unit \$35,001.00 and above, a 5.99% administration fee will be assessed when paying with cash or good check. (The standard fee of 8.99% will be assessed when paying with credit card); and (2.) For each unit \$1,001- \$35,000, a 10% administration fee will be assessed when paying with cash or good check, and a 13% fee will be assessed when paying with credit card. (3.) For each unit \$0- \$1,000, a 12.5% administration fee will be assessed when paying with cash or good check, and a 15.5% fee will be assessed when paying with credit card. ****Please NOTE: An additional fee may be assessed when bidding online****



FOR BID ONLINE TECHNICAL ASSISTANCE CALL
Proxibid: (855) 636-6461
Nextlot: (919) 361-1111

5 ALL TERRAIN CRANES



2013 GROVE GMK5165 SN:5130-7047 diesel engine, 165 ton capacity, 42ft-167ft boom, swing away jib, dual winch, block and ball, hydraulic counterweight removal, 445/95R25 rubber, 5 axles.



2000 GROVE GMK5180 / 5210 SN:5180-8089 Cummins diesel engine, 210 ton capacity, 197ft main boom, 72ft swing away jib, Ton with 197ft main boom, 72ft swing away jib, main and auxiliary winch, block, 20.5R25 rubber, 5 axles.



2012 GROVE GMK5165 SN:5130-7059 diesel engine, 165 ton capacity, 42ft-167ft boom, dual winch, block and ball, hydraulic counterweight removal, 445/95R25 rubber, 5 axles.



2009 GROVE GMK5165-2 SN:5130-3075 diesel engine, 165 ton capacity, 42ft-167ft boom, dual winch, block and ball, hydraulic counterweight removal, 445/95R25 rubber, 5 axles.



2006 GROVE GMK5165 SN:5130-2164 diesel engine, 165 ton capacity, 42ft-167ft boom, swing away jib, dual winch, block and ball, hydraulic counterweight removal, 445/95R25 rubber, 5 axles.

TRUCK CRANES



2011 LINKBELT HTC86100 SN:N3K12484 Cat C13 diesel engine, automatic transmission, 100 ton lift capacity, 38ft- 140ft. 5-section boom, 35ft-58ft. swing away offset bifold jib, anti-two block, LMI, main and auxiliary winch, cwt removal device, 5th outrigger, 445/65R22.5 front tires, 11R22.5 rear tires.



2010 GROVE TMS9000E VN:476S90005AS231000 Cummins ISM diesel engine, Eaton Fuller 9LL transmission, tilt cab, 90 ton lift capacity, rooster sheave, 142ft. 5-section boom, anti-two block, Grove EKS5 LMI, main and auxiliary winch, 48500lbs of counterweights, counterweight removal device, 5th outrigger, 445/65R22.5 front tires, 11R22.5 rear tires.

11 LATTICE BOOM CRAWLER CRANES



2008 KOBELCO CK1000 SN:GH0302122 Hino AAP11CUN 10.5L, 100 ton lift capacity, 150ft. 7-section tubular boom, PLL, anti-two block, two winches, ind swing and travel, expandable chassis.



2014 LINKBELT LS218HSL SN:LS1385029 Isuzu diesel engine, Cab, 80 ton lift capacity, 2 drums, front auxiliary hydraulics for 3rd drum, 80ft. angle boom, rooster sheave, 36in. flat pads, hydraulically extendable track frames, self assembly system, counterweight removal, 52200lb rear counterweight, 4 sheave hook block, 15,419 hours. Selling Offsite: 16485 Co Rd 59, Woodland, AL 36280. Call Scott for more information: 256-846-0231.

LYON



2014 LINKBELT LS218HSL SN:P8K43980 Isuzu diesel engine, Cab, 80 ton lift capacity, 2 drums, front auxiliary hydraulics for 3rd drum, 90ft. angle boom, 36in. flat pads, hydraulically extendable track frames, self assembly system, counterweight removal, 52200lb rear counterweight, 4 sheave hook block, 5,379 hours. Selling Offsite: 16485 Co Rd 59, Woodland, AL 36280. Call Scott for more information: 256-846-0231.



2012 LINKBELT LS218HSL SN:N6K22744 Isuzu diesel engine, Cab, 110 ton lift capacity, 2 drums, auxiliary hydraulics for front 3rd drum, 90ft. angle boom, rooster sheave, 36in. flat pads, hydraulically extendable track frames, self assembly system, counterweight removal, 41880lb rear counterweight, (2) 11,100lb side counterweights, 4 sheave hook block, 11,793 hours. Selling Offsite: 16485 Co Rd 59, Woodland, AL 36280. Call Scott for more information: 256-846-0231.



2012 LINKBELT LS218HSL SN:N6K22821 Isuzu diesel engine, Cab, 110 ton lift capacity, 2 drums, auxiliary hydraulics for front 3rd drum, 90ft. angle boom, rooster sheave, 36in. flat pads, hydraulically extendable track frames, self assembly system, counterweight removal, 41880lb rear counterweight, (2) 11,100lb side counterweights, 4 sheave hook block, 9,548 hours. Selling Offsite: 16485 Co Rd 59, Woodland, AL 36280. Call Scott for more information: 256-846-0231.



2012 LINKBELT LS218HSL SN:N6K12361 Isuzu diesel engine, Cab, 110 ton lift capacity, 2 drums, auxiliary hydraulics for front 3rd drum, 90ft. angle boom, rooster sheave, 36in. flat pads, hydraulically extendable track frames, self assembly system, counterweight removal, 41880lb rear counterweight, (2) 11,100lb side counterweights, 4 sheave hook block, 12,242 hours. Selling Offsite: 16485 Co Rd 59, Woodland, AL 36280. Call Scott for more information: 256-846-0231.



2006 LINKBELT LS218HSL SN:N6J68924 Isuzu diesel engine, Cab, 110 ton lift capacity, 3rd drum, 90ft. tubular boom, 36in. flat pads, hydraulically extendable track frames, self assembly system, counterweight removal, 41880lb rear counterweight, (2) 11,100lb side counterweights, 4 sheave hook block, 19,707 hours. Selling Offsite: 16485 Co Rd 59, Woodland, AL 36280. Call Scott for more information: 256-846-0231.



2008 LINKBELT LS138H II SN:H7JL5893, Isuzu diesel engine, Cab, 80 ton lift capacity, 2 drums, front auxiliary hydraulics for 3rd drum, 80ft. angle boom, rooster sheave, 36in. flat pads, hydraulically extendable track frames, self assembly system, counterweight removal, 2 piece 50,500lb rear counterweight, 4 sheave hook block, New hour meter with 137 hours. Selling Offsite: 16485 Co Rd 59, Woodland, AL 36280. Call Scott for more information: 256-846-0231.



2006 LINKBELT LS138H II SN:H7J15923 Isuzu diesel engine, Cab, 80 ton lift capacity, 2 drums, front auxiliary hydraulics for 3rd drum, 80ft. angle boom, rooster sheave, 36in. flat pads, hydraulically extendable track frames, self assembly system, counterweight removal, 2 piece 50,500lb rear counterweight, 4 sheave hook block, 7,986 hours. Selling Offsite: 16485 Co Rd 59, Woodland, AL 36280. Call Scott for more information: 256-846-0231.



2003 LINKBELT LS138H II SN:H7J02513 Isuzu diesel engine, Cab, 80 ton lift capacity, 2 drums, front auxiliary hydraulics for 3rd drum, 90ft. angle boom, rooster sheave, 36in. flat pads, hydraulically extendable track frames, self assembly system, counterweight removal, 2 piece 50,500lb rear counterweight, 4 sheave hook block, 8,473 hours. Selling Offsite: 16485 Co Rd 59, Woodland, AL 36280. Call Scott for more information: 256-846-0231.



2000 LINKBELT LS138H II SN:H7191769 Isuzu diesel engine, Cab, 80 ton lift capacity, 2 drums, front auxiliary hydraulics for 3rd drum, 90ft. angle boom with 20ft. open throat peak section, rooster sheave, 36in. flat pads, hydraulically extendable track frames, self assembly system, counterweight removal, 2 piece 50,500lb rear counterweight, 4 sheave hook block, 9,562 hours. Selling Offsite: 16485 Co Rd 59, Woodland, AL 36280. Call Scott for more information: 256-846-0231.

6 TELESCOPIC CRAWLER CRANES



2013 LINKBELT TCC 750 SN:R8K33738 Cummins diesel engine, Cab, 75 ton lift capacity, main & auxiliary winches, 38.6ft.-115.6ft. (4) section boom, 36in. TBG pads, hydraulically extendable track frames, 3 piece 35000lb rear counterweight, 5000lb carbody counterweight, 4 sheave hook block, 8,899 hours. Selling Offsite: 16485 Co Rd 59, Woodland, AL 36280. Call Scott for more information: 256-846-0231.



2013 LINKBELT TCC 750 SN:R8K33071 Cummins diesel engine, Cab, 75 ton lift capacity, main & auxiliary winches, new 38.6ft.-115.6ft. (4) section boom, 36in. TBG pads, hydraulically extendable track frames, 3 piece 35000lb rear counterweight, 5000lb carbody counterweight, 4 sheave hook block, 8,769 hours. Selling Offsite: 16485 Co Rd 59, Woodland, AL 36280. Call Scott for more information: 256-846-0231.





2012 LINKBELT TCC 750 SN:R8K12406 Cat C6.6 diesel engine, Cab, 75 ton lift capacity, main & auxiliary winches, 38.6ft.-115.6ft. (4) section boom, 36in. TBG pads, hydraulically extendable track frames, 3 piece 35000lb rear counterweight, 5000lb carbody counterweight, 4 sheave hook block, 8,900 hours. Selling Offsite: 16485 Co Rd 59, Woodland, AL 36280. Call Scott for more information: 256-846-0231.



2014 LINKBELT TCC 450 SN:R2K43508 Isuzu diesel engine, Cab, 45 ton lift capacity, main & auxiliary winches, 33ft.-105ft. (4) section boom, 20ft. offset fly jib, 32in. TBG pads, hydraulically extendable track frames, 25,800lb (4) piece rear counterweight, 4 sheave hook block, 3,690 hours. Selling Offsite: 16485 Co Rd 59, Woodland, AL 36280. Call Scott for more information: 256-846-0231.



2014 LINKBELT TCC 450 SN:R2K43310 Isuzu diesel engine, Cab, 45 ton lift capacity, main & auxiliary winches, 33ft.-105ft. (4) section boom, 20ft. offset fly jib, Trimble GS550 multi sensor display, 32in. TBG pads, hydraulically extendable track frames, 25,800lb (4) piece rear counterweight, 4 sheave hook block, 2,721 hours. Selling Offsite: 16485 Co Rd 59, Woodland, AL 36280. Call Scott for more information: 256-846-0231.



2010 LINKBELT TCC 450 SN:R2K01923 Isuzu diesel engine, Cab, 45 ton lift capacity, main & auxiliary winches, 33ft.-105ft. (4) section boom, 20ft. offset fly jib, 32in. TBG pads, hydraulically extendable track frames, 25,800lb (4) piece rear counterweight, 4 sheave hook block, 7,630 hours. Selling Offsite: 16485 Co Rd 59, Woodland, AL 36280. Call Scott for more information: 256-846-0231.

4 ROUGH TERRAIN CRANES



2008 LINKBELT RTC8090 SN:N4J80370 Caterpillar C6.6 ACERT 6 cylinder, Cab, 90 ton lift capacity, rooster sheave, 38ft- 140ft. 4 section boom, 58ft. swing away offset bifold jib, anti-two block, LMI, 28800 counterweight, counterweight removal device, 29.5x25 rubber.



2007 GROVE RT700E SN:225828 Cummins diesel engine, 60 ton capacity, 36ft-110ft. boom, 33ft-56ft. JIB, dual winch, block and ball, 29.5-25 rubber.



MANITEX M150 ROUGH TERRAIN CRANE 4x4, Cummins QSB 4.5L diesel engine, 160hp, EROPS, 15 ton lift capacity, 3-section 62.5ft. proportional boom, 85.5ft. max tip height, 7,500lb counterweight, (4) hydraulic stabilizers.



MANITEX M150 SN:229184 4x4, Cummins QSB 4.5L diesel engine, 160hp, EROPS, 15 ton lift capacity, 3-section 62.5ft. proportional boom, 85.5ft. max tip height, 7,500lb counterweight, (4) hydraulic stabilizers.

3 TRENCH ROLLERS

2012 BOMAG BMP8500 VN:101720112200 diesel engine, 33in. padsfoot drums, vibratory drum, double drum, drum drive.

2012 WACKER RT82-SC2 SN:20122794 diesel engine, 33in. Padsfoot drum, vibratory drum, double drum, drum drive, remote.

2012 WACKER RT82-SC2 SN:20124040 diesel engine, 33in. Padsfoot drum, vibratory drum, double drum, drum drive, remote.

TELESCOPIC FORKLIFTS

LULL 1044C54 SN:19060 4x4, diesel engine, EROPS, 10,000lb capacity, 54ft. reach, front stabilizers, forks.

GEHL RS842 VN:RS842JZ0216846 4x4, diesel engine, EROPS, 8,000lb capacity, 42ft. reach, forks.

SCISSOR LIFT

2013 GENIE AWP-30S SN:AWP13-76815 electric powered, 30ft. platform height.

GENERATOR



2012 BALDOR IDLC275 SN:110110006 diesel engine, 250KW, 313kva, 3 phase, towable, tandem axle.

CONCRETE EQUIPMENT

2013 MULTQUIP WBH16F CONCRETE BUGGY SN:130839 gas engine, 16 cubic foot capacity, ride on.

12 CRANE ACCESSORIES

2009 GROVE GMK5275 REBUILT REAR AUXILIARY WINCH

(10) MISC BOOM SECTIONS



CRANE BASKET

HYDRAULIC HAMMERS

NEW TROJAN 50CL 45mm pins fits to: Cat 305, 305.5 Komatsu PC45/50/55, Hyundai R55, Hitachi/Deere 50D/G, Case, New Holland, Kobelco SK50, Bobcat E50/341/337.

NEW TROJAN 35CL 40mm pin fits to: Cat 303, 303.5, 304, Case, New Holland, Kobelco SK35, Deere/Hitachi 35D/G.

SKID STEER ATTACHMENT

NEW TROJAN HYDRAULIC HAMMER

4 TRUCK TRACTORS



2019 PETERBILT 389 Cummins X15 engine, 565hp, 18 speed transmission, a/c, power windows, locks and mirrors, double frame, long fifth wheel plate, 20,000lb front axle, 46,000lb rears, 22,700lb air lift axle, air ride suspension, aluminum wheels, 425/65R22.5 front tires, 11R24.5 rear, triaxle, 98,000 miles.



2019 PETERBILT 389 Cummins X15 engine, 565hp, 18 speed transmission, a/c, power windows, locks and mirrors, double frame, long fifth wheel plate, 20,000lb front axle, 46,000lb rears, 22,700lb air lift axle, air ride suspension, aluminum wheels, 425/65R22.5 front tires, 11R24.5 rear, triaxle, 85,000 miles.

2013 PETERBILT 384 VN:1XPVD79XXDD201596 diesel engine, 13 speed transmission, a/c, sleeper, air ride suspension, 11R22.5 tires, tandem axle.



2007 WESTERN STAR 4900FA

VN:5KJNAECK27PX98485 Detroit diesel engine, 515hp, 13 speed transmission, a/c, double frame, 46,000lb rear axles, aluminum wheels, 11R24.5 tires, steerable airlift axle, triaxle, 385,596 miles.

17 PICKUP TRUCKS



2018 DODGE RAM 2500 VN:3C6UR5CL3JG142163 4x4, Cummins diesel engine, automatic transmission, a/c, power windows, locks and mirrors, towing package, 4-door, short box, 111,249 miles.



2018 DODGE RAM 2500 VN:3C6UR5CL2JG109168 4x4, Cummins diesel engine, automatic transmission, a/c, power windows, locks and mirrors, towing package, 4-door, short box, 134,832 miles.

2018 DODGE RAM 2500 VN:3C6UR5CL4JG109169 4x4, Cummins diesel engine, automatic transmission, a/c, power windows, locks and mirrors, towing package, 4-door, short box, 134,347 miles.



2018 DODGE RAM 2500 VN:3C6UR5CL0JG107869 4x4, Cummins diesel engine, automatic transmission, a/c, power windows, locks and mirrors, towing package, 4-door, short box, 141,246 miles.



2017 DODGE RAM 2500HD VN:3C6UR5ML7HG648457 4x4, Cummins diesel engine, automatic transmission, a/c, Lone Star package, power windows, locks and mirrors, towing package, 4-door big cab, short box.



2016 DODGE RAM 1500 VN:1C6RR6LT5GS324282 5.7L engine, automatic transmission, a/c, LoneStar package, power windows, locks and mirrors, big screen, leather seats, center console, 4-door, short box.

2015 DODGE 1500 SN:1C6RR6FT6F583891 gas engine, automatic transmission, power steering.



2017 CHEVY SILVERADO 2500

VN:1GC1KUEG1HF219439 4x4, 6.0L gas engine, automatic transmission, a/c, power windows, locks and mirrors, towing package, 4-door, 8ft. box, 107,099 miles.



2017 CHEVY SILVERADO 2500

VN:1GC1KUEG3HG247372 4x4, 6.0L gas engine, automatic transmission, a/c, power windows, locks and mirrors, towing package, 4-door, 8ft. box, 123,508 miles.



2017 CHEVY SILVERADO 2500

VN:1GC1KUEG6HF248869 4x4, 6.0L gas engine, automatic transmission, a/c, power windows, locks and mirrors, towing package, 4-door, 8ft. box.



2017 CHEVY SILVERADO 2500

VN:1GC1KUEG9HF237025 4x4, 6.0L gas engine, automatic transmission, a/c, power windows, locks and mirrors, towing package, 4-door, 8ft. box, 43,445 miles.



2017 CHEVY SILVERADO 2500

VN:1GC1KUEG7HF248797 4x4, 6.0L gas engine, automatic transmission, a/c, power windows, locks and mirrors, towing package, 4-door, 8ft. box, 103,475 miles.



2017 CHEVY SILVERADO 2500

VN:1GC1KUEG7HF208929 4x4, 6.0L gas engine, automatic transmission, a/c, power windows, locks and mirrors, towing package, 4-door, 8ft. box, 111,527 miles.

2019 FORD F350XL 4x4, 6.7L diesel engine, automatic transmission, a/c, power windows, locks and mirrors, towing package, extended cab, utility box, 39,000 miles.



2010 FORD F250 VN:1FTSW2AR8AEA32540 diesel engine, automatic transmission, a/c, power windows, locks and mirrors, towing package, 4-door, 8ft. box.

2019 FORD F150 gas engine, automatic transmission, power steering.

2015 NISSAN FRONTIER SN:1N6AD0ER9FN762204 gas engine, automatic transmission, power steering.

3 SERVICE TRUCKS



2009 KENWORTH T300 VN:2NKHMH5H79M940277 Paccar PX6 diesel engine, 220hp, Allison 1000RDS automatic transmission, a/c, covered service body, Palfinger PC2300 crane, rear lift gate, 255/70R19.5 tires, dual wheel single axle, 35,371 miles.



2012 FORD F550XL VN:1FDUF5GY4CEB86668 6.8L gas engine, automatic transmission, a/c, towing package, Knapheide service body, Stellar 3315 crane, MI-T-M air compressor/generator/welder, product tanks, hose reels, dual rear wheels.



2006 FORD F750XL VN:3FRXF75X66V331194 Cat C7 diesel engine, automatic transmission, a/c, air brakes, Curry service body, hose reels, generator, 11R22.5 tires, dual wheel single axle.

OIL FIELD DETACHABLE GOOSENECK TRAILER



2014 SCONA VN:2E9L70F55E3003858 70 ton capacity, 9ft. width, non ground bearing, Honda pony motor, front flip neck, rolling tailboard, air ride suspension, 265/70R19.5 tires, 5-axle, sells with 2013 Scona model TAT-20-2ASS booster, 50,155lb GVWR, air ride suspension, 265/70R19.5 tires, tandem axle, 2013 Scona jeep air ride suspension, tandem axle.

EQUIPMENT TRAILER



2013 KAUFMAN VN:5SHAD432XDB000759 43ft. length, 102in. wide, 12ft. top deck, rear beavertail with steel ramps, 215/75R22.5 tires, tandem axle.

3 DROP DECK TRAILERS

2008 FONTAINE VN:13N24820181546705 48ft. length, 102in. wide, 80,000 GVWR, air ride suspension, 255/70R22.5 tires, tandem axle.



2006 TRANSCRAFT EAGLE RS2 VN:1TTE5320461078505 53ft. length, 102in. wide, 11ft. top deck, GVWR 80,000lb, aluminum deck, air ride suspension, aluminum wheels, 255/70R22.5 tires, sliding rear axle, tandem axle.



2001 PHELAN TSDW80K VN:40FL0482913020626 48ft. length, 102in. wide, 10ft. top deck, air ride suspension, 255/70R22.5 tires, spread axle, tandem axle.

5 FLATBED TRAILERS



2015 DOONAN VN:1D9BV4822F1609324 48ft. length, 102in. wide, 90,000lb GVWR, air ride suspension, aluminum wheels, 11R24.5 tires, spread axle, tandem axle.

2015 DOONAN VN:1D9BV4820F1609418 48ft. length, 102in. wide, 90,000lb GVWR, air ride suspension, aluminum wheels, 11R24.5 tires, spread axle, tandem axle.



2015 FONTAINE HCVSF12WSA VN:13N148208F1569746 48ft. length, 102in. wide, 80,000 GVWR, air ride suspension, 295/75R22.5 tires, spread axle, tandem axle.

2001 FREUHAUF VN:N/A 48ft. length, 96in. wide, aluminum deck, spring suspension, aluminum wheels, 285/75R24.5 tires, sliding tandem axle.



2000 FREUHAUF VN:1JJF482F2YS633119 48ft. length, 102in. wide, 80,000 GVWR, air ride suspension, 11R24.5 tires, spread axle, tandem axle.

TAGALONG TRAILER



EAST TEXAS 2,990lb GVWR, 12ft deck, lay down ramp, single axle.

14 BOOM DOLLY TRAILERS

2007 K-LINE 75,000 GVWR, air ride suspension, 275/70R22.5 tires, 4-axle.



2006 NELSON CBC-30RT VN:012237 27,600 GVWR, air ride suspension, 255/70R22.5 tires, 3-axle.



NELSON CBC-20ST 24,020 GVWR, air ride suspension, 11R22.5 tires, 2-axle



NELSON CBC-20ST VN:012234 48,000 GVWR, 22.5 tires, 2-axle.



NELSON CBC-30S VN:012504 64,800 GVWR, air ride suspension, 11R22.5 tires, 2-axle.



NELSON CBC-30S VN:012383 air ride suspension, 11R22.5 tires, 3-axle.



NELSON CBC-20S VN:012396 11R22.5 tires, 2-axle. VN:650180 air ride suspension, 11R22.5 tires, 3-axle.



(2) 11R22.5 tires, 2-axle.



285/75R24.5 tires, 2-axle.



10.00-20 tires, 2-axle.



445/65R22.5 tires, 3-axle.



22.5 tires, 2-axle.

WATER TRAILER

2013 WYLIE EXP500S SN:5VUTW1320DP000445 gas engine, 500 gallon water tank.

UTILITY VEHICLES

2013 KUBOTA RTV1140CPX-H SN:25296 4x4, Kubota diesel engine, OROPS, utility body, 4-seater.

2013 KUBOTA RTV1140CPX-H SN:30170 4x4, Kubota diesel engine, OROPS, utility body, 4-seater.

4 CONTAINERS

40FT. SN:CRXU1921712

20FT. SN:OOLU3550306

20FT. SN:2083819

20FT. SN:2069030

PAINT BOOTH



20ft width, 46ft length, galvanized steel, lighting, ventilation fans.

PRESSURE WASHERS

2013 MI-T-M HS-3506-0MGH SN:15087087 diesel engine.



ALKOTA 8307K kubota diesel engine, 500 gallon water tank, 35 gallon product tank, hot water, hose reels, mounted on tandem axle trailer tagalong trailer

HEATING EQUIPMENT

2010 MI-T-M MH-0150-LMT0 150K BTU HEATER SN:HGFMO902029

2007 HEATSTAR HS170FAVT 150K BTU HEATER SN:MHC701700011286

46 NEW SUPPORT EQUIPMENT

- (3) NEW MUSTANG LF88 PLATE COMPACTOR
- (4) NEW MUSTANG MP4800 2IN. SUB PUMP
- (2) NEW MUSTANG CV3500 CONCRETE VIBRATOR
- (8) NEW 3 PC. 14IN. PREMIUM DIAMOND BLADES
- (8) NEW 25FT., 800AMP EXTRA HD BOOSTER CABLE
- (6) NEW 2IN. X 50FT. DISCHARGE WATER HOSE
- (4) NEW AUTO DARKENING WELDING HELMET
- (2) NEW HUSKIE B65 ELECTRIC DEMO HAMMER
- (2) NEW HUSKIE 11218SDS HAMMER DRILLS
- (3) NEW 1/2IN. DRIVE AIR IMPACT WRENCH KIT
- NEW 12V DIESEL FUEL PUMP
- (2) NEW 6PK. 14IN. ABRASIVE BLADES
- NEW GREASE GUN

66 SUPPORT EQUIPMENT

(50) QTY OF welders, crane blocks, crane balls, rigging equipment, fuel tanks, tool boxes, tires.

2011 CASE 2-350 SCRUBBER SN:5831

2011 WACKER M3000 CONCRETE VIBRATOR SN:10054334

2011 GRAINGER 16FT. EXTENSION LADDER

2012 APT 5302 AIR HAMMER SN:1202031M654

2011 CATALYTIC 7SXC-3P SCRUBBER SN:69476

2012 CELAN EMIS 1-200 SCRUBBER SN:7493

2013 MULTQUIP MTX80SD RAMMER SN:W1504 gas engine.

2011 MULTQUIP GA6HA1 GENERATOR SN:5659641 gas engine.

2012 HYSTER W40Z PALLET JACK SN:B218N23536K electric powered.

2010 CLARKE FM1700HD 01014A FLOOR POLISHER SN:3923 electric powered.

2013 AMERIC VAF3000A BLOWER SN:MAFB115VPPMM081

2014 TPI PBS48-B 48IN. FLOOR FAN

2014 GRAINGER 7AP14 48IN. FLOOR FAN SN:13659289

2014 WESCO 272660 PALLET JACK SN:14061246-5/055

2012 STIHL TS420 CUTOFF SAW SN:175355538

2011 BILJAX DRYWALL DOLLY



****ONSITE/VIRTUAL LIVE AUCTION****

Please feel free to preview any of our Virtual Live or Timed Auction sale sites 5 days before auction day!

ATLANTIC CITY, NEW JERSEY (AC RACE TRACK)

THURSDAY, APRIL 8TH, FRIDAY, APRIL 9TH AND SATURDAY, APRIL 10TH AT 9:00 AM

ADDRESS: 4501 Leipzig Ave, Mays Landing, New Jersey 08330. **NOTE:** This sale promises to have the very best Construction Equipment, Aerials, Forklifts, Trucks & Trailers found anywhere. **SPECIAL NOTE:** This part of the auction will be a Live, In-Person event. Masks required. All people attending must follow CDC guidelines for social distancing and hand-washing. Thank you in advance for adhering to these requirements, we appreciate your cooperation! **SALE SITE PHONE:** (609) 204-3189 Jay. **TERMS & CONDITIONS:** "Cash or Company Check" accompanied by current "Bank Letter of Guarantee", made payable to Alex Lyon & Son. Everything Sells "AS IS, "WHERE IS." The following charges will apply on all purchases: (1.) For each unit \$35,001.00 and above, a 5.99% administration fee will be assessed when paying with cash or good check. (The standard fee of 8.99% will be assessed when paying with credit card); and (2.) For each unit \$1,001- \$35,000, a 10% administration fee will be assessed when paying with cash or good check, and a 13% fee will be assessed when paying with credit card. (3.) For each unit \$0- \$1,000, a 12.5% administration fee will be assessed when paying with cash or good check, and a 15.5% fee will be assessed when paying with credit card. ****Please NOTE: An additional fee may be assessed when bidding online****



FOR BID ONLINE TECHNICAL ASSISTANCE CALL
Proxibid: (855) 636-6461
Nextlot: (919) 361-1111

DAY 1

THURSDAY, APRIL 8TH

Dump Trucks, Mason Dumps, Truck Tractors, Bucket Trucks, Rollback & Rolloff Trucks, Drilling Rig Trucks, Yard Horses, Cab & Chassis, Van Trucks, Utility & Military Trucks, Tow Trucks, Garbage Trucks, Digger Derrick Trucks, Flatbed Trucks, Cement Mixer & Cement Block Trucks, Pickups, SUVs, Vans, Containers, Dump Bodies, Rolloff Trailers, Van Trailers, Walking Floor Trailers, Drop Deck & Cement & Asphalt Tanker Trailers, Fuel Trailers, Utility & Equipment & Detachable Trailers, Flatbed Trailers, Tagalong & Dump Trailers, Office Trailers, Truck Parts, Recreational Vehicles, Water Pumps, Pressure Washers, Decorative Stones, Support-Office & Survey Equipment, Pallets of Stone, Large Quantity of Support Equipment.

29 DUMP TRUCKS

(2) "UNUSED" DUE TO CANCELED ORDER 2021

PETERBILT 567 VN:N/A Cummins X15 diesel engine, Eaton FO17E308LL-VCS 10 speed Ultra Shift plus transmission, power steering, a/c, engine brake, block heater, 26in. aluminum 135 gallon fuel tank, prestige sterling gray interior, power locks & windows, 17ft. Aluminum dump body, 224in. Wheelbase, Paccar 20,000lb fronts, Meritor RT46-160 46,000lb rears, Hendrickson EXS20 20,000lb steerable air lift pusher axle, ABS air brake system, 4.10 rear axle. 385/65R22.5 front tires, 11R24.5 rear tires, 385/65R22.5 pusher tires, triaxle. Full Warranty. FET APPLIES.

2016 PETERBILT 389L VN:M300520 Cummins diesel engine, 550hp, 18 speed transmission, platinum interior package, power steering, 17ft.6in. J&J dump body, high lift & tailgate, vibrator, air lift third axle, triaxle.

1998 PETERBILT 330 VN:447947 Cat diesel engine, 300hp, 9 speed transmission, power steering, New dump body,

(2) 2011 MACK CH VN:N/A Mack MP7 diesel engine, 400hp, power steering, 16ft. Ox steel dump body, steerable air lift axle, triaxle.

LYON



2007 MACK CV713 VN:M055852 Mack diesel engine, 400hp, Mack 10 speed transmission, power steering, 17ft. Aluminum dump body, 44,000lb rears, air ride suspension, air lift third axle, triaxle.



2007 MACK CV713 VN:M055847 Mack diesel engine, 400hp, Mack 10 speed transmission, power steering, 17ft. Aluminum dump body, 44,000lb rears, air ride suspension, air lift third axle, triaxle.



2007 MACK CV713 VN:M055854 Mack diesel engine, 400hp, Mack 10 speed transmission, power steering, 17ft. Aluminum dump body, 44,000lb rears, air ride suspension, air lift third axle, triaxle.



2007 MACK CV713 VN:M055845 Mack diesel engine, 400hp, Mack 10 speed transmission, power steering, 17ft. Aluminum dump body, 44,000lb rears, air ride suspension, air lift third axle, triaxle.



2007 MACK CV713 VN:M055853 Mack diesel engine, 400hp, Mack 10 speed transmission, power steering, 17ft. Aluminum dump body, 44,000lb rears, air ride suspension, air lift third axle, triaxle.

2006 MACK CV713 VN:M035904 Mack E7 diesel engine, 460hp, Eaton Fuller 18 speed transmission, power steering, 20,000lb fronts, 20,000lb pusher axle, 44,000lb rear axles, 425/65R22.5 front tires, 275/70R22.5 Dayton pusher tires, 11R22.5 Dayton rear tires, triaxle.

2006 MACK CV713 VN:M035903 Mack E7 diesel engine, 460hp, Eaton Fuller 18 speed transmission, power steering, 20,000lb fronts, 20,000lb pusher axle, 44,000lb rear axles, 425/65R22.5 front tires, 275/70R22.5 Dayton pusher tires, 11R22.5 Dayton rear tires, triaxle.

2004 MACK CV713 VN:M009324 Mack E7 diesel engine, 460hp, Eaton Fuller 18 speed transmission, power steering, 20,000lb fronts, 20,000lb pusher axle, 44,000lb rear axles, 425/65R22.5 front tires, 275/70R22.5 Dayton pusher tires, 11R22.5 Dayton rear tires, triaxle.

2003 MACK CV713 VN:M005908 Mack E7 diesel engine, 460hp, Eaton Fuller 18 speed transmission, power steering, 20,000lb fronts, 20,000lb pusher axle, 44,000lb rear axles, 425/65R22.5 front tires, 275/70R22.5 Dayton pusher tires, 11R22.5 Dayton rear tires, triaxle.



2004 MACK VN:1M2P267C43M065194 Mack 350 diesel engine, 8LL transmission, power steering, dump body, central hydraulics, tailgate salter, plow frame, tandem axle, 147,000 miles.



2000 MACK VN:1M2K195C21M016820 Mack 350 diesel engine, automatic transmission, power steering, dump body, salt spreader w/ wet system, plow frame, tandem axle, 18,000 miles. Meets NJ state slating requirements.



MACK VN:VG6BA09B1YB702219 Renault diesel engine, automatic transmission, power steering, dump body, dual wheel single axle.

2012 INTERNATIONAL VN:678623 diesel engine, 6 speed transmission, power steering, a/c, am/fm radio, 10ft. Dump body, aluminum wheels, dual wheel single axle, 132,000 miles.

2010 INTERNATIONAL 7500 VN:N/A diesel engine, Allison automatic transmission, power steering, 10 1/2ft. Stainless steel dump body, double acting hoist, central hydraulic, stainless steel tailgate, snow plow hitch, dual wheel single axle. Reconstructed title.

2005 INTERNATIONAL 4200 VN:105805 diesel engine, 6 speed transmission, power steering, a/c, am/fm radio, 10ft. Dump body, dual wheel single axle, 210,000 miles.

2010 KENWORTH T600 VN:270201 Cummins diesel engine, 260hp, 6 speed transmission, power steering, a/c, am/fm radio, 12ft. Dump body, aluminum wheels, tandem axle.



1994 KENWORTH T800 VN:N/A Cat 3406E diesel engine, 550hp, Eaton 18 speed transmission, power steering, 18ft. Ti-brook aluminum dump body, tailgate chute, auto tarp, Eaton 46,000lb rears on Hendrickson walking beam suspension, air lift third axle, triaxle.



2005 STERLING LT9500 VN:N/A Mercedes Benz OM diesel engine, 460hp, Eaton 8LL transmission, power steering, J & J 18ft. Aluminum dump body, auto tarp, 18,300lb fronts, 20,000lb pusher axle, 46,000lb Eaton rears on air liner suspension, air lift third axle, triaxle.



2007 FORD F550 Super Duty diesel engine, automatic transmission, backup camera, power steering, 11ft.

Mason dump body, dual wheel single axle, 123,246 miles.

(3) 2015 FORD F450 4x4, V8 gas engine, automatic transmission, power steering, a/c, landscape dump body, 9ft. Fisher plow, dual wheel single axle, 50,000 miles.

2005 CHEVY 8500 VN:906634 diesel engine, 9 speed high/low transmission, power steering, a/c, am/fm radio, 12ft. Dump body, aluminum wheels, tandem axle, 132,000 miles.

8 TRUCK TRACTORS

2016 MACK CXU613 VN:M054868 Mack MP8 diesel engine, 445hp, M-drive transmission, a/c, engine brake, power steering, 93 & 72 gallon aluminum fuel tank, 180in. Wheelbase, 3.08 ratio, 295/75 tires, tandem axle.

2001 MACK TRT VN:1M1AA18Y01W142610 Mack E7 diesel engine, 427hp, Eaton 10 speed transmission, power steering, 46,000lb rears, tandem axle.

1996 MACK RS688 VN:1M2P267C7TM026390 Mack E7 diesel engine, 350hp, 8LL transmission, power steering, 20,000lb fronts, 46,000lb rears, tandem axle.

1988 MACK R690ST VN:1M2N277Y9JW006572 (2016) ReMack diesel engine, 350hp, 6 speed low hold transmission, power steering, 64,000lb rears, tandem axle.



2007 STERLING ACTERRA VN:2FWJA3CV37AX36505 Mercedes Benz diesel engine, power steering, air suspension, tandem axle.



2006 STERLING 9500 VN:2FWJA3CV76AU95496 Mercedes Benz OM460 diesel engine, power steering, air suspension, tandem axle.



2006 STERLING 9500 VN:2FWJA3CV76AU95501 Mercedes Benz OM460 diesel engine, power steering, air suspension, tandem axle.



INTERNATIONAL 9300 Cummins N14 diesel engine, 450hp, Eaton 8LL transmission, power steering, wet line, 46,000lb rears on Hendrickson walking beam suspension, double frame, tandem axle.

9 VAN TRUCKS

2013 HINO 268 SN:300 diesel engine, automatic transmission, power steering, 26ft. Van body, dual wheel single axle.

2008 HINO 268 SN:67 diesel engine, automatic transmission, power steering, 26ft. Van body, dual wheel single axle.

2006 HINO 268 SN:186 diesel engine, automatic transmission, power steering, 26ft. Van body, dual wheel single axle.

2006 HINO 238 SN:322 diesel engine, automatic transmission, power steering, 26ft. Van body, dual wheel single axle.

2010 HINO 185 SN:90 diesel engine, automatic transmission, power steering, 26ft. Van body, dual wheel single axle.

2007 MITSUBISHI FUSO SN:225 diesel engine, automatic transmission, power steering, 26ft. Van body, dual wheel single axle.

2006 MITSUBISHI FUSO VN:JL6BBH1SX6K001873 diesel engine, automatic transmission, power steering, 26ft. Van body, dual wheel single axle.

2006 MITSUBISHI FUSO SN:277 diesel engine, automatic transmission, power steering, 26ft. Van body, dual wheel single axle.

2005 GMC C6C VN:1GDDJ6C1C85F505362 diesel engine, automatic transmission, power steering, 26ft. Van body, dual wheel single axle.

STAKE TRUCKS



2004 FORD F450 VN:A78456 power steering, stake rack dump body, dual wheel single axle.



2002 FORD F350 V8 gas engine, automatic transmission, power steering, 12ft. Rack body, liftgate, dual wheel single axle.

3 SNOW PLOW TRUCKS



INTERNATIONAL NAVISTAR VN:N/A DT466 diesel engine, power steering, Side Discharge Salt body, dual wheel single axle.



1996 GMC TOPKICK VN:1GDM7H1J9TJ502051 Cat 3126 diesel engine, power steering, 10ft. Snow Plow, air brakes, dual wheel single axle, 87,000 miles.



1992 CHEVY KODIAK VN:1GBM7H1J0N102875 Cat 3126 diesel engine, 5 speed transmission, power steering, 6 yard Economizer stainless salt spreader, air brakes, 10 snow plow, dual wheel single axle. (Spreader needs motor)

VACUUM TRUCK



STERLING V316 VN:6753 Cat C12 diesel engine, 8 speed transmission, power steering, Vaccon vacuum body(Cummins powered), 44,000lb rears, tandem axle, 114,000 miles.

10 ROLLOFF TRUCKS



2009 KENWORTH T800 VN:J236367 Cat C13 Turbo diesel engine, 430hp, Eaton 8 speed transmission, power steering, AM/FM Radio, A/C, Galbreath U75-OR-174 Roll Off, 37.5 Ton Capacity, 23ft. Roll Off Bed, air brakes, 72,000 GVWR, tandem axle.



2007 MACK CV713 GRANITE VN:M064385 Mack AI-350 Turbo diesel engine, 350hp, Eaton 8 speed transmission, power steering, AM/FM Radio, A/C, Galbreath REV60-16-24 Roll Off, 30 Ton Capacity, 24ft. Roll Off Bed, Air Brakes, trailer air, 77,200 GVWR, tandem axle w/ drop triaxle.



2005 MACK CV713 GRANITE VN:M023298 Mack AI-350 Turbo diesel engine, 350hp, Eaton 8 speed transmission, power steering, AM/FM Radio, A/C, Galbreath REV60-16-25 Roll Off, 30 Ton Capacity, 25ft. Roll Off Bed, air brakes, 76,140 GVWR, tandem axle w/ drop triaxle.



2004 MACK CV713 GRANITE VN:M009804 Mack AI-400 Turbo diesel engine, 400hp, Eaton 8 speed transmission, power steering, AM/FM Radio, A/C, BME Engineering P-75-OR-176-RP Roll Off, 37.5 Ton Capacity, 23ft. 6in. Roll Off Bed, air brakes, 62,100 GVWR, tandem axle.



MACK GRANITE VN:7993 Mack diesel engine, 400hp, Allison 4500 transmission, power steering, American 75,000lb roll off body, 58,000lb Mack rears, triaxle.



2003 MACK RD688SX VN:M065495 Mack E7-350 Turbo diesel engine, 350hp, Eaton 8 speed transmission, power steering, AM/FM Radio, A/C, G&H 1560 Roll Off, 30 Ton Capacity, 25ft. Roll Off Bed, air brakes, Trailer Air, tandem axle w/ drop triaxle.



2003 MACK RD688SX VN:M066176 Mack E7-350 Turbo diesel engine, 350hp, Allison automatic transmission, power steering, AM/FM Radio, A/C, G&H 1560 Roll Off, 30 Ton Capacity, 23ft. Roll Off Bed air brakes, trailer air, tandem axle.

2001 MACK RD690S VN:57226 Mack diesel engine, 400hp, Eaton 8LL transmission, power steering, McClain 60,000lb hoist, Pioneer coverall automatic tarper, 46,000lb rears, Mack camelback suspension, tandem axle.



2004 FREIGHTLINER FL-112 VN:M09351 Mercedes OM460-1A-CID781 Turbo diesel engine, 350hp, Eaton 8 speed transmission, AM/FM Radio, A/C, power steering, G&H 1560 Roll Off, 30 Ton Capacity, 23ft. Roll Off Bed, Air Brakes, 66,000 GVWR, tandem axle.



INTERNATIONAL 7600 VN:N/A Cummins M11 diesel engine, 8 speed transmission, power steering, Galbreath 60,000lb roll off body, 44,000lb rears, triaxle.

3 ROLLOFF TRUCKS

2004 PETERBILT 285 VN:1NPGU0X35N879443 diesel engine, power steering, Vulcan 28ft. Wood deck, air lift third axle, triaxle.



1997 FORD F800 VN:FDNF80C5VVA07416 Cat 3126 diesel engine, power steering, Jer-dan rollback body, dual wheel single axle, 198,000 miles.



1995 FORD F750 V8 gas engine, automatic transmission, power steering, 22ft. Jer-dan rollback body, winch, air brakes, 28,000 GVW, dual wheel single axle, 103,044 miles

FUEL/LUBE TRUCKS



2005 PETERBILT 330 VN:2NPNLZ0X85M837192 Cummins diesel engine, Eaton Fuller transmission, power steering, Off Road Fuel Tank, On Road Fuel Tank, Oil, Hydraulic, Antifreeze, Grease Reels, On Board Air Compressor, dual wheel single axle, 252,000 miles.



1984 KENWORTH VN:2NKWL29XDEM320182 diesel engine, power steering, 1,000 Gallon Fuel Tank, On Board Air Compressor, Oil, Waste Oil, Hydraulic, Antifreeze, Grease Reels, tandem axle, 292,000 miles.

5 SERVICE TRUCKS

2012 DODGE 5500 VN:3C7WDNBL8CG213428 4 x 4, Cummins 5.9L diesel engine, 6 Speed Automatic transmission, power steering, Cruise, Tilt, AM-FM, power brakes, Rear Camera, Reading Model MM378, Heavy-Duty Crane 14' body, 60" Tall Cabinets, Slide out tool draws, Honda Powered Air Compressor w/ electric start with reel, LED lit Cabinets, LubeMate/Graco Lube System 50' reels with Oil (2), Grease and Waste Recovery, LED Work Lights, Front & Rear Service Truck 12v Jumper Setup, Oxygen/ Acetylene Tank ready compartment, Class V Hitch w/ Electric Brake Controller, HD Rear Bumper w/Vise, dual wheel single axle.



FREIGHTLINER VN:VNF30351 diesel engine, power steering, service body, crane, dual wheel single axle.



2000 FORD F750 VN:3FDXW75HXMYA70776 Cat 3126 diesel engine, Allison automatic transmission, power steering, crew cab, enclosed utility body, On Board Air Compressor, air brakes, dual wheel single axle. Former Utility Company Owned.



FORD F650 VN:3FDNF65B03MB07774 Cummins 5.9 diesel engine, power steering, service body, crane, fuel, oil, hydraulic, and antifreeze tanks, dual wheel single axle.



2005 FORD F550 VN:1FDAF57P25EC56648 6.0 diesel engine, automatic transmission, power steering, service body, crane, dual wheel single axle, 240,000 miles.

3 UTILITY TRUCKS



2005 GMC 2500 VN:1GDHK23U55F925039 power steering, utility body.



2004 GMC 2500 VN:1GDHK23U64F210883 4x4, gas engine, utility body.

2005 FORD F450 VN:1FDXF46P25EA45603 4x4, Power stroke diesel engine, power steering, PTO, utility body, hydraulic reservoir w/ hose connections, tool box, emergency light package, dual wheel single axle, 90,000 miles.

3 CAB & CHASSIS

2010 FORD F550 VN:N/A 4x4, 6.4L diesel engine, automatic transmission, power steering, dual wheel single axle.

2008 FORD F550 VN:1FDAW56R88EB07989 6.4L diesel engine, automatic transmission, power steering, 4-door, dual wheel single axle.

1999 FREIGHTLINER FL60 VN:1FV3GJAC3XHA10807 Cat diesel engine, 240hp, 6 speed transmission, power steering, 252in. Wheelbase, 25,500 GVWR, dual wheel single axle, 238,000 miles.

4 PICKUP TRUCKS

2015 NISSAN FRONTIER SN:1N6AD0EV3FN753916 4x4, diesel engine, automatic transmission, power steering.



2009 CHEVY COLORADO VN:1GCCS19E998148920 Does not Run.



2006 GMC K2500 VN:1GTHK29U46E275963 4x4, V8 gas engine, automatic transmission, power steering, extended cab, 8ft. Bed.



1991 FORD F150 VN:1FTDF15Y7MNA67658 gas engine, 8ft. Bed, 189,302 miles.

DETACHABLE GOOSENECK TRAILERS

(2) 2021 LIDDELL C55 55 ton capacity non-ground bearing, 26ft. Well, Apitong deck, polished aluminum wheels, 255/70R22.5 tires, rear strobe light package, air lift third axle, triaxle. FET APPLIES.

7 TAGALONG TRAILERS

(4) NEW 2021 DELTA 20FT. VN:N/A 20ft. X 7ft. Tilt deck, 14,000lb GVWR, electric brakes, Bulldog 10,000lb jack, adjustable hitch, chain storage, LED lights, tandem axle.



2018 HOME MADE 7 TON VN:HMDCP2018123



2017 HOME MADE 7 TON VN:HMDCP2018122



1999 EAGER BEAVER 7 TON VN:112ACH203YL054378

DUMP TRAILERS

(2) NEW 2021 DELTA 14FT. VN:N/A 14ft x 7ft. Dump body, (2) 7,000lb axles, electric brakes, wired remote, wireless remote, locking chain storage, slid in loading ramps, barn style or swing rear gate, D-rings, LED lights, adjustable coupler, 235/80R16 tires, tandem axle

SIDE DUMP TRAILERS

2001 SMITH CO VN:1S9SS40241L476898 tandem axle.
2001 SMITH CO VN:1S9SS40261L476899 tandem axle.

DEMOLITION TRAILERS

2008 TRAILSTAR VN:1T9DS34B781066621 tandem axle.
2008 TRAILSTAR VN:1T9DS34B181066654 tandem axle.

5 FLATBED TRAILERS

2003 FONTAINE VN:13N1484083159096 flatbed body, triaxle.

1990 FONTAINE FTW-4-8045

VN:13N1452C1L1550315 45ft. Flatbed body, sliding tandem axle.

1999 FRUEHAUF VN:1JJF482F6XS561520 tandem axle.

1988 GREAT DANE VN:21FRDM9626JM050601 tandem axle.

1982 DUN VN:1DNX402S4CM013735 tandem axle.

5 FLOW BOY TRAILERS

1999 RED RIVER LB237 VN:1000332 42ft. Live bottom, tandem axle.

1999 RED RIVER LB237 VN:1000321 42ft. Live bottom, tandem axle.

1999 RED RIVER LB237 VN:1000320 42ft. Live bottom, tandem axle.

1999 RED RIVER LB237 VN:1000319 42ft. Live bottom, tandem axle.

1996 RED RIVER OLB336 VN:1051169 40ft. 7in. Live bottom, tandem axle.

38 MULTI-TEMP REFRIGERATOR TRAILERS

(32) 2014 GREAT DANE 48ft. Refer body, Thermo King 3-temp refer unit, tandem axle.

(4) 2015 GREAT DANE 48ft. Refer body, Thermo King 3-temp refer unit, tandem axle.

(2) 2016 GREAT DANE 48ft. Refer body, Thermo King 3-temp refer unit, tandem axle.

CARGO TRAILER

PACE CS816TA2 VN:40LAB1627YP061775 16ft. Cargo body, ramp door, side door, 7,000 GVWR, tandem axle.

4 RECREATIONAL VEHICLES

(1) 125CC ATV

(1) 125CC DIRT BIKE

(1) 70CC DIRT BIKE

(1) 110 CC ATV

6 STORAGE BUILDINGS

NEW GOLDEN MOUNT 30FT. X 65FT. X 15FT. Snow Rating Test Report;SGS fabric Certificate, Dome roof frame , snow rating:180kg.

NEW GOLDEN MOUNT 30FT. X 40FT. X 15FT. Snow Rating Test Report;SGS fabric Certificate, Dome roof frame , snow rating:180kg.

(2) NEW GOLDEN MOUNT 20FT. X 30FT. X 12FT. Snow Rating Test Report;SGS fabric Certificate, Peak roof frame , snow rating:200kg.

NEW GOLDEN MOUNT 40FT. X 20FT. Snow Rating Test Report;SGS fabric Certificate, PE fabric galvanized tube ,UV-resistance & fire- retardant.

NEW GOLDEN MOUNT 20FT. X 20FT. Snow Rating Test Report;SGS fabric Certificate, PE fabric galvanized tube ,UV-resistance & fire- retardant.

3 PORTABLE BATHROOM STATIONS

NEW BASTONE 110V PORTABLE TOILET W/ DOUBLE STALL

NEW BASTONE 110V PORTABLE TOILETS W/ SHOWER

NEW BASTONE 110V PORTABLE TOILET W/ SINGLE STALL

16 SNOW EQUIPMENT

(10) NEW 96IN. SNOW PUSHER



(4) WARREN 2 YARD SALT SPREADER used only one season.

HENDERSON SALT SPREADER



WESTERN 8 1/2FT. SNOW PLOW

6 SCRAP RECYCLING EQUIPMENT

NEW 2 CUBIC YARD SELF DUMPING HOPPER

(2) NEW 1.75 CUBIC YARD SELF DUMPING HOPPER

NEW 1.75 YARD HD TRASH HOPPER

(2) NEW GREATBEAR 1 YARD SELF DUMPING HOPPER

VACUUM TRUCK TANKS

(2) NEW CURRY 110 BARREL/ 4,600 GALLON

FLATBED BODY



8FT. X 14FT. LUMBER FLATBED

TRUCK PARTS & ACCESSORIES

IMT 9000 KNUCKLE BOOM

PLATE HOOK STEPS FOR DUMP TRUCK

TRAILER PARTS & ACCESSORIES



TALBERT GOOSENECK & FLIP DOWN AXLE VN:N/A refurbished.

14 TIRES, NEW & USED

(2) GOODYEAR 445/65R22.5 TIRES

(2) (4) MICHELIN 235/80R22.5 TIRES



(4) (4) TRAILER TIRES

- (2) LOADER FRONT TIRES
- (2) DUNLOP 11/24 TIRES W/ ALUMINUM RIMS
- (2) (4) 23.5 X 25 TIRES
- (3) (4) 12-16.5 SETCO SOLID TIRES fits Bobcat S750.

4 TIRES AND TRACKS



- (4) 600MM STEEL TRACKS TIRES AND TRACKS fits mid size excavators such as Link Belt 145 and 160 94 Link Track Chain, 600 MM 3 Bar Grousers.

FUEL TANKS



- 10,000 GALLON Self Containment Area, Double Wall Tank, Fill Rite Pump.

1000 GALLON DOUBLE LINED

16 PALLETS OF STONES

- (16) NEW PALLET OF STONES

16 FIRE WOOD

- (16) NEW PALLET OF SPLIT OAK FIREWOOD

3 HEATING EQUIPMENT

MI-T-M MH-0375-LM10 350K BTU HEATER
SN:HGFM0900419

MI-T-M MH-0150-LMT0 350K BTU HEATER
SN:HGFM0902230

REZNOR 300K. BTU WASTE OIL HEATER

17 PRESSURE WASHERS



- (4) NEW EASY KLEEN MAGNUM GOLD gas engine, 4000PSI, 12Volt, 15hp, Hot Water, totally self contained.
- (3) EASY KLEEN MAGNUM 4000 SERIES
- (2) NEW GREATBEAR 4000PSI HOT WATER w/tank.



- (4) NEW LIFAN LFQ3370 RECOIL 3300PSI 7hp Recoil start EPA gas engine, 25ft. PVC high pressure hose, 16in. Gun and lance w/ adjustable spray wand, hose hanger & wand brackets for EZ storage.



- (4) NEW LIFAN LFQ3300 STORM 3300 PSI OEM gas engine, 2.5 GPM.

200 NEW SUPPORT EQUIPMENT



- (3) NEW STANLEY ST3TWPLT 3IN. TRASH PUMP
Lifan gas engine, 13hp, 4 gallon fuel tank, 6 hour run time, includes locking handles and wheel kit.



- (3) NEW STANLEY ST2WP-LT 2IN. TRASH PUMP
Lifan gas engine, 7hp, removable T-bar connection, front pump cover for easy clean out.

- (3) NEW MUSTANG LF88 PLATE COMPACTOR
- (4) NEW MUSTANG MP4800 2IN. SUB PUMP
- (2) NEW MUSTANG CV3500 CONCRETE VIBRATOR
- (2) NEW HUSKIE B65 ELECTRIC DEMO HAMMER
- (2) NEW HUSKIE 11218SDS HAMMER DRILLS
- (8) NEW 3 PC. 14IN. PREMIUM DIAMOND BLADES
- (8) NEW 25FT., 800AMP EXTRA HD BOOSTER CABLE
- (6) NEW 2IN. X 50FT. DISCHARGE WATER HOSE
- (4) NEW AUTO DARKENING WELDING HELMET
- (3) NEW 1/2IN. DRIVE AIR IMPACT WRENCH KIT
- NEW 12V DIESEL FUEL PUMP
- (2) NEW 6PK. 14IN. ABRASIVE BLADES
- NEW GREASE GUN
- (4) NEW 30IN. X 57IN. WELDING TABLE W/SHELF
- (2) NEW 29.5IN. X 90IN. HEAVY DUTY WORK BENCH W/ SHELF
- (2) NEW 3/8IN. AR500 DUELING TREE SHOOTING TARGET
- (4) NEW 3/8IN. AR500 GONG TARGET
- (2) NEW 1/2 AR500 STEEL COYOTE SHOOTING TARGET
- NEW STEELMAN 10FT. WORKBENCH W/ 25-DRAWERS
- NEW STEELMAN 7FT. WORKBENCH W/ 20-DRAWERS
- (2) NEW STEELMAN 7FT. WORKBENCH W/ 18-DRAWERS
- (4) NEW GREATBEAR 20FT. BI-PARTING WROUGHT IRON GATE
- NEW GREATBEAR 14FT. BI-PARTING WROUGHT IRON GATE

- (2) NEW GREATBEAR 16PC 2IN. X 27IN. RATCHET & 8PC 1.5IN. X 27IN. RATCHET
- (10) NEW (25) SAFETY HIGHWAY CONES
- (2) 20 TON HYDRAULIC BOTTLE JACK
- (2) GOODYEAR 3/8" X 50' AUTOMATIC AIR HOSE REEL
- (2) TIRE MOUNT- DISMOUNT TOOL
- (2) GOODYEAR PROFESSIONAL CORD REEL
- (1) FUEL BOSS 12 VOLT TRANSFER FUEL PUMP 15 GPM
- (2) 30 GAL X-FORCE AIR COMPRESSOR - MADE IN USA
- (1) TROYBILT FLEX POWERHEAD W/ three ATTACHMENTS
- (2) 6 HP 60 GAL X-FORCE AIR COMPRESSOR- 1 YR FACTORY WARRANTY
- (1) WINCH- BULLDOG 12000 LB CAPACITY ELEC UTILITY WINCH
- (1) WELDER - HOT MAX TORCHES 300/200 AMP AC/DC ARC WELDER
- (1) 3/4" 12 VOLT FUEL HOSE REEL & PUMP
- (1) 25 GAL FUEL TRANSFER TANK & PUMP COMBO
- (1) 30 GAL TRUCK MOUNT ELEC START 22 CFM IRON HORSE AIR COMPRESSOR- 1 YR FACTORY WARRANTY
- (2) ARMOR 24 GUN FIRE SAFE ELECTRONIC LOCK FIRE RATED
- (2) 208 CC GENERAL PURPOSE ENGINE- ELEC START
- (2) 1" IMPACT WRENCH w/ BLOW CASE & 2 IMPACT SOCKETS 1900 FT TORQUE
- (2) 1 GA 25 FT HEAVY DUTY BOOSTER CABLE
- (2) 5 GAL TIRE BLASTER
- (1) 1" 110 VOLT FUEL HOSE REEL & PUMP
- (1) 1" 12 VOLT FUEL HOSE REEL & PUMP
- (1) ARMOR 64 GUN FIRE SAFE ELECTRONIC LOCK FIRE RATED
- (1) 7 HP 80 GAL X FORCE AIR COMPRESSOR
- (1) HONDA 30 GAL TRUCK MOUNT AIR COMPRESSOR - EAGLE 9G30TRKE-H
- (2) HONDA 5.5 HP 10 GAL CONTRACTOR AIR COMPRESSOR- 1 YR FACTORY WARRANTY
- (1) CHEVRON 55 GALLON EQUIPMENT LUBRICANT
- (2) DEWALT 3800 PSI PRESSURE WASHER HONDA ENGINE
- (2) MAKITA RECIPROCATING SAW - JR3050T- 1 YR FACTORY WARRANTY
- (2) MAKITA ROOFING COIL PNEUMATIC NAILER- AN453-1 YR FACTORY WARRANTY
- (2) MAKITA SDS ROTARY HAMMER, IMPACT DRILL- HR2621- 1 YR FACTORY WARRANTY
- (2) MAKITA 4 1/2" ANGLE GRINDER W/ AC/ DC SWITCH - 9557NB- 1 YR FACTORY WARRANTY
- (2) MAKITA 7 1/4 " HYPOID SAW 5477NB- 1 YR FACTORY WARRANTY
- (2) MAKITA 35 LB DEMOLITION HAMMER - HM 1307CB- 1 YR FACTORY WARRANTY
- (2) MAKITA 3 1/2" FRAMING NAILER- AN923- 1 YR FACTORY WARRANTY
- (2) 7" Angle Grinder, with AC/DC Switch (RECON)- GA7021 - 1 YR FACTORY WARRANTY
- (2) 12" Dual-Bevel Sliding Compound Miter Saw with Laser (RECON)- LS1219L- 1 YR FACTORY WARRANTY
- (2) 18 V LXT HEDGE TRIMMER , Tool Only (RECON)- XHU02Z- 1 YR FACTORY WARRANTY
- (2) 18V LXT® Recipro Saw, Tool Only (RECON)- XRJ05Z- 1 YR FACTORY WARRANTY
- (2) MAKITA 2 SPEED HAMMER DRILL- HP2050- 1 YR FACTORY WARRANTY
- (2) MAKITA 3 HP AIR COMPRESSOR - MAC5200- 1 YR FACTORY WARRANTY
- (2) MAKITA HAND PLANER - KP0800K- 1 YR FACTORY WARRANTY

(2) 18V LXT® Lithium-Ion Sub-Compact Brushless Cordless 2-Pc. Combo Kit (2.0Ah) Impact Driver / Driver Drill (RECON)- CX200RB - 1 YR FACTORY WARRANTY
 (2) MAKITA TOP HANDLE JIG SAW W/ CASE - JV0600K- 1 YR FACTORY WARRANTY
 (2) 36 VOLT LXT® Lithium-Ion Brushless Cordless Blower, Tool Only (RECON) - XBU02Z- 1 YR FACTORY WARRANTY
 (2) MAKITA 18 V X 2 (36 V) SLIDE MITER SAW - XSL02Z- 1 YR FACTORY WARRANTY
 (2) MAKITA- 18 V LXT 6.5 " CIRCULAR SAW - XSS02Z- 1 YR FACTORY WARRANTY
 (2) MAKITA 18 VOLT 23 GAUGE PIN NAILER - XTP02Z- 1 YR FACTORY WARRANTY
 (2) MAKITA 20 LB DEMOLITION HAMMER , ACCEPTS SDS-MAX BITS (RECON) - HM1203C- 1YR FACTORY WARRANTY
 (2) MAKITA 1 9/16" ROTARY HAMMER - HR4013C - 1 YR FACTORY WARRANTY
 (2) MAKITA 18 V LXT BL 2 PC COMBO KIT XT268- HAMMER-DRIVER DRILL - / IMPACT DRIVER -1 YR FACTORY WARRANTY
 (2) MAKITA CORDLESS JOB SITE SPEAKER - XRM08- 1 YR FACTORY WARRANTY
 (2) MAKITA 18-Volt LXT Lithium-Ion Brushless Cordless 1/2 in. DRIVER -DRILL KIT, 3.0Ah- XFD131- 1 YR FACTORY WARRANTY
 (1) MAKITA 75.6 CC MM4 MIST VLOWER - PM7650H- 1 YR FACTORY WARRANTY

28 SUPPORT EQUIPMENT

PALLET OF STAINLESS STEEL TAPPING SLEEVES
 CASE (25) OF POSSEWARE THROW AWAY COVERALLS
 17IN. FLOOR BUFFER
 27IN. X 18IN. X 41IN. ROLLING TOOL BOX



CORE CUT CC3500 WALK BEHIND SAW Wisconsin gas engine, 14-48in. Capacity.

CRAFTSMAN 8-DRAWER TOOLBOX

CRAFTSMAN 10IN. TABLE SAW

FLOOR MOUNTED TIRE CHANGER

2013 MULTIQUIP MVC88VGHW PLATE COMPACTOR
 SN:Y1565

2014 MULTIQUIP MVC88VGHW PLATE COMPACTOR
 SN:T2Y1487

PALLET OF MISC HAND TOOLS



(4) PALLET RACKING



QUINCY AIR COMPRESSOR SN:83196

(6) STACKABLE RACKS
STIHL CHAINSAW



TARGET PRO65 II WALKBEHIND Wisconsin gas engine, 14-48in. Capacity.



WERNER 24/20
FLOOR AUTO JACK
(9) PROPANE TANKS
HEAVY DUTY SHELVEING

DAY 2 FRIDAY, APRIL 9TH

Motor Graders, Motor Scrapers, Articulated Trucks, Concrete Pump Trucks, Majority of Hydraulic Excavators & Rubber Tired Excavators, Truck Mounted Excavators, Hydraulic Excavator Crushers, Sticks, Hammers, Grapples, Thumbs, Buckets & Misc. Attachments, Truck Cranes, Crawler Cranes, Rough Terrain Cranes, Carry Deck Cranes, Pile Drivers, Crane Attachments, Aggregate Equipment, Concrete Batch Plants, Concrete Forms, Concrete Equipment, Scaffolding, Boom Trucks, Fuel/Lube Trucks, Water Trucks, Logging & Forestry Equipment, Crawler Dumps, Chippers & Stump Grinders, Cable Plows, Rock Saws, Trenchers, 1/2 Generators, Trench Boxes, Horizontal Boring Machines, 1/2 Water Pumps, Drilling Equipment, 1/2 Light Plants/Arrow Boards, Pressure Washers, Sweeper/Vacuum Trucks, Sewer Jetters, Rubber Tracked Dumps, 1/3 Recreational Vehicles, Several Detachable Trailers, Tagalong Trailers, Decorative Stones, Support-Office & Survey Equipment, 1/3 Skid Steer Attachments, Pallets of Stone, Large Quantity of Support Equipment.

6 ARTICULATED HAUL TRUCKS

2018 BELL B30E SN:2008033 6x6, Mercedes diesel engine, Cab, air, heat, rearview camera, 30 ton capacity, 23.5R25 rubber.

2018 BELL B30E SN:2008024 6x6, Mercedes diesel engine, Cab, air, heat, rearview camera, 30 ton capacity, 23.5R25 rubber.



TEREX TA30 SN:A7991471 6x6, 6 cylinder diesel engine, Cab, 30 ton capacity, 23.5R25 rubber.

TEREX TA30 SN:A7991566 6x6, 6 cylinder diesel engine, Cab, 30 ton capacity, 23.5R25 rubber.



VOLVO A40D SN:A40DV12351 6x6, diesel engine, EROPS, air, heat, retarder, 40 ton capacity, tailgate.



VOLVO A40D SN:A40DV12156 6x6, diesel engine, EROPS, air, heat, retarder, 40 ton capacity, tailgate.

42 HYDRAULIC EXCAVATORS



CAT 330CL SN:CAP01408 Cat diesel engine, Cab, reach boom, 54in. digging bucket, long undercarriage.

2013 CAT 329EL SN:PLW01139 Cat diesel engine, Cab, air, reach boom, 10ft. 6in. Stick, auxiliary hydraulics, Cat hydraulic quick coupler, 32in. TBG pads, Cat 36in. digging bucket w/ thumb bracket, long undercarriage.



(2) 2020 CAT 320 Cat diesel engine, Cab, air, next generation, Cat grade w/ advanced 2D, 360 degree visibility, 9ft. 6in. stick, combination auxiliary hydraulics, boom & stick lowering check valves, 28in. pads, hydraulic quick coupler, New 54in. digging bucket, long undercarriage.

2018 CAT 320 SN:HEX01612 Cat diesel engine, Cab, air, NXT generation, tool control hydraulics, pin grabber coupler, digging bucket, 1,526 hours.



2012 CAT 316EL SN:DZW00575 diesel engine, Cab, air, rearview camera, reach boom, 10ft. 2in. Stick, auxiliary hydraulics, 28in. TBG pads, Cat hydraulic quick coupler, Cat 48in. digging bucket w/ thumb bracket, long undercarriage.

2021 CAT 315FL CR SN:TDY14280 Cat diesel engine, Cab, air, heat, combination hydraulics, 24in. pads, hydraulic coupler, digging bucket, long undercarriage.

2021 CAT 315FL CR SN:TDY14287 Cat diesel engine, Cab, air, heat, combination hydraulics, 24in. pads, hydraulic coupler, digging bucket, long undercarriage.

2017 CAT 315FL SN:TDY10347 Cat diesel engine, Cab, air, heat, front blade, tool control, pin grabber coupler, digging bucket, long undercarriage, 2,160 hours.

2017 CAT 315FL SN:TDY10750 Cat diesel engine, Cab, air, heat, front blade, tool control, pin grabber coupler, digging bucket, long undercarriage, 3,024 hours.



2013 CAT 314E LCR SN:ZJT00412 Cat diesel engine, Cab, air, pattern control changer, rearview camera, 8ft. 6in. blade w/ BOCE, reach boom, 9ft. 10in. stick, auxiliary hydraulics, hydraulic quick coupler, 24in. TBG, Cat 36in. digging bucket with teeth, long undercarriage.

2017 CAT 313FL SN:PRG00228 Cat diesel engine, Cab, air, rear camera, combination auxiliary hydraulics, boom & stick lowering check valves, 24in. pads, Cat hydraulic quick coupler, new 42in digging bucket w/ hydraulic thumb, long undercarriage.

2016 CAT 313FL GC SN:GJD00499 Cat diesel engine, Cab, air, rear camera, auxiliary hydraulics, boom & stick lowering check valves, 28in. pads, hydraulic quick coupler, 36in. digging bucket w/ hydraulic thumb, long undercarriage.

2015 CAT 312EL SN:PZL00524 Cat diesel engine, Cab, air, rear camera, control valve, auxiliary hydraulics, 24in. Pads, hydraulic quick coupler, digging bucket w/ hydraulic thumb, long undercarriage.



2015 CAT 312EL SN:WEY00347 Cat diesel engine, Cab, air, rear camera, control valve, auxiliary hydraulics, 24in. Pads, hydraulic quick coupler, digging bucket w/ hydraulic thumb, long undercarriage.

CAT 245BME SN:6MF0099 Cat diesel engine, Cab, digging bucket.

CAT 245B SN:6MF00226 Cat diesel engine, Cab, 78in. clean out bucket.

CAT 235C SN:5AF00804 Cat diesel engine, Cab, 40in. digging bucket.

CAT 235 Cat diesel engine, Cab, 42in. Digging bucket, 3,333 hours. Selling Offsite Located: 3021 State Rt 178 Cohection NY 12726.

2013 KOBELCO SK210LC-9 SN:YQ13U5536 diesel engine, Cab, air, heat, digging bucket, long undercarriage.

2013 KOBELCO SK210LC SN:YQ13U5559 diesel engine, Cab, air, heat, hydraulic quick coupler, digging bucket, long undercarriage.

2013 KOBELCO SK210C SN:YQ13U5632 diesel engine, Cab, air, heat, digging bucket, long undercarriage.



2012 KOMATSU PC240LC-10 SN:A20108 Komatsu diesel engine, Cab, air, 48in. Digging bucket, long undercarriage.

KOMATSU PC228USLC-3NO SN:31209 Komatsu diesel engine, Cab, air, quick coupler, 48in. digging bucket, long undercarriage.



KOMATSU PC220LC-8 SN:A88184 Komatsu diesel engine, Cab, air, 40in. Digging bucket w/ hydraulic thumb, long undercarriage.



KOMATSU PC220LC-7 SN:A86093 Komatsu diesel engine, Cab, air, 42in. Digging bucket, long undercarriage. Trench bucket Sells Separately.

2017 KOMATSU PC210LC-10 SN:K60869 Komatsu diesel engine, Cab, air, control valve, rear camera, auxiliary hydraulics, 28in. Pads, hydraulic quick coupler, New 48in. Digging bucket, long undercarriage.



2015 KOMATSU PC138US-8 SN:43457 Komatsu tier 4 diesel engine, Cab, air, rear camera, control valve, auxiliary hydraulics, 28in. Pads, hydraulic quick coupler, digging bucket w/ hydraulic thumb.

2012 KOMATSU PC138US-8 SN:28901 Komatsu tier 4 diesel engine, Cab, air, rear camera, control valve, auxiliary hydraulics, 28in. Pads, hydraulic quick coupler, digging bucket w/ hydraulic thumb.

2014 HITACHI ZX225USLC-5 SN:301102 diesel engine, Cab, air, rear camera, auxiliary hydraulics, 28in. Pads, New 48in. Digging bucket w/ hydraulic thumb, long undercarriage.

2019 HITACHI ZX210LC-6 diesel engine, Cab, air, 360 degree cameras, auxiliary hydraulics, 28in. Pads, hydraulic quick coupler, 48in. digging bucket w/ hydraulic thumb, long undercarriage.

2014 HITACHI ZX130LC-5N SN:130040 diesel engine, Cab, air, heat, 2-speed, 10ft. Stick, 24in. Pads, 36in. Digging bucket, long undercarriage.

2012 HITACHI ZX130LC-5N SN:930121 diesel engine, Cab, air, heat, auxiliary hydraulics, quick coupler, 42in. Digging bucket, long undercarriage.



HITACHI EX200LC-5 SN:AMD300456 Isuzu diesel engine, Cab, 31.5in. TBG pads, 42in. Digging bucket w/ mechanical thumb, long undercarriage.



2014 DOOSAN DX140LCR-3 SN:DHKCEBAXEE0001322 diesel engine, Cab, air, heat, reduced tail swing, digging bucket, long undercarriage.

2017 DOOSAN DX85 SN:H6001926 diesel engine, Cab, air, rear camera, push blade, 18in. Rubber tracks, Hydraulic quick coupler, 32in digging bucket w/ hydraulic thumb.

2005 JOHN DEERE 160CLC SN:45148 John Deere diesel engine, Cab, air, heat, 10ft. Stick, 48in. Digging bucket w/ thumb, long undercarriage.

2007 JOHN DEERE 35D SN:X237236 John Deere diesel engine, OROPS, front blade, auxiliary hydraulics, rubber tracks, quick coupler, 24in. digging bucket.



GRADALL XL5200 SN:529119 Cummins diesel engine, Cab, air, heat, 32in. Pads, 60in. Digging bucket.

2016 KUBOTA KX080-4 SN:H32393 Kubota diesel engine, Cab, air, front blade, off-set boom, control valve, auxiliary hydraulics, rubber tracks, hydraulic quick coupler, digging bucket w/ hydraulic thumb.

2014 BOBCAT E85 SN:34511952 diesel engine, Cab, air, heat, pattern changer, front blade, auxiliary hydraulics, plumbed for thumb, Roadliner pads, quick coupler, digging bucket. 3-Extra buckets Sell Separately.
2013 TAKEUCHI TB285 SN:185000675 diesel engine, Cab, air, heat, front blade, auxiliary hydraulics, rubber tracks, digging bucket.

CONCRETE PULVERIZERS

NEW BODINE CP300 To Fit Exc: 50-88,000 lbs. CAT & Komatsu 300, JD 240/270, Hitachi 270, Kobelco 250/290, Link Belt 240/290/330 and similar sized machines 90/90 mm Pins X 17" Space.
NEW BODINE CP250QC (Quick Coupler Compatible) To Fit Exc: 34-69,000 lbs. CAT 320/325, Komatsu PC 200/250 & similar sized machines and Quick Couplers 80/80mm Pins - 14.25" space.

4 MULTI SHEARS

NEW DAEMO DMP230CMS 3,704lb operating weight, 35.4in. Max width opening, 80.5in. Overall length, 55 ton crushing force, 577 ton max cutting force, 4,552 psi operating pressure, 52.8-66.1 oil flow rate, 18-26 ton excavator class.
NEW BODINE MS300 To Fit Exc: 50-88,000 lbs. CAT & Komatsu 300, JD 240/270, Hitachi 270, Kobelco 250/290, Link Belt 240/290/330 and similar sized machines 90/90mm Pins x 17" Space.
NEW BODINE MS250 To Fit Exc: 34-69,000 lbs. CAT 320/325, Komatsu PC 200/250 & similar sized machines 80/80mm Pins x 14.25" Space.
NEW BODINE MS200 To Fit Exc: 23-50,000 lbs. CAT 320/325, Komatsu PC 200/240 & similar sized machines 80/80mm Pins x 14.25" Space.

12 HYDRAULIC HAMMERS

NEW TROJAN 200CL 80mm pins fits to: Cat 320/321/323, Hyundai R210, Komatsu PC200/220, Deere 160/200/225, Kobelco SK210, Case 210/225, Doosan DX225.
NEW TROJAN 120CL 65mm pins fits to: Cat 311/312/313/314 Kobelco 140, Deere/Hitachi ZX120/135, Case 130/135, Doosan DX140.
(2) NEW TROJAN 80CL 65mm pins fits to: Cat 311/312/313/314 Kobelco 140, Deere/Hitachi ZX120/135, Case 130/135, Doosan DX140.
(2) NEW TROJAN 50CL 45mm pins fits to: Cat 305, 305.5 Komatsu PC45/50/55, Hyundai R55, Hitachi/Deere 50D/G, Case, New Holland, Kobelco SK50, Bobcat E50/341/337.
(2) NEW TROJAN 35CL 40mm pin fits to: Cat 303, 303.5, 304, Case, New Holland, Kobelco SK35, Deere/Hitachi 35D/G.
NEW DIESEL 120CL 65mm pins fits to: Cat 311/312/313/314 Kobelco 140, Deere/Hitachi ZX120/135, Case 130/135, Doosan DX140.
2015 ARROWHEAD R65S SN:R65061504
2014 ARROWHEAD R60 SN:S60121301



OKADA 308 SN:2502

40 EXCAVATOR THUMBS

NEW GENTEC MT2650 HD UNIVERSAL THUMB fits up to 50,000lb machines.
NEW GENTEC HT2650 HYDRAULIC UNIVERSAL THUMB fits up to 50,000lb machines.

NEW GENTEC HT830 HYDRAULIC THUMB fits 6-10,000lb machines.
NEW GENTEC HT824 HYDRAULIC THUMB fits 4-9,000lb machines.
NEW BODINE TH400 To Fit Exc: 88-125,000 lbs. CAT 345/350 & Komatsu 400 36" W x 65" L.
NEW BODINE TH300 To Fit Exc: 50-88,000 lbs. 30" W x 57" L.



(2) NEW BODINE TH250 To Fit Exc: 34-50,000 lbs. 24" H x 53" L.
(2) NEW BODINE TH200 To Fit Exc: 23-50,000 lbs. 24" W x 49" L.



(4) NEW BODINE TH180 To Fit Exc: 23-50,000 lbs. 9" W x 49" L.
NEW TERAN 30IN. MANUAL THUMB FOR CAT 320/325 AND 20 - 25 TON EXCAVATORS.
NEW TERAN 26IN. MANUAL THUMB FOR CAT 312/315 AND 12 - 15 TON EXCAVATORS.
(3) NEW TROJAN THUMB 80mm pins fits to: Cat 320/321/323, Hyundai R210, Komatsu PC200/220, Deere 160/200/225, Kobelco SK210, Case 210/225, Doosan DX225.
NEW TROJAN THUMB 90mm pins fits to: Cat 325/330/324, Hitachi 230/270, Hyundai R250LC-7, Komatsu PC300, PC360 Deere 240D/270D, Kobelco SK250/SK290/SK330/SK350, Case 240/290/330.
(3) NEW TROJAN THUMB 70mm pins fits to: Cat 315/316, Komatsu PC160/170, Hyundai 160, Kobelco 160.
(3) NEW TROJAN THUMB 65mm pins fits to: Cat 311/312/313/314 Kobelco 140, Deere/Hitachi ZX120/135, Case 130/135, Doosan DX140.
(3) NEW TROJAN THUMB 50mm pins fits to: Cat 307/308, Komatsu PC78/88, Deere/Hitachi 75/85, Case, New Holland, Kobelco SK80, Bobcat E80.
(3) NEW TROJAN THUMB 40mm pin fits to: Cat 303, 303.5, 304, Case, New Holland, Kobelco SK35, Deere/Hitachi 35D/G.
(3) NEW TROJAN THUMB 45mm pins fits to: Cat 305, 305.5 Komatsu PC45/50/55, Hyundai R55, Hitachi/Deere 50D/G, Case, New Holland, Kobelco SK50, Bobcat E50/341/337.
NEW DIESEL MECHANICAL THUMB 65mm pins fits to: Cat 311/312/313/314 Kobelco 140, Deere/Hitachi ZX120/135, Case 130/135, Doosan DX140.
NEW DIESEL MECHANICAL THUMB 50mm pins fits to: Cat 307/308, Komatsu PC78/88, Deere/Hitachi 75/85, Case, New Holland, Kobelco SK80, Bobcat E80.
(3) NEW ORIEL HYDRAULIC THUMB to fit 5 ton machines.

21 EXCAVATOR RIPPERS

NEW TERAN RIPPER FOR CAT 345D/349D AND 349D2, 349E, 349F, 352F - "TB" LINKAGE.

NEW TERAN RIPPER FOR CAT 336D AND 336D2, 336E, 336F, 340D2, 340F - "DB" LINKAGE.
NEW TERAN RIPPER FOR CAT 330 - "D" LINKAGE.
NEW TERAN RIPPER FOR CAT 325D AND 324D, 324E, 326D2, 326F, 328D, 329D, 329D2, 329E, 329F, 330D2, 330F, 335F - "CB" LINKAGE.
NEW TERAN RIPPER FOR CAT 320 AND 319D, 320D, 320E, 321D, 323E, 323F, 325F - "B" LINKAGE.
NEW TERAN RIPPER FOR CAT 312 AND 311D, 311F, 312D, 312D2, 312E, 312F, 313D2, 313F, 314D, 314E, 314F, 315F - "312" LINKAGE.
NEW TERAN RIPPER FOR CAT 307.
NEW TERAN RIPPER FOR CAT 305.
NEW TERAN RIPPER FOR CAT 304.
NEW TERAN RIPPER FOR CAT 303.
NEW TERAN RIPPER FOR CAT 302.
NEW TERAN RIPPER FOR CAT 301.
NEW TERAN RIPPER FOR KOMATSU PC120 60MM PIN.
(2) NEW TROJAN RIPPER Cat 336 DB linkage.
(2) NEW TROJAN RIPPER 90mm pins fits to: Cat 325/330/324, Hitachi 230/270, Hyundai R250LC-7, Komatsu PC300, PC360 Deere 240D/270D, Kobelco SK250/SK290/SK330/SK350, Case 240/290/330.
(2) NEW TROJAN RIPPER 80mm pins fits to: Cat 320/321/323, Hyundai R210, Komatsu PC200/220, Deere 160/200/225, Kobelco SK210, Case 210/225, Doosan DX225.
(2) NEW TROJAN RIPPER 65mm pins fits to: Cat 311/312/313/314 Kobelco 140, Deere/Hitachi ZX120/135, Case 130/135, Doosan DX140.

GRAPPLE

NEW TERAN 40IN. MANUAL FOR CAT 325D AND 324D, 324E, 326D2, 326F, 328D, 329D, 329D2, 329E, 329F, 330D2, 330F, 335F WITH JAGGED TEETH, ROD ASSY & BRACKET - "CB" LINKAGE.

250 EXCAVATOR BUCKETS

(2) CAT 82IN. DITCHING BUCKET CAT 82" DITCHING BUCKET. 80MM PIN TO FIT CAT 320/321/323, KOMATSU PC210/228, JOHN DEERE 200/225, KOBELCO 210, CASE 210/225, DOOSAN DX225.
(8) CAT 72IN. DITCHING BUCKET 65MM PIN SIZE TO FIT CAT 311/312/313, KOMATSU PC130/138, JOHN DEERE 120/135, CASE 130/135, KOBELCO 115/135, HYUNDAI 140, DOOSAN DX140.
NEW CAT 48IN. DIGGING BUCKET 80MM PIN TO FIT CAT 320/321/323, KOMATSU PC210/228, JOHN DEERE 200/225, KOBELCO 210, CASE 210/225, DOOSAN DX225.
(3) CAT 24IN. DIGGING BUCKET 65MM PIN SIZE TO FIT CAT 311/312/313, KOMATSU PC130/138, JOHN DEERE 120/135, CASE 130/135, KOBELCO 115/135, HYUNDAI 140, DOOSAN DX140.
CAT 18IN. DIGGING BUCKET 65MM PIN SIZE TO FIT CAT 311/312/313, KOMATSU PC130/138, JOHN DEERE 120/135, CASE 130/135, KOBELCO 115/135, HYUNDAI 140, DOOSAN DX140.
(8) STRICKLAND 84IN. DITCHING BUCKET 80MM PIN TO FIT CAT 320/321/323, KOMATSU PC210/228, JOHN DEERE 200/225, KOBELCO 210, CASE 210/225, DOOSAN DX225.
(2) STRICKLAND 60IN. DITCHING BUCKET 80MM PIN TO FIT CAT 320/321/323, KOMATSU PC210/228, JOHN DEERE 200/225, KOBELCO 210, CASE 210/225, DOOSAN DX225.
(4) NEW STRICKLAND 60IN. DITCHING BUCKET 50MM PIN TO FIT CAT 308, KOMATSU PC78/88, JOHN DEERE 75/85, HITACHI 75/85, CASE CX75/80, KOBELCO 70/80, BOBCAT E80/85.
NEW STRICKLAND 48IN. DIGGING BUCKET 80MM PIN TO FIT CAT 320/321/323, KOMATSU PC210/228, JOHN DEERE 200/225, KOBELCO 210, CASE 210/225, DOOSAN DX225.

NEW TERAN 80IN. CLEAN UP BUCKET FOR CAT 336D AND 336D2, 336E, 336F, 340D2, 340F - "DB" LINKAGE.

NEW TERAN 72IN. CLEAN UP BUCKET FOR KOMATSU PC200 AND PC210, PC220, PC228, PC230, PC240, PC250, PC270, PC290.

NEW TERAN 66IN. SKELETON BUCKET FOR CAT 336D AND 336D2, 336E, 336F, 340D2, 340F WITH SIDE CUTTERS, SIDE PROTECTORS, HEEL SHROUDS, LIP PROTECTORS, REINFORCEMENT PLATES AND 5RC TIPS - "DB" LINKAGE.

NEW TERAN 66IN. HD DIGGING BUCKET FOR CAT 325D AND 324D, 324E, 326D2, 326F, 328D, 329D, 329D2, 329E, 329F, 330D2, 330F, 335F WITH SIDE CUTTERS, SIDE PROTECTORS, HEEL SHROUDS, LIP PROTECTORS, REINFORCEMENT PLATES AND 7RC TIPS - "CB" LINKAGE.

NEW TERAN 66IN. HD DIGGING BUCKET FOR CAT 336D AND 336D2, 336E, 336F, 340D2, 340F WITH SIDE CUTTERS, SIDE PROTECTORS, HEEL SHROUDS, LIP PROTECTORS, REINFORCEMENT PLATES AND 6RC TIPS - "DB" LINKAGE.

NEW TERAN 60IN. MUD BUCKET for KOMATSU PC220.

NEW TERAN 60IN. HD DIGGING BUCKET FOR CAT 325D AND 324D, 324E, 326D2, 326F, 328D, 329D, 329D2, 329E, 329F, 330D2, 330F, 335F WITH SIDE CUTTERS, SIDE PROTECTORS, HEEL SHROUDS, LIP PROTECTORS, REINFORCEMENT PLATES AND 6RC TIPS - "CB" LINKAGE.

NEW TERAN 60IN. CLEAN UP BUCKET FOR CAT 312 AND 311D, 311F, 312D, 312D2, 312E, 312F, 313D2, 313F, 314D, 314E, 314F, 315F - "312" LINKAGE.

NEW TERAN 60IN. CLEAN UP BUCKET FOR VOLVO EC140 65MM PIN.

NEW TERAN 56IN. HD DIGGING BUCKET FOR CAT 330 WITH SIDE CUTTERS, SIDE PROTECTORS, HEEL SHROUDS, LIP PROTECTORS, REINFORCEMENT PLATES AND 6RC TIPS - "D" LINKAGE.

NEW TERAN 54IN. HD DIGGING BUCKET FOR CAT 325D AND 324D, 324E, 326D2, 326F, 328D, 329D, 329D2, 329E, 329F, 330D2, 330F, 335F WITH SIDE CUTTERS, SIDE PROTECTORS, HEEL SHROUDS, LIP PROTECTORS, REINFORCEMENT PLATES AND 6RC TIPS - "CB" LINKAGE.

NEW TERAN 48IN. MUD BOCE BUCKET FOR CAT 307.

NEW TERAN 48IN. HD DIGGING BUCKET FOR CAT 320 AND 319D, 320D, 320E, 321D, 323E, 323F, 325F WITH SIDE CUTTERS, SIDE PROTECTORS, HEEL SHROUDS, LIP PROTECTORS, REINFORCEMENT PLATES AND 6HD TIPS - "B" LINKAGE, 80MM PINS.

NEW TERAN 48IN. HD DIGGING BUCKET FOR CAT 325D AND 324D, 324E, 326D2, 326F, 328D, 329D, 329D2, 329E, 329F, 330D2, 330F, 335F WITH SIDE CUTTERS, SIDE PROTECTORS, HEEL SHROUDS, LIP PROTECTORS, REINFORCEMENT PLATES AND 6RC TIPS - "CB" LINKAGE.

NEW TERAN 48IN. HD DIGGING BUCKET FOR CAT 336D AND 336D2, 336E, 336F, 340D2, 340F WITH SIDE CUTTERS, SIDE PROTECTORS, HEEL SHROUDS, LIP PROTECTORS, REINFORCEMENT PLATES AND 5RC TIPS - "DB" LINKAGE.

NEW TERAN 48IN. HD DIGGING BUCKET FOR JD D270/ZX270 WITH SIDE CUTTERS, SIDE PROTECTORS, HEEL SHROUDS, LIP PROTECTORS, REINFORCEMENT PLATES AND 6RC TIPS.

NEW TERAN 48IN. HD DIGGING BUCKET FOR KOMATSU PC200 AND PC210, PC220, PC228, PC230, PC240, PC250, PC270, PC290 WITH SIDE CUTTERS, SIDE PROTECTORS, HEEL SHROUDS, LIP PROTECTORS, REINFORCEMENT PLATES AND 6HD TIPS.

NEW TERAN 48IN. DIGGING BUCKET FOR KOMATSU PC120 60MM PIN WITH REINFORCEMENT PLATES AND 6HD TIPS.

NEW TERAN 48IN. DIGGING BUCKET FOR KOMATSU PC300 (1.23M3) 5 RC TIPS.

NEW TERAN 48IN. CLEAN UP BUCKET FOR CAT 305.

NEW TERAN 48IN. CLEAN UP BUCKET FOR CAT 312 CAT 312 and 311D, 311F, 312D, 312D2, 312E, 312F, 313D2, 313F, 314D, 314E, 314F, 315F.

NEW TERAN 42IN. SKELETON CLEAN UP BUCKET FOR CAT 303 WITH 7HD TIPS.

NEW TERAN 42IN. HD DIGGING BUCKET FOR CAT 320 AND 319D, 320D, 320E, 321D, 323E, 323F, 325F WITH SIDE CUTTERS, SIDE PROTECTORS, HEEL SHROUDS, LIP PROTECTORS, REINFORCEMENT PLATES AND 5HD TIPS - "B" LINKAGE.

NEW TERAN 42IN. HD DIGGING BUCKET FOR CAT 325D AND 324D, 324E, 326D2, 326F, 328D, 329D, 329D2, 329E, 329F, 330D2, 330F, 335F WITH SIDE CUTTERS, SIDE PROTECTORS, HEEL SHROUDS, LIP PROTECTORS, REINFORCEMENT PLATES AND 5RC TIPS - "CB" LINKAGE.

NEW TERAN 42IN. HD DIGGING BUCKET FOR CAT 336D AND 336D2, 336E, 336F, 340D2, 340F WITH SIDE CUTTERS, SIDE PROTECTORS, HEEL SHROUDS, LIP PROTECTORS, REINFORCEMENT PLATES AND 4RC TIPS - "DB" LINKAGE.

NEW TERAN 42IN. DIGGING BUCKET FOR CAT 307 WITH SIDE CUTTERS, REINFORCEMENT PLATES AND 7HD TIPS.

NEW TERAN 42IN. CLEAN UP BUCKET FOR CAT 303.

NEW TERAN 42IN. CLEAN UP BUCKET FOR CAT 304.

NEW TERAN 36IN. SKELETON CLEAN UP BUCKET FOR CAT 301 WITH 7HD TIPS.

NEW TERAN 36IN. HD DIGGING BUCKET FOR CAT 320 AND 319D, 320D, 320E, 321D, 323E, 323F, 325F WITH SIDE CUTTERS, SIDE PROTECTORS, HEEL SHROUDS, LIP PROTECTORS, REINFORCEMENT PLATES AND 5HD TIPS - "B" LINKAGE.

NEW TERAN 36IN. HD DIGGING BUCKET FOR CAT 325D AND 324D, 324E, 326D2, 326F, 328D, 329D, 329D2, 329E, 329F, 330D2, 330F, 335F WITH SIDE CUTTERS, SIDE PROTECTORS, HEEL SHROUDS, LIP PROTECTORS, REINFORCEMENT PLATES AND 5RC TIPS - "CB" LINKAGE.

NEW TERAN 36IN. HD DIGGING BUCKET FOR CAT 336D AND 336D2, 336E, 336F, 340D2, 340F WITH SIDE CUTTERS, SIDE PROTECTORS, HEEL SHROUDS, LIP PROTECTORS, REINFORCEMENT PLATES AND 4RC TIPS - "DB" LINKAGE.

NEW TERAN 36IN. CLEAN UP BUCKET FOR CAT 301 - 30MM PINS.

NEW TERAN 36IN. CLEAN UP BUCKET FOR CAT 302.

NEW TERAN 30IN. HD DIGGING BUCKET FOR CAT 320 AND 319D, 320D, 320E, 321D, 323E, 323F, 325F WITH SIDE CUTTERS, SIDE PROTECTORS, HEEL SHROUDS, LIP PROTECTORS, REINFORCEMENT PLATES AND 4HD TIPS - "B" LINKAGE.

NEW TERAN 30IN. HD DIGGING BUCKET FOR CAT 325D AND 324D, 324E, 326D2, 326F, 328D, 329D, 329D2, 329E, 329F, 330D2, 330F, 335F WITH SIDE CUTTERS, SIDE PROTECTORS, HEEL SHROUDS, LIP PROTECTORS, REINFORCEMENT PLATES AND 4RC TIPS - "CB" LINKAGE.

NEW TERAN 30IN. HD DIGGING BUCKET FOR CAT 336D AND 336D2, 336E, 336F, 340D2, 340F WITH SIDE CUTTERS, SIDE PROTECTORS, HEEL SHROUDS, LIP PROTECTORS, REINFORCEMENT PLATES AND 3RC TIPS - "DB" LINKAGE.

NEW TERAN 30IN. HD DIGGING BUCKET FOR KOMATSU PC200 AND PC210, PC220, PC228, PC230, PC240, PC250, PC270, PC290 WITH SIDE CUTTERS, SIDE PROTECTORS, HEEL SHROUDS, LIP PROTECTORS, REINFORCEMENT PLATES AND 4HD TIPS.

NEW TERAN 30IN. DIGGING BUCKET FOR CAT 304 WITH SIDE CUTTERS, REINFORCEMENT PLATES AND 6HD TIPS.

NEW TERAN 30IN. DIGGING BUCKET FOR VOLVO EC140 65MM PIN WITH REINFORCEMENT PLATES AND 4HD TIPS.

NEW TERAN 30IN. DIGGING BUCKET for CAT 345.

NEW TERAN 24IN. SKELETON BUCKET FOR CAT 303 WITH 5HD TIPS.

NEW TERAN 24IN. DIGGING BUCKET FOR CAT 301 WITH SIDE CUTTERS AND 5HD TIPS.

NEW TERAN 24IN. DIGGING BUCKET FOR CAT 302 WITH SIDE CUTTERS, REINFORCEMENT PLATES AND 5HD TIPS - 35MM PINS.

NEW TERAN 24IN. DIGGING BUCKET FOR CAT 303 WITH SIDE CUTTERS, REINFORCEMENT PLATES AND 5HD TIPS.

NEW TERAN 24IN. DIGGING BUCKET FOR CAT 304 WITH SIDE CUTTERS, REINFORCEMENT PLATES AND 5HD TIPS.

NEW TERAN 24IN. DIGGING BUCKET FOR CAT 305 WITH SIDE CUTTERS, REINFORCEMENT PLATES AND 5HD TIPS.

NEW TERAN 24IN. DIGGING BUCKET FOR CAT 307 WITH SIDE CUTTERS, REINFORCEMENT PLATES AND 4HD TIPS.

NEW TERAN 18IN. DIGGING BUCKET FOR CAT 301 WITH SIDE CUTTERS AND 4HD TIPS.

NEW TERAN 18IN. DIGGING BUCKET FOR CAT 302 WITH SIDE CUTTERS, REINFORCEMENT PLATES AND 4HD TIPS.

NEW TERAN 18IN. DIGGING BUCKET FOR CAT 303 WITH SIDE CUTTERS, REINFORCEMENT PLATES AND 4HD TIPS.

NEW TERAN 18IN. DIGGING BUCKET FOR CAT 304 WITH SIDE CUTTERS, REINFORCEMENT PLATES AND 4HD TIPS.

NEW TERAN 18IN. DIGGING BUCKET FOR CAT 305 WITH SIDE CUTTERS, REINFORCEMENT PLATES AND 4HD TIPS.

NEW TERAN 18IN. DIGGING BUCKET FOR CAT 307 WITH SIDE CUTTERS, REINFORCEMENT PLATES AND 3HD TIPS.

NEW TERAN 18IN. DIGGING BUCKET FOR CAT 416/428 WITH REINFORCEMENT PLATES AND 4HD TIPS.

NEW TERAN 12IN. DIGGING BUCKET FOR CAT 301 WITH SIDE CUTTERS AND 3HD TIPS.

NEW TERAN 12IN. DIGGING BUCKET FOR CAT 302 WITH SIDE CUTTERS, REINFORCEMENT PLATES AND 3HD TIPS.

NEW TERAN 12IN. DIGGING BUCKET FOR CAT 303 WITH SIDE CUTTERS, REINFORCEMENT PLATES AND 3HD TIPS.

NEW TERAN 12IN. DIGGING BUCKET FOR CAT 305 WITH SIDE CUTTERS, REINFORCEMENT PLATES AND 3HD TIPS.

NEW TERAN 12IN. DIGGING BUCKET FOR CAT 307 WITH SIDE CUTTERS, REINFORCEMENT PLATES AND 3HD TIPS.

NEW TERAN 12IN. BANANA BUCKET FOR CAT 312 AND 311D, 311F, 312D, 312D2, 312E, 312F, 313D2, 313F, 314D, 314E, 314F, 315F WITH REINFORCEMENT PLATES AND 3HD TIPS - "312" LINKAGE.

NEW EMAQ 60IN. CLEAN UP BUCKET



66IN. HYDRAULIC ANGLE DITCHING BUCKET fits Cat 315/316.

TITAN 54IN. DIGGING BUCKET
52IN. DIGGING BUCKET fits PC160.
48IN. DIGGING BUCKET for Cat 320.
32IN. DIGGING BUCKET for Cat 315.
2015 ESCO 36IN. DIGGING BUCKET
HENSLEY 36IN. DIGGING BUCKET
36IN. DIGGING BUCKET fits Cat 315/316.
2020 30IN. DIGGING BUCKET fits John Deere 160lc.
WERK 24IN. DIGGING BUCKET
ESCO 20IN. DIGGING BUCKET fits PC160/316/315.
12IN. DIGGING BUCKET for Cat 303/305
12IN. DIGGING BUCKET for Cat 303/305.

14 EXCAVATOR ATTACHMENTS

NEW GENPAC GE970 HYDRAULIC PLATE COMPACTOR fits 37,000lb machines.
NEW TERAN 18IN. COMPACTION WHEEL FOR VOLVO EC140.
NEW TERAN 23IN. STUMP SHEAR FOR CAT315 (HARDOX 500+NM400).
NEW TERAN 26IN. STUMP SHEAR FOR KOMATSU PC220 (HARDOX 500+NM400).
NEW HYDRAULIC CLAM BUCKET for 320 size machines.
NEW TERAN BUCKET PIN FRONT & REAR - FOR CAT 320 - ("B" LINKAGE) 80X545MM.
NEW TERAN BUCKET PIN FRONT & REAR FOR CAT 315 AND KOMATSU PC160 - "315" LINKAGE.
NEW TERAN BUCKET PIN 45MM X 345MM FOR CAT 305, 306.
NEW TERAN BUCKET PIN REAR FOR CAT 330 - 80MM ("D" LINKAGE) (80MM X 630MM) (24.8" LONG).
NEW TERAN BUCKET PIN FRONT FOR CAT 330 - 90MM ("D" LINKAGE) (90MM X 650MM) (24.8" LONG).
NEW TERAN BUCKET PIN 100MX715MM FOR JD350, KOBELCO SK450 AND ALL 100MM PINS BUCKETS.
NEW TERAN BUCKET PIN FOR CAT 303 - 40X295MM.
BSP SCV60 SIDE CLAMP VIBRATORY EXTRACTOR SN:89049 fits Komatsu PC390.
BSP SCV60 SIDE CLAMP VIBRATORY EXTRACTOR SN:89058 fits Cat M322.

14 LIGHT PLANTS



2017 MAGNUM MLT6SK SN:3001756892 diesel engine, 4-1,000 watt lightbulbs, 6KW, trailer mounted.



MAGNUM MLT6SK diesel engine, 4-1,000 watt lightbulbs, 6KW, trailer mounted.

MAGNUM diesel engine, 4-1,000 watt lightbulbs, 6KW, trailer mounted.

(5) 2014 ALLMAND PRO-V diesel engine, 4-1,000 watt lightbulbs, 6KW, trailer mounted.
(3) 2014 WANCO WLTC4K diesel engine, 4-1,000 watt lightbulbs, 6KW, trailer mounted.
(2) 2013 WANCO WLTC4K diesel engine, 4-1,000 watt lightbulbs, 6KW, trailer mounted.
WACKER diesel engine, 4-1,000 watt lightbulbs, 6KW, trailer mounted.

11 ARROW/MESSAGE BOARDS



ADDCO DH100 VARIABLE MESSAGE BOARD

VN:513763

ADDCO DH100 VARIABLE MESSAGE BOARD

VN:584010



ADDCO VARIABLE MESSAGE BOARD VN:589042

ADDCO VARIABLE MESSAGE BOARD VN:588274

ITCP CMS100 VARIABLE MESSAGE BOARD VN:1004

(2) ITCP CMS100 VARIABLE MESSAGE BOARD parts.



ITCP CMS100 VARIABLE MESSAGE BOARD parts.



VERMAC VARIABLE MESSAGE BOARD VN:132199

VERMAC VARIABLE MESSAGE BOARD VN:5132167



AM SIGNAL VARIABLE MESSAGE BOARD VN:228054

PIPE PULLER



CASE MAXI-SNEAKER IRRIGATION POLY

WATER PUMP

ACME DYNAMICS DP150M SN:30401 Deutz F4M1011F diesel engine, 6in. diameter, 58 Gallon Fuel tank, Galvanized Trailer w/jacks.

HORIZONTAL DRILL



VERMEER NAVIGATOR D33X44

SN:1VRT180R1Y1000442 Cummins diesel engine, 450ft of Rods, 2,854 hours.

JAW CRUSHER



2006 EXTEC C10 SN:9975 Deutz diesel engine, excellent condition, track mounted, 1,478 hours.

SCREENING PLANT



2006 EXTEC S4 SN:10311 Deutz diesel engine, excellent condition, 1,494 hours.

PALLET GRINDER



HATLAPA R200 SN:2007002 Large Hopper, Discharge Conveyor, 3 Phase Electric Motors.

4 SWEEPERS



2016 TERRAMITE COMMANDER SN:1603SBD02 diesel engine, OROPS, 8ft. Broom, water system.

2009 JOHNSTON 4000MB

VN:VN:1J9VM4LF89C172052 diesel engine, Cab, dual wheel single axle.



ELGIN EAGLE VN:1023 Cummins diesel engine, sweeper, dual wheel single axle, 15,460 miles, 2,119 hours.

LAYMOR 8HC diesel engine, OROPS, 8ft. Broom, water system.

WATER TANKER

CAT D250D SN:6NG00304 Cat diesel engine, EROPS, 5,000 gallon water tank, manual cannon, hose reel, 23.5R25 rubber.

WATER TRUCK



1994 CHEVY VN:N/A Cat 3116 diesel engine, 6 speed transmission, power steering, New 2000 gallon water tank w/ spray head & hose reel, dual wheel single axle.

4 TAGALONG TRAILERS

(4) NEW 2021 DELTA 20FT. 20ft. X 7ft. Tilt deck, 14,000lb GVWR, electric brakes, Bulldog 10,000lb jack, adjustable hitch, chain storage, LED lights, tandem axle.

DUMP TRAILERS

(2) NEW 2021 DELTA 14ft x 7ft. Dump body, (2) 7,000lb axles, electric brakes, wired remote, wireless remote, locking chain storage, slid in loading ramps, barn style or swing rear gate, D-rings, LED lights, adjustable coupler, 235/80R16 tires, tandem axle.

MAGNET

44IN. SCRAP

MULTI-USE CONTAINERS

(2) NEW 40FT. HIGH CUBE CONTAINER Details: Four Side Open Door, one end door, lock box, side forklift pockets.

5 CONTAINERS

(2) NEW 9FT. With 1 Door & 1 Window.

(2) NEW 8FT. With 1 Door & 1 Window.

NEW 7FT. With 1 Door & 1 Window.

SCRAP RECYCLING EQUIPMENT

NEW GREATBEAR 1 YARD SELF DUMPING HOPPER

5 STORAGE BUILDINGS

(2) NEW GOLDEN MOUNT 30FT. X 85FT. X 15FT.

Snow Rating Test Report; SGS fabric Certificate, Dome roof frame, snow rating:180kg.

NEW GOLDEN MOUNT 40FT. X 20FT. Snow Rating Test Report;SGS fabric Certificate, Peak roof frame , snow rating:200kg.

(2) NEW GOLDEN MOUNT 40FT. X 20FT. Snow Rating Test Report; SGS fabric Certificate, PE fabric galvanized tube, UV-resistance & fire- retardant.

PORTABLE BATHROOM STATIONS

NEW BASTONE 110V PORTABLE TOILET W/ DOUBLE STALL

NEW BASTONE 110V PORTABLE TOILETS W/ SHOWER

PARTY RENTAL SUPPLIES

NEW GOLDEN MOUNT 20FT. X 40FT. 18 removable side walls w/PVC clear windows, two zipper Doors, heavy duty frames & 380gsm PVC coated fabrics, waterproof, fire & UV resistant.

16 PALLETS OF STONES

(16) NEW PALLET OF STONES

12 PRESSURE WASHERS



(4) NEW EASY KLEEN MAGNUM GOLD gas engine, 4000PSI, 12Volt, 15hp, Hot Water, totally self contained.

(4) NEW LIFAN LFQ3370 RECOIL 3300PSI 7hp Recoil start EPA gas engine, 25ft. PVC high pressure hose, 16in. Gun and lance w/ adjustable spray wand, hose hanger & wand brackets for EZ storage.

(4) NEW LIFAN LFQ3300 STORM 3300 PSI OEM gas engine, 2.5 GPM.

200 NEW SUPPORT EQUIPMENT

SIMILAR TO ITEMS SEEN ON PAGES 13-14



DAY 3

SATURDAY, APRIL 10TH

Rubber Tired Loaders, Tool Carriers, Crawler Tractors, Crawler Loaders, Crawler Dumps, Tractor Loader Backhoes, Rubber Tracked Skid Steers, Skid Steers & Attachments, Telescopic & Straight Mast Forklifts, Service Trucks, (15-25) Hydraulic Excavators, Boom & Scissor Lifts, Asphalt Distributor Trucks & Trailers, Road Wideners, Profilers, Asphalt Pavers, Paving Equipment, Asphalt & Vibratory Rollers, Compactors, Concrete Pavers, Trench Rollers, 1/2 Generators, Air Compressors, Welders, 1/2 Water Pumps, Mowers, Landscape Equipment, Compact/Utility Tractors, Landscape & Agricultural Tractors, Utility Vehicles, Golf Carts, Air Compressors, Tagalongs & Several New Detachable Trailers, Classic Cars, New Cars, Motorcycles, Recreational Vehicles, Boats, Attachments, 1/2 Light Plants/ Arrow Boards, Support-Office & Survey Equipment, 1/3 Recreational Vehicles, Pallets of Stone.

20 RUBBER TIRED LOADERS



CAT 980G SERIES II SN:AWH01391 Cat diesel engine, Cab, a/c, autolube, command control steering, Cat scale, 7 yard GP bucket, 29.5 x 25 rubber.

CAT 980G SN:9CM01801 Cat diesel engine, Cab, a/c, autolube, command control steering, Cat scale, 7 yard GP bucket, 29.5 x 25 rubber.

CAT 950A Cat diesel engine, EROPS, GP bucket.

CAT 938F Cat diesel engine, EROPS, air, GP bucket.

CAT 936F Cat diesel engine, EROPS, air, GP bucket.

CAT 924G Cat diesel engine, EROPS, air, GP bucket.



2011 JOHN DEERE 844K SN:637391 John Deere diesel engine, EROPS, a/c, autolube, command steering, Loadrite scale, joystick & regular steering, 7.25 yard GP bucket, 29.5 x 25 rubber.



2010 JOHN DEERE 844K SN:627832 John Deere diesel engine, EROPS, a/c, autolube, command steering, Loadrite scale, joystick & regular steering, 7.25 yard GP bucket, 29.5 x 25 rubber.

2012 JOHN DEERE 644K John Deere diesel engine, EROPS, air, heat, ride control, 5 yard GP bucket, 23.5R25 rubber.

2020 JOHN DEERE 244L John Deere diesel engine, EROPS, air, heat, 2-speed, skid steer style coupler, GP bucket, Michelin Bibload rubber, 125 hours. Warranty till Oct. 2021.

2020 JOHN DEERE 244L John Deere diesel engine, EROPS, air, heat, 2-speed, skid steer style coupler, GP bucket, Michelin Bibload rubber, 100 hours. Warranty till Oct. 2021.

2020 JOHN DEERE 244L John Deere diesel engine, EROPS, air, heat, 2-speed, skid steer style coupler, GP bucket, Michelin Bibload rubber, 150 hours. Warranty till Oct. 2021.

(2) 2020 LIEBHERR L506 Yanmar 4TNV98C diesel engine, EROPS, quick coupler, GP bucket. Forks Sell Separately.

2009 KOMATSU WA250 SN:3007 Komatsu diesel engine, EROPS, 2.3 yard GP bucket.

KOMATSU WA250 SN:71390 Komatsu diesel engine, EROPS, GP bucket.

2015 VOLVO LG959 SN:9002671 diesel engine, EROPS, air, heat, 3rd valve hydraulics, GP bucket, 23.5R25 rubber.

SAMSUNG SL250-2 SN:PB0145 diesel engine, EROPS, GP bucket.

KAWASAKI 80Z SN:80C4-5212 diesel engine, EROPS, GP bucket.



2020 CAT D3KXL Cat diesel engine, EROPS, air, heat, 6 way blade, long track frame, very low hours.



CAT D3B SN:23Y02508 Cat diesel engine, EROPS, 6 way blade.

CRAWLER LOADER

CAT 963CLGP SN:2DS01955 Cat diesel engine, EROPS, air, wide pads, quick coupler, 102in. GP bucket w/ teeth.

11 TRACTOR LOADER BACKHOES

2018 CAT 420F2 SN:HWC03514 4x4, Cat diesel engine, EROPS, air, heat, pattern changer, extendahoe, pilot controls, flip pads, GP front bucket, rear digging bucket, 954 hours.



2018 CAT 420F2 SN:HWC04034 4x4, Cat diesel engine, EROPS, air, heat, pattern changer, extendahoe, pilot controls, flip pads, rear auxiliary hydraulics, GP front bucket, rear digging bucket, 1,032 hours.

2018 CAT 420F2 SN:HWC03288 4x4, Cat diesel engine, EROPS, air, heat, pattern changer, extendahoe, pilot controls, flip pads, rear auxiliary hydraulics, GP front bucket, rear digging bucket, 1,181 hours.



2017 CAT 420F2 SN:HWC02704 4x4, Cat diesel engine, EROPS, air, heat, pattern changer, extendahoe, pilot controls, flip pads, rear auxiliary hydraulics, GP front bucket, rear digging bucket, 1,085 hours.



2016 CAT 420F2 SN:HWC01347 4x4, Cat diesel engine, EROPS, air, heat, pattern changer, extendahoe, pilot controls, flip pads, GP front bucket, rear digging bucket, 1,425 hours.



2014 CAT 420F SN:SKR02162 4x4, Cat diesel engine, EROPS, air, heat, extendahoe, GP front bucket, rear digging bucket.

2018 CAT 416F2 SN:HWB01376 4x4, Cat diesel engine, EROPS, air, heat, pattern changer, extendahoe, pilot controls, flip pads, GP front bucket, rear digging bucket, 693 hours.

CAT 416D SERIES II SN:BFP16890 Cat diesel engine, EROPS, GP front bucket, rear digging bucket, 2,120 hours.



CAT 426 SERIES II SN:7BC04631 4x4, Perkins diesel engine, EROPS, extendahoe, GP front bucket, 24in. Rear digging bucket, 12.5/80-18 front tires, 19.5L-24 rear tires.

2014 JOHN DEERE 310 SUPER K 4x4, John Deere diesel engine, EROPS, air, heat, pilot controls, extendahoe, auxiliary hydraulics, GP front bucket, rear digging bucket.



2013 CASE 580 SUPER N SN:VDC586538 4x4, diesel engine, EROPS, air, two lever pilot controls, ride control, rear auxiliary hydraulics, rear mechanical quick coupler, GP front bucket, 24in. rear digging bucket, 12.5 x 16 fronts, 19.5L24 rears.



2009 NEW HOLLAND W110B SN:N9F206557 diesel engine, EROPS, GP bucket, 17 x 25 rubber.

INTEGRATED TOOL CARRIER

CAT IT28B Cat diesel engine, EROPS, air, IT arrangement, 3rd valve hydraulics, quick coupler, GP bucket.

TOOL CARRIER ATTACHMENT

NEW TERAN 60IN. PALLET FORKS FOR CAT IT 14/28.

5 CRAWLER TRACTORS

CAT D8R SN:7XM01576 Cat diesel engine, EROPS, air, Straight blade, single shank rear ripper.

CAT D4GXL SN:HYD01473 Cat diesel engine, equipped with EROPS, air, 6 way blade, Topcon ready, long track frame. Fresh bushing turn w/ new sprockets.



CAT D4C SN:700D4CJCS01629 Cat diesel engine, EROPS, 6 way blade.

4 TRACTOR LOADER BACKHOE ATTACHMENTS



ARROWHEAD R75S HYDRAULIC HAMMER
SN:79061611



ARROWHEAD R65S HYDRAULIC HAMMER
SN:W005427



ARROWHEAD R65S HYDRAULIC HAMMER
SN:W005493
2009 CTI 42IN. FORKS SN:47757

3 ASPHALT PAVERS



BLAW KNOX PF3172 SN:317201-08 Cummins 4BTA 3.9C diesel engine, dual operator stations, Omni III screed, 16.00-24TG rear tires.

BLAW KNOX PF-400A SN:40004-02 John Deere Diesel 4239T diesel engine, Dual Drive Stations, 8ft. -14' Screed, Rubber Pad Tracks, Good Augers, Former State Owned Machine with only 1266 Original Hours, New Paint
MAULDIN 1500 SUPER SN:00265, P-00032 Kubota V2203E diesel engine, 8ft.-13ft. Screed, Dual Drive Station, Wheel Driven, (4) Auger Screed System, Wide Hopper.

CONCRETE PAVER



POWERCURBER 5700 SIDEWALK & GUTTER
SN:57088163 Deutz diesel engine, molds, 2,356 hours.

12 ASPHALT ROLLERS



2011 CAT CB54XW SN:JLM00362 Cat diesel engine, OROPS, hydrostatic, 79in. Smooth drum, double drum, Versa-Vibe, water system, off-set hitch option.



2014 CAT CB44B SN:NSL00178 Cat diesel engine, OROPS, hydrostatic, 59in. Smooth drum, vibratory drum, drum drive, water system, dual amplitude and frequency system, water system, swivel operator station, 1,925 hours.



CAT CB434C SN:04DN00231 Cat diesel engine, OROPS, 56in. smooth drum, vibratory drum, double drum, drum drive, water system.



CAT CB434C SN:4DN00100 Cat diesel engine, ROPS, 56in. Smooth drum, vibratory drum, double drum, drum drive, water system, 2,224 hours.



CAT CB224E SN:22403403 Cat diesel engine, ROPS, 47in. Smooth drum, vibratory drum, double drum, drum drive, water system.

CAT CB224E SN:22401609 Cat diesel engine, ROPS, 47in. Smooth drum, vibratory drum, double drum, drum drive, water system.



CAT CB214D SN:1TZ00391 Cat diesel engine, ROPS, 40in. Smooth drum, vibratory drum, double drum, drum drive, water system.



2014 BOMAG BW138AD-5 SN:650301334 diesel engine, ROPS, 54in. Smooth drum, vibratory drum, double drum, drum drive, water system.

2013 BOMAG BW120AD-5 SN:880231021 diesel engine, ROPS, 47in. Smooth drum, vibratory drum, double drum, drum drive, water system.



INGERSOLL RAND D50 SN:62125 Detroit diesel engine, ROPS, 74in. Smooth drum, vibratory drum, double drum, drum drive, water system, 1,721 hours.

2011 INGERSOLL RAND SX170 gas engine, 17.7in. Smooth drum, walk behind.



STONE WOLFPAK 6100 SN:RD2006 New Kubota diesel engine, EOPS, smooth drum, double drum, vibratory drum, drum drive, water system.

6 VIBRATORY ROLLERS

2020 DYNAPAC CA2500D Cummins QSF3.8 diesel engine, EROPS, air, 84in. Smooth drum, vibratory drum, drum drive.

2020 DYNAPAC CA1500D Deutz TD 3.6L4 diesel engine, EROPS, air, 66in. Smooth drum, vibratory drum, drum drive.

2019 CAT CS56B Cat diesel engine, EROPS, air, 84in. Smooth drum, vibratory drum, drum drive, push blade, 950 hours. Shell Kit Sells Separately.

2015 CAT CS56B SN:LBH01035 Cat diesel engine, EROPS, air, 84in. Smooth drum, vibratory drum, drum drive, 3,564 hours.

DEMO HAMM H131 SN:HAA00633 diesel engine, EROPS, air, 84in. Smooth drum, vibratory drum, drum drive, 298 hours.

BOMAG BW177D SN:1541059 diesel engine, EROPS, 66in. Smooth drum, vibratory drum, drum drive.

TRENCH ROLLER

WACKER RT820 diesel engine, 33in. Padsfoot drum, vibratory drum, double drum, drum drive.

17 RUBBER TRACKED SKID STEERS



(4) 2020 KUBOTA SVL95-2SHFC Kubota diesel engine, EROPS, air, high flow auxiliary hydraulics, mechanical quick coupler, rubber tracks, GP bucket.



(5) NEW TAKEUCHI TL6 diesel engine, rollcage, auxiliary hydraulics, mechanical quick coupler, rubber tracks, GP bucket.

2019 CASE TV380 SN:452066 diesel engine, EROPS, air, radio, pattern changer, high flow auxiliary hydraulics, hydraulic quick coupler, 84in. GP bucket, 1,380 hours.

2018 CASE TV380 diesel engine, EROPS, air, radio, pattern changer, high flow auxiliary hydraulics, hydraulic quick coupler, 84in. GP bucket, 508 hours.

2018 BOBCAT T870 SN:B47C11739 diesel engine, EROPS, air, 2-speed, high flow auxiliary hydraulics, power-bobtach, joystick controls, New 18in. tracks, 80in. Bucket.

2019 BOBCAT T770 diesel engine, EROPS, air, 2-speed, auxiliary hydraulics, power-bobtach, joystick controls, New 18in. Rubber tracks, 80in. GP bucket.

2019 BOBCAT T595 diesel engine, EROPS, air, heat, deluxe instrumental panel, keyless start, sound reduction, 2-speed, A71 option package, auxiliary hydraulics, Power Bobtach, 16in. rubber tracks, GP bucket. Warrantee paperwork to follow buyer. Machines have up to 2 year, 2,000 hour warrantee. Buyer will need to register unit with local Bobcat dealer @ \$100 transfer fee cost.

2018 BOBCAT T595 SN:B3NK28554 diesel engine, EROPS, air, heat, deluxe instrumental panel, keyless start, sound reduction, 2-speed, A71 option package, auxiliary hydraulics, Power Bobtach, 16in. rubber tracks, GP bucket. Warrantee paperwork to follow buyer. Machines have up to 2 year, 2,000 hour warrantee. Buyer will need to register unit with local Bobcat dealer @ \$100 transfer fee cost.

LIKE NEW BOBCAT T740 diesel engine, EROPS, air, heat, 2-speed, ISO/H pattern controls, ride control, auxiliary hydraulics, hydraulic quick coupler, 18in. Rubber tracks, GP bucket, 888 hours.

2016 CAT 289D SN:TAW05246 Cat diesel engine, EROPS, air, 2-speed, ride control, auxiliary hydraulics, electrical quick coupler, rubber tracks, GP bucket, 2,675 hours.

12 SKID STEERS

2019 CASE SV340 SN:KJM452755 diesel engine, EROPS, air, radio, 2-speed, pattern changer, auxiliary hydraulics, hydraulic quick coupler, 78in. GP bucket, 89 hours.

2019 CASE SV340 SN:TJM452980 diesel engine, EROPS, air, radio, 2-speed, pattern changer, auxiliary hydraulics, hydraulic quick coupler, 78in. GP bucket, 210 hours.

2019 CASE SV340 SN:EJM451311 diesel engine, EROPS, air, radio, 2-speed, pattern changer, auxiliary hydraulics, hydraulic quick coupler, 78in. GP bucket, 205 hours.

2019 CASE SV340 SN:LJM454481 diesel engine, EROPS, air, radio, 2-speed, pattern changer, auxiliary hydraulics, hydraulic quick coupler, 78in. GP bucket, 214 hours.

2019 CASE SV340 SN:EJM452751 diesel engine, EROPS, air, radio, 2-speed, pattern changer, auxiliary hydraulics, hydraulic quick coupler, 78in. GP bucket, 110 hours.

2018 CASE SR270 diesel engine, EROPS, air, radio, 2-speed, pattern changer, auxiliary hydraulics, hydraulic quick coupler, 78in. GP bucket, 273 hours.

2018 BOBCAT S770 SN:AT5A12776 diesel engine, EROPS, air, 2-speed, high auxiliary hydraulics, power-bobtach, joystick controls, 12-16.5 HD tires, 74in. bucket.

2014 BOBCAT S650 SN:ALJ812339 diesel engine, EROPS, air, 2-speed, auxiliary hydraulics, power-bobtach, 74in. GP bucket, 12-16.5 HD rubber.

BOBCAT S530 diesel engine, rollcage, auxiliary hydraulics, mechanical quick coupler, GP bucket.

2017 CAT 272D2 Cat diesel engine, rollcage, 2-speed, pilot controls, high flow auxiliary hydraulics, hydraulic quick coupler, 78in. GP bucket, 12-16.5 rubber.

2018 CAT 262D SN:DTB08247 Cat diesel engine, EROPS, air, 2-speed, ride control, auxiliary hydraulics, mechanical quick coupler, rubber tracks, GP bucket, new rubber, 3,059 hours. Forks Sell Separately.



2016 CAT 246D SN:BYF02390 Cat diesel engine, EROPS, air, two speed, ride control, high flow auxiliary hydraulics, electric quick coupler, rear counterweights, Cat 72in. GP bucket w/BOCE, 12x16.5 tires, 2,660 hours.

71 SKID STEER ATTACHMENTS

ARROWHEAD R75S HYDRAULIC HAMMER

SN:75161702

(2) NEW TROJAN HYDRAULIC HAMMER



ARROWHEAD R45S HYDRAULIC HAMMER

SN:W005172



ARROWHEAD R45S HYDRAULIC HAMMER

SN:45081505



BOBCAT 15C HYDRAULIC AUGER



BRADCO HP600

(3) NEW GREATBEAR TRENCHER

(3) NEW GREATBEAR SH750 HYDRAULIC HAMMER

(5) NEW GREATBEAR AUGER W/ 3-BITS

(3) NEW GREATBEAR ROTARY CULTIVATOR

(5) NEW GREATBEAR 86IN. HYDRAULIC SNOW PLOW

(2) NEW GREATBEAR 78IN. FORK GRAPPLE

(4) NEW GREATBEAR 72IN. HYDRAULIC VIBRATORY ROLLER

(2) NEW GREATBEAR 72IN. HYDRAULIC ROCK BUCKET

(4) NEW GREATBEAR 66IN. BRUSH CUTTER

NEW TERAN 72IN. GP BUCKET FOR CAT 226/299 WITH 8HD TIPS.

(3) NEW 90IN. BUCKET

(2) NEW 84IN. FORK EXTENSION

(2) NEW 3/4 CUBIC YARD CONCRETE PLACEMENT BUCKET

(16) NEW ATTACH FRAME

(2) NEW JBX 4000 48IN. FORKS
NEW GENTEC SET OF 48IN. PALLET FORKS 5,000lb capacity.
(4) NEW (2) Extension Fork
2012 STAR 48IN. FORKS SN:NA
74IN. GP BUCKET

12 TELESCOPIC FORKLIFTS

2015 CAT TL1255D SN:ML700233 4x4, Cat diesel engine, EROPS, air, heat, block heater, 12,000lb lift capacity, 55ft. Reach height, front stabilizers, 17.50-25 rubber.

2015 CAT TL1255D SN:ML700229 4x4, Cat diesel engine, EROPS, air, heat, block heater, 12,000lb lift capacity, 55ft. Reach height, front stabilizers, 17.50-25 rubber, 2,891 hours.

2015 CAT TL1255D SN:ML700226 4x4, Cat diesel engine, EROPS, air, heat, block heater, 12,000lb lift capacity, 55ft. Reach height, front stabilizers, 17.50-25 rubber, 2,891 hours.

2015 CAT TL1055D SN:ML500346 4x4, Cat diesel engine, EROPS, air, heat, block heater, 10,000lb lift capacity, 55ft. Reach height, front stabilizers, 400/75-28 rubber.

CAT TL1055 SN:TBM00859 4x4, Cat diesel engine, EROPS, 10,000lb lift capacity, 55ft. Reach height, front stabilizers.

2015 CAT TL943C SN:THH01816 4x4, Cat diesel engine, EROPS, air, heat, block heater, 9,000lb lift capacity, 43ft. Reach height, 13.00-24 rubber, 2,590 hours.

2019 CAT TH357D 4x4, Cat diesel engine, EROPS, air, heat, block heater, 7,700lb lift capacity, 23ft. Reach height, hydraulic quick coupler, 460,70R24 tires.

2019 CAT TH357D 4x4, Cat diesel engine, EROPS, air, heat, block heater, 7,700lb lift capacity, 23ft. Reach height, hydraulic quick coupler, 460,70R24 tires, 48 hours.



2015 DIECI HERCULES 210.10 SN:PLC2020304 4x4, diesel engine, 168hp, EROPS, air, 21 ton lift capacity, 33.5ft. reach height, hydraulic sideshift, HD 72in. Forks, Bridgestone 23.5R25 foam filled rubber, 2,236 hours.



2015 DIECI HERCULES 210.10 SN:PLC2020303 4x4, diesel engine, 168hp, EROPS, air, 21 ton lift capacity, 33.5ft. reach height, hydraulic sideshift, HD 72in. Forks, Bridgestone 23.5R25 foam filled rubber, 2,050 hours.

JLG G943 4x4, diesel engine, EROPS(missing door), 5,500lb lift capacity, 19ft. Reach height.

2012 GENIE GTH5519 4x4, diesel engine, EROPS, 5,500lb lift capacity, 19ft. Reach height.

FORKLIFT

HYSTER H50XM SN:D177B01895P GM LPG engine, OROPS, 5,000lb lift capacity.

5 BOOM LIFTS

JLG 1250AJP SN:300078856 4x4, Deutz diesel engine, 125ft. Platform height, Skypower, extendable axles, 500lb lift capacity, low hours.

JLG 600S SN:300071460 dual fuel engine, 60ft. Platform height, straight boom, 500lb lift capacity.



UNUSED JLG 450AJ 4x4 SN:73539, diesel engine, 45ft. platform height, articulating boom, JIB, Skypower, swing gate, 500lb lift capacity.



GENIE S80 SN:80075501 4x4, Deutz diesel engine, 80ft. platform height, straight boom, skypower, 500lb lift capacity, foam filled rubber. Refurbished.

GENIE Z80/60 SN:2294 4x4, Deutz diesel engine, 80ft. Platform height, articulating boom, 500lb lift capacity. Genie Certified Reconditioned Equipment Scope of Work (Includes but not limited to): Machine stripped to base assemblies Critical components, such as platforms and jibs, are replaced with new platform and base controls are rebuilt: new decals, joysticks, toggle switches and software Boom wear pads are replaced Boom extend/retract cables are replaced Boom electrical cables are replaced. All limit switches, tilt sensor, angle sensors, alarms and lights are replaced. Fuel tank and fuel system are replaced Hydraulic tank are flushed and cleaned, as well as new hydraulic oil and filters are installed All hydraulic hoses are replaced Steering bearings and king-pins are replaced Engine is replaced (reman). Factory options fitted generators and welder-ready packages- (not in scope of work). Additional only if machine had the option when it left the factory. No add-on Machine fully painted, returned to original factory colors. Full decal replacement. All hydraulic and electric setting are brought back to factory specification. Full function testing completed, including weight testing. All outstanding safety bulletins are completed New Foam Filled Tires.

3 SCISSOR LIFTS



2013 SKYJACK SJIII3219 SN:22056533 electric powered, 19ft. Platform height, slide out deck, 500lb lift capacity.

SNORKEL SPL4084 SN:9600220196 PARTS ONLY.
GENIE 3246 SN:GS4608-91954 PARTS ONLY.

LIFT ATTACHMENT



NEW JLG BOOM LIFT BASKET for JLG 1350-600.

3 AIR COMPRESSORS

2009 ATLASCOPO XAS1600CD6 SN:AIP743384 diesel engine, 1600CFM, trailer mounted.



2014 DOOSAN P425/HP375WCUT4 SN:463205UDYF15 diesel engine, 375CFM, trailer mounted.



CHICAGO PNEUMATIC rebuilt Detroit 92 series diesel engine, trailer mounted.

4 GENERATORS



2014 KOHLER 200 diesel engine, 220KW, skid mounted



INGERSOLL RAND G260 John Deere diesel engine, 260KW, trailer mounted.



2015 KOHLER 60REOZT SN:15013844 diesel engine, 60KW, 100 gallon fuel cell built into trailer, tandem axle. **ALLMAND** SN:27920 diesel engine, trailer mounted.

10 LIGHT PLANTS

(2) **2014 ALLMAND PRO-V** diesel engine, 4-1,000 watt lightbulbs, 6KW, trailer mounted.

(8) **2013 ALLMAND PRO-V** diesel engine, 4-1,000 watt lightbulbs, 6KW, trailer mounted.

AGRICULTURAL TRACTORS W/ LOADERS

VIRTUALLY NEW KUBOTA M7060HDC12 4x4, Kubota V3307-CR-TE4 diesel engine, 71hp, Premium EROPS, air, heat, fully synchronized 6 speed, F12/R12, hydraulic shuttle shift, Kubota LA1154 front loader w/ 72in. GP bucket, 3pt hitch, 540 PTO, 320/70R24 front rubber, 420/75R34 rear rubber.

VIRTUALLY NEW KUBOTA M4-071HDC12 4x4, Kubota V3307-CR-TE4 diesel engine, 73.2hp, Premium EROPS, air, heat, fully synchronized hydraulic shuttle shift, Kubota LA1154 front loader w/ 72in. GP bucket, 3pt hitch, 540 PTO, 320/70R24 front rubber, 420/75R34 rear rubber.

3 TRACTOR LOADERS

VIRTUALLY NEW KUBOTA L4701HST 4x4, Kubota V2403-CR-E4-LB1 diesel engine, 47.3hp, ROPS, 3-range hydrostatic transmission, Kubota LA765 w/ 72in. GP bucket, 3pt, 540/2475 PTO, 10-16.5R front rubber, 17.5L-24R4 rear rubber.

VIRTUALLY NEW KUBOTA L3901DT 4x4, Kubota diesel engine, 37.5hp, ROPS, gear shift sync shuttle, Kubota LA525FL front loader w/ 54in. GP bucket, 3pt hitch, 540/2425 PTO, 27 x 8.50-15R4 front rubber, 15 x 19.5R4 rear rubber.

VIRTUALLY NEW KUBOTA L3301F Kubota diesel engine, 33hp, ROPS, 8x8 gear shift sync shuttle, Kubota LA525FL front loader w/ GP bucket, 3pt hitch, 540/2430 PTO, 7.5L-15 F2 Firestone front rubber, 11.2-24 R1 rear rubber.

3 UTILITY TRACTORS

VIRTUALLY NEW KUBOTA B2320DT 4x4, Kubota D1005-E3-D22 diesel engine, 20.9hp, ROPS, front loader valve, 3pt hitch, 540/960 PTO, 23 x 8.5-9 R4 front rubber, 12-16.5 R4 rear rubber.



CUB CADET 7264 Cab, heat, positrac transmission, 54in. Snow blower.

HUSTLER 6400 HILLSIDER tilt Cab, hill mower, snow blower attachment.

9 COMMERCIAL MOWERS

VIRTUALLY NEW KUBOTA ZD1211-3-60 Kubota D1105-E4-ZD-2 diesel engine, 24.8hp, 2-HST w/ gear reduction transmission, hydraulic independent PTO clutch, 60in. Cutting deck, Kubota Prodeck w/ ACS hydraulic deck lift, 3-blades, 13 gallon fuel tank, 10.6 forward travel speed, 5.3 reverse travel speed, 56.7in. wheelbase, zero turn, 15 x 6.5-8 low pro front tires, 26 x 12-16 low pro rear tires.

(2) **VIRTUALLY NEW KUBOTA Z781KWI-54** Kawasaki GH860V-F gas engine, 29.5hp, Parker HTG14 transmission, 48in. Cutting deck, belt drive PTO, electromagnetic clutch, 6in. Deck depth, 11.6 gallon fuel tank, 11.6 forward travel speed, 5.6 reverse travel speed, 50.9in. wheelbase, zero turn, 13 x 6.5-6 flat free front tires, 24 x 9.5-14 rear tires.

(2) **VIRTUALLY NEW KUBOTA Z751KWI-48** Kawasaki GH7303V-F gas engine, 25hp, Parker HTG14 transmission, 48in. Cutting deck, belt drive PTO, electromagnetic clutch, 6in. Deck depth, 11.6 gallon fuel tank, 11.6 forward travel speed, 5.6 reverse travel speed, 50.9in. wheelbase, zero turn, 13 x 6.5-6 flat free front tires, 24 x 9.5-14 rear tires.

VIRTUALLY NEW KUBOTA Z751KWI-48 Kawasaki GH7303V-F gas engine, 25hp, Parker HTG14 transmission, 48in. Cutting deck, belt drive PTO, electromagnetic clutch, 6in. Deck depth, 11.6 gallon fuel tank, 11.6 forward travel speed, 5.6 reverse travel speed, 50.9in. wheelbase, zero turn, 13 x 6.5-6 flat free front tires, 24 x 9.5-14 rear tires.

VIRTUALLY NEW KUBOTA Z121SKH-48 gas engine, 21hp, 2-HST w/ gear reduction transmission, electric clutch, dry disc brake, belt drive PTO, 48in. Cutting deck, 4.3 gallon fuel tank, 8 forward travel speed, 4 reverse travel speed, 45.5in. Wheelbase, zero turn, 11-4-5 pneumatic front tires, 22 x 10-14 rear tires.

FERRIS IS3100 gas engine, 61in. Cutting deck, zero turn, 500 hours.

FERRIS PRO CUT gas engine, 61in. Cutting deck, zero turn.

COLLECTIBLE VEHICLE



1929 FORD MODEL A REPRODUCTION VN:CT28765 Shay motor company 1980 Composite. Selling to Owner Confirmation.

AUTOMOBILE

2001 MERCEDES BENZ S600

VN:WDBNG78J41A175420 motor and transmission removed, 4-door, black, 109,000 miles.

UTILITY VEHICLE

2002 FORD electric powered, OROPS, 4-passenger.

4 TAGALONG TRAILERS

(4) **NEW 2021 DELTA 20FT. 20ft. X 7ft.** Tilt deck, 14,000lb GVWR, electric brakes, Bulldog 10,000lb jack, adjustable hitch, chain storage, LED lights, tandem axle.

DUMP TRAILERS

(2) **NEW 2021 DELTA 14ft x 7ft.** Dump body, (2) 7,000lb axles, electric brakes, wired remote, wireless remote, locking chain storage, slid in loading ramps, barn style or swing rear gate, D-rings, LED lights, adjustable coupler, 235/80R16 tires, tandem axle.

MULTI-USE CONTAINERS

(2) **NEW 40FT. HIGH CUBE CONTAINER** Details: Four Side Open Door, one end door, lock box, side forklift pockets.

5 CONTAINERS

(2) **NEW 9FT.** With 1 Door & 1 Window.

(2) **NEW 8FT.** With 1 Door & 1 Window.

NEW 7FT. With 1 Door & 1 Window.

SCRAP RECYCLING EQUIPMENT

NEW GREATBEAR 1 YARD SELF DUMPING HOPPER

5 STORAGE BUILDINGS

NEW GOLDEN MOUNT 30FT. X 85FT. X 15FT. Snow Rating Test Report; SGS fabric Certificate, Dome roof frame, snow rating:180kg.

NEW GOLDEN MOUNT 30FT. X 65FT. X 15FT. Snow Rating Test Report; SGS fabric Certificate, Dome roof frame, snow rating:180kg.

NEW GOLDEN MOUNT 20FT. X 30FT. X 12FT. Snow Rating Test Report; SGS fabric Certificate, Peak roof frame, snow rating:200kg.

(2) **NEW GOLDEN MOUNT 40FT. X 20FT.** Snow Rating Test Report; SGS fabric Certificate, PE fabric galvanized tube, UV-resistance & fire-retardant.

PORTABLE BATHROOM STATION

NEW BASTONE 110V PORTABLE TOILET W/ DOUBLE STALL

PARTY RENTAL SUPPLIES

NEW GOLDEN MOUNT 20FT. X 40FT. 18 removable side walls w/PVC clear windows, two zipper Doors, heavy duty frames & 380gsm PVC coated fabrics, waterproof, fire & UV resistant.

16 PALLETS OF STONES

(16) **NEW PALLET OF STONES**

12 PRESSURE WASHERS

(4) **NEW EASY KLEEN MAGNUM GOLD** gas engine, 4000PSI, 12Volt, 15hp, Hot Water, totally self contained.

(4) **NEW LIFAN LFQ3370 RECOIL** 3300PSI 7hp Recoil start EPA gas engine, 25ft. PVC high pressure hose, 16in. Gun and lance w/ adjustable spray wand, hose hanger & wand brackets for EZ storage.

(4) **NEW LIFAN LFQ3300 STORM** 3300 PSI OEM gas engine, 2.5 GPM.

200 NEW SUPPORT EQUIPMENT

SIMILAR TO ITEMS SEEN ON PAGES 13-14



****TIMED AUCTION****

Please feel free to preview any of our Virtual Live or Timed Auction sale sites 5 days before auction day!

BIRMINGHAM (WOODLAND), ALABAMA

OPENS: SAT., APRIL 10TH AT 12:00 PM (CST) - CLOSES: WED., APRIL 14TH AT 12:00 PM (CST)

ADDRESS: 23677 Highway 48, Woodland, Alabama 36280. **SPECIAL NOTE:** This part of the auction will be a Live, In-Person event. Masks required. All people attending must follow CDC guidelines for social distancing and hand-washing. Thank you in advance for adhering to these requirements, we appreciate your cooperation! **SALE SITE PHONE:** (315) 633-2944. **AUCTIONEER LICENSE:** 5178. **AUCTION CO.:** 3. **TERMS & CONDITIONS:** "Cash or Company Check" accompanied by current "Bank Letter of Guarantee", made payable to Alex Lyon & Son. Everything Sells "AS IS, "WHERE IS." The following charges will apply on all purchases: (1.) For each unit \$35,001.00 and above, a 5.99% administration fee will be assessed when paying with cash or good check. (The standard fee of 8.99% will be assessed when paying with credit card); and (2.) For each unit \$1,001- \$35,000, a 10% administration fee will be assessed when paying with cash or good check, and a 13% fee will be assessed when paying with credit card. (3.) For each unit \$0- \$1,000, a 12.5% administration fee will be assessed when paying with cash or good check, and a 15.5% fee will be assessed when paying with credit card. ****Please NOTE: An additional fee may be assessed when bidding online****



FOR BID ONLINE TECHNICAL
ASSISTANCE CALL
Proxibid: (855) 636-6461
Nextlot: (919) 361-1111

HYDRAULIC EXCAVATOR

2018 CAT 352F SN:A9J20009 Cat diesel engine, Cab, air, counterweight removal, coupler hydraulic lines, variable gauge undercarriage, 80in. digging bucket

RUBBER TIRED LOADERS

2018 CAT 966M SN:LMM10287 Cat diesel engine, EROPS, air, GP bucket/BOCE, 26.5R25 tires, 415 hours. Emission warranty through 2/2023 or 3000 hours.



CAT 930G SN:TWR01705 Cat diesel engine, EROPS, 3rd valve hydraulics, coupler, GP bucket/BOCE.

CRAWLER TRACTOR

2019 JOHN DEERE 750KXLT John Deere diesel engine, EROPS, air, 6 way blade, 24in. pads, long track frame, 923 hours. hydraulic and Powertrain Warranty through 8/29/23 or 5000 hours.

PIPE LAYER

2012 JOHN DEERE 700J SN:172353 John Deere diesel engine, OROPS, SBG pads, Midwestern M540C side boom, rear draw bar.

CARRY DECK CRANE

2008 BRODERSON IC80-2G SN:587223 Cummins 4 cylinder diesel engine, OROPS, 9 ton lift capacity, 12-30ft. (3) section boom, 10ft. jib, Greer MG586 LMI, anti 2 block, 10.00R15 tires, 1,400 hours.

BOOM LIFT

2017 GENIE Z60/40 SN:Z62H3400 4x4, Perkins 4 Cylinder diesel engine, 60ft. Platform height, articulating boom, power to platform, 500lb lift capacity, 362 hours.

TELESCOPIC FORKLIFT

UNUSED DIECI 12.56C 4x4, Kubota diesel engine, EROPS, air, 12,000lb lift capacity, 56ft. reach height, auxiliary hydraulics, outriggers, 9 hours.

PICKUP TRUCK

2021 GMC SIERRA 2500HD DENALI
VN:1GT48REY8MF125888 Duramax diesel engine, automatic transmission, power steering, Magnum headache rack, aluminum tool box, crew cab, 2in. leveling kit, 35in. tires, 4,842 miles,

TRUCK TRACTOR

2012 WESTERN STAR 4900SA
VN:5KJJALDV0CPBE2211 Detroit DD13 diesel engine, 450hp, Eaton 10 speed transmission, power steering, air ride suspension, double locking rear differentials, power tower with auxiliary transmission, hydraulic pump, power pack, tandem axle, 124,828 miles.

FUEL TRUCKS

2007 STERLING LT9500 VN:2FZHAZCV07AY15702 Mercedes diesel engine, 460hp, Road Ranger 8LL transmission, power steering, Hendrickson Tuftrac suspension, 46,000lb rears, double frame, Trans Tech 3 compartment - 5300 gallon aluminum tank, bottom load, vapor recovery, Scully signal, tandem axle.



2004 KENWORTH T899 VN:1NKDL09X74J054208 Cummins ISM diesel engine, 370hp, Eaton 10 speed transmission, power steering, air ride suspension, Paramount 2 compartment - 4900 gallon aluminum tank, single pump with meter, 2 hose reels, tandem axle.

NITROGEN PUMPER TRUCK



2009 PETERBILT 388 VN:1NPWLBOX59D771160 Cat C15 diesel engine, Eaton Fuller 18 speed transmission, power steering, Unibilt mid roof sleeper, Nitrogen pumping unit, CS & P nitrogen converter, 2008 TMS-2600-SS-45 tank, 20,000lb fronts, 44,000lb rears, 12350lb air lift/self steering pusher, 382in. wheel base, Air Trac suspension, air lift third axle, triaxle.

10 WINCH TRUCKS



2013 KENWORTH C500 VN:1NKCX4TX5DR336767 Cummins ISX15 diesel engine, 500hp, Eaton 18 speed transmission, power steering, 38000lb twin steering front axles, 64,000lb rears, triple frame, 30ft. bed with tail roller, Ramsey 130000lb, Ramsey 100000lb and Ramsey 50000lb winches, tandem axle, 35,682 miles.



2013 KENWORTH C500 VN:1NKCX4TX2DR336774 Cummins ISX15 diesel engine, 500hp, Eaton 18 speed transmission, power steering, 38000lb twin steering front axles, 64,000lb rears, triple frame, 30ft. bed with tail roller, Ramsey 130000lb, Ramsey 100000lb and Ramsey 50000lb winches, tandem axle, 35,725 miles.



2013 KENWORTH C500 VN:1NKCX4TX0DR336773 Cummins ISX15 diesel engine, 500hp, Eaton 18 speed transmission, power steering, 38000lb twin steering front axles, 64,000lb rears, triple frame, 30ft. bed with tail roller, Ramsey 130000lb, Ramsey 100000lb and Ramsey 50000lb winches, tandem axle, 44,913 miles.



2009 KENWORTH T800A VN:1NKDLBEX69R228103 Cat C15 diesel engine, 475hp, 18 speed transmission w/ auxiliary transmission, power steering, 20,000lb fronts, 58,000lb rears, double frame, 32ft. bed with tail roller, 30ft. gin poles, (3) planetary drive winches, tandem axle.



2007 KENWORTH C500 VN:1NKCX4TX97R194458 Cummins ISX 550 diesel engine, 550hp, Eaton 18 speed transmission, power steering, twin steering front axles, 64,000lb rears, triple frame, planetary drive rears, 28ft. bed with tail roller, 100000lb, 75000lb & 30000lb winches, tandem axle, 59,621 miles.



2013 WESTERN STAR 6900XD VN:5KKMASCK3DPBV9973 Detroit Series 60 diesel engine, 500hp, Eaton 10 speed transmission, Spicer 4 speed auxiliary transmission, power steering, 44000lb twin steering front axles, 70000lb planetary drive rear axles, TCF, 28ft. bed with tail roller, 2 hydraulic winches, no re-gen, tandem axle, 20,815 miles.



2009 MACK GU713 VN:1M2AX07C89M005030, Mack MP8 diesel engine, 505hp, Eaton 18 speed transmission, power steering, 20,000lb fronts, 64,000lb rears, triple frame, 28ft. bed with tail roller, gin poles, 100000lb, 75000lb & 30000lb winches, tandem axle, 97,269 miles.



2009 MACK GU713 VN:1M2AX07C19M005029 Mack MP8 diesel engine, 485hp, Eaton 18 speed transmission, power steering, 45000lb twin steering front axles, 65000lb rears, triple frame, 28ft. bed with tail roller, 32ft. gin poles, Braden 150000lb, Tulsa 75000lb winches, tandem axle, 97,269 miles.



2009 MACK GU713 VN:1M2AX04C69M006844 Mack MP7 diesel engine, Eaton 10 speed transmission, 4 speed auxiliary transmission, power steering, 44000lb twin steering front axles, 65000lb rears, triple frame, 25ft. bed with tail roller, 30ft. gin poles, 125000lb, 100000lb & 40000lb winches, tandem axle, 33,344 miles.



2007 INTERNATIONAL PAYSTAR 5600 VN:1HTXHSBT07J522483 Cat C13 diesel engine, 500hp, Eaton 10 speed transmission, power steering, 20,000lb fronts, 56,000lb rears, beam suspension, double frame, flatbed with tail roller, gin poles, 100000lb, 75000lb winches, tandem axle.

5 CHEMICAL ADDITIVE TRAILER



2012 SERVA VN:5JNFS4024CH001105 Cat C7 diesel engine, hydraulic & diesel tanks, Control cabin with control panel, product delivery hose reels, 10 stations, automated/metered delivery, air ride suspension, tandem axle.



2012 SERVA VN:5JNFS4028CH001107 Cat C7 diesel engine, hydraulic & diesel tanks, Control cabin with control panel, product delivery hose reels, 10 stations, automated/metered delivery, air ride suspension, tandem axle.



2012 SERVA VN:5JNFS4020CH001134, Cat C7 diesel engine, hydraulic & diesel tanks, Control cabin with control panel, product delivery hose reels, 10 stations, automated/metered delivery, air ride suspension, tandem axle.



2012 SERVA VN:5JNFS402XCH001223 Cat C7 diesel engine, hydraulic & diesel tanks, Control cabin with control panel, product delivery hose reels, 10 stations, automated/metered delivery, air ride suspension, tandem axle.



2012 SERVA VN:5JNFS4026CH001140 Cat C7 diesel engine, hydraulic & diesel tanks, Control cabin with control panel, product delivery hose reels, 10 stations, automated/metered delivery, air ride suspension, tandem axle.

HYDRATION/FRACTURING TRAILERS



2011 SERVA VN:2PLC042XCBD15289 Cat C7 diesel engine, top rear mounted operator's cabin, Gorman Rupp centrifugal mixing pump, (3) chemical injection units, (14) valve manifold, Weco valves, air ride suspension, 11R24.5 tires, tandem axle.



2011 SERVA VN:2PLC04726CBD15299 Cat C7 diesel engine, top rear mounted operator's cabin, Gorman Rupp centrifugal mixing pump, (3) chemical injection units, (14) valve manifold, Weco valves, air ride suspension, 11R24.5 tires, tandem axle.

4 BULK SAND TRAILERS



2011 APPCO SAND KING FRAC VN:1B9WS6026BT287264 Isuzu 3 cylinder diesel engine, Hydraulic & diesel tanks, hydraulic landing gear, multicompartiment proppant storage and delivery, rear discharge conveyor, tandem axle.



2011 APPCO SAND KING FRAC VN:1B9WS6025BT287434 Isuzu 3 cylinder diesel engine, Hydraulic & diesel tanks, hydraulic landing gear, multicompartiment proppant storage and delivery, rear discharge conveyor, tandem axle.



2011 APPCO SAND KING FRAC VN:1B9WS6027BT287208 Isuzu 3 cylinder diesel engine, Hydraulic & diesel tanks, hydraulic landing gear, multicompartiment proppant storage and delivery, rear discharge conveyor, tandem axle.



2011 APPCO SAND KING FRAC VN:1B9WS6020BT287261 Isuzu 3 cylinder diesel engine, Hydraulic & diesel tanks, hydraulic landing gear, multicompartiment proppant storage and delivery, rear discharge conveyor, tandem axle.

20 OIL FIELD EQUIPMENT TRAILERS



2007 KALYN SIEBERT VN:5DDKE445471002583 70 ton capacity, fixed neck, 45ft. X 102in. deck, beam suspension, (5) axles.



2007 KALYN SIEBERT VN:5DDKE454471002573 60 ton capacity, fixed neck, 45ft. X 102in. deck, air ride suspension, (4) axles.



2013 KALYN SIEBERT VN:5DDKE4249D1006215 quipped with 60 ton capacity, fixed neck, 42ft. X 102in. deck, air ride suspension, front, mid & tail rollers, 255/70R22.5 tires, (4) axles.



2011 KALYN SIEBERT VN:5DDKE4555B1005421 fixed neck, 45ft. X 108in. deck, air ride suspension, pop up deck rollers & tail rollers, (5) axles.



2009 KALYN SIEBERT VN:5DDKE455691004661 60 ton capacity, fixed neck, 45ft. X 102in. deck, air ride suspension, front, mid & tail rollers, flip neck extension, 255/70R22.5 tires, (5) axles.



2008 KALYN SIEBERT VN:6DDKE455781003632, 70 ton capacity, fixed neck, 46ft. X 102in. deck, air ride suspension, tail roller, (5) axles.



2008 KALYN SIEBERT VN:5DDKE455281003506 70 ton capacity, fixed neck, 45ft. X 102in. deck, air ride suspension, tail roller, (5) axles.



2008 KALYN SIEBERT VN:5DDKE423781003780 60 ton capacity, fixed neck, 42ft. X 102in. deck, air ride suspension, tail roller, 255/70R22.5 tires, triaxle.



2008 KALYN SIEBERT VN:5DDKE455081003505 60 ton capacity, fixed neck, 45ft. X 102in. deck, air ride suspension, front & tail rollers, 255/70R22.5 tires, (5) axles.



2013 PITTS VN:5JYLB6047DP130238 60 Ton capacity, fixed neck, 42ft. X 102in. deck, air ride suspension, front, mid & tail rollers, 255/70R22.5 tires, (4) axles.



2013 PITTS VN:5JYLB6049DP130239 60 Ton capacity, fixed neck, 42ft. X 102in. deck, air ride suspension, front, mid & tail rollers, 255/70R22.5 tires, (4) axles.



2012 ADVANCE VN:1A9SL6556CP745066 162K# GVWR, detachable neck, 48ft. X 108in. deck, air ride suspension, pop up deck rollers, tail roller, (5) axles.



2011 ADVANCE VN:1A9SL6554CP745065 154K# GVWR, detachable neck, 48ft. X 108in. deck, air ride suspension, pop up deck rollers, tail roller, (5) axles.



2011 ADVANCE VN:1A9SL6555BP745039 154K# GVWR, detachable neck, 48ft. X 108in. deck, air ride suspension, pop up deck rollers, tail roller, (5) axles.



2008 ADVANCE VN:1A9SL65528P745010 162K# GVWR, 46ft. X 108in. deck, detachable neck, air ride suspension, pop up deck rollers, tail roller, (5) axles.



2012 HOLDEN VN:12HLX5749CN602610 60 ton capacity, fixed neck, 46ft. X 102in. deck, extendable to 68ft. air ride suspension, front, mid & tail rollers, 255/70R22.5 tires, (4) axles.



2005 HOLDEN VN:1HMD64575N609672 164K# GVWR, detachable neck, 48ft. X 108in. deck, air ride suspension, pop up deck rollers, tail roller, (5) axles.



2009 NUTTALL VN:4C9DW57579A061246 70 ton capacity, 45ft. X 102in. deck, detachable neck, air ride suspension, deck rollers, tail roller, (5) axles.



2008 LOAD KING VN:5LKL5335581027211 50 ton capacity, scissor neck, 42ft. X 102in. deck, 9ft. upper deck, air ride suspension, triaxle.



2005 LOADCRAFT VN:5ABB455045B050023 164K# GVWR, detachable neck, 45ft. X 108in. deck, air ride suspension, deck rollers, tail roller, (5) axles.

9 OIL TANKER TRAILERS



2015 MAC VN:558MCCM25FK001029 9300 gallon aluminum tank, Civicon scales, level monitor, liner, air ride suspension, tandem axle.



2015 MAC VN:558MCCM29FK001020 9300 gallon aluminum tank, Civicon scales, level monitor, liner, air ride suspension, tandem axle.



2015 MAC VN:558MCCM21FK001027 9300 gallon aluminum tank, Civicon scales, level monitor, liner, air ride suspension, tandem axle.



2015 MAC VN:558MCCM27FK001033 9300 gallon aluminum tank, Civicon scales, level monitor, liner, air ride suspension, tandem axle.



2015 MAC 407 VN:58MCCM27FK001002 9300 gallon, air ride suspension, bottom load, vapor recovery, Air Weigh trailer scale, Finch level monitor, Civicon signal system, 11R22.5 tires, polished aluminum wheels, tandem axle.

AMERICA'S AUCTION COMPANY



2015 MAC 407 VN:58MCCM20FK001018, 9300 gallon, air ride suspension, bottom load, vapor recovery, Air Weigh trailer scale, Finch level monitor, Civicon signal system, 11R 22.5 tires, polished aluminum wheels, tandem axle.



2015 MAC 407 VN:58MCCM23FK001028 9300 gallon, air ride suspension, bottom load, vapor recovery, Air Weigh trailer scale, Finch level monitor, Civicon signal system, 11R22.5 tires, polished aluminum wheels, tandem axle.



2012 ELK VN:3T9NT4325C1026026 8400 gallon steel tank, Roper 5600 gear pump, air ride suspension, 11R24.5 tires, PA wheels, tandem axle.

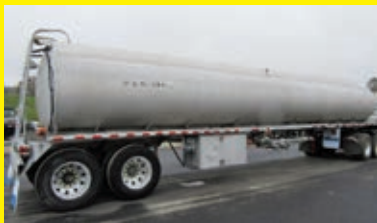


2009 DRAGON VN:1UNST50379L078146 9500 gallon aluminum tank, vapor recovery, Roper pump, air ride suspension, triaxle.

7 BULK FUEL TRAILERS



1997 HEIL VN:5HTAM4429V7H61098 9400 gallon aluminum tank, (4) compartment: 2800 G/2200 G/1800 G/2600 G, vapor recovery, Civicon monitor system, Scully signal system, bottom load, spring suspension, tandem axle.



1996 HEIL VN:5HTAB4320T7H58322 9200 gallon aluminum tank, (4) compartment: 3000 G/2200 G/1500 G/2500 G, vapor recovery, Civicon monitor system, Scully signal system, bottom load, double bulkhead between compartments, spring suspension, polished aluminum wheels, tandem axle.



1995 HEIL VN:1HLA3A7B3S7H59220 9500 gallon aluminum tank, (4) compartment: 3000 G/2000 G/1500 G/3000 G, vapor recovery, Civicon monitor system, Scully signal system, double bulkhead between #3 & #4, new spring suspension, tandem axle.



1995 HEIL VN:1HLA3A7B3S7H58990 9400 gallon aluminum tank, (5) compartment: 3100 G/1200 G/1000 G/1300 G/2800 G, vapor recovery, bottom load, Civicon monitor system, Scully signal system, double bulkhead between #4 & #5, spring suspension, 11R22.5 tires, polished aluminum wheels, tandem axle.



1994 HEIL VN:1HLA3A7BXR7H57703 9200 gallon aluminum tank, (4) compartment: 2600 G/2200 G/1500 G/2900 G, vapor recovery, bottom load, Scully signal system, spring suspension, tandem axle.



1996 CUSTOM BULK FUEL TRANSPORT TRAILER VN:1C9A1B2B4TS001201 9400 gallon aluminum tank, (2) compartment, 4500 G/4900 G, vapor recovery, Civicon monitor system, Scully signal system, spring suspension, tandem axle.



1996 HEIL VN:1HLA3A7B3S7H59220 9500 gallon, 4 compartment: 3000 G/2000 G/1500 G/3000 G, double bulkhead between #3 & #4, bottom load, vapor recovery, new spring suspension, side tray, Scully system, 11R22.5 tires, polished aluminum wheels, tandem axle.

101 WELDING ACCESSORIES



(24) CASES OF ESAB ATOM ARC 8018-B3L (6) 10 LB cans per case.



(24) BOX OF STOODY GAS SHIELDED FLUX CORE WELDING WIRE .034" diameter, 33 LBS/box.

(10) ROLL ESAB CORE BRIGHT 308L STAINLESS STEEL .045" diameter, 33 LBS/roll.

XYRON XUPER 2233N NICKEL ALLOY WELDING ROD 90000PSI tensile strength, (4) 10 LB boxes/case.

(10) CASE INWELD 347FCT STAINLESS STEEL TIG WELDING ROD 88,000 PSI tensile strength, (4) 10LB boxes/case.



(30) BOX OF ESAB 2550817123 WELDING RODS 50 LB box.

(2) CASE OF ALCOTEC 3/32IN. X 36IN. TIG WELDING RODS 60 LBS/case.





AUCTION CALENDAR

Go to WWW.LYONAUCTION.COM for START-STOP times on TIMED / VIRTUAL AUCTIONS

1. **LIVE:** Tuesday, March 30: **HAUPPAUGE, NEW YORK:** Very Large Late Model Snow & Construction Equipment(Cat), Aerials, Forklifts and Support. **HIGHLIGHTS:** (6)2019 Cat 926M, (15)2021 Cat 289D, Cat 259D Skid Steers, 2020 Cat 315FL, Cat 308E.
2. **LIVE:** Wednesday, March 31: **KNOXVILLE, TENNESSEE:** Major Job Completion of Well-Kept Cat Earthmoving Equipment, Crawler Tractors: Cat D10, Cat D9R, Cat D9N, Cat D8T, Crawler Loaders, Rubber Tired Loaders, Tractor Loader Backhoes, Skid Steers, Hydraulic Excavators: Cat 385C, Cat 350L, Motor Graders, Motor Scrapers: Cat 621E, Forklifts, Articulated Haul Trucks: (5)Cat 740, Truck Tractors, Dump Trucks, Equipment Trailers, Attachments, Support Equipment and much more.
3. **LIVE:** Thursday, April 1: **WATERTOWN, NEW YORK:** Very Large Premier Farm & Construction Equipment & Truck Auction. Late Model Farm Tractors, Ag Equipment, Construction Equipment, Midi Excavators, Skid Steers, Truck Tractors, Dump Trucks, Equipment and Walking Floor Trailers.
4. **LIVE:** Tuesday, April 6: **DALLAS (LEWISVILLE), TEXAS:** Large Crane Liquidation. (30)All Terrain, Rough Terrain, Truck Cranes, Hydraulic Crawler Cranes, Heavy Haul Truck Tractors, Service Trucks, Pickups, Detachable & Drop Deck Trailers, Boom Trucks Large Quantity Boom Sections, Hook Blocks, Balls, Telescopic Forklifts, Shop & Support Equipment.
- 5-7. **LIVE:** Thursday, April 8 through Saturday, April 10: **ATLANTIC CITY, NEW JERSEY:** Annual 3-Day Construction Equipment, Aerial Lift, Transportation, Support and Attachment Auction. The Finest Sale of Quality Equipment on the East Coast. Over 100 Late Model Hydraulic Excavators.
8. **TIMED:** Saturday, April 10 through Wednesday April 14: **BIRMINGHAM, ALABAMA:** Major Oil Field Job Completion. Everything is Late Model and in Very Good Condition.
9. **LIVE:** Thursday, April 15: **PITTSBURGH, PENNSYLVANIA:** Multi-Job Completion Auction. Late Model Cat, John Deere, Komatsu Construction Equipment Plus Aerial Lifts, Forklifts, All Types of Trucks & Trailers, Attachments.
10. **LIVE:** Friday, April 16: **N. ATTLEBOROUGH, MASSACHUSETTS:** Unbelievable! Very Large Late Model Cat Construction Equipment Auction (84)Cat Rubber Tired Loaders, (40)Cat Skid Steers, (10)Cat Excavators, Snow Accessories & Support Equipment, (25) Pickup Trucks/Plows.
11. **LIVE:** Saturday, April 17: **JAMAICA, NEW YORK:** Very Large Snow Removal, Construction Equipment, Snow Melting Machines, Truck Tractors, Equipment Trailers, Salt & Sander Trucks, Fuel Trucks, Service & Pickups, Large Quantity Rubber Tired Loaders(Cat, Michigan, Komatsu, John Deere), Large Quantity Skid Steers, Buckets, Buckets, Buckets, Sanders, Spreaders, Engines, Transmissions, Tires and more.
12. **TIMED:** Saturday, April 17 through Thursday, April 22: **MONTREAL, CANADA:** Retirement Auction. Late Model Rental Returns, Utility Equipment, Aerials, Trucks, Trailers, Support Equipment.
13. **LIVE:** Friday, April 23: **NEW MARTINSVILLE, WEST VIRGINIA:** Job Completion. Very Large Late Model Cat, Komatsu, John Deere Construction Equipment, Late Model Dump Trucks, Truck Tractors, Service Trucks, Pickup Trucks.
14. **LIVE:** Saturday, April 24: **VALLEY FORGE, PENNSYLVANIA:** Major Job Completion of Construction, Utility Equipment, Attachments, Aerials, Forklifts, Trucks and Trailers.
15. **TIMED:** Monday, April 26 through Sunday, May 2: **LAKEPORT, NEW YORK:** Estate Auction Consisting of Lawn & Garden, Landscape Equipment, Collectible Toys, Church Supplies and Small Amount of Antiques.
16. **LIVE:** Friday, April 30: **SALEM, NEW HAMPSHIRE:** Construction and Bridge Equipment, Aerial Lifts, Forklifts, Air Compressors, Trucks, Trailers, Large Amount of Accessories and Support.
17. **LIVE:** Saturday, May 1: **CLEVELAND, OHIO:** Large Job Completion Auction. Large Quantity Construction Equipment Including: Cat D10R, Cat D6RLGP, JD, 650H, Cat 950F, Takeuchi TB260, Takeuchi TB250, Takeuchi TB180, Cat 320DL, Cat 245B, (3)JD 350G, Takeuchi TL10, Takeuchi TL8, Special Wirtgen 2500, Trucks(all types), Trailers, Support, Attachments.
18. **LIVE:** Wednesday, May 5: **DALLAS (FT. WORTH), TEXAS:** Rental Fleet Construction Equipment, Trucks, Trailers, Attachments and Support.
19. **LIVE:** Friday, May 7: **DELAWARE, OHIO:** Late Model Construction, Utility Equipment, Aerials, Forklifts, Truck Tractors, Straight Frame Trucks, Pickup & Service Trucks, Support Equipment.
20. **LIVE:** Saturday, May 8: **ATHENS (KNOXVILLE), TENNESSEE:** Four Prime Commercial Properties and Construction Equipment.
21. **LIVE:** Friday, May 14: **BUFFALO, NEW YORK:** Acquisition Auction. Large and Medium Construction Equipment, Utility Equipment, Aggregate, Trucks, Trailers, Attachments and Support.
22. **LIVE:** Saturday, May 15: **PARKERSBURG, WEST VIRGINIA:** Complete Retirement Auction. Approximately 100 Antique Collectible Cars and Trucks Plus Truck Tractors and Trailers, that were used to Transport the Collectibles Properly. Small Amount of Late Model Skid Steers, Mini & Midi Excavators.
23. **LIVE:** Sunday, May 16: **CANASTOTA, NEW YORK:** Lawn & Garden & Construction Equipment Auction. Primarily Midi Sized Excavators, Skid Steers etc. Plus Quantity Compact Tractors, Landscape Equipment, Commercial & Riding Mowers, Tillers and Skid Steer Attachments.
24. **LIVE:** Friday, May 21: **RACINE, WISCONSIN:** Late Model Construction Equipment(Rentals). Dump Trucks, Truck Tractors, Pickups, Trailers, Attachments and Support.
25. **LIVE:** Saturday, May 22: **LIMESTONE, MAINE:** PHASE II. Former Loring Air Force Base. Construction Equipment, Aerials, Attachments New & Used Support, All Types of Trucks and Trailers.
26. **LIVE:** Thursday, June 10: **PASSAIC, NEW JERSEY:** Retirement, Complete Liquidation. Mack Trucks, Trailers, Support, Shop Equipment, Parts.
27. **LIVE:** Saturday, June 12: **LAS VEGAS, NEVADA:** Late Model Rental Construction, Utility Equipment, Telescopic & Warehouse Forklifts, Large Quantity Boom & Scissor Lifts, Light Plants, Generators, Welders, Air Compressors, Pickups, Trailers and Support Equipment.
28. **LIVE:** Wednesday, August 4, & **TIMED:** Thursday, August 5: **SYRACUSE (POMPEY), NEW YORK:** In Conjunction with Lee Publications & Empire State Farm Show. Late Model Agricultural & Construction Equipment, Trucks(all types), Trailers, Attachments, Large Quantity Support Equipment.
29. **LIVE:** Friday, September 10: **PITTSBURGH, PENNSYLVANIA:** Late Model Cat, John Deere, Komatsu Earthmoving Equipment, Attachments, Support, All Types of Trucks & Trailers.

NEW DATES TO BE ANNOUNCED

30. **CENTRAL CONNECTICUT:** Retirement Auction. Over 51 years in Business. Construction, Utility, Aggregate Equipment, Dump Trucks, Truck Tractors, Service & Pickups, Various Trailers, Large Quantity Attachments and Shop Equipment.
31. **NEW ENGLAND:** Retirement Auction (over 70 years of collecting only the best). One of the Finest Collections of Antique Construction Equipment: Cat, Holt, JD, IH. Ag Equipment, Truck Tractors, Dump Trucks (Everything is Beautiful and Operating), Collectible Toys, Dolls, Large Quantity of Parts. Never Before has there been a Sale Like This.
32. **LINCOLN, MAINE:** Two Major Job Completions. 1 Very Large Forestry Featuring All Types of Logging Equipment and Trucks, and 1 Large Construction Equipment Spread of Later Model Cat, Komatsu, John Deere, New Holland Earthmoving Equipment, Forklifts, Aerials, Generators, Air Compressors and more.
33. **PORTLAND (AUBURN), MAINE:** Retirement Auction. Late Model Cat, Komatsu, Case, Volvo Construction Equipment, Plus Telehandlers, Generators, Boom & Scissor Lifts, Trucks, Trailers and Support.
34. **FAYETTEVILLE, ARKANSAS:** Late Model Construction, Utility, Compact Equipment, Agricultural Tractors & Farm Implements, Large Quantity Landscape Equipment 0° Radius Movement, Utility Vehicles, 4-Wheelers and more.
35. **TORONTO, CANADA:** Late Model Rentals of Agricultural Equipment, Construction Equipment, Attachments, Tools, Support, Various Trucks and Trailers.

MAIN OFFICE

315.633.2944 • 315.633.2872 • 315.633.9544
EVENINGS: (315) 637-8912, FAX: (315) 633-8010

BRANCH OFFICES

ATLANTA, GA	770.537.7386	MOBILE, AL	251.510.1538
BRATTLEBORO, VT	802.490.7894	NASHVILLE, TN	615.922.5197
CHICAGO, IL	312.724.5474	NEW LONDON, CT	860.924.7735
COLUMBUS, OH	614.254.5596	OKLAHOMA CITY, OK	405.438.3188
DALLAS, TX	972.725.7761	PARKERSBURG, WV	304.699.3050
DENVER, CO	720.277.0263	RACINE, WI	262.886.2778
DES MOINES, IA	515.414.2868	ST. LOUIS, MO	314.570.4127
FORT WORTH, TX	817.807.2761	TAMPA, FL	813.777.3273
HARRISBURG, PA	717.836.0919	WASHINGTON, DC	202.888.6003
HOUSTON, TX	832.450.3910	MONTREAL, CA	514.949.7500
LAS VEGAS, NV	702.475.4992	OTTAWA, ON	514.916.4656

FOLLOW US:  

FINANCING AVAILABLE FOR PRE-APPROVED PURCHASERS: You must have prior written approval!

PATRIOT FINANCIAL LLC: Your one stop shop for all of your auction and equipment needs. For Immediate or pre-auction approval please call Customer Service at 866-633-6003 or you may apply on line with our secure site at www.patriotfinancialllc.com. You may also visit us at certain auctions to get your on-site approval. We do 100% financing, with no age restrictions and our minimum loan amount is \$5,000.00. We welcome new start-up business.

STREAMLINE FINANCIAL SERVICES is a nationally recognized lending specialist working with auction companies and vendors on a daily basis to assist their customers obtain financing for equipment. We offer a variety of financial solutions for light duty to heavy duty, titled equipment (trucks and trailers) to all non-titled equipment (yellow iron, aerial lifts, chippers, skid steers, etc). The representatives at Streamline Financial are experts in finding the best financial program for construction and transportation equipment. We have a solution for all levels of credit from A+ to challenged, and also offer Line of Credit and Working Capital programs to complement your businesses cash flow constraints. Please call Customer Service at 440-358-5060.

OAKMONT CAPITAL SERVICES, LLC is a fast, affordable, reputable solution to financing. Founded in 1998 by Managing Members Joe Leonard, CLFP and Megan Zoba. Oakmont Capital Services (OCS) is a direct lender, providing commercial equipment financing and working capital throughout all 50 states. The professional financing staff at OCS has the combined experience of over 250 years in the industry and specializes in both titled and non-titled equipment funding. For over 20 years, we've been helping customers secure financing while offering quick turnarounds, no down payments, application only financing, E-docs for speedy processing plus A, B, and C credit options. Call Mike Macy, Business Development Officer at 315-744-3626 for pre-approval.

SMART BUSINESS CREDIT & LEASING: For instant credit approvals, contact Customer Service at 800-798-6862, or visit our on-site trailer at select auctions. Also available is a secure online application: www.SmartBusinessCredit.com 100% financing or leasing & customized financial packages available (\$10,000 minimum).

SALES TAX: All sales are subject to sales tax.

SALES TAX EXEMPTIONS: Buyers with a VALID exemption certificate are not required to pay sales tax for equipment and miscellaneous, but MUST present a copy of their certificate at time of registration at EACH SALE.

EXPORTERS: If you take possession of your purchase in the United States, you must pay sales tax. You must provide the following in order not to be charged: Bill of Lading - All export purchases must be removed by a trucking company. The trucking company will provide a Bill of Lading with the purchases listed.

NOTE: No items will be released without this document or you may pay tax and be reimbursed once the Bill of Lading or a Dock Receipt is received.

MOTOR VEHICLES AND TRAILER EXEMPTIONS: Specific for each state. Please call office for exemption details.



7697 ROUTE 31, PO BOX 610
BRIDGEPORT, NY 13030

PRESORT
FIRST CLASS
U.S. POSTAGE
PAID
ROCHESTER, NY
PERMIT No. 944

All information contained in this brochure was derived from sources believed to be correct, but not guaranteed. We shall not be held liable for any typographical errors or inaccuracies in the content of this brochure. All announcements made day of sale supercede any printed material.



PLEASE SCAN
QR CODE
FOR UP-TO-DATE
CALENDAR AND
EQUIPMENT LISTS

DALLAS (LEWISVILLE), TEXAS
TUESDAY, APRIL 6TH AT 10:30 AM (CT)

****ONSITE/VIRTUAL LIVE AUCTION****

RETIREMENT AUCTION COMPLETE LIQUIDATION NORTH TEXAS CRANE

30 CRANES, BOOM TRUCKS, SERVICE TRUCKS, PICKUPS,
FORKLIFTS, GENERATORS, ALL TYPES OF LATE MODEL
TRUCK TRACTORS, DETACHABLE, STEP DECK & HI-FLAT
TRAILERS, QUANTITY OF BOOM & SCISSOR LIFTS,
ACCESSORIES & SHOP TOOLS

2 AUCTIONS IN 1 DAY



ATLANTIC CITY, NEW JERSEY
(AC RACE TRACK)

**THURSDAY, APRIL 8TH, FRIDAY, APRIL 9TH
AND SATURDAY, APRIL 10TH AT 9:00 AM**

****ONSITE/VIRTUAL LIVE AUCTION****

**ANNUAL 3-DAY AUCTION
LATE MODEL RENTAL FLEET
CONSTRUCTION EQUIPMENT AUCTION**
CONSTRUCTION EQUIPMENT, AERIAL LIFT,
TRANSPORTATION, SUPPORT AND ATTACHMENT
AUCTION. THE FINEST SALE OF QUALITY EQUIPMENT
ON THE EAST COAST.

HercRentals™



BIRMINGHAM (WOODLAND), ALABAMA
OPENS: SAT., APRIL 10TH AT 12:00 PM (CST)
CLOSES: WED., APRIL 14TH AT 12:00 PM (CST)

****TIMED AUCTION****

MAJOR OIL FIELD JOB COMPLETION



SPECIAL NOTE: These auctions will be a **Live, In-Person event**. Masks required. All people attending must follow CDC guidelines for social distancing and hand-washing. Thank you in advance for adhering to these requirements, we appreciate your cooperation!

315.633.2944

lyonauction.com

lyonauctionlive.com

lyonmexico.com