



**SALES MANAGERS & AUCTIONEERS**

# AUCTION CATALOG

**PARKERSBURG, WEST VIRGINIA - SATURDAY, APRIL 27<sup>TH</sup> AT 9:30 AM**



## RETIREMENT AUCTION

**100+ VINTAGE, COLLECTIBLE AUTOS AND ACCESSORIES.  
A VERY GOOD COLLECTION (90% NO RESERVE)**



**ADDRESS:** 1831 Williams Highway, Williamstown, West Virginia 26187.

**NOTE:** After 47 years, the owner of this fine collection has been told by his wife, enough is enough and will sell this fine collection. (90% of the cars sell with no reserve).

**SALE SITE PHONE:** (262) 903-6269 Chad.

**WV AUCTION LICENSE:** 2061 Jack H Lyon.

**FOLLOW US:**   

**Warranties Available On Late Model Equipment from:**



**CONTACT:** Christine Julka  
**DIRECT:** 315-256-0498  
**OFFICE:** 866-662-0995  
[www.adiagency.com](http://www.adiagency.com)

**FINANCING AVAILABLE FOR PRE-APPROVED PURCHASERS:** You must have prior written approval!

**PATRIOT FINANCIAL LLC:** Your one stop shop for all of your auction and equipment needs. For Immediate or pre-auction approval please call Customer Service at 866-633-6003 or you may apply on line with our secure site at [www.patriotfinancialllc.com](http://www.patriotfinancialllc.com). You may also visit us at certain auctions to get your on-site approval. We do 100% financing, with no age restrictions and our minimum loan amount is \$5,000.00. We welcome new start-up business.

**SMART BUSINESS CREDIT & LEASING:** For instant credit approvals, contact Customer Service at 800.798.6862, or visit our on-site trailer at select auctions. Also available is a secure online application: [www.Smartbusinesscredit.com](http://www.Smartbusinesscredit.com) 100% financing or leasing & customized financial packages available (\$10,000 minimum).

**TERMS & CONDITIONS:** "Cash or Company Check" accompanied by current "Bank Letter of Guarantee", made payable to Alex Lyon & Son. Everything Sells "AS IS, "WHERE IS." *The following charges will apply on all purchases:* (1.) For each unit \$1,001.00 and above, a 10% administration fee will be assessed when paying with cash or good check. (The standard fee of 13% will be assessed when paying with credit card); (2.) For each unit \$0- \$1,000, a 12.5% administration fee will be assessed when paying with cash or good check, and a 15.5% fee will be assessed when paying with credit card. **\*\*Please NOTE:** An additional fee may be assessed when bidding online\*\*

**SALES TAX EXEMPTIONS:** Buyers with a VALID exemption certificate are not required to pay sales tax for equipment and miscellaneous, but MUST present a copy of their certificate at time of registration at EACH SALE.

**EXPORTERS:** If you take possession of your purchase in the United States, you must pay sales tax. You must provide the following in order not to be charged:

**Bill of Lading-** All export purchases must be removed by a trucking company. The trucking company will provide a Bill of Lading with the purchases listed.

**NOTE:** No items will be released without this document or you may pay tax and be reimbursed once the Bill of Lading or a Dock Receipt is received.

**MOTOR VEHICLES AND TRAILER EXEMPTIONS:** Specific for each state. Please call office for exemption details.

**RESPONSIBLE BIDDING:** The Bidder is responsible for knowing which item he/she is bidding on. If he/she is unsure, he/she should inquire or not bid. When you become the winning bidder at auction you have effected a contract and will be expected to pay for items in which you were evidenced to be the successful bidder. Auctioneer will not honor "mistakes".

**For BID ONLINE technical assistance, call**  
**Proxibid: (855) 636-6461 or Nextlot: (919) 361-1111.**

## ALEX LYON & SON SALES MANAGERS & AUCTIONEERS, INC.

**7697 ROUTE 31, PO BOX 610, BRIDGEPORT, NY 13030 315-633-2944 FAX: 315-633-8010 LYONAUCTION.COM**

# ALEX LYON & SON AUCTION COMPANY

## TERMS & CONDITIONS

Cash or Company check accompanied by current irrevocable bank letter of credit must be payable immediately to **Alex Lyon and Son, Inc.**

Purchases must be removed from the sale site within 7 days of the sale date. Loading will be on Monday through Saturday from 8:00 AM to 4:00 PM, and if applicable, Sundays from 8:00 AM to 10:30 AM. Any equipment remaining on the grounds after 7 days will be subject to storage fees or removed at the buyers expense.

Purchases become the responsibility of and shall be and remain at the risk of the Purchaser immediately upon acceptance of his bid. It shall be the responsibility of the Purchaser to insure his purchases immediately.

No sale shall be invalidated by reason of any defect or inaccuracy in any of the lots by reason of their being incorrectly described in this listing or elsewhere and no liability shall be borne by the Auctioneers in respect of any such fault or errors. These listings have been prepared only as a guide based on information from sources generally believed to be reliable and from the Consignor but the accuracy thereof cannot be guaranteed or warranted by the Auctioneers. Bidder acknowledges that it is his responsibility to inspect all equipment and to make his own inquiries.

There shall be no guarantees or warranties, expressed or implied statutory or otherwise of any nature whatsoever. Each and every lot will be sold "as is" "where is." Specifically, but not to restrict the generality of the foregoing, the Auctioneers make no representation or warranty on any of the lots which are the subject of the auction.

Since the property sold is second-hand property, seller makes no warranty of any kind and sells the goods on an "as-is" basis, further, seller makes no warranty of any kind whatever, expressed or implied: and all implied warranties of merchantability and fitness for a particular purpose are hereby disclaimed by the seller.

All necessary documents will be mailed within 14 business days of the payment. Availability of these documents is subject to provision of the same by the Consignor.

Every person at the Auction site before, during and after the auction sale shall be deemed to be there at his own risk with notice of the condition of the premises, the activities on the premises and the conduct of third parties and the Bidder shall so advise his agents and employees.

**THIS LISTING IS ONLY A "GUIDE" AND MAY NOT BE ACCURATE IN ANY WAY. PLEASE INSPECT THE EQUIPMENT PRIOR TO BIDDING. ALL SALES ARE FINAL.**

Registered bidders hereby agree that all registration information may be shared with SmartEquip for the purposes of future service and maintenance assistance.

If a Purchaser fails to pay for any lot(s), Purchaser agrees that **Alex Lyon & Son** may, in its discretion: (1) seek specific performance from Purchaser; or (2) resell the lot(s) and recover any and all damages resulting from Purchaser's breach. If **Alex Lyon & Son** is required to take either of the actions set forth in this paragraph, Purchaser agrees that **Alex Lyon & Son** shall be entitled to recover its reasonable and necessary attorneys' fees from Purchaser. Any disputes between **Alex Lyon & Son** and Purchaser shall be governed by New York law.

NOTE: All bidders are bound by their signature on the Bidder's Registration Agreement. Please read the Terms printed on the registration card and on the paragraphs above. The Terms and Conditions are also available at [www.lyonauction.com/terms.html](http://www.lyonauction.com/terms.html).

**TAX EXEMPT ENTITIES MUST HAVE THEIR EXEMPTION # AND STATE FORM  
AT THE TIME OF SALE OR THEY WILL BE CHARGED SALES TAX.**

**ANY INDIVIDUAL FOUND TAMPERING WITH MACHINES IN THIS AUCTION  
WILL BE PROSECUTED TO THE FULLEST EXTENT OF THE LAW!**

## EVERY ITEM SELLS AS IS WHERE IS

- 91 NEW 7500 WATT GENERATOR NEW SUPPORT EQUIPMENT powered by gas engine, 13hp, equipped with 7500 watts, electric start, automatic voltage regulator, backup pull-start, hd steel frame with fully isolated motor mounts for quietness, low oil shutoff, (2) 110v, 30amp power outlets, (1) 240V NEMA L14-30R twist-lock outlet, (1) 120V NEMA L5-30R twist-lock outlet, (1) 12V 8.3amp DC outlet, wheel kit. EPA approved emissions.
- 92 NEW 7500 WATT GENERATOR NEW SUPPORT EQUIPMENT powered by gas engine, 13hp, equipped with 7500 watts, electric start, automatic voltage regulator, backup pull-start, hd steel frame with fully isolated motor mounts for quietness, low oil shutoff, (2) 110v, 30amp power outlets, (1) 240V NEMA L14-30R twist-lock outlet, (1) 120V NEMA L5-30R twist-lock outlet, (1) 12V 8.3amp DC outlet, wheel kit. EPA approved emissions.
- 93 NEW 7500 WATT GENERATOR NEW SUPPORT EQUIPMENT powered by gas engine, 13hp, equipped with 7500 watts, electric start, automatic voltage regulator, backup pull-start, hd steel frame with fully isolated motor mounts for quietness, low oil shutoff, (2) 110v, 30amp power outlets, (1) 240V NEMA L14-30R twist-lock outlet, (1) 120V NEMA L5-30R twist-lock outlet, (1) 12V 8.3amp DC outlet, wheel kit. EPA approved emissions.
- 94 NEW 7500 WATT GENERATOR NEW SUPPORT EQUIPMENT powered by gas engine, 13hp, equipped with 7500 watts, electric start, automatic voltage regulator, backup pull-start, hd steel frame with fully isolated motor mounts for quietness, low oil shutoff, (2) 110v, 30amp power outlets, (1) 240V NEMA L14-30R twist-lock outlet, (1) 120V NEMA L5-30R twist-lock outlet, (1) 12V 8.3amp DC outlet, wheel kit. EPA approved emissions.
- 95 NEW 7500 WATT GENERATOR NEW SUPPORT EQUIPMENT powered by gas engine, 13hp, equipped with 7500 watts, electric start, automatic voltage regulator, backup pull-start, hd steel frame with fully isolated motor mounts for quietness, low oil shutoff, (2) 110v, 30amp power outlets, (1) 240V NEMA L14-30R twist-lock outlet, (1) 120V NEMA L5-30R twist-lock outlet, (1) 12V 8.3amp DC outlet, wheel kit. EPA approved emissions.
- 101 2007 FORD EDGE SEL AUTOMOBILE VN:A77030 AWD, powered by gas engine, equipped with automatic transmission.
- 102 2006 JEEP GRAND CHEROKEE AUTOMOBILE VN:336506 4x4, powered by gas engine, equipped with automatic transmission.
- 103 1996 JEEP GRAND CHEROKEE LAREDO SPORT UTILITY VEHICLE VN:139075 4x4, In line 6 cylinder, automatic transmission, power steering, power brakes, power windows, power locks, cruise, tilt, a/c, 4-door.
- 104 2007 GMC YUKON DENALI AUTOMOBILE VN:306396 4x4, powered by gas engine, equipped with automatic transmission, power steering.
- 105 2001 FORD EXCURSION SPORT UTILITY VEHICLE VN:C98172 4x4, 7.3L diesel, automatic transmission, power steering, power brakes, power windows, power locks, cruise, tilt, a/c, leather, 22in. Wheels.
- 106 1986 FORD BRONCO XLT COLLECTIBLE VEHICLE VN:A23607 4x4, powered by gas engine, equipped with automatic transmission.
- 107 1995 JEEP WRANGLER AUTOMOBILE VN:265999 4x4, powered by gas engine, equipped with automatic transmission.
- 108 1989 JEEP WRANGLER COLLECTIBLE VEHICLE VN:532058 4x4, 350 Chevy engine, automatic transmission, power steering, power brakes, tilt, hard top.
- 109 2011 SUBARU FORESTER AUTOMOBILE VN:737706 AWD, powered by gas engine, equipped with automatic transmission, power steering.
- 110 2014 VOLKSWAGEN JETTA AUTOMOBILE VN:260246 powered by gas engine, equipped with automatic transmission, power steering. Sells Bill of Only.
- 111 1996 CHEVY CAPRICE LT-1 COLLECTIBLE VEHICLE VN:N/A powered by police engine, equipped with automatic transmission, power steering, power brakes, power windows, power locks, cruise, a/c, tilt, red interior.
- 112 2000 PONTIAC GRAND PRIX GTP COLLECTIBLE VEHICLE VN:326182 3.8L V6 gas super charge, automatic transmission, leather, heads up display, sun roof.
- 113 2013 DODGE RAM 1500 PICKUP TRUCK VN:574336 5.7L gas engine, automatic transmission, power steering, power brakes, power windows, power locks, cruise, tilt, a/c, 4-door, short box, 15,000 miles, NICE!
- 114 2012 FORD F150XLT PICKUP TRUCK VN:N/A 5.7L gas engine, automatic transmission, power steering, power brakes, power windows, power locks, cruise, tilt, a/c, 4-door, leather, short box.
- 115 2007 FORD F150XLT PICKUP TRUCK VN:A75582 4x4, 5.4 Triton engine, automatic transmission, power steering, power brakes, power windows, power locks, cruise, tilt, a/c, extended cab, short box, box cover.
- 116 1999 FORD F150XLT PICKUP TRUCK VN:A86031 4x4, V8 engine, automatic transmission, power steering, power brakes, power windows, power locks, cruise, tilt, a/c, extended cab, short bed, box cover, special edition 707.
- 117 1990 GMC 1500 PICKUP TRUCK VN:509844 5.7L gas engine, automatic transmission, power steering, power brakes, power windows, power locks, cruise, tilt, a/c, step side, short box.
- 118 1984 CHEVY C10 PICKUP TRUCK VN:370426 4x4, 350 Chevy engine, automatic transmission, power steering, power brakes, cruise, tilt, a/c, short box, bucket seats.
- 119 1994 CHEVY 1500 PICKUP TRUCK VN:N/A 5.7L, V8 engine, automatic transmission, power steering, a/c, power windows & locks, 8ft. Bed.
- 121 2005 GMC 3500 RAMP TRUCK COLLECTIBLE VEHICLE VN:N/A Duramax diesel engine, Allison automatic transmission, power steering, power brakes, power windows, power locks, cruise, tilt, a/c, crew cab, tool box, dual wheel single axle. Reserve.
- 122 1984 GMC 3500 CARGO VAN TRUCK VN:N/A 350 engine, automatic transmission, power steering, power brakes, a/c, 14ft. Box.



## EVERY ITEM SELLS AS IS WHERE IS

- \_\_\_\_\_ 123 1989 CHEVY GRUMMAN DELIVERY VAN VN:N/A 5.7L gas engine, automatic transmission, power steering, power brakes, aluminum body.
- \_\_\_\_\_ 125 1975 GMC ROYALE CAMPER VN:N/A powered by gas engine, equipped with automatic transmission, a/c, two real axles.
- \_\_\_\_\_ 126 SEA RAY 27FT. CABIN CRUISER BOAT VN:N/A 454 engine, equipped with a/c, sleeps 5, stove, fridge, microwave. Tandem Axle Trailer.
- \_\_\_\_\_ 127 1968 GLASTRON TRI HAUL 230V BOAT VN:N/A 6 cylinder engine, with trailer.
- \_\_\_\_\_ 143 2008 CHEVY HHR SUPER SPORT COLLECTIBLE VEHICLE VN:N/A Turbo 4 cylinder engine, automatic transmission, power steering, power brakes, power windows, cruise, tilt, a/c, leather bucket seats, sunroof, 83,000 miles.
- \_\_\_\_\_ 144 2004 CHRYSLER CROSSFIRE COLLECTIBLE VEHICLE VN:5220 V6 engine, 5 speed transmission, power steering, power brakes, power windows, power locks, cruise, tilt, a/c, leather, 2-door.
- \_\_\_\_\_ 145 2005 FORD T-BIRD COLLECTIBLE VEHICLE VN:107714 powered by gas engine, equipped with automatic transmission, power steering.
- \_\_\_\_\_ 146 1996 FORD MUSTANG COLLECTIBLE VEHICLE VN:130917 powered by gas engine, equipped with power steering, convertible.
- \_\_\_\_\_ 147 1980 CHEVY CAMARO COLLECTIBLE VEHICLE VN:N/A powered by 305 4-barrel gas engine, equipped with 4 speed transmission, power steering, power brakes, 2-door, original engine, 39,000 miles, ONE OWNER.
- \_\_\_\_\_ 148 1974 PONTIAC GTO COLLECTIBLE VEHICLE VN:N/A Original 350 engine, original automatic transmission, 78,000 miles, red
- \_\_\_\_\_ 149 1966 CHEVY NOVA II COLLECTIBLE VEHICLE VN:N/A powered by 383 stroker gas engine, equipped with automatic transmission, power steering, power brakes, 2-door, restored.
- \_\_\_\_\_ 150 HONDA GYRO S SCOOTER powered by gas engine, three wheeled.
- \_\_\_\_\_ 151 YAMAHA RAZZ SCOOTER powered by gas engine.
- \_\_\_\_\_ 152 HONDA SPREE SCOOTER powered by gas engine.
- \_\_\_\_\_ 153 CUSHMAN SCOOTER powered by gas engine, blue.
- \_\_\_\_\_ 154 CUSHMAN SCOOTER powered by gas engine, red.
- \_\_\_\_\_ 155 1937 FORD SEDAN DELIVERY COLLECTIBLE VEHICLE VN:N/A 350 Chevy engine, automatic transmission, power steering, power brakes, tilt, a/c, 3-door, matching single axle trailer. Reserve.
- \_\_\_\_\_ 156 1937 CADILLAC OPERA COUPE COLLECTIBLE VEHICLE Flat Head V8, 3 speed, 2-door.
- \_\_\_\_\_ 157 1969 CHEVY CORVETTE COLLECTIBLE VEHICLE VN:N/A Big Block V8 engine, 4 speed transmission, power steering, power brakes, tilt, convertible w/ top hard top, side pipes.
- \_\_\_\_\_ 158 1964 BUICK SKYLARK COLLECTIBLE VEHICLE VN:N/A powered by 355 wildcat gas engine, equipped with automatic transmission, power steering, power brakes, 2-door, hardtop bucket seats, original engine.
- \_\_\_\_\_ 159 1972 CHEVY CORVETTE COLLECTIBLE VEHICLE VN:N/A powered by 350 rebuilt gas engine, equipped with 4 speed transmission, power steering, power brakes, tilt, 2-door, restored.
- \_\_\_\_\_ 160 1965 CHEVY CUSTOM SHORT BED PICKUP TRUCK VN:N/A 350 Chevy engine, automatic transmission, power steering, power brakes, tilt, bed cover, 2-door.
- \_\_\_\_\_ 161 1957 STUDEBAKER STEP SIDE PICKUP TRUCK VN:N/A 350 Chevy engine, automatic transmission, power steering, power brakes, tilt, a/c, bed cover.
- \_\_\_\_\_ 162 1940 CHRYSLER LIMO COLLECTIBLE VEHICLE VN:N/A 360 Chrysler engine, automatic transmission, power steering, power brakes, cruise, tilt, a/c, backup camera, Heidts independent front suspension, divider window, only one built, 4-door.
- \_\_\_\_\_ 163 1969 CHEVY CAMARO COPO REPLICA COLLECTIBLE VEHICLE VN:N/A 427 big block 188 correct date code, Muncie m 22 4 speed correct, 12 bolt posi rearend 4.11 gears, Came from Johan Santana's collection, Basically new.
- \_\_\_\_\_ 164 1964 PONTIAC GTO COLLECTIBLE VEHICLE VN: powered by 326 gas engine, equipped with 4 speed transmission, power steering, power brakes, 2-door, tribute car.
- \_\_\_\_\_ 165 1941 CADILLAC FLEETWOOD COLLECTIBLE VEHICLE VN:N/A 454 engine, automatic transmission, power steering, power brakes, a/c, 4-door.
- \_\_\_\_\_ 166 1950 MERCURY CUSTOM COLLECTIBLE VEHICLE VN:N/A Buick 455 engine, automatic transmission, power steering, power brakes, tilt, 2-door, convertible, chopped folding top, Buick interior.
- \_\_\_\_\_ 167 1963 CHEVY CORVETTE STING RAY COLLECTIBLE VEHICLE VN:N/A Chevy 327 gas engine, 300hp, 4 speed transmission, convertible, original, 2-door.
- \_\_\_\_\_ 168 1955 CHEVY DELRAY 2-DOOR POST COLLECTIBLE VEHICLE VN:N/A LS1 Corvette V8 engine, 700R automatic transmission, power steering, power brakes, tilt, a/c, corvette suspension, leather, completely restored. Reserve.
- \_\_\_\_\_ 169 1951 MERCURY CONVERTIBLE COLLECTIBLE VEHICLE VN:N/A 350 Chevy engine, automatic transmission, power steering, power brakes, leather seats, 2-door.
- \_\_\_\_\_ 170 1928 BUICK LIMO COLLECTIBLE VEHICLE VN:N/A 454 engine, automatic transmission, power steering, power brakes, tilt, a/c, 4-door.
- \_\_\_\_\_ 171 1963 CHEVY C10 PICKUP TRUCK VN:107699 powered by 454 gas engine, equipped with automatic transmission, power steering, power brakes, step side, restored.
- \_\_\_\_\_ 172 1969 CHEVY EL CAMINO COLLECTIBLE VEHICLE VN:354644 New 368 Chevy engine, rebuilt transmission, power steering, power brakes, blue.
- \_\_\_\_\_ 173 1964 CHRYSLER CROWN IMPERIAL COLLECTIBLE VEHICLE VN:221852 413 engine, automatic transmission, power steering, power brakes, power windows, power locks, cruise, tilt, a/c, 56,000 miles, original car.
- \_\_\_\_\_ 174 1958 STUDEBAKER CHAMPION COLLECTIBLE VEHICLE VN:N/A 350 Chevy engine, 700R automatic transmission, power steering, power brakes, a/c, 2-door post, bucket seats, 20in. Wheels.

## EVERY ITEM SELLS AS IS WHERE IS

- 175 1990 CHEVY PICKUP TRUCK  
VN:109910 350 Chevy engine, automatic transmission, power steering, power brakes, power windows, power locks, cruise, tilt, a/c, 8ft. Box, custom built, bucket seats, 2-door, 22in. Wheels.
- 176 1965 FORD RANCHERO  
COLLECTIBLE VEHICLE VN:N/A 460 engine, C6 automatic transmission, bed cover.
- 177 1951 MERCURY CUSTOM  
COLLECTIBLE VEHICLE VN:N/A 350 Chevy engine, automatic transmission, power steering, power brakes, tilt, a/c, leather seats, 2-door.
- 178 1932 FORD HIGH BOY ROADSTER  
COLLECTIBLE VEHICLE VN:N/A V6 Chevy engine, 5 speed transmission, leather seats, lift off top.
- 179 1927 FORD T BUCKET  
COLLECTIBLE VEHICLE VN:N/A LS1 Corvette V8 engine, 6 speed transmission, open top, disc brakes, mag wheels.
- 180 1951 NASH RAMBLER  
COLLECTIBLE VEHICLE VN:N/A 302 engine, automatic transmission, power brakes, power windows, tilt, a/c, convertible, Mustang 2 front end, bucket seats.
- 181 1930 FORD STREET ROD PICKUP  
TRUCK VN:N/A Chevy 350 engine, automatic transmission.
- 182 1957 CHEVY SHORT BED STEP  
SIDE PICKUP TRUCK VN:116728 350 Chevy engine, 400 automatic transmission, power steering, power brakes, tilt, 2-door, 20in. Wheels.
- 183 1955 FORD VICKY COLLECTIBLE  
VEHICLE VN:N/A 302 engine, automatic transmission, power steering, power brakes, 2-door, hard top.
- 191 1956 FORD F350 ROLLBACK TRUCK  
VN:E50545 312 V8 engine, 4 speed transmission, PTO, Jerr-Dan 17AWL aluminum rollback bed, winch, dual wheel single axle.
- 192 1956 FORD F100 CUSTOM DELUXE  
PICKUP TRUCK VN:621470 312 V8 engine, C4 automatic transmission, big rear window, 2-door.
- 193 1949 CHEVY 3100 PICKUP TRUCK  
VN:115043 383 CI Stroker engine, Turbo 350 automatic transmission, 650CFM Holley 4-barrel carburetor, Trans Am 3.08 Positraction rear end, Edelbrock intake, Hedman headers, Upgraded Pulleys, Aluminum radiator w/ dual electric fans, power steering, power brakes, power windows, power seats, Mustang II front end, electric fuel pump, Hurst shifter, Oak bed, Pioneer CD sound system, Vintage air, Custom interior.
- 194 1949 CHEVY 3100 PICKUP TRUCK  
VN:PA3551 General motors 350ci crate engine, turbo 350 Chevy automatic transmission, radio, stock front suspension, rear end leaf spring w/ a Chevy Malibu rear, re-done drum brakes, all re-done suspension, stock front suspension, wood plank bed, grey cloth bucket seat w/ headrests interior, matching grey carpet, sports steering wheel, body match painted door panels, body match painted door panels & dash, floor mats, whitewall tires, moon disc hubcaps & chrome trim rings.
- 195 1953 CHEVY 5-WINDOW PICKUP  
PICKUP TRUCK VN:27753 Rebuilt Inline 235ci 6-cylinder engine, 3-speed transmission, "three on the tree" shifter, exterior solid w/ no rust issues, body is super straight w/ very nicely done matt black finish, performance tires, custom mag wheels, mainly original.
- 196 1996 BUICK ROADMASTER LIMITED  
COLLECTIBLE VEHICLE VN:410654 5.7L engine, automatic transmission, power steering, power brakes, power windows, power locks, cruise, tilt, a/c, leather seats, 4-door, 79,000 miles, one owner.
- 197 1956 LINCOLN CONTINENTAL  
COLLECTIBLE VEHICLE VN:N/A Parts Car.
- 198 1952 WILLYS AERO SEDAN  
COLLECTIBLE VEHICLE VN:N/A 350 Chevy engine, automatic transmission, power steering, bucket seats, 2-door.
- 199 1952 PLYMOUTH CRANBROOK  
COLLECTIBLE VEHICLE VN:977325 6 cylinder flathead, 3-speed transmission, factory radio & electric clock, 4-door.
- 200 1949 CHEVY SHORTBED PICKUP  
TRUCK VN:A3551
- 201 1959 FORD F100 CUSTOM PICKUP  
TRUCK VN:A14316 390ci rebuilt engine, C4 automatic transmission, Edelbrock air cleaner & Cobra valve covers, 750CFM Holley carb & Edelbrock aluminum intake, electric fuel pump & Sanderson headers & sidepipes, (2) gallon gas tanks are relocated in the frame, a/c, power steering, power brakes w/ front disc brakes, rear drums, 18-circuit electric system, chrome mag wheels w/ BF Goodrich tires.
- 202 1950 CHEVY CUSTOM PICKUP  
TRUCK VN:949191 350ci rebuilt engine, TH700R4 automatic overdrive transmission, Factory GM 10-bolt rear end, Heidt's Mustang II front end w/ manual rack & pinion steering, 4-wheel disc brakes, flowmaster mufflers, custom brown bucket seats, wood steering wheel, custom wood console, performance gauges, mag wheels, dual exhaust, chrome turndowns, sliding rear window.
- 203 1980 CHEVY EL CAMINO  
COLLECTIBLE VEHICLE VN:506527 V6 factory engine, automatic transmission, power steering, power brakes, stereo, sunroof, bedliner, factory wheels, black split-bench seat interior, factory a/c, factory stick w/ all correct hoses, lines, air cleaner, valve covers, etc.
- 204 1977 JAGUAR SEDAN COLLECTIBLE  
VEHICLE VN:N/A 350 Chevy engine, automatic transmission, power steering, power brakes, 4-door sedan, Chevy chassis, Red.
- 205 1971 LINCOLN LIMO COLLECTIBLE  
VEHICLE VN:N/A 460 Ford engine, automatic transmission, power steering, power brakes, tilt, divider window, 4-door, custom built by Coach Company w/ Princess body.
- 206 1940 CHEVY 2-DOOR SEDAN  
COLLECTIBLE VEHICLE VN:480055 350 Chevy engine, automatic transmission, power steering, power brakes, tilt, a/c, Special Deluxe.
- 207 1950 LINCOLN BABY SEDAN  
COLLECTIBLE VEHICLE VN:N/A Flatbed V8 gas engine, automatic transmission, 4-door, original engine & transmission.
- 209 1957 CADILLAC COUPE DEVILLE  
COLLECTIBLE VEHICLE VN:17072 V8 engine, automatic transmission, power steering, power brakes, 2-door.

## EVERY ITEM SELLS AS IS WHERE IS

- |  |   |   |
|--|---|---|
| <p>_____ 210 1947 FORD SEDAN DELUXE<br/>COLLECTIBLE VEHICLE VN:N/A<br/>350 Chevy engine, automatic<br/>transmission, power steering, power<br/>brakes, tilt, 2-door.</p> <p>_____ 211 1946 CHEVY PICKUP STEP SIDE<br/>PICKUP TRUCK VN:N/A 350 Chevy<br/>engine, automatic transmission,<br/>power steering, power brakes, tilt,<br/>2-door, bucket seats.</p> <p>_____ 212 1954 CHEVY 3100 STEP SIDE<br/>PICKUP TRUCK VN:N/A in-line 6<br/>cylinder, manual transmission.</p> <p>_____ 213 1956 LINCOLN CONTINENTAL MARK<br/>II COLLECTIBLE VEHICLE VN:N/A<br/>V8 engine, automatic transmission,<br/>power steering, power brakes, power<br/>windows, a/c, leather seats.</p> <p>_____ 214 1970 CHEVY CORVETTE<br/>COLLECTIBLE VEHICLE VN:N/A<br/>350 engine, 4 speed transmission,<br/>Burgundy.</p> <p>_____ 215 1987 PORSCHE 924 COLLECTIBLE<br/>VEHICLE VN:N/A gas engine, 4<br/>speed transmission, power steering,<br/>power brakes, a/c, red.</p> <p>_____ 216 1973 FORD MUSTANG<br/>COLLECTIBLE VEHICLE VN:N/A 351-<br/>2V engine, automatic transmission,<br/>power steering, power brakes, a/c,<br/>2-door, convertible.</p> <p>_____ 217 1993 FORD MUSTANG 5.0<br/>COLLECTIBLE VEHICLE VN:138798<br/>5.0 engine, 5 speed transmission,<br/>power steering, power brakes, power<br/>windows, power locks, cruise, tilt,<br/>a/c, convertible, fox body.</p> <p>_____ 218 2000 FORD MUSTANG<br/>CONVERTIBLE COLLECTIBLE<br/>VEHICLE VN:171162 6 cylinder gas<br/>engine, automatic transmission.</p> <p>_____ 227 1950 FORD CONVERTIBLE<br/>COLLECTIBLE VEHICLE VN:N/A 302<br/>engine, automatic transmission w/<br/>overdrive, power steering, power<br/>brakes, power windows, tilt, a/c,<br/>chopped folding top, 2-door.</p> <p>_____ 228 1952 CHEVY SEDAN DELIVERY<br/>COLLECTIBLE VEHICLE VN:N/A<br/>4x4, 350 Chevy engine, automatic<br/>transmission, power steering, power<br/>brakes, Blazer chassis.</p> <p>_____ 229 1973 AUSTIN MORRIS WOODY<br/>COLLECTIBLE VEHICLE VN:N/A<br/>gas engine, equipped with manual<br/>transmission, right hand drive.</p> <p>_____ 230 1949 HUDSON CLUB COUPE<br/>COLLECTIBLE VEHICLE VN:N/A<br/>6 cylinder, 3 speed transmission,<br/>2-door, blue.</p> | <p>_____ 231 1952 MERCURY 2-DOOR SEDAN<br/>COLLECTIBLE VEHICLE VN:N/A<br/>350 Chevy engine, automatic<br/>transmission, power steering, power<br/>brakes, white.</p> <p>_____ 232 1950 FORD 2-DOOR CUSTOM<br/>COLLECTIBLE VEHICLE VN:N/A<br/>Flathead V8 engine, 4 speed<br/>transmission, blue.</p> <p>_____ 233 1964 CADILLAC COUPE DEVILLE<br/>COLLECTIBLE VEHICLE VN:N/A<br/>Merlin 454 engine, 5 speed<br/>transmission, a/c, power steering,<br/>power brakes.</p> <p>_____ 234 1946 CROSLEY PICKUP TRUCK<br/>VN:N/A 4 cylinder, manual<br/>transmission, 2-door, 1 of 8 built in<br/>1946.</p> <p>_____ 235 1948 JEEP RAT ROD PICKUP TRUCK<br/>VN:N/A 350 Chevy engine, automatic<br/>transmission, power steering, power<br/>brakes, chopped top, Chevy S10<br/>chassis.</p> <p>_____ 236 1931 CHRYSLER ROADSTER<br/>HIGHBOY COLLECTIBLE VEHICLE<br/>VN:N/A Flathead 6 engine, manual<br/>transmission.</p> <p>_____ 237 1948 FORD STEP SIDE PICKUP<br/>TRUCK VN:N/A V8 flathead engine, 3<br/>speed transmission.</p> <p>_____ 238 1935 FORD COUPE COLLECTIBLE<br/>VEHICLE VN:N/A 350 Chevy engine,<br/>automatic transmission.</p> <p>_____ 239 1965 VOLVO SEDAN COLLECTIBLE<br/>VEHICLE VN:N/A 4 cylinder engine,<br/>4 speed transmission, 2-door, bucket<br/>seats.</p> <p>_____ 240 1963 VOLKSWAGEN BEETLE<br/>COLLECTIBLE VEHICLE VN:N/A<br/>4 cylinder engine, 4 speed<br/>transmission, split window<br/>conversion, 2-door, luggage rack.</p> <p>_____ 241 1963 VOLKSWAGEN BAJA BEETLE<br/>COLLECTIBLE VEHICLE VN:N/A gas<br/>engine, 4 speed transmission, slide<br/>back convertible top.</p> <p>_____ 242 1979 VOLKSWAGEN BEETLE<br/>COLLECTIBLE VEHICLE VN:N/A<br/>4 cylinder fuel injection, 4 speed<br/>transmission, convertible, 2-door.</p> <p>_____ 243 1930 FORD MODEL A SPEEDSTER<br/>COLLECTIBLE VEHICLE VN:N/A<br/>4 cylinder flathead, 3 speed<br/>transmission.</p> | <p>_____ 244 1940 FORD DELUXE 2-DOOR COUPE<br/>COLLECTIBLE VEHICLE VN:721997<br/>239ci flathead engine, 3-speed rebuilt<br/>transmission, dual spoke steering,<br/>original dash panel, gauges, original<br/>am radio, camel cloth bench seat<br/>interior, correct whitewall tires.</p> <p>_____ 245 1938 PLYMOUTH COLLECTIBLE<br/>VEHICLE VN:N/A 350 engine,<br/>automatic transmission, GM drive<br/>train, restored.</p> <p>_____ 246 1972 CHEVY CHEVELLE SS<br/>COLLECTIBLE VEHICLE VN:N/A 350<br/>engine, automatic transmission.</p> <p>_____ 247 1951 CHEVY CLUB COUPE<br/>COLLECTIBLE VEHICLE VN:N/A<br/>powered by 216 6 cylinder gas<br/>engine, equipped with 3 speed<br/>transmission, power steering, power<br/>brakes, backseat, disc brakes, 12-volt<br/>converted, ostrich &amp; alligator interior,<br/>original engine.</p> <p>_____ 248 1964 OLDSMOBILE 442<br/>COLLECTIBLE VEHICLE VN:N/A<br/>powered by 400 gas engine,<br/>equipped with 4 speed transmission,<br/>power steering, power brakes,<br/>2-door, all original but engine was<br/>installed by dealer in 1965.</p> <p>_____ 249 1966 PONTIAC GTO COLLECTIBLE<br/>VEHICLE VN:N/A powered by 455<br/>gas engine, equipped with automatic<br/>turbo 400 gas engine, equipped<br/>with power steering, power brakes,<br/>2-door.</p> <p>_____ 250 1933 TWIN COACH BUS VN:60013<br/>351 engine, automatic transmission,<br/>power steering, power brakes, tilt,<br/>a/c, econoline chassis, only 50 made.<br/>Reserve.</p> <p>_____ 255 PONTIAC SOLSTICE COUPE<br/>TRANSMISSION VN:N/A EcoTec SIDI-<br/>turbo engine, manual transmission,<br/>10,000 miles.</p> <p>_____ 256 NEW PONTIAC SOLSTICE COUPE<br/>TRANSMISSION EcoTec VVT engine,<br/>automatic transmission.</p> <p>_____ 261 1971 CHEVY C10 CUSTOM PICKUP<br/>TRUCK VN:113247 350 Chevy,<br/>automatic transmission, power<br/>steering, power brakes, short bed,<br/>2-door.</p> <p>_____ 262 1957 CHEVY CORVETTE<br/>COLLECTIBLE VEHICLE VN:N/A 350<br/>Chevy engine, 350 turbo automatic<br/>transmission, convertible hard top.</p> |
|--|---|---|



## EVERY ITEM SELLS AS IS WHERE IS

- 263 1953 CHEVY SHORT BED STEP SIDE PICKUP TRUCK VN:5658 350 Chevy engine, automatic transmission, power steering, power brakes, power windows, tilt, a/c.
- 264 1962 PONTIAC CATALINA COLLECTIBLE VEHICLE VN:N/A powered by 389 4-barrel gas engine, equipped with 3 speed transmission, power steering, power brakes, 2-door, hardtop.
- 265 1961 CHEVY IMPALA COLLECTIBLE VEHICLE VN:N/A powered by 283 4-barrel gas engine, equipped with automatic transmission, power steering, power brakes, disc brakes, bubble top, original engine, restored.
- 266 1983 CADILLAC ELDORADO COLLECTIBLE VEHICLE VN:634158 powered by gas engine, equipped with automatic transmission, power steering, power brakes, power windows & locks, cruise, tilt, 2-door, 46,759 miles.
- 267 1936 LINCOLN ZEPHYR COLLECTIBLE VEHICLE VN:N/A V12 engine, manual transmission, 4-door, original car.
- 268 1947 CADILLAC CONVERTIBLE COLLECTIBLE VEHICLE VN:N/A Chevy 355 engine, automatic transmission w/ overdrive, power steering, power brakes, power windows, tilt, a/c, leather, 2-door, complete rebuilt. Reserve.
- 269 1931 PONTIAC 4-DOOR SEDAN COLLECTIBLE VEHICLE VN:N/A Flathead 6 engine, manual transmission, rear luggage rack, dual side mount spare tires, first place winner.
- 270 1964 CHEVY CORVETTE COLLECTIBLE VEHICLE VN:N/A powered by 327 gas engine, equipped with automatic transmission, power brakes, convertible soft top, 2-door.
- 271 1964 CHEVY CHEVELLE COLLECTIBLE VEHICLE VN:165328 powered by 427 gas engine, equipped with 4 speed transmission, power steering, power brakes, 2-door, restored.
- 272 1966 CHEVY CHEVELLE SUPER SPORT COLLECTIBLE VEHICLE VN:170253 powered by 396 gas engine, equipped with automatic 400 transmission, power steering, power brakes, 2-door, restored.
- 273 1936 FORD 2-DOOR SEDAN COLLECTIBLE VEHICLE VN:N/A 350 Chevy engine, automatic transmission, power steering, power brakes, power windows, tilt, a/c, bucket leather seats, wire wheels. Reserve.
- 274 1938 CHEVY SUBURBAN COLLECTIBLE VEHICLE VN:N/A 350 Chevy engine, 700R automatic transmission, power steering, power brakes, power windows, tilt, a/c, 1946 front end, leather, 4-wheel independent suspension, 2-DVD players, 4-wheel disc brakes. Reserve.
- 275 1960 FORD THUNDERBIRD COLLECTIBLE VEHICLE VN:N/A powered by 352 gas engine, equipped with automatic transmission, power steering, power brakes, 2-door, restored, original engine.
- 276 1966 CHEVY CUSTOM 10 COLLECTIBLE VEHICLE VN:112519 388 stroker, 700R transmission, front disc brakes, 4.42 posi trac rear, bedliner.
- 277 1929 FORD WOODY 350 COLLECTIBLE VEHICLE VN:N/A Chevy 350 engine, automatic, air, custom interior.
- 278 1966 PONTIAC GTO COLLECTIBLE VEHICLE VN:N/A powered by 389 tri-power gas engine, equipped with automatic transmission, power steering, power brakes, 2-door, restored.
- 279 1971 PONTIAC GTO COLLECTIBLE VEHICLE VN:N/A powered by 350 gas engine, equipped with 3 speed transmission, power steering, power brakes, black w/ red stripe wheels, tribute car.
- 280 1966 CHEVY EL CAMINO COLLECTIBLE VEHICLE VN:N/A powered by 327 gas engine, equipped with 4 speed transmission, power steering, power brakes, 2-door, restored.
- 281 1941 CHEVY SPECIAL DELUXE CONVERTIBLE COLLECTIBLE VEHICLE VN:755811 350 Chevy engine, automatic transmission, power steering, power brakes, tilt, a/c, leather.
- 282 1939 FORD CONVERTIBLE COLLECTIBLE VEHICLE VN:HY9836 350 Chevy engine, automatic transmission, power steering, power brakes, power windows, tilt, a/c, chopped top, lift off top, bucket seats.
- 283 1940 FORD DELUXE COLLECTIBLE VEHICLE VN:N/A 350 Chevy engine, 700R automatic transmission, power steering, power brakes, power windows, tilt, a/c, convertible, leather, 2-door.
- 284 1933 PLYMOUTH 2-DOOR COUPE COLLECTIBLE VEHICLE VN:N/A 350 Chevy engine, automatic transmission, power steering, power brakes, tilt, a/c, Mustang 2 front end, disc brakes, bucket seats.
- 285 1965 SHELBY COBRA FACTORY 5 REPLICA COLLECTIBLE VEHICLE VN:N/A powered by 302 fuel injected gas engine, equipped with 5 speed transmission, power brakes, less than 400 miles.
- 286 2006 LAMBORGHINI GALLARDO COLLECTIBLE VEHICLE VN:N/A V10 5.2L engine, 6-speed transmission, leather seats, full power.
- 287 1984 JEEP WRANGLER LAREDO SPORT CJ-7 UTILITY VEHICLE VN:N/A 304V8, 4 speed trans, hard top, completely restored with frame off.
- 288 1967 FORD SHELBY GT500 COLLECTIBLE VEHICLE VN:A00341 427 Sidewinder engine, C6 automatic transmission, original interior, 27,440 miles, one owner - original title, special built for T.J. Cosby.
- 289 1964 FORD FAIRLANE THUNDERBOLT COLLECTIBLE VEHICLE 427cu.in., 4-speed, new original interior, Completely rebuilt, 49 out of 100 built.
- 290 1962 SHELBY COBRA COLLECTIBLE VEHICLE VN:CSX2032 289 HYPO, Weber carburetors, 4-speed, Originally owned by Grand Prix driver & Scarab founder Lance Reventlow, Built to factory competition specs, with unusual options, Noted in last Carrol Shelby registry. COPY OF ORIGINAL INVOICE.

EVERY ITEM SELLS AS IS WHERE IS

## LATE MODEL CONSTRUCTION EQUIPMENT AUCTION

Late Model Construction Equipment, Crawler Tractors, Hydraulic Excavators, Skid Steers, Wheel Loaders, Loader Backhoes, Truck Tractors, Dump Trucks, Lowboy Trailers & Support Equipment



TUES., APRIL 30<sup>TH</sup>  
10:30 AM

242 31 St. Rue,  
St. Zotique, QC Canada J0P 1Z0



**HIGHLIGHTS INCLUDE:** **MOTORCYCLE:** Harley Davidson FLHTC 1450, **2 CARS:** (2013)Ford Taurus, (2011)Dodge Journey, **6 PICKUP TRUCKS:** (2013)Ford F-150, (2011)Ford F-250, (2010)Ford F-150, (2010)Chevrolet Silverado, Chevrolet 2500, Dodge Ram 1500, **8 RECREATIONAL VEHICLES:** (2016)Kubota RTV 1120(unused), (2012)John Deere 825i, (2)(2009)Kubota RTV-900, (3)Kawasaki Mule 610, Argo amphibious, **6 HYDRAULIC EXCAVATORS:** 2017 & 2016 Kubota KX040-4G(600 hrs), (2016)Caterpillar 304 E2 CR(1200 hrs), (2015)Kubota KX018-4H(1200 hrs), John Deere 230C LC, John Deere 160LC, **3 DOZERS:** (2011)Cat D6K LGP (2)Cat D3C LGP, **5 SKID STEER LOADERS:** (2017)Cat 279D High Flow XPS(400 hrs), (2012)Cat 248B, (2012)Cat 242B(forks), (2)(2010)Terex PT-30 (1500 hrs), **7 RUBBER TIRED LOADERS:** Cat 926, Cat 950B, Komatsu 380, Komatsu 350, Komatsu 320, Komatsu WA 95, John Deere 644D, **LOADER BACKHOE:** (2011)John Deere 310 SJ, **3 FARM TRACTORS:** (2015)John Deere 3039R, (2015) Yanmar EX3200 TLB(300 hrs), (2013)Kubota BX25DLB, **GRADER:** John Deere 570, **STREET SWEEPER:** Johnston 4000MB, **2 PAVING MACHINES:** Ingersoll Rand PF-3120, Ingersoll Rand C-300, **2 ASPHALT ROLLERS:** Cat CB 224C, Dynapac CC-42, **ARTICULATED WATER WAGON TRUCK:** Case D330 Water Wagon 3000 gallons, **5 TRACTOR TRUCKS:** (2014)Kenworth T 800(wet kit), (2012)Kenworth T 800, (2009)Peterbilt 367(wet kit), (2013) Freightliner Cascadia, Inter 8600, **DUMP TRUCKS TRI-AXLES:** Freightliner, **2 DUMP TRUCKS:** Ford F 450, GMC Top Kick 5500, **2 CUBE TRUCKS:** (2)Ford E-450, **2 BOOM TRUCKS:** Inter 4900 Atlas boom, GMC Top Kick avec RO 6 tons crane, **2 LOWBOY:** (2014)Etnyre 55 tons detachable, (2013) Laroche 3 axes, **DROPDECK TRAILER:** (2009)Manac 48' Aluminium 2 axes, **DUMP TRAILER:** (2008)Larochelle M402, 2 axes(steel), **TRAILER:** (2016) Forest River 14' 2 axes, **5 STORAGE TRAILERS 45':** (5)Storage Trailers, **TOWER LIGHTS:** Boss H1D, **6 GEN SETS:** (2)(2011)DieselBec 10Kw, (3)(2009)Fermont 15Kw diesel 50/60Hz, **2 FORKLIFTS:** Yale ERC100HDN(10,000lbs), Teledyne Princeton D5000, **ATTACHMENTS:** Rototiller Agritec, Farmtrac Mower, Snow Blowers, Portable Sander, Bucket, Skid Steer Dozer Blade, **CONCRETE SUPPORT EQUIPMENT:** Lots of 18" & 6" Steel Sidewalk Concrete Forms, Jumping Jack Wacker, Vibrating Plates, Concrete Saws, Concrete Polishers(Helicopter), Sandblast Pot, Air Hoses, Stainless Steel Fuel Tank, **TOOLS & SUPPORT:** (7)Pressure Washer Magnum 4000(new), New 1400 R 20 XL Tires, Lights & Lighting Equipment, New Conveyor Transmissions.

Joel Gauthier: (514) 949-7500/joel@lyoncanada.com

Charles Gauthier: (514) 916-4656/charles@lyoncanada.com • Yves Beaulieu: (581) 745-5900/yves@lyoncanada.com

## AGGREGATE MATERIAL AUCTION LEASE EXPIRATION

~ Syracuse Sand & Gravel Bath Mine ~

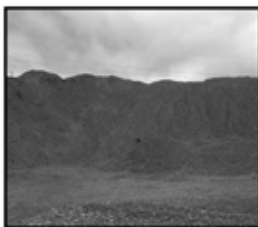


FRI., May 3<sup>RD</sup>  
9:30AM

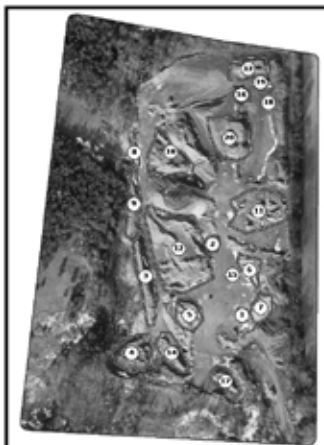
7038 Moore Road,  
Bath, NY 14810



3/4 In. Stone



Gravel Item #4



Aerial View of Piles



Sand



Oversized Stone

### HIGHLIGHTS INCLUDE:

**5 AGGREGATE MATERIALS:** 51,745 Tons Screened Gravel(#1, #2), 24,053 Tons Agricultural Bedding Sand & Ice Control Sand, 6,313 Tons Oversized Stone, 720 Tons 3/8-1.5in Stone, 180 Tons 1/2-3in Stone

**NOTE:** Due to the fact that the lease has expired, the decision has been made to sell all the material at auction.

**EXTRA NOTE:** Loading is accessible at \$0.25 per ton. All Material must be removed by May 18.

NO EXCEPTIONS.

Site Phone: (315) 633-2944

www.LYONAUCTION.com



EVERY ITEM SELLS AS IS WHERE IS

## LARGE MUNICIPAL AUCTION

Late Model Cat, John Deere, Case Construction Equipment, Aerials, Utility Equipment, Support, Attachments, Trucks & Trailers



SAT., MAY 4<sup>TH</sup>

9:30AM

10010 Main St.,

Dansville, (Rochester) NY 14437  
(Expressway Auto)



**NOTE:** As in the past, this sale will have very low-houred Construction Equipment, & Vehicles that are the finest.

**HIGHLIGHTS INCLUDE:** 3 RUBBER TIRED LOADERS: (2)2017 Case 521F, Hyundai HL750, INTEGRATED TOOL CARRIER: 2009 JCB 416HT, CRAWLER TRACTOR: 2018 JD 450K(400hrs.), HYDRAULIC EXCAVATOR: 2017 Cat 320FL, 2 TRACTOR LOADER BACKHOES: (2)2018 Case 580 Super N(loader 4x4), 2 VIBRATORY ROLLERS: 2018 Dynapac CA3500D, Bomag BW213D, 2 RUBBER TRACKED SKID STEERS: (2)2018 Case TR340, 6 SKID STEERS: (4)2018 Case SV280, (2)Cat 262D, 2 TRACTOR LOADERS: (2)2017 NH Workmaster-60(4x4), 2 TELESCOPIC FORKLIFTS: 2012 Cat 1255C, 2014 JCB 510-56, 4 TRUCK TRACTORS: (4)2015 Mack CXU613(t/a, 46R), PICKUP TRUCK: 2014 Ford F150(4x4), 5 UTILITY VEHICLES: (3)2014-2013 JD XUV825i(4x4), 2013 JD 825M(4x4), 31 PALLETS OF STONE, 4 PRESSURE WASHERS: (4)New Easy Kleen Magnum Gold, ATTACHMENTS: (2)Skid Steer: (2)JBX 4000 48in. Forks, 57 NEW SUPPORT EQUIPMENT: (8)7500 Watt Generators, (3)Mustang LF88 Plate Compactor, (4)Mustang MP4800 2in. Sub Pump, (2)Mustang CV3500 Concrete Vibrator, (2)Huskie B65 Electric Demo Hammer, (2)Huskie 11218SDS Hammer Drill, (8)3-pc. 14in. Premium Diamond Blades, (8)25ft., 800Amp Extra HD Booster Cable, (4)Auto Darkening Welding Helmet, (3)1/2in. Drive Air Impact Wrench Kit, (2)Stiff Neck Pintle Hitches, (6)2in.x50ft. Discharge Water Hose, (2)New 4pk. 10,000lb. Ratchet Cargo Straps, (3)6-pk 14in. Abrasive Blades, SUPPORT EQUIPMENT: 36 Volt Industrial Battery Charger.

Site Phone: (585) 335-6071 Expressway Auto (Kyle/Lindsey)

In Conjunction With Expressway Auto Auction, Inc.

## 2 AUCTIONS IN 1 DAY THE VERY BEST EQUIPMENT (New & Like New) ANNUAL LAWN & GARDEN AUCTION DEALER INVENTORY REDUCTION

Compact Tractor, Tractor Loaders, Commercial Mowers,  
Light Construction Equipment, Skid Steers, Mini Excavators,  
Utility Vehicles, Attachments, Support Equipment



SUN., MAY 5<sup>TH</sup>

11:00AM

601 N. Peterboro St.,  
Canastota, NY 13032



**HIGHLIGHTS INCLUDE:** 38 COMMERCIAL MOWERS: Kubota ZD1211, Kubota F3060(4x4), (2)Kubota Z725, (4)Unused Kubota Z724, (2)Ferris IS3200, Ferris IS3100, Ferris Z2, (3)Unused Ferris IS2100, (2)Unused Ferris FW35K, Unused Ferris FW25K, Unused Ferris IS600, Ferris H2228B, (3)Ferris H2227B, (2)Ferris H2224K, Ferris H2220K, Ferris Commercial, (2)Unused Cub Cadet Pro Z 760, Unused Cub Cadet 554 Pro Z, (2)2018 JD Z915E, (2)2018 JD Z535R, (2)2017 JD Z535M, 2018 JD WHP52A, Jacobsen 628D(4x4), 4 LAWN & GARDEN TRACTORS: (3)2018 JD X330, Kubota GR2020, 16 TRACTOR LOADERS: Unused NH Powerstar 75, (3)2017 NH Workmaster-60(4x4), (2)Unused NH Workmaster-25S(4x4), Kubota M6800(4x4), Kubota M5700(4x4), Kubota L3901(4x4), Unused Kubota 3350(4x4), Kubota L3301(4x4), Kubota BX1860(4x4), 2010 JD 4310(4x4), JD 3032(4x4), Massey Ferguson 1635(4x4), 7 RUBBER TRACKED SKID STEERS: (2)2018 Case TR340, (3)2016 Wacker Neuson ST45, Cat 277B, Kubota SVL95-2, 17 SKID STEERS: Unused NH L234, Unused NH L228, (3)Unused NH L218, NH LS180, NH LX885, (4)2018 Case SV280, 2016 Case SR210, 2017-2016 Bobcat S530, 2016 Wacker Neuson SW28, 2011 Cat 236B3, 2016 Cat 226B3, 5 RUBBER TIRED LOADERS: (2)2018 Cat 906M, 2017 Case 521F, Unused Case 321F, Coyote 86E, 9 HYDRAULIC EXCAVATORS: 2017 Doosan DX85R-3, 2013 Bobcat E85, 2013 Bobcat E26, Bobcat 435, (2)2013 Takeuchi TB285, 2013 Takeuchi TB235, Komatsu PC160LC-7, 2009 Komatsu PC45MR, RUBBER TIRED EXCAVATOR: Gradall 880C STUMP SHEAR: New Bodine T1-200 Razor, 5 TRACTOR LOADER BACKHOES: 2012 JD 1025R, 2015-2014 Kubota B26TLB, Kubota BX24, NH TC33D, 2 TELESCOPIC FORKLIFTS: 2014 Bobcat T40180(4x4), Ingersoll Rand(9,000lb.), 2 BOOM LIFTS: Demo Haulotte H135(4x4), Genie S40(4x4), 7 SCISSOR LIFTS: 2011 JLG 2646ES, Skyjack SJIII4626, (2)2008 Skyjack SJ3226, Skyjack SJIII3226, 2012 Genie AWP25, 2010 Genie GS2032, 2 GENERATORS: Multiquip DCA45, 2014 Magnum MMG45, WELDER: Lincoln Ideal Arc 250, 2 DUMP TRUCKS: 2012 Ford F750(22,000mi.), 2011 Ford F750(16,000mi.), VAN: 2002 Ford E250, PICKUP TRUCK: 2008 Ford F250(4x4), 14 TAGALONG TRAILERS: (12)Delta 27TB(t/a, tilt), 24ft.x82in. 5-ton(t/a), 16ft.x82in.(t/a), 4 DUMP TRAILERS: New Hawke 10-ton(6x12, t/a), New Hawke 7-ton(5x8, t/a), New Taylor(t/a), TC(7x14, t/a), VAN TRAILER: Great Dane 48ft.(t/a), 16 UTILITY VEHICLES: (2)2013 JD 855D(4x4), 2018 JD 835M(4x4), 2016-2015-(2)2014 JD XUV825i(4x4), 2013 JD 825(4x4), (2)2018 JD 590M(4x4), 2018 JD 590E(4x4), (2)JD 560E(4x4), Kubota RTV1100(4x4), (2)Kubota RTV900(4x4), 2 RECREATIONAL VEHICLES: (2)Bombardier SPX Jet Ski, UTILITY TRAILER: Dual Jet Ski Trailer, 2 SERVICE BODIES: Reading Classic II, Reading Enclosed, 2 EQUIPMENT PARTS, ENGINES, 3 TRUCK PARTS & ACCESSORIES, 2 STORAGE BUILDINGS, 18 PALLETS OF STONE, 4 PRESSURE WASHERS: (4)New Easy Kleen Magnum Gold, 2 EXCAVATOR BUCKETS, 39 ATTACHMENTS: (33)Skid Steer, 68 NEW SUPPORT EQUIPMENT.

Site Phone: (315) 633-2944

AMERICA'S AUCTION COMPANY

**EVERY ITEM SELLS AS IS WHERE IS**



## Offering Extended Warranties FOR USED EQUIPMENT

### Available Options

- Powertrain
- Powertrain+ Hydraulics



Visit **[adiagency.com/lyon-auction](http://adiagency.com/lyon-auction)** to  
request a quote on your used equipment

**(866) 662-0995**



# TWEET US @LYONAUCTION AND FIND US ON FACEBOOK TO GAIN ACCESS TO THE LYON'S DEN!



- Up-To-Date Auction Calendar • Up-To-Date Equipment Lists • Catalog & Color Brochure Deadlines •
- Auction Results • What Equipment is Hot Right Now • Informative Auction & Equipment Details •
- Assistance in Locating the Equipment You Have Been Searching For •
- Questions about Auctions? We have Quick Answers! •

## Lyon Live

Go to the iTunes App Store and search **Lyon Live** to download the latest version of our app for iPad or iPhone to be ready to bid at our next auction!

This convenient system allows you to use your current online bidder information and includes all of the easy-to-use features of the existing platform.





## ALL AUCTIONS WILL BE AVAILABLE TO BID ONLINE

1. Tuesday, April 30: **MONTREAL, CANADA:** Late Model Rental Returns of Construction, Utility Compact Equipment, Attachments, Trucks, Trailers, Support.

2. Friday, May 3: **BATH, NEW YORK:** Aggregate Material Auction. Over 80,000-tons of the following material to be sold in various increments. ITEM 4: 50,000-tons+, ICE CONTROL SAND: 20,000-tons+, COBBLESTONES & ROUNDS: 6,300-tons+, #2 STONE: 1,000-tons+.

3. Saturday, May 4: **DANSVILLE, NEW YORK:** Large Municipal Auction of Super Late Model Construction Equipment, Aerials, Utility Equipment, Support, Attachments, Trucks & Trailers. **HIGHLIGHTS:** Cat, John Deere, Case.

4. Sunday, May 5: **CANASTOTA, NEW YORK:** Annual Lawn & Garden Auction. Compact Tractor, Tractor Loaders, Light Construction Equipment, Attachments, Support Equipment.

5. Wednesday, May 8: **PAWLET, VERMONT:** Retirement Auction. Complete Liquidation. (30 years in business) Construction Equipment, Primarily Cat, Aggregate Equipment, Concrete Batch Plants, Concrete Trucks, Dumps, Utility, Pickup Trucks, Equipment and Dump Trailers, Tagalongs, Large Amount of Good Support Equipment.

6. Thursday, May 9: **DETROIT MICHIGAN:** Late Model Aggregate, Construction Equipment, Aerials, Trucks, Trailers, Support Equipment.

7-8. Friday, May 10, Saturday May 11: **SACRAMENTO, CALIFORNIA:** 2-Day Auction. Very Late & Great Model Construction Equipment, Aerials, Trucks, Trailers, Plus Large Amount of Municipal Equipment and Vehicles Including Dump Trucks, Water Trucks, Truck Tractors, Pickups, SUVs, Cars, Trailers.

9. Wednesday, May 15: **DALLAS (FT. WORTH), TEXAS:** Late Model John Deere, Cat, Komatsu, Case Rental Fleet Construction & Utility Equipment, Aerial Lifts, Forklifts, Truck Tractors, Dump Trucks, Equipment Trailers, Attachments & Support.

10. Saturday, May 18: **NORTH HAVEN, CONNECTICUT:** I-84 Project Major Job Completion Auction Featuring Very Late Model Cat, Komatsu Construction Equipment, Paving Equipment, Cranes, Truck Tractors, Dump Trucks, Service Trucks, Pickups, Equipment & Dump Trailers, Tagalongs, Very Large Quantity of Accessories, Support Equipment.

11. Sunday, May 19: **SYRACUSE (CENTRAL SQUARE), NEW YORK:** Large Office Building, Large Equipment Shop, Support Equipment. Very Nice and Ready to Go.

12. Tuesday, May 21: **ORLANDO (KISSIMEE), FLORIDA:** Large Rental Return Auction. **HIGHLIGHTS:** Construction Equipment, Forklifts, Aerial Lifts, Attachments, Support, Trucks, Trailers, Tagalongs and more.

13. Saturday, May 25: **TORONTO (ONTARIO), CANADA:** Major, Major Late Model Rental Return Auction. Equipment Primarily from one of the Premier Rental Companies of North America.

14. Thursday, May 30: **PORTLAND, MAINE:** Large Aggregate & Construction Equipment Auction. Crushers, Screening Plants, Radial Stackers, Conveyors All Types of Late Model Construction Equipment, Large Quantity Support.

15. Friday, May 31: **PARKERSBURG, WEST VIRGINIA:** Very Special Sale. Late, Late Model Cat, Komatsu, John Deere, Construction Equipment, Forklifts, Dump Trucks, Truck Tractors, Service Trucks, Pickups, Attachments (The Best).

16. Saturday, June 1: **MANCHESTER, VERMONT:** Complete Liquidation. Late Model Cat, John Deere, Hitachi, Volvo Construction Equipment, Equipment & Dump Trailers, Freightliner, Kenworth, Peterbilt, Volvo Truck Tractors & Dump Trucks, Chevy and Ford Service, Utility Trucks, Pickups, GMC, Ford, Plus Attachments and Support (Everything is very clean).

17. Thursday, June 6: **NEWARK, NEW JERSEY:** Complete Liquidation Retirement Auction. Late Model Light Construction & Landscape Equipment, Skid Steers, Tractor Loaders, Dump Trucks, Pickups, Tagalongs, Large Quantity Steel Plates, Scaffold, Symon Forms, All Types Concrete Equipment and Support.

18. Saturday, June 8: **LAS VEGAS, NEVADA:** Very Late Model Rental Construction Equipment Auction. Trucks, Trailers, Large Quantity Booms, Scissor Lifts, Telescopic Forklifts, Hydraulic Excavators, Tractor Loader Backhoes, Trucks, Trailers, Attachments & Large Quantity Support Equipment.

19. Saturday, June 15: **ATLANTIC CITY, NEW JERSEY:** Large Rental Fleet Equipment Auction. Very Late Model Construction Equipment, Aerial Lifts, Forklifts, Air Compressors, Welders, Generators, Truck Tractors, Dump Trucks, Water & Service Trucks, Pickups, SUVs, All Types of Equipment Trailers, Attachments and Support.

20. Wednesday, June 19: **HOUSTON, TEXAS:** RENTALS, RENTALS. Late Model Rental Returns. Earthmoving Equipment, Aerials, Forklifts, Skid Steers, Cranes, Truck Tractors, Dump Trucks, Trailers of Various Types, Attachments, Support.

21. Thursday, June 20: **HOUSTON, TEXAS:** Major Job Completion. Primarily Late Model Case Earthmoving Equipment, Primarily Mack & Peterbilt Dump Trucks, Truck Tractors, Trailers, Attachments, Support.

22. Saturday, June 22: **PITTSFIELD (DALTON), MASSACHUSETTS:** Major Job Completion Featuring Construction Equipment, Articulated Haul Trucks, Forklifts, Truck Tractors, Dump Trucks, Service & Utility Trucks, Pickups, All Types of Trailers, Concrete Items, Support and Attachments.

23. Saturday, June 28: **BOSTON, MASSACHUSETTS:** Late Model Cat, John Deere Construction Equipment, Large Quantity Various Types of Trucks, Trailers, Attachments and More.

24. Saturday, July 13: **CANASTOTA (SYRACUSE), NEW YORK:** In Conjunction with The Famous Alex Lyon & Son Haycamp & Barbecue. The Fanciest Late Model Construction Equipment, Aerial Lifts, Telescopes, Attachments, Support, Truck Tractors, Dump Trucks, All Types of Trailers.

25. Saturday, September 7: **ALBANY, NEW YORK:** Very Large Late Model Job Completion Auction. Cat, Komatsu Earthmoving and Highway Equipment, Articulated Haul Truck, Forklifts, Dump Trucks, Truck Tractors, Service Trucks, Pickups, Various Trailers, Support & Accessories, Concrete Attachments.

26. DTBA: **CLEVELAND, OHIO:** Construction, Aggregate, Recycling Equipment, Trucks, Trailers, Large Quantity Support and Attachments.

27. DTBA: **MANCHESTER, NEW HAMPSHIRE:** Rental Acquisition Auction of Late Model Rental Fleet Utility Equipment, Support, Attachments.

### MAIN OFFICE

315.633.2944 • 315.633.2872 • 315.633.9544 • EVENINGS: 315.637.8912, FAX: 315.633.8010

### BRANCH OFFICES

ATLANTA, GA  
BRATTLEBORO, VT  
CHICAGO, IL  
COLUMBUS, OH  
DALLAS, TX  
DENVER, CO  
DES MOINES, IA  
FORT WORTH, TX  
HARRISBURG, PA

770.537.7386  
802.490.7894  
312.724.5474  
614.254.5596  
972.725.7761  
515.414.2868  
720.277.0263  
817.807.2761  
717.836.0919

HOUSTON, TX  
LAS VEGAS, NV  
MOBILE, AL  
NASHVILLE, TN  
NEW LONDON, CT  
OKLAHOMA CITY, OK  
PARKERSBURG, WV  
RACINE, WI  
ST. LOUIS, MO

832.450.3910  
702.475.4992  
251.510.1538  
615.922.5197  
860.924.7735  
405.438.3188  
304.699.3050  
262.886.2778  
314.570.4127

TAMPA, FL  
WASHINGTON, DC  
MONTREAL, CA  
OTTAWA, ON

813.777.3273  
202.888.6003  
514.949.7500  
514.916.4656

LYONAUCTION.COM  
LYONAUCTIONLIVE.COM