



SALES MANAGERS & AUCTIONEERS

**BIG ENOUGH FOR
THE INDUSTRY LEADERS,
YET PERSONAL ENOUGH
FOR AMERICA'S FARMER.**

**AMERICA'S
AUCTION COMPANY**

ATLANTIC CITY, NEW JERSEY

****TIMED AUCTION****

SUPPORT EQUIPMENT, ATTACHMENTS,
STORAGE CONTAINERS & BUILDINGS AND MORE...

SATURDAY, SEPT. 19TH AT 8:00 AM - CLOSES SATURDAY, SEPT. 26TH AT 5:00 PM

****ONSITE/VIRTUAL LIVE AUCTION****

SATURDAY, SEPT. 26TH AT 9:00 AM

LATE MODEL RENTAL FLEET CONSTRUCTION EQUIPMENT AUCTION

VERY LATE MODEL RENTAL FLEET
CONSTRUCTION, UTILITY EQUIPMENT,
AERIALS, FORKLIFTS,
TRUCKS, TRAILERS



HercRentals™



SPECIAL NOTE: This part of the auction will be a **Live, In-Person event**. Masks required. All people attending must follow CDC guidelines for social distancing and hand-washing. Thank you in advance for adhering to these requirements, we appreciate your cooperation!

SAN ANGELO, TEXAS - TUESDAY, SEPTEMBER 29TH AT 9:30 AM

****ONSITE/VIRTUAL LIVE AUCTION****

RENTALS RENTALS RENTALS LATE MODEL CONSTRUCTION EQUIPMENT AUCTION

LATE MODEL CAT CONSTRUCTION & UTILITY EQUIPMENT, BOOMS & SCISSORS,
TELESCOPIC FORKLIFTS, AERIALS, TRUCKS, TRAILERS, ATTACHMENTS



SPECIAL NOTE: This part of the auction will be a **Live, In-Person event**. Masks required. All people attending must follow CDC guidelines for social distancing and hand-washing. Thank you in advance for adhering to these requirements, we appreciate your cooperation!



ALEX LYON & SON SALES MANAGERS & AUCTIONEERS, INC.

2020

7697 ROUTE 31, PO BOX 610, BRIDGEPORT, NY 13030 315-633-2944 FAX: 315-633-8010 LYONAUCTION.COM

****TIMED AUCTION****

Please feel free to preview any of our Virtual Live Auction sale sites 5 days before auction day!

ATLANTIC CITY, NEW JERSEY

SATURDAY, SEPT. 19TH AT 8:00 AM - CLOSSES SATURDAY, SEPT. 26TH AT 5:00 PM

ADDRESS: 4501 Leipzig Ave, Mays Landing, New Jersey 08330. **SALE SITE PHONE:** (609) 204-3189 Jay. **TERMS & CONDITIONS:** "Cash or Company Check" accompanied by current "Bank Letter of Guarantee", made payable to Alex Lyon & Son. Everything Sells "AS IS, "WHERE IS." *The following charges will apply on all purchases:* (1.) For each unit \$35,001.00 and above, a 5.95% administration fee will be assessed when paying with cash or good check. (The standard fee of 8.95% will be assessed when paying with credit card); and (2.) For each unit \$1,001- \$35,000, a 10% administration fee will be assessed when paying with cash or good check, and a 13% fee will be assessed when paying with credit card. (3.) For each unit \$0- \$1,000, a 12.5% administration fee will be assessed when paying with cash or good check, and a 15.5% fee will be assessed when paying with credit card. ****ONLINE BIDDING: An additional fee of 2.5%, cap of \$700 for each piece.****



FOR BID ONLINE TECHNICAL ASSISTANCE CALL
Proxibid: (855) 636-6461
Nextlot: (919) 361-1111

GROUND HEATERS

2015 HEAT KING HK300 SN:HK14130 5000-6000 Sq Ft.
 2014 HEAT KING HK300 SN:HK14111 5000-6000 Sq Ft.

42 HEATING EQUIPMENT

(3)2014 ALLMAND MH1000 1 MILLION BTU HEATER diesel engine, trailer mounted.
 (2)2012 ALLMAND MH1000 1 MILLION BTU HEATER diesel engine, trailer mounted.
 2015 HEAT WAGON VG1000 1 MILLION BTU HEATER SN:M6432 diesel engine, skid mounted.
 2011 HEAT WAGON VF900C IDF 1 MILLION BTU HEATER SN:53200233 diesel engine, trailer mounted.
 (12)2014 WACKER HI770XHD 750K BTU HEATER diesel engine.
 2013 WACKER HI770XHD 750K BTU HEATER SN:20145035 diesel powered.
 (2)2012 WACKER HI770XHD 750K BTU HEATER diesel powered.
 (2)2013 FLAGRO FVO-1000TR 750K BTU HEATER diesel powered.
 (10)2012 FLAGRO FVO-1000TR 750K BTU HEATER diesel powered.
 2014 LB WHITE K210 200K BTU HEATER SN:1156004700* kerosene powered.
PALLET OF SPACE HEATERS
 2014 ALLMAND MH1000 1 MILLION BTU SN:0138MXH15 trailer mounted.

3 AIR CONDITIONING UNITS

2015 DENSO CLASSIC PLUS 14 10-14K BTU 1.2 TON 110V SN:4150954140
 2014 MOVIN COOL CLASSIC PLUS 14 10-14K BTU 1.2 TON 110V SN:0613-2166-140
 2012 MOVIN COOL CLASSIC 10 14 10-14K BTU 1.2 TON 110V SN:06110086C10

TRENCHER

2012 DITCH WITCH RT12 SN:CMWRT12XAC0001749 gas engine.

20 LIGHT PLANTS

2015 MAGNUM PRO MLT5200 SN:131451 diesel engine, 4-1,000 watt lightbulbs, 6KW, trailer mounted.
 2012 MAGNUM PRO MLT5200 SN:1218397 diesel engine, 4-1,000 watt lightbulbs, 6KW, trailer mounted.
 2014 MAGNUM PRO MLT4200 SN:1307576 diesel engine, 4-1,000 watt lightbulbs, 6KW, trailer mounted.
 2013 MAGNUM PRO MLT4150 SN:1301120 diesel engine, 4-1,000 watt lightbulbs, 6KW, trailer mounted.
 2012 MAGNUM PRO MLT4150 SN:1203265 diesel engine, 4-1,000 watt lightbulbs, 6KW, trailer mounted.

(6)2013 MAGNUM PRO MLT3060 diesel engine, 4-1,000 watt lightbulbs, 6KW, trailer mounted.
 (4)2012 MAGNUM PRO MLT3060 diesel engine, 4-1,000 watt lightbulbs, 6KW, trailer mounted.
 2014 MULTIQUIP LT-12D SN:35056 diesel engine, 4-1,000 watt lightbulbs, 6KW, trailer mounted.
 2012 MULTIQUIP LT-12D SN:909789 diesel engine, 4-1,000 watt lightbulbs, 6KW, trailer mounted.
 2014 WACKER LTN6 SN:20278424 diesel engine, 4-1,000 watt lightbulbs, 6KW, trailer mounted.
 2012 PROGRESS SLT800(HVR-N) SN:1P9B71316CR661245 solar powered, 4-1,000 watt lightbulbs, trailer mounted.
 2007 ALLMAND NITE LITE PRO SN:0036PRO08 diesel engine, 4-1,000 watt lightbulbs, 6KW, trailer mounted.

CONCRETE EQUIPMENT

2017 MULTIQUIP MC94PH8 CONCRETE MIXER SN:J1652726 gas engine, 9in. Cubic foot capacity, trailer mounted.
 2017 MULTIQUIP MC64PH8 CONCRETE MIXER SN:B1751011 gas engine, 6in. Cubic foot capacity, trailer mounted.

3 CONCRETE FORMS

800LF OF 6IN. X 10IN. X 10FT. CONCRETE ROAD FORMS
 PALLET FULL OF STEEL CURB FORMING FORMS & PINS
 3X3 SYMON TYPE 250pcs

4 UTILITY VEHICLES

2015 EZ-GO 1600XD4 SN:RY8100054 4x4, diesel engine, EROPS, 4-seater, utility body.
 2015 EZ-GO 1600XD4 SN:SY8100049 4x4, diesel engine, EROPS, 4-seater, utility body.
 2015 EZ-GO 1600XD SN:RZ9500041 4x4, diesel engine, EROPS, utility body.
 2014 EZ-GO 1600XD SN:PZ9400221 4x4, diesel engine, EROPS, utility body.

SNOW EQUIPMENT

2014 FISHER 10FT. PLOW VN:14101720259129300

WATER TANK

1000 GALLON POLY

TRUCK PARTS & ACCESSORIES

2005 READING PICKUP TRUCK CAP

TIRES, NEW & USED

(4) LOW BOY TIRES (4) LOW BOY TIRES

3 MULTI-USE CONTAINERS

(3) NEW 40FT. HIGH CUBE CONTAINER Details: Four Side Open Door, one end door, lock box, side forklift pockets.

10 CONTAINERS

(4) 40FT.
 (2) NEW 9FT. With 1 Door & 1 Window.
 (2) NEW 8FT. With 1 Door & 1 Window.
 NEW 7FT. With 1 Door & 1 Window.

MOBILE HOUSE

NEW BASTONE 20FT.

4 PORTABLE BATHROOM STATIONS

(2) NEW BASTONE 110V PORTABLE TOILETS W/ SHOWER
 (2) NEW BASTONE 110V PORTABLE TOILET W/ DOUBLE STALL

3 STONE BOXES

NEW STEELMAN 12 YARD
 NEW STEELMAN 9 YARD
 NEW STEELMAN 7 YARD

3 HYDRAULIC HAMMERS

2014 ATLAS COPCO MB1500 SN:DEQ132192
 2015 ATLAS COPCO EC135 SN:DEQ141892
 2013 STANLEY MBX138 SN:12A12G081

3 RUBBER TIRED LOADER ATTACHMENTS

2013 ARROWMASTER 96IN. GP BUCKET SN:L15475
 2011 JRB PIPE FORKS SN:1111AKR18822
 2011 JRB PIPE FORKS SN:1111AKR18823

TELESCOPIC FORKLIFT ATTACHMENT

2012 ACS 6FT. PIPE FORKS SN:59435

26 SKID STEER ATTACHMENTS

2016 FFC ROCKHOUND SN:1620068
 (3) NEW 90IN. BUCKET
 (2) NEW 84IN. FORK EXTENSION
 (2) NEW 3/4 CUBIC YARD CONCRETE PLACEMENT BUCKET
 (16) NEW ATTACH FRAME
 (2) NEW JBX 4000 48IN. FORKS

6 SCRAP RECYCLING EQUIPMENT

NEW 2 CUBIC YARD SELF DUMPING HOPPER
 (2) NEW 1.75 CUBIC YARD SELF DUMPING HOPPER
 NEW 1.75 YARD HD TRASH HOPPER
 (2) NEW GREATBEAR 1 YARD SELF DUMPING HOPPER

8 STORAGE BUILDINGS

(2) NEW GOLDEN MOUNT 30FT. X 65FT. X 15FT. Snow Rating Test Report;SGS fabric Certificate, Dome roof frame, snow rating:180kg.
 NEW GOLDEN MOUNT 40FT. X 20FT. Snow Rating Test Report;SGS fabric Certificate, PE fabric galvanized tube,UV-resistance & fire- retardant.
 (3) NEW GOLDEN MOUNT 20FT. X 30FT. X 12FT. Snow Rating Test Report;SGS fabric Certificate, Peak roof frame, snow rating:200kg.
 (2) NEW GOLDEN MOUNT 20FT. X 20FT. Snow Rating Test Report;SGS fabric Certificate, PE fabric galvanized tube,UV-resistance & fire- retardant.

PLOWS AND SNOW BLOWER

NEW 68IN. SNOW BLOWER

44 PALLETS OF STONES

(44) NEW PALLET OF ASSORTED PA STONES

JEWELRY

3.50 CT ROUND CUSHION HALO SOLITAIRE DIAMOND RING D/S11 set in 14K white gold, 2.25CT center stone, 1.25CT side stones. (Lyon Auction Will Ship To Buyer, At Buyers Expense)

6 PRESSURE WASHERS

(4) NEW EASY KLEEN MAGNUM GOLD gas engine, 4000PSI, 12Volt, 15hp, Hot Water, totally self contained. NEW GREATBEAR 4000PSI HOT WATER w/tank. EX-CELL XHP2630 Honda gas engine.

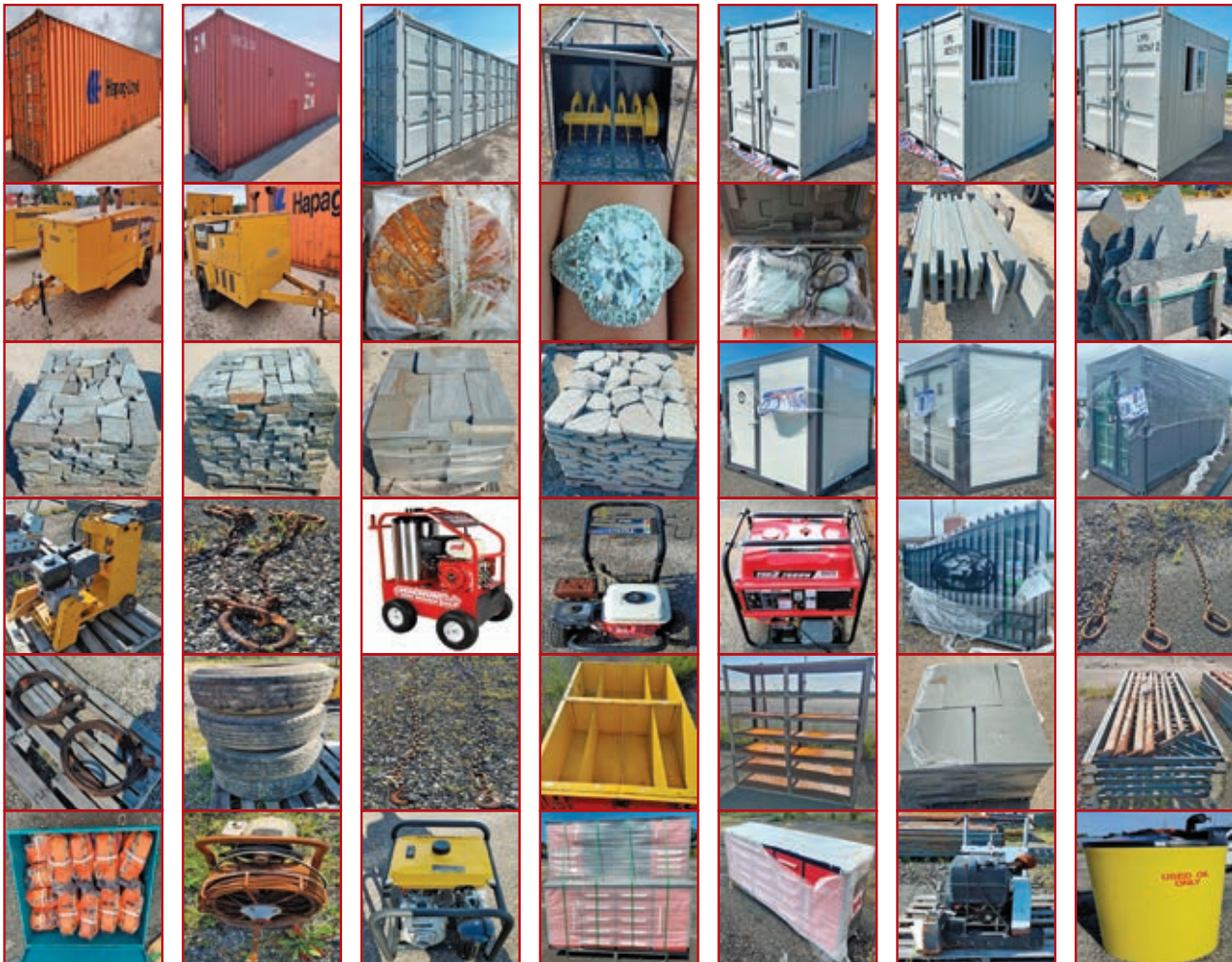
126 NEW SUPPORT EQUIPMENT

(6) NEW GENTRON 7500 WATT GENERATOR
(7) NEW STANLEY 7HP NON-SUBMERSIBLE 2IN. DISPLACEMENT WATER PUMP
(6) NEW TRADES PRO 850/1200 WATT 2-STROKE PORTABLE GENERATOR
(6) NEW CAMPBELL HAUSFELD 8 GALLON, 120V, 60HZ COMPRESSOR with 5pc tools.
(2) NEW STEELMAN 10FT. WORKBENCH W/ 15-DRAWERS & 2 CABINETS
(2) NEW STEELMAN 7FT. WORKBENCH W/ 10-DRAWERS & 2 CABINETS
(3) NEW STEELMAN 7FT. WORKBENCH W/ 18-DRAWERS
(6) NEW GREATBEAR 20FT. BI-PARTING WROUGHT IRON GATE With artwork "Deer" in the Middle of Gate Frame.
NEW GREATBEAR 14FT. BI-PARTING WROUGHT IRON GATE With artwork "Deer" in the Middle of Gate Frame.
(10) NEW (50) SAFETY HIGHWAY CONES
NEW GREATBEAR (38) 4.75T-12T RIGGING HARDWARE

(2) NEW GREATBEAR (5) 5400LBS RATCHET BINDER & (10) 20FT. 5/16" CHAIN
(2) NEW GREATBEAR (5) 9200LBS RATCHET BINDER & (10) 20FT. 3/8" CHAIN
NEW GREATBEAR QTY OF 22PC 2T-5T WEBBING SLING
(2) NEW 5/16" 7FT. G80 DOUBLE LEGS LIFTING CHAIN SLINGS
NEW GREATBEAR 16PC 2IN. X 27IN. RATCHET & 8PC 1.5IN. X 27IN. RATCHET
NEW GREATBEAR 400LB. CAST IRON ANVIL
NEW GREATBEAR 200LB. CAST IRON ANVIL
(4) NEW MUSTANG LF88 PLATE COMPACTOR
(4) NEW MUSTANG MP4800 2IN. SUB PUMP
(2) NEW MUSTANG CV3500 CONCRETE VIBRATOR
(4) NEW HUSKIE B65 ELECTRIC DEMO HAMMER
(2) NEW HUSKIE 11218SDS HAMMER DRILLS
(11) NEW 3 PC. 14IN. PREMIUM DIAMOND BLADES
(8) NEW 25FT., 800AMP EXTRA HD BOOSTER CABLE
(6) NEW 2IN. X 50FT. DISCHARGE WATER HOSE
(4) NEW AUTO DARKENING WELDING HELMET
(3) NEW 1/2IN. DRIVE AIR IMPACT WRENCH KIT
NEW 12V DIESEL FUEL PUMP
(2) NEW 6PK. 14IN. ABRASIVE BLADES
NEW GREASE GUN
(2) NEW 1/2 AR500 STEEL COYOTE SHOOTING TARGET
(4) NEW 30IN. X 57IN. WELDING TABLE W/SHELF
(2) NEW 29.5IN. X 90IN. HEAVY DUTY WORK BENCH W/ SHELF
(2) NEW 3/8IN. AR500 DUELING TREE SHOOTING TARGET
(4) NEW 3/8IN. AR500 GONG TARGET

36 SUPPORT EQUIPMENT

2015 BAND-IT HB19 STUMP GRINDER SN:1528
TARGET SUPER 3705 WALKBEHIND SAW
VARIOUS CONCRETE BLADES 54in., 34in. 24in. Size. 4-SECTION APPROX. 50FT. AIR SCREED Dutton-lainson capacity, 2500lb.
PALLET OF USED JACK HAMMERS
STEEL BAND SAW
2014 EDCO CPM-8 SCARIFIER SN:141210043 electric powered.
2017 TENNANT T500 28IN. FLOOR SCRUBBER SN:10860043
2015 TENNANT 5680 32IN. FLOOR SCRUBBER SN:5680-10741828/331176
2012 JD NEUHAUS PROFI 1T/2T AIR CHAIN HOIST SN:P304685
2012 INGER RAND BU7AAB-G CABLE WINCH TUGGER SN:BU19309
2017 RICE-HYDRO TM11 2-MAN AUGER SN:GJABH-1333263
2015 NORTON C2024SS CONCRETE SAW SN:15051133
(6) HEAVY DUTY LOWBOY CHAIN
METAL CART W/ SHELF
METAL SHELF RACK
(2) LIFT CHAIN
NEW DOUBLE WALL WASTE TANK
HEAVY DUTY LIFTING CHAIN
(2) PART LIFTING CHAIN
(2) (2) CHOKER 5/8IN. X 14FT. TARGET 12IN. CONCRETE SAW
CARLSON 14IN. CONCRETE SAW
UNIVERSAL TRACTOR SEAT
(3) PALLET RACKING
SEWER DRAIN CLEANER
EDCO CONCRETE GRINDER



****ONSITE/VIRTUAL LIVE AUCTION****

Please feel free to preview any of our Virtual Live Auction sale sites 5 days before auction day!

ATLANTIC CITY, NEW JERSEY - SATURDAY, SEPTEMBER 26TH AT 9:00 AM

ADDRESS: 4501 Leipzig Ave, Mays Landing, New Jersey 08330. **NOTE:** This sale promises to have the very best Construction Equipment, Aerials, Forklifts, Trucks & Trailers found anywhere. **SPECIAL NOTE:** This part of the auction will be a Live, In-Person event. Masks required. All people attending must follow CDC guidelines for social distancing and hand-washing. Thank you in advance for adhering to these requirements, we appreciate your cooperation! **SALE SITE PHONE:** (609) 204-3189 Jay. **TERMS & CONDITIONS:** "Cash or Company Check" accompanied by current "Bank Letter of Guarantee", made payable to Alex Lyon & Son. Everything Sells "AS IS, "WHERE IS." The following charges will apply on all purchases: (1.) For each unit \$35,001.00 and above, a 5.95% administration fee will be assessed when paying with cash or good check. (The standard fee of 8.95% will be assessed when paying with credit card); and (2.) For each unit \$1,001- \$35,000, a 10% administration fee will be assessed when paying with cash or good check, and a 13% fee will be assessed when paying with credit card. (3.) For each unit \$0- \$1,000, a 12.5% administration fee will be assessed when paying with cash or good check, and a 15.5% fee will be assessed when paying with credit card. ****ONLINE BIDDING: An additional fee of 2.5%, cap of \$700 for each piece.****



FOR BID ONLINE TECHNICAL ASSISTANCE CALL
Proxibid: (855) 636-6461
Nextlot: (919) 361-1111

14 HYDRAULIC EXCAVATORS

CAT 345CL SN:PJW01264 Cat diesel engine, Cab, air, heat, digging bucket, long undercarriage. Hydraulic Hammer Sells Separately.

DEMO CAT 325FLCR Cat diesel engine, Cab, air, heat, rear view camera, 9ft. 6in. Stick, 31.5in. Pads, reduced tail swing, digging bucket, long undercarriage.



2014 CAT 321DLCR SN:MPG00984 Cat diesel engine, Cab, air, reduced tail swing, 36in. Digging bucket long undercarriage, 1,115 hours.

2019 CAT 320 SN:00494 Cat C4.4 Diesel engine, 164 hp, Cab, air, next generation, 360 visibility, 9ft 6in stick, combination hydraulics, boom and stick lowering check valves, Cat GRADE with 3D, 28in. Pads, Cat hydraulic quick coupler, Cat digging bucket, long undercarriage, 600 hours.

2017 CAT 320FL SN:NHD010203 Cat diesel engine, Cab, air, heat, auxiliary hammer lines, hydraulic quick coupler, digging bucket, long undercarriage, excellent condition, 3,310 hours.



UNUSED CAT 313FL SN:DJE10445 Cat diesel engine, Cab, air, rear camera, front blade, reach boom, stick, auxiliary hydraulics, 28in. Pads, hydraulic quick coupler, 36in. digging bucket, long undercarriage. New RF 60in. Clean up bucket, 24in. & 18in. V buckets Sell Separately.

JOHN DEERE 270DLC SN:703187 John Deere diesel engine, Cab, air, heat, auxiliary hydraulics, 30in. Pads, digging bucket, long undercarriage.

2013 JOHN DEERE 130GLC SN:1FF130GXKDE040325 John Deere diesel engine, Cab, air, digging bucket, long undercarriage.



2017 HITACHI ZX180 SN:0018 diesel engine, Cab, air, pattern changer, 10ft. 6in. Arm, 32in. Pads, digging bucket, long undercarriage, 3,242 hours. PT & HYD Warranty 4-26-21.

2014 LINKBELT 145X3LC SN:LBX145Q6NDHEX1253 diesel engine, Cab, air, reduced tail swing, digging bucket, long undercarriage.



2013 TAKEUCHI TB285 SN:185000948 Yanmar diesel engine, Cab, air, front blade, rubber tracks, digging bucket, 989 hours.

2012 TAKEUCHI TB180FRC SN:178400822 Yanmar diesel engine, Cab, air, front blade, rubber tracks, digging bucket, 3,133 hours.

2014 WACKER ET20 SN:WNCE1203TPAL00612 diesel engine, OROPS, front blade, rubber tracks, digging bucket.

2014 IHI 30V4 SN:WS020007 diesel engine, OROPS, front blade, rubber tracks, digging bucket.

3 EXCAVATOR ATTACHMENTS

KEMROC ES20HD HYDRAULIC PLANER

SN:ES2100204

KEMROC EX20HD HYDRAULIC PLANER

SN:EX2100417

KEMROC EX20HD HYDRAULIC PLANER

SN:EX2100416

HYDRAULIC HAMMERS

EPIROC MB1500 SN:DEQ152085

2014 ATLAS COPCO MB1500 SN:DEQ132146

CONCRETE PULVERIZER

NEW BODINE CP-200 To Fit: 34-50,000 lbs. CAT 320/325, Komatsu PC 200/270 & similar sized machines 80/80 mm - 14.25".

MULTI SHEAR

NEW BODINE MS-200 To Fit: 34-50,000 lbs. CAT 320/325, Komatsu PC 200/270 & similar sized machines 80/80 mm - 14.25".

GRAPPLE RAKE

NEW BODINE GR-180 To Fit: 30-49,000 lbs. CAT 320/325, Komatsu PC 200/270 & similar sized machines 80/80 mm - 14.25".

GRAPPLE

NEW TERAN 80IN. ORANGE PEEL FOR CAT 312 AND 311D, 311F, 312D, 312D2, 312E, 312F, 313D2, 313F, 314D, 314E, 314F, 315F - "312" LINKAGE.

7 EXCAVATOR RIPPERS

(2) NEW TERAN SINGLE NOSE RIPPER for CAT 345/349D.



NEW TERAN RIPPER FOR CAT 336D AND 336D2, 336E, 336F, 340D2, 340F - "DB" LINKAGE.

NEW TERAN RIPPER FOR CAT 330 - "D" LINKAGE.



NEW TERAN RIPPER for Cat 312.



NEW TERAN RIPPER for KOMATSU PC200 / 220LC.

NEW TERAN RIPPER for JD270/ZX270.

4 EXCAVATOR THUMBS

NEW EMAQ 26IN. HYDRAULIC THUMB ASSEMBLY for 12-15 TON.

NEW TERAN 8IN. MANUAL THUMB FOR CAT 303 AND 2 - 3.5 TON MINI EXCAVATORS.



(2) NEW BODINE TH-180 To Fit: 30-49,000 lbs. CAT 320/325, Komatsu PC 200/270 & similar sized machines 80/80 mm - 14.25".

28 EXCAVATOR BUCKETS

NEW TERAN 60IN. MUD BUCKET for CAT 320.

NEW TERAN 60IN. MUD BUCKET for KOMATSU PC220.



NEW TERAN 60IN. MUD BUCKET FOR CAT 312 AND 311D, 311F, 312D, 312D2, 312E, 312F, 313D2, 313F, 314D, 314E, 314F, 315F - "312" LINKAGE.



NEW TERAN 54IN. DIGGING BUCKET for CAT 325D, 6HD TIPS.



NEW TERAN 48IN. SKELETON BUCKET for CAT 315, 6HD RC TIP.



NEW TERAN 48IN. HD DIGGING BUCKET FOR CAT 325D AND 324D, 324E, 326D2, 326F, 328D, 329D, 329D2, 329E, 329F, 330D2, 330F, 335F WITH SIDE CUTTERS, SIDE PROTECTORS, HEEL SHROUDS, LIP PROTECTORS, REINFORCEMENT PLATES AND 6RC TIPS - "CB" LINKAGE.



NEW TERAN 48IN. CLEAN UP BUCKET for Cat 305.



NEW TERAN 48IN DIGGING BUCKET FOR KOMATSU PC200/220LC-6.



NEW TERAN 42IN. DIGGING BUCKET for CAT 320.



NEW TERAN 39IN. HD DIGGING BUCKET FOR CAT 320 AND 319D, 320D, 320E, 321D, 323E, 323F, 325F WITH SIDE CUTTERS, SIDE PROTECTORS, HEEL SHROUDS, LIP PROTECTORS, REINFORCEMENT PLATES AND 5HD TIPS - "B" LINKAGE.



NEW TERAN 36IN. HD DIGGING BUCKET FOR CAT 320 AND 319D, 320D, 320E, 321D, 323E, 323F, 325F WITH SIDE CUTTERS, SIDE PROTECTORS, HEEL SHROUDS, LIP PROTECTORS, REINFORCEMENT PLATES AND 5HD TIPS - "B" LINKAGE.

NEW TERAN 30IN. DIGGING BUCKET FOR KOMATSU PC120LC.



NEW TERAN 30IN. DIGGING BUCKET FOR CAT 312 AND 311D, 311F, 312D, 312D2, 312E, 312F, 313D2, 313F, 314D, 314E, 314F, 315F WITH REINFORCEMENT PLATES AND SIDE CUTTERS AND 4HD TIPS - "312" LINKAGE.



NEW TERAN 30IN. DIGGING BUCKET for CAT 345.



NEW TERAN 30IN. DIGGING BUCKET for CAT 315, 4HD TIPS.



NEW TERAN 24IN. HD DIGGING BUCKET FOR CAT 320 AND 319D, 320D, 320E, 321D, 323E, 323F, 325F WITH SIDE CUTTERS, SIDE PROTECTORS, HEEL SHROUDS, LIP PROTECTORS, REINFORCEMENT PLATES AND 3HD TIPS - "B" LINKAGE.



NEW TERAN 24IN. DIGGING BUCKET FOR CAT 303 WITH SIDE CUTTERS, REINFORCEMENT PLATES AND 5HD TIPS.



NEW TERAN 24IN. DIGGING BUCKET for CAT 325D.



NEW TERAN 18IN. DIGGING BUCKET FOR CAT 305 WITH SIDE CUTTERS, REINFORCEMENT PLATES AND 4HD TIPS.



NEW TERAN 12IN. DIGGING BUCKET for CAT 320.



NEW EMAQ 54IN. DIGGING BUCKET for JD/EX/ZX D240LC/D270.



NEW EMAQ 30IN. DIGGING BUCKET for KOMATSU PC120LC.

NEW EMAQ 24IN. DIGGING BUCKET for KOMATSU PC120LC.



NEW EMAQ 18IN. DIGGING BUCKET for KOMATSU PC120LC.

NEW DIESEL 36IN. DIGGING BUCKET fits Cat 315/316, Komatsu PC160/170, Hyundai 160, Kobelco 160. Pins:70, Centers 18.23in., Ears:12.2in.



MILLER 58IN. DIGGING BUCKET 80MM PIN TO FIT CAT 320/321/323, KOMATSU PC210/228, JOHN DEERE 200/225, KOBELCO 210, CASE 210/225, DOOSAN DX225.



(2) STRICKLAND DIGGING BUCKET for CAT 308.
STRICKLAND DIGGING BUCKET for CAT 308.

MATERIAL HANDLERS



2009 FUCHS MHL350D SN:3502101650 diesel engine, High lift capacity, air, hydraulic 360 degree rotating orange peel grapple.



2008 FUCHS MHL320D SN:3201101067 diesel engine, High lift capacity, air, hydraulic 360 degree rotating orange peel grapple.

WATER TANKER



CAT D250E SERIES II SN:4PS00184 Cat diesel engine, Cab, air, Mega 6000 gallon water tank, remote cannon, hose reel, 23.5R25 rubber.

MOTOR GRADERS

2012 CAT 12M2 SN:F9M00151 Cat diesel engine, EROPS, air, 14ft. Moldboard, hydraulic sideshift, TIP control, mid mount scarifier, 14.00 x 24 rubber.



CAT 12G Cat diesel engine, EROPS, moldboard.

RUBBER TIRED LOADERS

2016 KOMATSU WA270-7 SN:A227530 Komatsu diesel engine, EROPS, air, ride control, Load Rite Scale, 4 yard GP bucket, 20.5R25 rubber.

HYUNDAI HL740-7 SN:LF0110422 Cummins diesel engine, EROPS, air, heat, 3rd valve hydraulics, JRB quick coupler, GP bucket, 20.5 x 25 rubber, low hours.

CRAWLER LOADER



CAT 973 SN:86G00714 Cat diesel engine, EROPS, GP bucket.

4 TRACTOR LOADER BACKHOES



2014 CAT 420FIT SN:JWJ02419 4x4, Cat C4.4 diesel engine, EROPS, air, heat, ride control, IT arrangement, extendahoe, GP front bucket, rear digging bucket, 3,062 hours.

CAT 446D 4x4, Cat diesel engine, EROPS, air, extendahoe, pilot controls, GP front bucket, rear digging bucket, low hours.



CAT 446D SN:DBL00513 4x4, Cat diesel engine, EROPS, GP front bucket, Rockblaster 250G hydraulic hammer.



JOHN DEERE 310D John Deere diesel engine, EROPS, GP front bucket, rear digging bucket.

6 TRACTOR LOADER BACKHOE ATTACHMENTS

NEW TERAN RIPPER for CAT 416/420/428/426.



NEW TERAN 48IN. CLEAN UP BUCKET for CAT 416/428/430.

CP RX8 HYDRAULIC HAMMER SN:BES021606

CP RX8 HYDRAULIC HAMMER SN:BES016748

NEW TERAN 48IN. TILT BUCKET FOR CAT 416/428.



NEW TERAN 48IN. TILT BUCKET for CAT 416.

3 CARRY DECK CRANES

BRODERSON IC-80-3G SN:601020 dual fuel engine, EROPS, 9 ton lift capacity, 30ft. Main boom, 10ft. JIB, (4) hydraulic outriggers.

BRODERSON IC-80-3G SN:552137 dual fuel engine, EROPS, 9 ton lift capacity, 30ft. Main boom, 10ft. JIB, (4) hydraulic outriggers.

BRODERSON IC-80-3G SN:525670 dual fuel engine, EROPS, 9 ton lift capacity, 30ft. Main boom, 10ft. JIB, (4) hydraulic outriggers.

MILLING MACHINES

2015 ROADTEC RX700E-2 SN:2051 Cat diesel engine, 800hp, 14in. Deep cut, 60 degree load-out conveyor swing, track mounted.

2007 WIRTGEN W500 SN:51380 diesel engine.

ASPHALT PAVER

BLAW KNOX PF150 VN:10828-10 diesel engine, rubber tired.

4 ASPHALT ROLLERS



2014 CAT CB54B SN:LXD00182 Cat C4.4 diesel engine, EROPS, 67in. Smooth drum, Versa vibe vibratory drum, double drum, water system, 2,626 hours.



2012 HAMM HD110HV SN:1740673 diesel engine, ROPS, 66in. Smooth drum, double drum, vibratory drum, drum drive, water system.

HAMM HD110HV SN:H174.0673 diesel engine, ROPS, 66in. Smooth drum, vibratory drum, double drum, drum drive, water system.

2015 HAMM H5I SN:H2220084 diesel engine, EROPS, 54in. Smooth drum, vibratory drum, drum drive.

VIBRATORY ROLLERS



UNUSED BOMAG BW177-5 diesel engine, EROPS, heat, 66in. Smooth drum, vibratory drum, drum drive. 6.5 hours

2013 JCB VM75D SN:JKC9442607 diesel engine, EROPS, 66in. Smooth drum, vibratory drum, drum drive.

TRENCH ROLLER

VERMEER TC4 Kohler gas engine, padsfoot drum, double drum, vibratory drum, drum drive.

7 RUBBER TRACKED SKID STEERS



2016 CAT 299D2 SN:FD200707 Cat diesel engine, EROPS, air, 2-speed hydrostatic transmission, rearview camera, high flow auxiliary hydraulics, electric quick coupler, rubber tracks, 17.7in. Rubber tracks, 84in. GP bucket w/ BOCE, 1,938 hours. New Engine 705 hours ago.



2014 CAT 299D SN:GTC00805 Cat diesel engine, EROPS, air, heat, auxiliary hydraulics, electric quick coupler, 17.7in. Rubber tracks, GP bucket, 3,700 hours.



2014 CAT 279D SN:GTL00646 Cat diesel engine, rollcage, 2-speed, auxiliary hydraulics, mechanical quick coupler, 17.7in. Rubber tracks, GP bucket, 2,325 hours.



2017 CAT 239D SN:BL901518 Cat diesel engine, EROPS, air, auxiliary hydraulics, mechanical quick coupler, 15.7in. Rubber tracks, 1,003 hours.



2014 JOHN DEERE 323E SN:1T0323EJCEJ266938

John Deere diesel engine, rollcage, auxiliary hydraulics, mechanical quick coupler, rubber tracks, GP bucket.

2014 JOHN DEERE 323E SN:1T0323EJHEJ266590

John Deere diesel engine, rollcage, auxiliary hydraulics, mechanical quick coupler, rubber tracks, GP bucket.



ASV RC50 SN:RCS00777 diesel engine, rollcage, pilot controls, auxiliary hydraulics, mechanical quick coupler, rubber tracks, GP bucket.

4 SKID STEERS

2015 CAT 242D SN:DZT02234 Cat diesel engine, EROPS, air, auxiliary hydraulics, mechanical quick coupler, GP bucket, 12 x 16.5 rubber, 1,216 hours.



2017 CAT 236D SN:BGZ03348 Cat diesel engine, EROPS, air, auxiliary hydraulics, mechanical quick coupler, GP bucket, 12 x 16.5 rubber, 649 hours.

2017 BOBCAT S850 SN:B47711155 diesel engine, rollcage, auxiliary hydraulics, mechanical quick coupler, GP bucket.

2012 JOHN DEERE 318D SN:1T0318DJCCG220912 John Deere diesel engine, rollcage, auxiliary hydraulics, mechanical quick coupler, GP bucket, 1,336 hours.

19 SKID STEER ATTACHMENTS

- (2) NEW GREATBEAR SH750 HYDRAULIC HAMMER
- (2) NEW GREATBEAR AUGER W/ 3-BITS
- NEW GREATBEAR TRENCHER
- (2) NEW GREATBEAR ROTARY CULTIVATOR
- (2) NEW GREATBEAR 86IN. HYDRAULIC SNOW PLOW
- (2) NEW GREATBEAR 72IN. HYDRAULIC ROCK BUCKET
- (2) NEW GREATBEAR 66IN. BRUSH CUTTER
- (2) NEW GREATBEAR 72IN. HYDRAULIC VIBRATORY ROLLER
- NEW 78IN. FORK GRAPPLE
- (2) NEW (2) FORK EXTENSION



2008 BOBCAT SWEEPER 72 SN:11980

17 TELESCOPIC FORKLIFTS

- 2011 GEHL DL11H-55** SN:DL1155HJC0241278 4x4, diesel engine, EROPS, 11,000lb lift capacity, 55ft. Reach height, front stabilizers.
- 2011 GENIE GTH-1056** SN:GTH1011-14239 4x4, diesel engine, EROPS, 10,000lb lift capacity, 56ft. Reach height, front stabilizers.
- GENIE GTH-1056** SN:GTH1007A-11710 4x4, John Deere diesel engine, EROPS, 10,000lb lift capacity, 56ft. Reach height, front stabilizers.
- JLG G10-55A** SN:0160010113 4x4, John Deere diesel engine, EROPS, 10,000lb lift capacity, 55ft. Reach height, front stabilizers.
- 2012 JLG G9-43A** SN:160045107 4x4, diesel engine, EROPS, 9,000lb lift capacity, 43ft. Platform height.
- 2011 JLG 8042** SN:160041783 4x4, diesel engine, EROPS, 8,000lb lift capacity, 42ft. Reach height.
- 2014 CAT TL943C** SN:THH01081 4x4, Cat diesel engine, EROPS, air, heat, 9,000lb lift capacity, 43ft. Reach height, front stabilizers, auxiliary hydraulics, 52in. Frame, 48in. Forks, 370x75x28 foam filled rubber.



CAT TH62 4x4, diesel engine, EROPS, 6,000lb lift capacity, 25ft. Reach height.

2013 SKYTRAK 10054 SN:160049338 4x4, diesel engine, EROPS, 10,000lb lift capacity, 54ft. Reach height, front stabilizers.

NEW UNUSED SKYTRAK 8042 4x4, Cummins diesel engine, EROPS, air, 8,000lb lift capacity, 42ft. Reach height, 50in. Carriage, 48in. Pallet forks.

2012 SKYTRAK 8042 SN:46490 4x4, powered by diesel engine, EROPS, 8,000lb lift capacity, 42ft. Reach height.

2012 SKYTRAK 6042 SN:160045420 4x4, diesel engine, EROPS, 6,000lb lift capacity, 42ft. Reach height.



SKYTRAK 6036 SN:160031501 4x4, diesel engine, EROPS, 6,000lb lift capacity, 36ft. Reach height.



SKYTRAK 6036 SN:160031257 4x4, diesel engine, EROPS, 6,000lb lift capacity, 36ft. Reach height.

2013 JCB 510-56 SN:1404147 4x4, diesel engine, EROPS, 10,000lb lift capacity, 56ft. Reach height, front stabilizers.

2013 JCB 509-42 SN:1403427 4x4, diesel engine, EROPS, 9,000lb lift capacity, 42ft. Reach height.

2013 JCB 520-50 SN:1462415 4x4, diesel engine, EROPS, 4,400lb lift capacity, 16ft. Reach height.

3 FORKLIFTS

HYSTER S60XM SN:D187V09339V powered LP engine, EROPS, 6,000lb lift capacity, 3-stage, 48in. Forks.



HYSTER S55XM SN:D187V06573U LP engine, EROPS, 5,500lb lift capacity, 3-stage mast, 48in. Forks.

HYSTER S50XM SN:23397Y LP engine, EROPS, 5,500lb lift capacity, 3-stage mast, 48in. Forks.

61 BOOM LIFTS

2011 GENIE Z135/70 SN:Z13511-1463 4x4, diesel engine, 135ft. platform height, articulating boom, 500lb lift capacity.



GENIE S125 SN:S12508-1953 4x4, diesel engine, 125ft. Platform height, straight boom, JIB, 500lb lift capacity.

GENIE S125 SN:S12507-1863 4x4, diesel engine, 125ft. Platform height, straight boom, JIB, 500lb lift capacity.



GENIE S125 SN:051038 4x4, diesel engine, 125ft. Platform height, straight boom, JIB, 500lb lift capacity.



GENIE S120 SN:2502 4x4, Deutz diesel engine, 120ft. Platform height, straight boom, cold weather package, 500lb lift capacity, foam filled rubber.

GENIE S85 SN:S8008-7026 4x4, diesel engine, 85ft. platform height, straight boom, 500lb lift capacity.

GENIE S85 SN:S8008-6693 4x4, diesel engine, 85ft. platform height, straight boom, 500lb lift capacity.

2013 GENIE S80 SN:S80X13-9789 4x4, Deutz diesel engine, 80ft. Platform height, straight boom, 500lb lift capacity.



2011 GENIE S80X SN:S80X12-9109 4x4, diesel engine, 80ft. Platform height, straight boom, 500lb lift capacity.

2011 GENIE S80X SN:8809 4x4, Perkins diesel engine, 80ft. Platform height, straight boom, cold weather ready package, welder ready, air to platform, 500lb lift capacity.

GENIE S80X SN:8805 4x4, Perkins diesel engine, 80ft. Platform height, straight boom, cold weather ready package, welder ready, air to platform, 500lb lift capacity.



2012 GENIE Z80/60RT SN:Z8012-3510 4x4, diesel engine, 80ft. platform height, articulating boom, JIB, 500lb lift capacity.



2012 GENIE Z80/60RT SN:3372 4x4, diesel engine, 80ft. Platform height, articulating boom, JIB, 500lb lift capacity, 2,627 hours.



2012 GENIE Z80/60 SN:3433 4x4, diesel engine, 60ft. Platform height, articulating boom, welder ready, 500lb lift capacity, foam filled rubber, 1,672 hours.



2013 GENIE S60 SN:S60X13-26440 4x4, Deutz diesel engine, 60ft. Platform height, straight boom, 500lb lift capacity.



GENIE S60 SN:600715458 4x4, Deutz diesel engine, 60ft. Platform height, straight boom, 500lb lift capacity. Manufacturer refurb 2015.



2012 GENIE Z60 SN:11521 4x4, Perkins diesel engine, 60ft. platform height, articulating boom, welder ready, 500lb lift capacity, foam filled rubber, 2,118 hours.



2012 GENIE Z45/25J SN:43644 4x4, diesel engine, 45ft. Platform height, JIB, articulating boom, 500lb lift capacity, 1,942 hours.

2012 GENIE Z45/25 SN:Z452512A-44435 electric powered, 45ft. Platform height, articulating boom, 500lb lift capacity.



2010 GENIE Z45/25J SN:39802 dual fuel engine, 45ft. Platform height, articulating boom, JIB, 500lb lift capacity, 1,478 hours.

GENIE Z45/25J SN:Z452508A-37594 electric powered, 45ft. Platform height, articulating boom, JIB, 500lb lift capacity.

GENIE Z45/22 SN:4589-2224 4x4, diesel engine, 45ft. Platform height, articulating boom, JIB, 500lb lift capacity.



2011 GENIE Z40/23N RJ SN:Z40N11-1277 electric powered, 40ft. Platform height, articulating boom, 500lb lift capacity.



2011 GENIE Z40/23N RJ SN:Z40N11-1092 electric powered, 40ft. Platform height, articulating boom, 500lb lift capacity.



GENIE Z40/23N RJ SN:Z40N08-543 electric powered, 40ft. Platform height, articulating boom, 500lb lift capacity.

2011 JLG 1350SJP SN:300150897 4x4, diesel engine, 135ft. platform height, straight boom, JIB, 500lb lift capacity.

2011 JLG 1350SJP SN:300150581 4x4, diesel engine, 135ft. platform height, straight boom, JIB, 500lb lift capacity.



2010 JLG 1200SJP SN:300141740 4x4, diesel engine, 120ft. Platform height, straight boom, JIB, 500lb lift capacity.

2011 JLG 800S SN:0300152459 80ft. Platform height, straight boom, 500lb lift capacity.

2011 JLG 800AJ SN:300151863 4x4, diesel engine, 80ft. platform height, articulating boom, JIB, 500lb lift capacity.

JLG 800AJ SN:30071374 4x4, diesel engine, 80ft. platform height, articulating boom, JIB, 500lb lift capacity.

(2) NEW UNUSED JLG 660SJ 4x4, diesel engine, 66ft. Platform height, articulating boom, JIB, Skypower, 500lb lift capacity.

2011 JLG 600AJ SN:300153598 4x4, diesel engine, 60ft. Platform height, articulating boom, JIB, 500lb lift capacity.

2011 JLG 600AJ SN:300148862 4x4, diesel engine, 60ft. Platform height, articulating boom, JIB, 500lb lift capacity.

JLG 600AJN SN:300129261 dual fuel engine, 60ft.

Platform height, articulating boom, JIB, 500lb lift capacity, narrow.

JLG 600AJN SN:300130148 4x4, dual fuel engine, 60ft. Platform, articulating boom, narrow, 500lb lift capacity. HRS-2857



JLG 600SJ SN:300101949 4x4, diesel engine, 66ft. Platform height, straight boom, JIB, 500lb lift capacity.

2012 JLG 450AJ SN:300157408 4x4, diesel engine, 45ft. Platform height, articulating boom, JIB, 500lb lift capacity.

2011 JLG 450AJ SN:300153216 4x4, diesel engine, 45ft. Platform height, articulating boom, JIB, 500lb lift capacity.

2011 JLG 450AJ SN:300150257 4x4, diesel engine, 45ft. Platform height, articulating boom, JIB, 500lb lift capacity.



2012 JLG 400S SN:300160124 4x4, diesel engine, 40ft. Platform height, straight boom, 500lb lift capacity.

2011 JLG 400S SN:300152641 4x4, diesel engine, 40ft. Platform height, straight boom, 500lb lift capacity.



(15)JLG 400S 4x4, diesel engine, 40ft. Platform height, straight boom, skypower, 500lb lift capacity.

2012 JLG E400AJPN SN:'0300156768 electric powered, 40ft. Platform height, articulating boom, JIB, 500lb lift capacity, narrow.

2011 JLG E400AJPN SN:'0300147334 electric powered, 40ft. Platform height, articulating boom, JIB, 500lb lift capacity, narrow.

2016 HAULOTTE HT132RTJ PRO SN:TD107606 4x4, Perkins diesel engine, equipped with 132ft. Platform height, straight boom, JIB, 8ft. Manbasket, 500lb lift capacity, 445x65Dx22.5 foam filled rubber.

7 ELECTRIC BOOM LIFTS

(2)2011 JLG M600JP SN:300146504 electric powered, 60ft. Platform height, articulating boom, JIB, Kubota diesel generator to charge batteries, 500lb lift capacity.

(5)2010 JLG M600JP electric powered, 60ft. Platform height, articulating boom, JIB, Kubota diesel generator to charge batteries, 500lb lift capacity.

42 SCISSOR LIFTS

SKYJACK SJ9250RT SN:50000662 4x4, diesel engine, 50ft. Platform height, slide out deck, rough terrain tires.

SKYJACK SJ7127RT SN:34001351 4x4, 27ft. Platform height, slide out deck, rough terrain tires, 2,782 hours.



(8)SKYJACK SJ6826RT 4x4, gas engine, 26ft. Platform height, slide out deck, 500lb lift capacity.

2013 SKYJACK SJIII4632 SN:70014240 electric powered, 32ft. Platform height, slide out deck, 500lb lift capacity.

2013 SKYJACK SJIII4632 SN:70014070 electric powered, 32ft. Platform height, slide out deck, 500lb lift capacity.



(7)SKYJACK SJ3219 electric powered, 19ft. Platform height, slide out deck, 500lb lift capacity.

2012 SKYJACK SJ16 SN:14001424 electric powered, 16ft. Platform height.



(6)SKYJACK SJ3215 electric powered, 15ft. Platform height, slide out deck, 500lb lift capacity.

2011 SKYJACK SJ12 SN:14000774 electric powered, 12ft. Platform height.

2012 GENIE GS-5390 RT SN:GS9012-48141 4x4, diesel engine, 53ft. Platform height, slide out deck, rough terrain tires.



2013 GENIE GS-2632 SN:GS3213A-116069 electric powered, 26ft. Platform height, slide out deck, 500lb lift capacity.



2011 JLG 4069LE SN:0200200877 electric powered, 40ft. Platform height, slide out deck.



(5)JLG 20MVL electric powered, 20ft. Platform height, slide out deck, 500lb lift capacity.



(6)JLG 1230ES electric powered, 12ft. Platform height, slide out deck, 500lb lift capacity.



2014 MEC 3259 ERT SN:13100234 4x4, electric powered, 32ft. Platform height, slide out deck.

19 AIR COMPRESSORS



2012 ATLAS COPCO XATS1600JD7 PFF SN:HOP090502 John Deere diesel engine, 1600CFM, trailer mounted.

2012 ATLAS COPCO XATS1600JD7 PFF SN:HOP090502 diesel engine, 1,600 CFM, trailer mounted.

2013 ATLAS COPCO XATS400JD SN:HOP074505 John Deere diesel engine, 400CFM, trailer mounted.

2013 ATLAS COPCO XATS400JD SN:HOP074187 John Deere diesel engine, 400CFM, trailer mounted.

(3)2014 ATLAS COPCO XAS185JD John Deere diesel engine, 185CFM, trailer mounted.

(8)2013 ATLAS COPCO XAS185JD John Deere diesel engine, 185CFM, trailer mounted.

(2)SULLAIR 1600HADTQCA diesel engine, 1,600CFM, trailer mounted.

2017 SULLAIR 185CFM SN:180013 John Deere diesel engine, 185CFM, trailer mounted.

2012 SULLAIR P185DPQJDT4I SN:201202280042 John Deere diesel engine, 185CFM, trailer mounted.

5 GENERATORS

2012 MAGNUM PRO MMG130 SN:1216267 diesel engine, 130KVA, trailer mounted.

2014 MAGNUM PRO MMG75D SN:1407103 diesel engine, 75KVA, trailer mounted.

2014 MAGNUM PRO MMG25FH SN:1403529 diesel engine, 25KVA, trailer mounted.

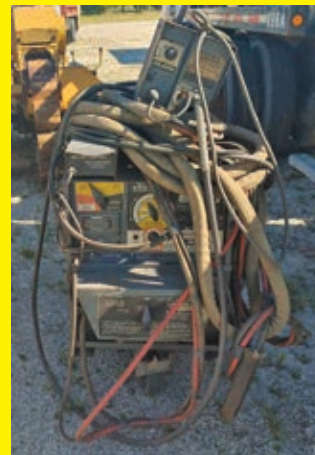
2014 WACKER G70 ERT T4I SN:20221717 diesel engine, 70KVA, trailer mounted.

2014 WACKER G25 SN:20224565 diesel engine, 25KVA, trailer mounted.

7 WELDERS

2015 LINCOLN VANTAGE 520 SN:U1150503827 500AMPS, trailer mounted.

2012 LINCOLN VANTAGE 500 SN:U1120400936 500AMPS, trailer mounted.



LINCOLN DC400 400AMPS.

MILLER BOBCAT 225 Kohler gas engine.



MILLER BLUE STAR 185 SN:MF291077R gas engine.



(2) MILLER 200LE

16 GROUND HEATERS

(4)2014 DRYAIR 600GTS 11000-12000 Sq Ft
 2014 DRYAIR GTS300 SN:156408 5000-6000 Sq Ft
 (2)2014 HEAT KING HK500 11000-12000 Sq Ft
 (4)2015 HEAT KING HK300 5000-6000 Sq Ft
 (3)2014 HEAT KING HK300 5000-6000 Sq Ft
 2014 THOR LD5030 SN:'090414 5000-6000 Sq Ft
 2014 CROWN HEAT KING 500 SN:HK14100 11000-12000 Sq Ft

61 LIGHT PLANTS

2015 GENIE RL4 SN:RL415-13363 diesel engine, 4-1,000 watt lightbulbs, 6KW, trailer mounted.
 2014 GENIE RL4 SN:RL414-9929 diesel engine, 4-1,000 watt lightbulbs, 6KW, trailer mounted.
 (2)2013 GENIE RL4 diesel engine, 4-1,000 watt lightbulbs, 6KW, trailer mounted.
 2015 MAGNUM PRO MLT6SM SN:1510035 diesel engine, 4-1,000 watt lightbulbs, 6KW, trailer mounted.
 (2)2012 MAGNUM PRO MLT4080 diesel engine, 4-1,000 watt lightbulbs, 6KW, trailer mounted.
 (20)2015 MAGNUM PRO MLT3060 diesel engine, 4-1,000 watt lightbulbs, 6KW, trailer mounted.
 (34)2014 MAGNUM PRO MLT3060 diesel engine, 4-1,000 watt lightbulbs, 6KW, trailer mounted.

ARROW/MESSAGE BOARDS



TRAFCON TC1-15S ARROWBOARD solar powered.



SOLAR TECHNOLOGY ARROWBOARD solar powered.

3 WATER PUMPS



GODWIN CD150 6IN. DRI-PRIME PUMP John Deere diesel engine, 6in. Diameter.



PIONEER 6IN. PUMP diesel engine, 6in. Pump, trailer mounted.

MULTIQUIP 4IN. PUMP diesel engine, 4in. Pump, trailer mounted.

6 COMMERCIAL MOWERS



NEW WORLDLAWN DIAMOND BACK XE 691 gas engine, ROPS, 60in. Cutting deck, zero turn.



NEW WORLDLAWN VIPER XL 23 gas engine, ROPS, 50in. Cutting deck, zero turn.



NEW WORLDLAWN DIAMOND BACK XE 730 gas engine, ROPS, 48in. Cutting deck, zero turn.



(3) NEW UNUSED BIG DOG ALPHA Kawasaki gas engine, 52in. Cutting deck, zero turn.

TRACTOR LOADER



UNUSED NEW HOLLAND WORKMASTER 40 4x4 SN:10822, diesel engine, 40hp, ROPS, New Holland 250TLA front loader w/ GP bucket, 3pt hitch, PTO.

3 SWEEPERS

2014 BROCE KR-350 SN:408791 diesel engine, EROPS, 8ft. Broom, water system.



2009 JOHNSTON VN:2090 diesel engine, sweeper body, dual wheel single axle.



2007 ELGIN GEOVAC VN:60594 diesel engine, power steering, town owned, low mileage.



VAN TRUCKS



2012 ISUZU NPR-HD SN:JALC4W162C7000728 diesel engine, power steering, power steering, 15ft. Van body, Liftgate, dual wheel single axle.



2008 MITSUBISHI FUSO FE125 VN:N/A diesel engine, power steering, 10ft. Van body, dual wheel single axle.

WATER TRUCK

2013 FREIGHTLINER M2 106

VN:1FVACXDTXDHBZ3572 diesel engine, automatic transmission, power steering, 2000 gallon water tank, dual wheel single axle.

DISTRIBUTOR TRUCK



1994 FORD C8000 VN:5343 Cummins 8.3 diesel engine, automatic transmission, power steering, tack body, dual wheel single axle, 56,000 miles, municipal owned.

BUCKET TRUCK

2009 FORD E-350 VN:1FTSE34L89DA79827 gas engine, power steering, bucket van body.

GARBAGE TRUCK

2009 MACK 613 VN:M002482 Mack MP8 diesel engine, Heil Formula 5000 body, 25 yard capacity, hydraulic locks, tandem axle.

ROLLBACK TRUCK



1988 INTERNATIONAL 1954 VN:N/A diesel engine, automatic transmission, power steering, rollback body, boom, dual wheel single axle.

ROLLOFF TRUCKS



1999 FREIGHTLINER 112 VN:8854 Cat diesel engine, 8 speed transmission, power steering, rolloff body, 46,000lb rears, air lift third axle, triaxle.



1993 PETERBILT VN:5701 Cat 3406B diesel engine, 8LL transmission, power steering, American 75,000lb rolloff body, 46,000lb rears, air lift third axle, triaxle.

HOOK LIFT TRUCK



2005 MACK VISION VN:6909 Mack 350 diesel engine, automatic transmission, power steering, hooklift body, 44,000lb rears, tandem axle, 156,000 miles.

ATTENUATOR TRUCK



1986 MACK RS686 VN:N/A Mack diesel engine, 5 speed transmission, power steering, attenuator body, tandem axle.

FLATBED TRUCK



2005 HINO 268 VN:N/A diesel engine, power steering, flatbed body, dual wheel single axle.

4 CAB & CHASSIS



UNUSED 2020 KENWORTH T370

VN:2NKHJM7X8LM391060 4x4, Paccar PX-7 diesel engine, equipped Allison 3500RDS 5 speed automatic transmission, Fabco TC-237 2-speed transfer case, power steering, a/c, am/fm/bluetooth, power locks, 56 gallon fuel tank, dark slate gray seat, 13,220lb fronts, 21,000lb rears, 125in. CA, 193in. Wheelbase, 5.57 ratio, trailer abs electric supply, 11R22.5 tires, dual wheel single axle.



UNUSED 2020 KENWORTH T370

VN:2NKHJM7X4LM391038 4x4, Paccar PX-7 diesel engine, equipped Allison 3500RDS 5 speed automatic transmission, Fabco TC-237 2-speed transfer case, power steering, a/c, am/fm/bluetooth, power locks, 56 gallon fuel tank, dark slate gray seat, 13,220lb fronts, 21,000lb rears, 125in. CA, 193in. Wheelbase, 5.57 ratio, trailer abs electric supply, 11R22.5 tires, dual wheel single axle.



UNUSED FORD F550 VN:1FDUF5HY6JEC42928 4x4, 6.8L V10 gas engine, 6 speed automatic transmission, cruise control, a/c, tilt/ telescope column, power steering, medium earth gray vinyl, transmission power take-off provision, hill start assist, jewel effect headlamps, front & rear stabilizer bar, snow plow package, 145in. wheel base, 60in. Cab to axle, 4.88 ratio, 225/70R19.5 traction tires, dual wheel single axle.

LYON



2000 FREIGHTLINER FL60 VN:G64249 5.9L Cummins CNG engine, 5 speed transmission, power steering, 10R22.5 tires, dual wheel single axle.

3 STAKE TRUCKS

2008 FREIGHTLINER M2 106 VN:1FVACXDJ58HZ57247 diesel engine, automatic transmission, power steering, 20ft. Stake body, liftgate, dual wheel single axle.



2005 FORD F350 VN:B45165 6.0L diesel engine, automatic transmission, power steering, stake body, fifth wheel ball, dual wheel single axle.



CHEVY GMT-400 VN:119876 stake rack body, dual wheel single axle, 65,000 miles.

3 SERVICE TRUCKS

2011 DODGE 5500 VN:3D6WA7ELXBG595841 diesel engine, automatic transmission, power steering, service body, dual wheel single axle.

2009 FORD F550 VN:1FDAF57R29EA60362 Diesel engine, automatic transmission, power steering, service body, dual wheel single axle.

2015 FORD T250 VN:1FTNR1YM6FKB09455 gas engine, automatic transmission, power steering, cargo body.



20 TRUCK TRACTORS



2015 MACK CXU613 VN:050826 Mack MP8 diesel engine, 505hp, Mack TMD12A0 12 speed transmission, Mack powerleash engine brake, power steering, a/c, 120 volt 1500 watt engine block heater, premium stereo/cd/ weatherband/MP3/Bluetooth & Sirius/Cobra weatherband CB radio, Westcoast power/ heated mirrors, (2) 72 gallon aluminum fuel tanks, 14,600lb Meritor fronts, 46,000lb Meritor rears, Mack air suspension, 3.21 ratio, 11R22.5 tires, tandem axle, 271,716 miles.



2015 MACK CXU613 VN:047739 Mack MP8 diesel engine, 505hp, Mack TMD12A0 12 speed transmission, Mack powerleash engine brake, power steering, a/c, 120 volt 1500 watt engine block heater, premium stereo/cd/ weatherband/MP3/Bluetooth & Sirius/Cobra weatherband CB radio, Westcoast power/ heated mirrors, 142 gallon aluminum fuel tanks, 48in. flat top sleeper, 14,600lb Meritor fronts, 46,000lb Meritor rears, Mack air suspension, 3.21 ratio, 11R22.5 tires, tandem axle.



2015 MACK CXU613 VN:047735 Mack MP8 diesel engine, 505hp, Mack TMD12A0 12 speed transmission, Mack powerleash engine brake, power steering, a/c, 120 volt 1500 watt engine block heater, premium stereo/cd/ weatherband/MP3/Bluetooth & Sirius/Cobra weatherband CB radio, Westcoast power/ heated mirrors, 142 gallon aluminum fuel tanks, 48in. flat top sleeper, 14,600lb Meritor fronts, 46,000lb Meritor rears, Mack air suspension, 3.21 ratio, 11R22.5 tires, tandem axle.

2015 MACK CXU613 VN: 047738 Mack MP8 diesel engine, 505hp, Mack TMD12A0 12 speed transmission, Mack powerleash engine brake, power steering, a/c, 120 volt 1500 watt engine block heater, premium stereo/cd/ weatherband/MP3/Bluetooth & Sirius/Cobra weatherband CB radio, Westcoast power/ heated mirrors, (2) 72 gallon aluminum fuel tanks, 14,600lb Meritor fronts, 46,000lb Meritor rears, Mack air suspension, 3.21 ratio, 11R22.5 tires, tandem axle.



2015 MACK CXU613 VN:047731 Mack MP8 diesel engine, 505hp, Mack TMD12A0 12 speed transmission, Mack powerleash engine brake, power steering, a/c, 120 volt 1500 watt engine block heater, premium stereo/cd/ weatherband/MP3/Bluetooth & Sirius/Cobra weatherband CB radio, Westcoast power/ heated mirrors, 142 gallon aluminum fuel tanks, 48in. flat top sleeper, 14,600lb Meritor fronts, 46,000lb Meritor rears, Mack air suspension, 3.21 ratio, 11R22.5 tires, tandem axle.



2015 MACK CXU613 VN:047730 Mack MP8 diesel engine, 505hp, Mack TMD12A0 12 speed transmission, Mack powerleash engine brake, power steering, a/c, 120 volt 1500 watt engine block heater, premium stereo/cd/ weatherband/MP3/Bluetooth & Sirius/Cobra weatherband CB radio, Westcoast power/ heated mirrors, (2) 72 gallon aluminum fuel tanks, sleeper, 14,600lb Meritor fronts, 46,000lb Meritor rears, Mack air suspension, 3.21 ratio, 11R22.5 tires, tandem axle.



2014 MACK CXU612 VN:006633 Mack MP7 diesel engine, 405hp, M-drive transmission, power steering, 156in. Wheelbase, 3.42 ratio, air suspension, 22.5 tires, tandem axle.



2014 VOLVO VNL64T630 VN:175241 Volvo D13 diesel engine, 425hp, Volvo I-shift 12 speed automatic transmission, power steering, power and heated mirrors, cruise control, engine block heater, 100 & 125 aluminum fuel tanks, 61in. sleeper, air slide 5th wheel, air ride suspension, aluminum wheels, 221in. Wheelbase, 2.64 ratio, 22.5 tires, tandem axle.



2011 VOLVO VN:4V4NC9EG2BN294129 Volvo D13 diesel engine, Fuller FR 142 10B 10 speed transmission, power steering, Volvo air ride suspension, 12,500lb fronts, 40,000lb rears, 295/75R22.5 tires, tandem axle.



2008 VOLVO VNL VN:4V4NC9GG88N484104 Volvo VNL diesel engine, Fuller FRO-162 14210C 10 speed transmission, power steering, Volvo air ride suspension, 12,500lb fronts, 40,000lb rears, 11R22.5 tires, tandem axle.



2013 INTERNATIONAL VN:934481 Twin turbo diesel engine, Eaton Ultrashift transmission, power steering, engine brake, air ride, tandem axle.

2013 INTERNATIONAL 8300 VN:N/A diesel engine, 430hp, Eaton ultra shift transmission, engine brake, a/c, power steering, air ride, tandem axle.



2012 INTERNATIONAL 8600 VN:624524 diesel engine, Eaton Fuller FRO-14210C transmission, power steering, tandem axle.

2010 INTERNATIONAL International Maxx Force diesel engine, power steering, tandem axle.



2010 INTERNATIONAL VN:365417 International Maxx Force diesel engine, power steering, tandem axle.

2010 INTERNATIONAL PRO STAR VN:230333 Max Force 13 diesel engine, automatic transmission, power steering, sleeper, tandem axle.



2009 INTERNATIONAL VN:2HSCUSBR09C128163 Cat C13 diesel engine, Eaton 10 speed transmission, power steering, engine brake, aluminum rims & aluminum tanks, full fenders, power divider lock out, air ride suspension, tandem axle.

2009 INTERNATIONAL VN:2HSCUSBR99C128162 Cat C13 diesel engine, Eaton 10 speed transmission, power steering, engine brake, aluminum rims & aluminum tanks, full fenders, 60in. sleeper, power divider lock out, air ride suspension, tandem axle.

2001 KENWORTH T800 VN:J882648 Cat C15 diesel engine, 475hp, 8LL speed transmission, power steering, New 18ft. Bibeau dump body, Chalmers rear suspension, 20,000lb steerable pusher axle, 46,000lb rears, new wheels, brake, tires, triaxle.

2000 KENWORTH W900B VN:N/A Cummins red top select plus diesel engine, 500hp, power steering, 2-line wetline, 46,000lb rears, aluminum wheels, new tires, tandem axle.

9 DUMP TRUCKS

2012 INTERNATIONAL VN:678623 diesel engine, power steering, a/c, am/fm, New 10ft. Dump body, dual wheel single axle.

2006 INTERNATIONAL 7600 VN:1HTWYAHT76J387014 diesel engine, power steering, dump body, air lift third axle, triaxle.



2006 INTERNATIONAL 7600 VN:1HTWYAHT56J387013 diesel engine, power steering, dump body, tarp system, air lift third axle, triaxle.

2006 KENWORTH T600 VN:N/A diesel engine, 300hp, 10 speed transmission, New 10ft. Dump body, dual wheel single axle, 206,000 miles.

2003 GMC SIERRA 3500 VN:362188 power steering, dump body, snow plow.

1998 PETERBILT 330 VN:N/A Cat diesel engine, 330hp, 10 speed transmission, New 10ft. Dump body, dual wheel single axle, 97,000 miles.



2003 CHEVY C4500 VN:1GBE4E1123F519510 power steering, 4 yard mason dump, dual wheel single axle.



1987 CHEVY C70 VN:N/A Detroit 8.2L diesel engine, power steering, dump body, attenuator, dual wheel single axle.

1972 FORD VN:90509 dump body, dual wheel single axle.

5 PICKUP TRUCKS

2014 FORD F150 VN:1FTFX1EF6EFA22758 gas engine, automatic transmission, power steering, crew cab.



FORD F150 VN:A80981 gas engine, power steering.

2015 DODGE 2500 VN:3C6LR5AT5FG625921 4x4, gas engine, automatic transmission, power steering.

2005 DODGE 2500 VN:768133 150,277 miles.

2015 DODGE 1500 VN:1C6RR7GT7F5578641 4x4, gas engine, automatic transmission, power steering, quad cab, 137,327 miles.



VAN

2006 FORD F350 VN:A28345 150,500 miles.

DETACHABLE GOOSENECK TRAILER

NEW 2020 WITZCO RG50 VN:00176 50 ton capacity, tri-axle, 8ft. 6in. wide, level deck style, 48ft. long, level deck style, ground bearing, 2 angle scraper with self-contained hydraulic system, 22ft. load deck, tapered front beam, 2in. lumber decking, (24) 12in. outriggers, 3 D-rings per side of deck, Hutch 9700 spring suspension, 16.5in. x 7in. air brakes, unimount wheels with 255x22.5 radial tires, modular wire harness, rubber mounted sealed. FET APPLIES.

11 EQUIPMENT TRAILERS**2015 TRAILKING TK80HT2-48-PB8**

VN:1TKA04821FM054967 48ft. X 102in. Deck, 8ft. Upper deck, 40 ton capacity, hydra-tail, tandem axle.

2011 TRAILKING TK80HT2-48-PB8

VN:1TKA04823CM105459 48ft. X 102in. Deck, 8ft. Upper deck, 40 ton capacity, hydra-tail, tandem axle.

2015 TRAILZEZE TE80XT48DD

VN:1DAHLD723FC021697 48ft. X 102in. Deck, 8ft. Upper deck, 40 ton capacity, hydra-tail, tandem axle.

2012 TRAILZEZE TE80XT48 VN:1DAHFC729CC020793 48ft. X 102in. Deck, 8ft. Upper deck, 40 ton capacity, hydra-tail, tandem axle.

2012 TRAILZEZE TE80XT48 VN:1DAHFC727CC020792 48ft. X 102in. Deck, 8ft. Upper deck, 40 ton capacity, hydra-tail, tandem axle.

2012 TRAILZEZE TE80XT48 VN:1DAHFC725CC020791 48ft. X 102in. Deck, 8ft. Upper deck, 40 ton capacity, hydra-tail, tandem axle.

2012 TRAILZEZE TE801-48 VN:1DASFC72XCP020798 48ft. X 102in. Deck, 8ft. Upper deck, 40 ton capacity, sliding tandem axle.

2011 TRAILZEZE TE80HT48 VN:1DAHFC72XCC020575 48ft. X 102in. Deck, 8ft. Upper deck, 40 ton capacity, hydra-tail, tandem axle.

2011 TRAILZEZE TE80HT48 VN:1DAHFC721CC020576 48ft. X 102in. Deck, 8ft. Upper deck, 40 ton capacity, hydra-tail, tandem axle.

2012 LEDWELL LW48 HT2-10-PB

VN:1L9GA72A0CLO33894 48ft. X 102in. Deck, 8ft. Upper deck, 40 ton capacity, hydra-tail, tandem axle.

2011 LEDWELL LW48HT2-48-PB10

VN:1L9GA72A4BLO33282 48ft. X 102in. Deck, 8ft. Upper deck, 40 ton capacity, hydra-tail, tandem axle.

FLOW BOY TRAILERS

1999 FLOWBOY CB4000 VN:1H9SP3734XN101179 triaxle.



1995 FLOWBOY CB4000 VN:1H9SP3739SN102224 triaxle.

FLATBED TRAILERS

(2) 30FT. EXTRA HEAVY MILITARY FLATBED VN:N/A tandem axle. Bill Of Sale Only.

VAN TRAILERS

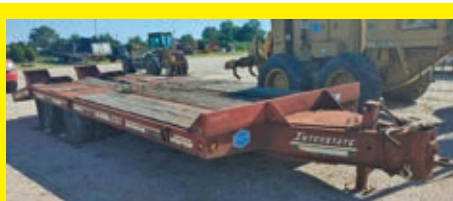
1996 LUFKIN VN:123653 53ft. X 102in. Aluminum van trailer, swing doors, tandem axle.



TRAILMOBILE 45FT. VN:96700 tandem axle. WITH CONTENTS Bill of sale.

15 TAGALONG TRAILERS

(12) NEW DELTA 27TB 16ft. Tilt deck, 4ft. Stationary deck, chain box, electric brakes, (2) 7,000lb axles, HD jack, tandem axle.



2004 INTERSTATE 10 ton capacity, 19ft. Deck, 96in. Width, tandem axle.



1986 HUDSON concrete mixer, triaxle.



EAGER BEAVER VN:S090633 flip down ramps, triaxle.

WATER TRAILER

2008 - WYLIE EXP500S VN:5VUTW13228L000198 gas engine, 500 gallon water tank.

STORAGE TRAILERS

(2) 50FT. VN:N/A contents including: tile flooring & molding. Trailer Sells Bill of Sale Only.

ROLLOFF TRAILER

1991 AMERICAN ARTW44ETLP VN:200018 tandem axle.

4 UTILITY VEHICLES

2016 KUBOTA RTV-X900G-H SN:31773 4x4, diesel engine, EROPS, utility body.

2016 BOBCAT 3400XLD SN:B3FM12427 4x4, diesel engine, OROPS, 4-seater, utility body.

2015 BOBCAT 3400XLD SN:B3FM11285 4x4, diesel engine, OROPS, 4-seater, utility body.

2014 EZ-GO 1600XD CAB SN:NZ9400149 4x4, diesel engine, EROPS, utility body.

AMERICA'S AUCTION COMPANY

TOP NOTCH ESTATE AUCTION

~ Estate of Richard J. Brown & Joan M. Brown ~

*Beautiful Real Estate, Vehicles, Construction Equipment, Tractors, Shop Equipment,
Nice Antiques & Collectibles*

SATURDAY, SEPTEMBER 26TH @ 9:30 AM • TRUXTON, NEW YORK



ADDRESS: 4294 Crains Mills Rd., Truxton,
New York 13158 (Cortland –Cazenovia Area)



AUCTIONEERS NOTE: Everything In This Auction Is The “Best-Of-The-Best” - Plan To Attend For
Quality Throughout; Many Hard To Find Items, Especially @ Auction - Be Sure To Attend!

HIGHLIGHTS INCLUDE: **BEAUTIFUL HOME ON 3 ACRES** with Large Pond, Shop Building On 3-acres, 5-acre Vacant Parcel. Offered Separately & Together – All Selling @ Absolute Auction – **Selling @ 12:30PM. SALE PARCEL A – House Parcel:** Beautiful 4-bedroom home with large rear great room – Addition in rear. Situated beautifully on 5.40-acre lot with 233.77ft. road frontage on south side of Crains Mills Road. Parcel has a beautiful 1-acre pond, that is breath taking and super clean. Parcel also has a nice 2-car detached garage, another smaller storage barn, the home has been updated completely throughout the years. Home has a 1st floor bedroom, 2 ½ baths – Two are newer with handicap access, newer kitchen, large rear 20'x36' open – cathedral rear addition that is awesome with fancy stone corner fireplace, hardwood floors in most of home. Large dining room/living room – open floor plan. Must see inside to appreciate! All on 5.4-acres with great views and the beautiful pond! **SALE PARCEL B: 1.94-acre parcel.** Large 130'x35' Shop Building with 3 Garage Bays in front; Approx. 30'x50'. Insulated Shop w/high ceilings and 30'x60' Dry Storage area. Approx. 300ft. road frontage. Borders the creek for recreation. A Nice Building on A Nice Lot! **SALE PARCEL C: Vacant Lot on 5.46-acres.** 331.10ft. road frontage; Open Lot borders the creek, great for recreation! Parcels will be offered separately and in combination, whichever is greater; Parcels A & B will be offered in combination, Then A, B & C will be offered in combination. Property Sells Absolute to the highest bidder – Regardless Of Price! Home Sold As-Is, Where-Is, How-Is, No Warranties. Any tests wanted or needed must be done prior to auction. **OPEN HOUSES FOR PROPERTY:** Sun. Sept. 20th from 3PM-5PM; Tues., Sept. 22nd from 5:30PM-7PM; or Day Of Auction.

THE BEST OF THE BEST - CONSTRUCTION EQUIPMENT, TRACTORS, MOWERS, VEHICLES & SHOP EQUIPMENT – Selling @ 1:30PM: Dozer: JD 450J(6-Way Blade, 200 one-owner hrs., as new), Backhoe: JD 310G(cab, 4wd, ext. hoe, 1800 orig. hours, super nice), Tractors & Rotary Mower, Rototiller: Massey Ferguson 583(4wd, fender model w/rops, 400 orig. hours, 85hp, like new), Cub Cadet/Yanmar 3200 w/60" Belly Mower(4wd, 200 orig. hours, like new), Land Pride 8' Rotary Mower(3pth, heavy duty, super nice), Countyline 6' Rototiller(3pth, almost new), **Buick SUV & Chevy Plow Truck:** 2012 Buick Enclave(AWD, pearl white, leather, sunroof, 72k miles, super nice), 2002 Chevy 2500HD Pickup(4wd w/Western plow, 60k orig. miles, real nice), Car Lift, Pressure Washer, Hand and Shop Tools, etc. - **Selling @ 2PM:** Rotary 2-Post 9000lb. Auto Lift(hardly used), Hotsy Steam Jenny(2000psi, nice), Rolling Tool Box, Many Hand Tools, Lincoln Ranger Gas Engine Welder/Generator, Shop Press, Rotating Hardware Bin(4-Tier), Set of Torches, Chains, Binders, Lots of Tools of all types, (4-5)Stihl and other Chainsaws, (3)Antique Anvils, Lots of other nice Tools and Misc. items. Excellent Group of Antiques and Collectibles of all types - Lots of Antique Tools, Lanterns, Furniture, etc. - **Starting Selling @ 9:30AM,** Selling in-place from PowerPoint: (2)Pedal Small Tool Grinding Wheels(real neat), (2)Marble Top Dressers, (3)Old China Closets, (1)Mission-Style Drop Front Desk, High Back Cherry/Chestnut Bed, Iron Bed, Treadle Sewing Machine, Glass Table, Lots of Glassware – Depression and Carnival, Lane Cedar Chest, **Collectibles:** 50+ Collectible Lanterns of all types, Lots of Antique Tools, Antique Bar Items, Many Old Tin Coke Trays, Lots of Old Crocks and Jugs, Old License Plates, Old Tools of all types, Antique Butter Churn, Old Irons, Old Toys, Mid 1800's Bible, Lots of neat, hard to find items –**More info on our Website:** www.manasseauctions.com. Live Online – Interactive Bidding Available @ www.proxibid.com/manasse.



ALEX LYON & SON

**SALES MANAGERS & AUCTIONEERS, INC.,
BRIDGEPORT, NY 13030**

Phone: (315) 633-2944 • Fax: (315) 633-5635

Go to WWW.LYONAUCTION.COM for more details



MEL MANASSE & SON

AUCTIONEERS & LICENSED REAL ESTATE BROKERS

WHITNEY POINT, N.Y. 13862

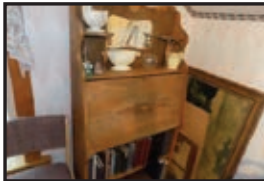
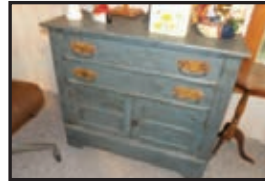
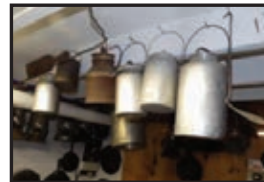
Phone: (607) 692-4540 / 1-800-MANASSE

WWW.MANASSEAUCTIONS.COM

EQUIPMENT & TOOLS



FURNITURE & COLLECTIBLES



ALEX LYON & SON

**SALES MANAGERS & AUCTIONEERS, INC.,
BRIDGEPORT, NY 13030**

Phone: (315) 633-2944 • Fax: (315) 633-5635

Go to **WWW.LYONAUCTION.COM** for more details



MEL MANASSE & SON

AUCTIONEERS & LICENSED REAL ESTATE BROKERS

WHITNEY POINT, N.Y. 13862

Phone: (607) 692-4540 / 1-800-MANASSE

WWW.MANASSEAUCTIONS.COM

ONSITE/VIRTUAL LIVE AUCTION

Please feel free to preview any of our Virtual Live Auction sale sites 5 days before auction day!

SAN ANGELO, TEXAS - TUESDAY, SEPTEMBER 29TH AT 9:30 AM

ADDRESS: 4003 S. Chadbourne Street, San Angelo, TX 76905 (New Sales Site). **NOTE:** This sale will consist of Very Late Model Construction, Utility Equipment, Telescopic Forklifts, Boom & Scissor Lifts from 3 Texas Rental Fleets, plus much more. **SPECIAL NOTE:** This part of the auction will be a Live, In-Person event. Masks required. All people attending must follow CDC guidelines for social distancing and hand-washing. Thank you in advance for adhering to these requirements, we appreciate your cooperation! **SALE SITE PHONE:** (512) 924-6926 Marcus. **TEXAS LICENSE:** #15791 Jack Lyon. **TERMS & CONDITIONS:** "Cash or Company Check" accompanied by current "Bank Letter of Guarantee", made payable to Alex Lyon & Son. Everything Sells "AS IS, "WHERE IS." *The following charges will apply on all purchases:* (1.) For each unit \$35,001.00 and above, a 5.95% administration fee will be assessed when paying with cash or good check. (The standard fee of 8.95% will be assessed when paying with credit card); and (2.) For each unit \$1,001- \$35,000, a 10% administration fee will be assessed when paying with cash or good check, and a 13% fee will be assessed when paying with credit card. (3.) For each unit \$0- \$1,000, a 12.5% administration fee will be assessed when paying with cash or good check, and a 15.5% fee will be assessed when paying with credit card. ****ONLINE BIDDING: An additional fee of 2.5%, cap of \$700 for each piece.****



FOR BID ONLINE TECHNICAL ASSISTANCE CALL
Proxibid: (855) 636-6461
Nextlot: (919) 361-1111

4 CRAWLER DUMPS



2017 TERRAMAC RT9 SN:9F0284 Cummins diesel engine, 225hp, Cab, air, utility body w/ removable tailgate, post & sides, 18,000lb capacity, 20in. Ground clearance, 27in. Rubber tracks, 8ft. 3in. Machine width over tracks, 631 hours. Extended Service Protection Plan: Powertrain & Hydraulic, Expires 11/30/2021 or 3,000 hours. (please see photos for details.)

2017 TERRAMAC RT9 SN:9F0283 Cummins diesel engine, 225hp, Cab, air, utility body w/ removable tailgate, post & sides, 18,000lb capacity, 20in. Ground clearance, 27in. Rubber tracks, 8ft. 3in. Machine width over tracks, 1,540 hours. Extended Service Protection Plan: Powertrain & Hydraulic, Expires 12/27/2021 or 3,000 hours. (please see photos for details.)



2018 TERRAMAC RT6 SN:6G0007 Cummins diesel engine, 130hp, Cab, air, utility body w/ removable tailgate, post & sides, 12,000lb capacity, 18in. Ground clearance, 23.6in. Rubber tracks, 8ft. 2in. Machine width over tracks, 696 hours. Extended Service Protection Plan: Powertrain & Hydraulic, Expires 8/29/2022 or 3,000 hours. (please see photos for details.)

2018 TERRAMAC RT6 SN:6G0005 Cummins diesel engine, 130hp, Cab, air, utility body w/ removable tailgate, post & sides, 12,000lb capacity, 18in. Ground clearance, 23.6in. Rubber tracks, 8ft. 2in. Machine width over tracks, 580 hours. Extended Service Protection Plan: Powertrain & Hydraulic, Expires 8/30/2022 or 3,000 hours. (please see photos for details.)

15 TELESCOPIC FORKLIFTS

2012 GEHL DL11H-55 SN:DL1155HJD0441478 4x4, diesel engine, OROPS, 11,000lb lift capacity, 55ft. Reach height, front stabilizers.

2012 GEHL RS8-42 SN:RS842JD0517183 4x4, diesel engine, OROPS, 8,000lb lift capacity, 42ft. Reach height.



(5) 2013 GENIE GTH-1056 4x4, diesel engine, OROPS, 10,000lb lift capacity, 56ft. Reach height, front stabilizers.

2012 JLG G12-55A SN:0160044443 4x4, diesel engine, OROPS, 12,000lb lift capacity, 55ft. Reach height, front stabilizers.



2015 JLG G10-55A SN:0160066152 4x4, diesel engine, OROPS, 10,000lb lift capacity, 55ft. Reach height, front stabilizers.



(2) 2013 JLG G9-43A 4x4, diesel engine, OROPS, 9,000lb lift capacity, 42ft. Reach height, 717 hours.



(2) 2014 SKYTRAK 8042 4x4, diesel engine, OROPS, 8,000lb lift capacity, 42ft. Reach height.

(2) 2012 SKYTRAK 8042 4x4, diesel engine, OROPS, 8,000lb lift capacity, 42ft. Reach height.

8 HYDRAULIC EXCAVATORS

2016 KOMATSU PC290LC-11 Komatsu diesel engine, Cab, air, heat, digging bucket w/ hydraulic thumb, long undercarriage.

2016 KOMATSU PC210 Komatsu diesel engine, Cab, air, heat, digging bucket, long undercarriage.

2014 HITACHI ZX210 diesel engine, Cab, air, heat, digging bucket, long undercarriage.

2017 CASE CX130D SN:NGS7D1231 diesel engine, Cab, air, digging bucket.

2014 CASE CX130C SN:NDSAD1175 diesel engine, Cab, air, digging bucket.

2016 LINKBELT 145X3LC SN:LBX145Q6NEHEX1421 diesel engine, Cab, air, reduced tail swing, digging bucket, long undercarriage.

2015 LINKBELT 145X3LC SN:LBX145Q6NDHEX1249 diesel engine, Cab, air, reduced tail swing, digging bucket, long undercarriage.

2014 LINKBELT 80X3 SN:LBX080Q6NEHEX1126 diesel engine, Cab, air, front blade, rubber tracks, digging bucket, 2,557 hours.

MOTOR GRADER

2011 CAT 140M Cat diesel engine, EROPS, air, 14ft. Moldboard, hydraulic sideshift, TIP control, push block, rear ripper.

RUBBER TIRED LOADERS



2014 CAT 950K VN:R4A02477 Cat diesel engine, EROPS, air, heat, quick coupler, GP bucket, 23.5x25 rubber.



2013 CAT 950K VN:R4A01333 Cat diesel engine, EROPS, air, heat, quick coupler, GP bucket, 23.5x25 rubber.

RUBBER TIRED LOADER ATTACHMENT

2013 JRB FORKS SN:AKR25461

5 TRACTOR LOADER BACKHOES

2016 JOHN DEERE 710L SN:299217 John Deere diesel engine, EROPS, air, 4-in-1 front bucket, rear digging bucket.



2017 JOHN DEERE 710K SN:302655 John Deere diesel engine, EROPS, air, 4-in-1 front bucket, rear digging bucket.

2013 JOHN DEERE 310K SN:HDG246541 4x4, John Deere diesel engine, ROPS, GP front bucket, rear digging bucket.

2011 CASE 580N SN:541133 4x4, Case diesel engine, OROPS, GP front bucket, rear digging bucket.

2008 CAT 416E 4x4, Cat diesel engine, OROPS, GP front bucket, rear digging bucket.

CARRY DECK CRANE

BRODERSON IC-200-2F SN:134806 dual fuel engine, OROPS, 15 ton lift capacity, 36ft. Main boom, 15ft. JIB, (4) hydraulic outriggers.

ASPHALT ROLLER

2014 HAMM HD+90IVV SN:2090047 diesel engine, OROPS, 66in. Smooth drum, double drum, vibratory drum, drum drive, water system, 885 hours.

TRENCH ROLLER



2015 BOMAG BMP8500 SN:101720123162 diesel engine, 33.5in. Padsfoot drum, vibratory drum, double drum, drum drive, 1,089 hours.

7 RUBBER TRACKED SKID STEERS

(2) 2014 CAT 289D Cat diesel engine, EROPS, air, auxiliary hydraulics, mechanical quick coupler, rubber tracks, GP bucket.

2012 CAT 299D Cat diesel engine, EROPS, air, auxiliary hydraulics, mechanical quick coupler, rubber tracks, GP bucket.

2016 CAT 279D SN:GTL03083 Cat diesel engine, EROPS, air, auxiliary hydraulics, mechanical quick coupler, rubber tracks, GP bucket.

2016 CAT 279D SN:GTL03073 Cat diesel engine, EROPS, air, auxiliary hydraulics, mechanical quick coupler, rubber tracks, GP bucket.

2016 CAT 279D SN:GTL03068 Cat diesel engine, EROPS, air, auxiliary hydraulics, mechanical quick coupler, rubber tracks, GP bucket.

2015 BOBCAT T650 SN:ALJG13578 diesel engine, rollcage, auxiliary hydraulics, mechanical quick coupler, rubber tracks, GP bucket.

25 SKID STEER ATTACHMENTS

(3) NEW 90IN. BUCKET

(2) NEW 84IN. FORK EXTENSION

(2) NEW 3/4 CUBIC YARD CONCRETE PLACEMENT BUCKET

(2) NEW JBX 4000 48IN. FORKS

(16) NEW ATTACH FRAME

TRENCHER

2012 DITCH WITCH RT45 SN:CMWH314XKC0002368 4x4, diesel engine, ROPS, trencher, push blade, 1,437 hours.

FORKLIFT

HYSTER H20FT SN:4085M diesel engine, OROPS, 11,950lb lift capacity, 3-stage mast, 1,145 hours.

22 BOOM LIFTS

2011 GENIE Z-135/70 SN:Z13511-1375 4x4, diesel engine, 135ft. Platform height, articulating boom, 500lb lift capacity.

2012 GENIE S-125 SN:S12512-3290 4x4, diesel engine, 125ft. Platform height, straight boom, JIB, 500lb lift capacity.

2011 GENIE S-80X SN:S80X11-8986 4x4, diesel engine, 80ft. Platform height, straight boom, 500lb lift capacity.

2014 GENIE S-65 SN:S6014-27383 4x4, diesel engine, 60ft. Platform height, straight boom, 500lb lift capacity.

(3) 2012 GENIE S-65 4x4, diesel engine, 60ft. Platform height, straight boom, 500lb lift capacity.

2014 GENIE S-60X SN:S60X14A-27582 4x4, diesel engine, 60ft. Platform height, straight boom, 500lb lift capacity.

(6) 2013 GENIE S-60X 4x4, diesel engine, 60ft. Platform height, straight boom, 500lb lift capacity.

2012 JLG 800AJ SN:0300155659 4x4, diesel engine, 80ft. Platform height, articulating boom, 500lb lift capacity.

2013 JLG 660SJ SN:0300174108 4x4, diesel engine, 60ft. Platform height, straight boom, JIB, 500lb lift capacity.

2012 JLG 660SJ SN:0300159812 4x4, diesel engine, 66ft. Platform height, straight boom, JIB, 500lb lift capacity.

2014 JLG 600S SN:0300185943 4x4, diesel engine, 60ft. Platform height, straight boom, 500lb lift capacity.

(3) 2013 JLG 600S 4x4, diesel engine, 60ft. Platform height, straight boom, 500lb lift capacity.



2012 JLG 450AJ SN:0300154704 4x4, diesel engine, 45ft. Platform height, articulating boom, JIB, 500lb lift capacity.

10 AIR COMPRESSORS

SULLAIR 1600HAFDTQCA SN:004-151946R Cummins diesel engine, 1,600CFM, trailer mounted.



(5) 2013 SULLAIR P185DPQJDT4I John Deere diesel engine, 185CFM, trailer mounted.



2014 ATLASCOPOC XAS185 SN:HOP046094 diesel engine, 185CFM, trailer mounted.

2013 ATLASCOPOC XAS185JD SN:HOP041766 John Deere diesel engine, 185CFM, trailer mounted.

(2) 2013 DOOSAN C185 diesel engine, 185CFM, trailer mounted.

GENERATOR

2012 MULTIQUIP DCA25USI2XFC SN:8104108 diesel engine, 25KVA, 20KW, trailer mounted.

6 LIGHT PLANTS

2016 MAGNUM PRO MLT3060MV SN:1603374 diesel engine, 4-1,000 watt lightbulbs, 6KW, trailer mounted.

(2) 2015 MAGNUM PRO MLT3060MV diesel engine, 4-1,000 watt lightbulbs, 6KW, trailer mounted.

(3) 2015 MAGNUM PRO MLT6SM diesel engine, 4-1,000 watt lightbulbs, 6KW, trailer mounted.

LOADER LANDSCAPE TRACTOR

2015 CASE 570N EP SN:JGN570NCF726109 4x4, Case diesel engine, OROPS, GP front loader, rear box blade, 2,504 hours.

6 CAB & CHASSIS

UNUSED 2020 FREIGHTLINER M2-106

VN:1FVDCXFCXLH9463 4x4, Cummins B6.7 diesel engine, RDS-3500 automatic transmission, power steering, 120in. CA, 190in. WB, 33,000lb GVWR, dual wheel single axle.

UNUSED 2020 FREIGHTLINER M2-106

VN:1FVDCXFC1LH9464 4x4, Cummins B6.7 diesel engine, RDS-3500 automatic transmission, power steering, 120in. CA, 190in. WB, 33,000lb GVWR, dual wheel single axle.



UNUSED 2020 KENWORTH T370

VN:2NKHJM7XXLM391013 4x4, Paccar PX-7 diesel engine, equipped Allison 3500RDS 5 speed automatic transmission, Fabco TC-237 2-speed transfer case, power steering, a/c, am/fm/bluetooth, power locks, 56 gallon fuel tank, dark slate gray seat, 13,220lb fronts, 21,000lb rears, 125in. CA, 193in. Wheelbase, 5.57 ratio, trailer abs electric supply, 11R22.5 tires, dual wheel single axle.

UNUSED 2020 KENWORTH T370 VN:2NKHJM7X1LM391014

4x4, Paccar PX-7 diesel engine, equipped Allison 3500RDS 5 speed automatic transmission, Fabco TC-237 2-speed transfer case, power steering, a/c, am/fm/bluetooth, power locks, 56 gallon fuel tank, dark slate gray seat, 13,220lb fronts, 21,000lb rears, 125in. CA, 193in. Wheelbase, 5.57 ratio, trailer abs electric supply, 11R22.5 tires, dual wheel single axle.



UNUSED 2019 FORD F450 VN:1FDUF4GT8KEF41631

6.7L Power Stroke V8 diesel engine, 6 speed automatic transmission, engine block heater, cruise control, a/c, tilt/telescope column, power steering, medium earth gray vinyl, transmission power take-off provision, hill start assist, jewel effect headlamps, front & rear stabilizer bar, snow plow package, 60in. Cab to axle, 4.10 ratio, 225/70R19.5 traction tires, dual wheel single axle.

UNUSED 2019 FORD F450 VN:1FDUF4GT8KDA03114

6.7L Power Stroke V8 diesel engine, 6 speed automatic transmission, engine block heater, cruise control, a/c, tilt/telescope column, power steering, medium earth gray vinyl, transmission power take-off provision, hill start assist, jewel effect headlamps, front & rear stabilizer bar, snow plow package, 60in. Cab to axle, 4.10 ratio, 225/70R19.5 traction tires, dual wheel single axle.

DUMP TRUCK

2013 FORD F750 VN:3FRPF7FA5CV200599 diesel engine, automatic transmission, power steering, dump body, dual wheel single axle, 21,450 hours.

4 SCRAP RECYCLING EQUIPMENT

NEW 2 CUBIC YARD SELF DUMPING HOPPER

(2) NEW 1.75 CUBIC YARD SELF DUMPING HOPPER

NEW 1.75 YARD HD TRASH HOPPER

4 PRESSURE WASHERS

(4) NEW EASY KLEEN MAGNUM GOLD gas engine, 4000PSI, 12Volt, 15hp, Hot Water, totally self contained.

60 NEW SUPPORT EQUIPMENT

(3) NEW MUSTANG LF88 PLATE COMPACTOR

(4) NEW MUSTANG MP4800 2IN. SUB PUMP

(2) NEW MUSTANG CV3500 CONCRETE VIBRATOR

(2) NEW HUSKIE B65 ELECTRIC DEMO HAMMER

(2) NEW HUSKIE 11218SDS HAMMER DRILLS

(8) NEW 3 PC. 14IN. PREMIUM DIAMOND BLADES

(8) NEW 25FT., 800AMP EXTRA HD BOOSTER CABLE

(6) NEW 2IN. X 50FT. DISCHARGE WATER HOSE

(4) NEW AUTO DARKENING WELDING HELMET

(3) NEW 1/2IN. DRIVE AIR IMPACT WRENCH KIT

NEW 12V DIESEL FUEL PUMP

(2) NEW 6PK. 14IN. ABRASIVE BLADES

NEW GREASE GUN

(4) NEW 30IN. X 57IN. WELDING TABLE W/SHELF

(2) NEW 29.5IN. X 90IN. HEAVY DUTY WORK BENCH W/ SHELF

(2) NEW 3/8IN. AR500 DUeling TREE SHOOTING TARGET

(4) NEW 3/8IN. AR500 GONG TARGET

(2) NEW 1/2 AR500 STEEL COYOTE SHOOTING TARGET

LYON

FOR SALE/PRIVATE TREATY

LEAR JET 70



2015 BOMBARDIER LEARJET 70

1,854 Hours, 1,581 Cycles



EXTERIOR

Height: 14ft., Wing Span: 50ft. 11in., Length: 56ft.



AVIONICS

Garmin G5000
w/high resolution displays



INTERIOR

Height: 4ft. 11in., Width: 5ft. 1in., Length: 17ft. 8in.
Volume: 363 cu. ft., Internal Baggage: 65 cu. ft.



POWER PLANT

Engines: 2
Engine Mfg.: Honeywell
Engine Model: TFE731-40BR

DISTANCES

Takeoff: 4,440 ft.
Balanced Field Length: 4,230 ft.
Landing: 2,660 ft.

OPERATING WEIGHTS

Max T/O: 21,500 lb.
Max Landing: 19,200 lb.
Operating: 13,715 lb.
Fuel Capacity: 6,062 lb.
Payload W/Full Fuel: 1,973 lb.
Max Payload: 2,285 lb.

ADDITIONAL SPECS

Total Capacity: 9, 2-Crew, 6-Passenger
Lavatory (Acts as additional seat)

Distance: 2,370 Nautical Miles, Top Speed: 514mph



Scan this QR Code to watch video
For more info: jon@lyonauction.com





AUCTION CALENDAR

Go to WWW.LYONAUCTION.COM for START-STOP times on TIMED / VIRTUAL AUCTIONS

1. **LIVE:** Friday, September 18: **ERIE, PENNSYLVANIA:** Acquisition Auction. Late Model Cat, Komatsu, John Deere, Construction Equipment, Pavers, Road Wideners, Utility Equipment, (25) Dump Trucks (2) 2015 Peterbilt (6-axle), (20) 2012-2008 Peterbilt 365 (tri., Alum. Body), Rolloff Trucks, Truck Tractors, Trailers, Attachments & Support.

2. **TIMED:** Saturday, September 19 through Thursday, September 24: **HOUSTON, TEXAS:** Once In A Lifetime Auction. All Exclusive Onsite Timed Auction. United Rentals All Rental Fleet Late Model Equipment. Over 250 Pieces Sell. Ranging from Telescopic, Rough Terrain and Warehouse Forklifts, Tractor Loader Backhoes, Midi & Mini Excavators, Boom & Scissor Lifts, Various Size Air Compressors, Yard Cranes, Utility Tractors, Tractor Loaders, Skid Steers, Sweepers, Trenchers, Welders, Large Quantity Light Plants, Large Quantity Utility Vehicles, Service & Pickup Trucks.

3. **TIMED:** Saturday, September 19 through Saturday, September 26: **ATLANTIC CITY, NEW JERSEY:** Late Model Rental Fleet Support Equipment Auction. New & Used Support, Attachments, Tools, 4-Wheelers, Utility Carts, Small Generators, Small Water Pumps, Plate Compactors, Jumping Jacks, New Office and Storage Containers, New Outdoor Facilities and Much more.

4. **LIVE:** Monday, September 21: **CAMDEN, NEW YORK:** Several Water Pumps, Several Generators Plus an 18 Acre Parcel of Real Estate with Buildings.

5. **NEW DATE: LIVE:** Wednesday, September 23: **ORLANDO, FLORIDA:** Late Model Rental Returns of Cat, JD, Komatsu, Kobelco Komatsu Excavators, Construction Equipment, Utility & Compact Equipment, Aerials, Forklifts, Attachments & Support Equipment.

6. **ONLINE AUCTION -** Friday, September 25: **QUERETARO, MEXICO:** Late Model Cat, Case, John Deere, Volvo Construction Equipment, Aerial Lifts, Forklifts, Trucks and Trailers, Large Quantity Attachments & Support Equipment.

7. **LIVE:** Saturday, September 26: **ATLANTIC CITY, NEW JERSEY:** Very Late Model Rental Fleet Construction, Utility Equipment, Aerials, Forklifts, Trucks, Trailers, Attachments & Support Equipment.

8. **LIVE:** Saturday, September 26: **TRUXTON, NEW YORK:** Estate Auction. Complete Liquidation. Low-houred Construction Equipment, Late Model Vehicles, Collectibles and Antiques, Large Acreage of Real Estate.

9. **LIVE:** Tuesday, September 29: **SAN ANGELO, TEXAS:** Late Model Cat Construction & Utility Equipment, Booms & Scissors, Telescopic Forklifts, Aerials, Trucks, Trailers, Attachments. **HIGHLIGHTS:** (2) Cat 950K, (2) JD 710K, (2) Unused Ford F450 Cab & Chassis, (2) Unused Kenworth Cab & Chassis, (3) Unused Witzco 50-ton Detachables, Telescopic Forklifts, Booms, Scissors, Large Quantity Air Compressors.

10. **LIVE:** Friday, October 9: **LATROBE (DONEGAL), PENNSYLVANIA:** Very Large Cat & Mack Major Job Completion. (2) Cat D8T, (14) 2018-2014 Cat D6T (winch), Cat 336F, (2) Cat 336D, (10) Mack Truck Tractors, Dump Trucks, (20) Equipment Trailers.

11. **LIVE:** Saturday, October 10: **SYRACUSE, NEW YORK:** Retirement Auction. Over 40 Years in Business. Agricultural Equipment, Tractors, All Types of Farm Machinery, Construction Equipment, Trucks, Trailers Plus a Large Quantity of Attachments and Shop Equipment.

12. **LIVE:** Tuesday, October 13: **DALLAS, TEXAS:** Late Model Rental Fleet Construction Equipment Including Hydraulic Excavators, Telescopic & Warehouse Forklifts, Boom & Scissor Lifts, Skid Steers, Crawler Tractors, Rubber Tired Loaders, Air Compressors, Welders, Light Plants, Accessories and more.

13. **LIVE:** Thursday, October 15: **STATEN ISLAND, NEW YORK:** 1-Owner Retirement Auction. Construction Equipment, Aerials, Forklifts, Trucks, Trailers, Shop & Support Equipment.

14. **LIVE:** Friday, October 16: **TORRINGTON (HARTFORD), CONNECTICUT:** Major Job Completion Aggregate & Construction Equipment, Truck Tractors, Dump Trucks, Service & Utility Trucks, Pickups, Various Trailers, Attachments, Support & More.

15. **LIVE:** Saturday, October 17: **PLYMOUTH, MASSACHUSETTS:** Snow and Construction Equipment, Rubber Tired Loaders: Cat 908M, Cat 906M, Tractor Loader Backhoes, Skid Steers, Crawler Tractors, Boom & Scissor Lifts, Telescopic Forklifts, Support, Attachments, Tools All Types of Trucks and Trailers.

16. **LIVE:** Wednesday, October 21: **HOUSTON, TEXAS:** One of the Greatest All-Time Construction Rental Fleet Auctions-2 of the Best Rental Fleets in Texas: Doggett (John Deere Authorized), Bottom Line Rentals: 35 Late Model Service Trucks, Pickups, Vans, Truck Tractors.

17. **LIVE:** Thursday, October 22: **DES MOINES, IOWA:** Very Large Rental Return Auction. Late Model Cat, John Deere, Komatsu, Kobelco Earthmoving Equipment, Aerials, Forklifts, Welders, Air Compressors, Generators and Attachments.

18. **LIVE:** Friday, October 23: **ATLANTA, GEORGIA:** Estate Auction and Rentals of Construction Equipment. Aerials, Trenching Equipment, Service & Pickups and more.

19. **LIVE:** Thursday, October 29: **SYRACUSE, NEW YORK:** Very Large John Deere and Hitachi Rental Construction Equipment and Attachments Auction.

20. **LIVE:** Friday, October 30: **PARKERSBURG, WEST VIRGINIA:** Year End Late Model Cat, Komatsu, John Deere, Construction Equipment, Telescopic Forklifts, Boom & Scissor Lifts, All Types of Trucks: Water, Service, Pickup and Dump Trucks, Truck Tractors and More.

21. **TIMED:** Saturday, October 31 to Thursday, November 5: **SYRACUSE, NEW YORK:** Very Large Construction Equipment Auction. Boom Lifts, Scissor Lifts, Forklifts, Skid Steers, Air Compressors, Light Plants, Generators, Very Large Quantity Support, Attachments, Tagalongs, Pickups and Services Trucks.

22. **LIVE:** Saturday, November 7: **ATTLEBORO, MASSACHUSETTS:** Large Auction: Bucket & Digger Trucks, Vans, Service & Pickup Trucks, Construction & Aerial Equipment, Attachments and Support.

23. **LIVE:** Saturday, November 14: **IOWA CITY, IOWA:** Retirement Auction. Very Clean Construction & Farming Equipment.

24. **TIMED:** Saturday, November 14 to Thursday, November 19: **LIMESTONE, MAINE:** Closure of One of the Original Strategic United States' Air Command Posts-Loring Airforce Base. This Sale Will Consist of Everything Imaginable to be Found on a Former Military Base of 123,000 Acres. Construction Equipment, Trucks, Trailers, an Unbelievable Amount of Support, Tooling, Equipment, Wrenches, Pneumatic Tooling. Only The Best.

25. **LIVE:** Friday, November 20: **NEW MARTINSVILLE, WEST VIRGINIA:** Late Model Cat, John Deere, Komatsu Construction Equipment, Telescopes, Boom & Scissor Lifts, Utility Equipment, Skid Steers, Dump Trucks, Service and Pickups, Attachments and Support.

26. **LIVE:** Wednesday, December 30: **ALBANY, NEW YORK:** Year End Auction. Late Model New Holland, Cat, John Deere, Komatsu Construction Equipment, Aerial Lifts, Boom & Scissor Lifts, Trucks, Trailers, Attachments, Very Large Quantity of Support Equipment.

27-35. Saturday, February 6 to Sunday February 14: **ORLANDO (KISSIMMEE), FLORIDA:** 28th Annual Florida Rental Return Auction of The Finest New and Like-New Construction, Utility Equipment, Aerial Lifts, Forklifts, Landscape Tractors, Cranes, Air Compressors, Welders, Light Plants, Generators, Golf & Utility Carts, Pickups, Service Trucks, Dump Trucks, Truck Tractors, Water Trucks, Plus Very Large Quantity of Attachments, Tires, Tanks and Much More.

NEW DATES TO BE ANNOUNCED

36. **NEW ENGLAND:** Retirement Auction (over 70 years of collecting only the best). One of the Finest Collections of Antique Construction Equipment: Cat, Holt, JD, IH. Ag Equipment, Truck Tractors, Dump Trucks (Everything is Beautiful and Operating), Collectible Toys, Dolls, Large Quantity of Parts. Never Before has there been a Sale Like This.

37. **AUBURN, NEW YORK:** Complete Liquidation of Primarily Cat, John Deere, New Holland Construction Equipment-(3) Cat 621, (2) Cat D8H.

38. **MONTREAL, CANADA:** Late Model Rental Returns, Utility Equipment, Aerials, Trucks, Trailers, Support Equipment.

39. **LINCOLN, MAINE:** Two Major Job Completions. 1 Very Large Forestry Featuring All Types of Logging Equipment and Trucks, and 1 Large Construction Equipment Spread of Later Model Cat, Komatsu, John Deere, New Holland Earthmoving Equipment, Forklifts, Aerials, Generators, Air Compressors and more.

40. **PORTLAND (AUBURN), MAINE:** Retirement Auction. Late Model Cat, Komatsu, Case, Volvo Construction Equipment, Plus Telehandlers, Generators, Boom & Scissor Lifts, Trucks, Trailers and Support.

41. **ATHENS (KNOXVILLE), TENNESSEE:** Four Prime Commercial Properties and Construction Equipment.

42. **RACINE, WISCONSIN:** Late Model Construction Equipment, Aerial Lifts, Forklifts, Trucks, Trailers, Support & Attachments.

43. **FAYETTEVILLE, ARKANSAS:** Late Model Construction, Utility, Compact Equipment, Agricultural Tractors & Farm Implements, Large Quantity Landscape Equipment 0" Radius Movement, Utility Vehicles, 4-Wheelers and more.

MAIN OFFICE

315.633.2944 • 315.633.2872 • 315.633.9544
EVENINGS: (315) 637-8912, FAX: (315) 633-8010

BRANCH OFFICES

ATLANTA, GA	770.537.7386	MOBILE, AL	251.510.1538
BRATTLEBORO, VT	802.490.7894	NASHVILLE, TN	615.922.5197
CHICAGO, IL	312.724.5474	NEW LONDON, CT	860.924.7735
COLUMBUS, OH	614.254.5596	OKLAHOMA CITY, OK	405.438.3188
DALLAS, TX	972.725.7761	PARKERSBURG, WV	304.699.3050
DENVER, CO	515.414.2868	RACINE, WI	262.886.2778
DES MOINES, IA	720.277.0263	ST. LOUIS, MO	314.570.4127
FORT WORTH, TX	817.807.2761	TAMPA, FL	813.777.3273
HARRISBURG, PA	717.836.0919	WASHINGTON, DC	202.888.6003
HOUSTON, TX	832.450.3910	MONTREAL, CA	514.949.7500
LAS VEGAS, NV	702.475.4992	OTTAWA, ON	514.916.4656

FOLLOW US:   

FINANCING AVAILABLE FOR PRE-APPROVED PURCHASERS: You must have prior written approval!

PATRIOT FINANCIAL LLC: Your one stop shop for all of your auction and equipment needs. For Immediate or pre-auction approval please call Customer Service at 866-633-6003 or you may apply on line with our secure site at www.patriotfinancialllc.com. You may also visit us at certain auctions to get your on-site approval. We do 100% financing, with no age restrictions and our minimum loan amount is \$5,000.00. We welcome new start-up business.

STREAMLINE FINANCIAL SERVICES is a nationally recognized lending specialist working with auction companies and vendors on a daily basis to assist their customers obtain financing for equipment. We offer a variety of financial solutions for light duty to heavy duty, titled equipment (trucks and trailers) to all non-titled equipment (yellow iron, aerial lifts, chippers, skid steers, etc). The representatives at Streamline Financial are experts in finding the best financial program for construction and transportation equipment. We have a solution for all levels of credit from A+ to challenged, and also offer Line of Credit and Working Capital programs to complement your businesses cash flow constraints. Please call Customer Service at 440-358-5060.

OAKMONT CAPITAL SERVICES, LLC is a fast, affordable, reputable solution to financing. Founded in 1998 by Managing Members Joe Leonard, CLFP and Megan Zoba. Oakmont Capital Services (OCS) is a direct lender, providing commercial equipment financing and working capital throughout all 50 states. The professional financing staff at OCS has the combined experience of over 250 years in the industry and specializes in both titled and non-titled equipment funding. For over 20 years, we've been helping customers secure financing while offering quick turnarounds, no down payments, application only financing, E-docs for speedy processing plus A, B, and C credit options. Call Mike Macy, Business Development Officer at 315-744-3626 for pre-approval.

SMART BUSINESS CREDIT & LEASING: For instant credit approvals, contact Customer Service at 800-798-6862, or visit our on-site trailer at select auctions. Also available is a secure online application: www.SmartBusinessCredit.com 100% financing or leasing & customized financial packages available (\$10,000 minimum).

SALES TAX: All sales are subject to sales tax.

SALES TAX EXEMPTIONS: Buyers with a VALID exemption certificate are not required to pay sales tax for equipment and miscellaneous, but MUST present a copy of their certificate at time of registration at EACH SALE.

EXPORTERS: If you take possession of your purchase in the United States, you must pay sales tax. You must provide the following in order not to be charged: Bill of Lading - All export purchases must be removed by a trucking company. The trucking company will provide a Bill of Lading with the purchases listed.

NOTE: No items will be released without this document or you may pay tax and be reimbursed once the Bill of Lading or a Dock Receipt is received.

MOTOR VEHICLES AND TRAILER EXEMPTIONS: Specific for each state. Please call office for exemption details.



7697 ROUTE 31, PO BOX 610
BRIDGEPORT, NY 13030

PRESORT
FIRST CLASS
U.S. POSTAGE
PAID
ROCHESTER, NY
PERMIT No. 944

All information contained in this brochure was derived from sources believed to be correct, but not guaranteed. We shall not be held liable for any typographical errors or inaccuracies in the content of this brochure. All announcements made day of sale supersede any printed material.



PLEASE SCAN
QR CODE
FOR UP-TO-DATE
CALENDAR AND
EQUIPMENT LISTS

ATLANTIC CITY, NEW JERSEY

TIMED AUCTION

SUPPORT EQUIPMENT,
ATTACHMENTS, STORAGE
CONTAINERS & BUILDINGS AND MORE...

**SATURDAY, SEPTEMBER 19TH AT 8:00 AM -
CLOSES SATURDAY, SEPTEMBER 26TH AT 5:00 PM**

ONSITE/VIRTUAL LIVE AUCTION

SATURDAY, SEPTEMBER 26TH AT 9:00 AM

LATE MODEL RENTAL FLEET CONSTRUCTION EQUIPMENT AUCTION

HercRentals™



**VERY LATE MODEL RENTAL FLEET
CONSTRUCTION, UTILITY EQUIPMENT,
AERIALS, FORKLIFTS, TRUCKS, TRAILERS**



SPECIAL NOTE: This part of the auction will be a **Live, In-Person event**. Masks required. All people attending must follow CDC guidelines for social distancing and hand-washing. Thank you in advance for adhering to these requirements, we appreciate your cooperation!

SAN ANGELO, TEXAS

TUESDAY, SEPTEMBER 29TH AT 9:30 AM

ONSITE/VIRTUAL LIVE AUCTION RENTALS RENTALS RENTALS LATE MODEL CONSTRUCTION EQUIPMENT AUCTION

**LATE MODEL CAT CONSTRUCTION & UTILITY EQUIPMENT,
BOOMS & SCISSORS, TELESCOPIC FORKLIFTS, AERIALS,
TRUCKS, TRAILERS, ATTACHMENTS**



SPECIAL NOTE: This part of the auction will be a **Live, In-Person event**. Masks required. All people attending must follow CDC guidelines for social distancing and hand-washing. Thank you in advance for adhering to these requirements, we appreciate your cooperation!

315.633.2944

lyonauction.com

lyonauctionlive.com

lyonmexico.com