

CELEBRATING 50 YEARS



SALES MANAGERS & AUCTIONEERS

BIG ENOUGH FOR  
THE INDUSTRY LEADERS,  
YET PERSONAL ENOUGH  
FOR AMERICA'S FARMER.

AMERICA'S  
AUCTION COMPANY

NEW ORLEANS, LOUISIANA

OPENS: TUE., JANUARY 17<sup>TH</sup> AT 12:00 PM - CLOSES: TUE., JAN 31<sup>ST</sup> AT 12:00 PM



**\*\*TIMED AUCTION\*\***



**PART 1 - 2 LOCATIONS**  
**VERY LARGE RENTAL RETURN AUCTION**  
**UNITED RENTALS**

SEVERAL HUNDRED LATE MODEL UNITS, LARGE QUANTITY OF BOOMS, LIGHT PLANTS, SKYJACK & JLG SCISSOR LIFTS, LAYMOR SWEEPERS, COOL ZONE COOLERS, UTILITY VEHICLES



DEER PARK (HOUSTON), TEXAS

OPENS: THU., JANUARY 19<sup>TH</sup> AT 12:00 PM - CLOSES: THU., FEBRUARY 2<sup>ND</sup> AT 12:00 PM

**\*\*TIMED AUCTION\*\***

**PART 2 - 1 LOCATION**  
**VERY LARGE RENTAL RETURN AUCTION**

SEVERAL HUNDRED LATE MODEL UNITS, LARGE QUANTITY OF BOOMS, LIGHT PLANTS, SKYJACK & JLG SCISSOR LIFTS, LAYMOR SWEEPERS, COOL ZONE COOLERS, UTILITY VEHICLES



**ALEX LYON & SON SALES MANAGERS & AUCTIONEERS, INC.**

2023

7697 ROUTE 31, PO BOX 610, BRIDGEPORT, NY 13030 315-633-2944 FAX: 315-633-8010 LYONAUCTION.COM

## \*\*TIMED AUCTION\*\*

Please feel free to preview any of our Live or Timed Auction sale sites 5 days before auction day!

### NEW ORLEANS, LOUISIANA

**OPENS: TUE., JANUARY 17<sup>TH</sup> AT 12:00 PM - CLOSES: TUE., JAN 31<sup>ST</sup> AT 12:00 PM**

**ADDRESS: LOCATION 1:** 620 Mane Street, West Monroe, LA 71292. **LOCATION 2:** 10385 E Airline Hwy, St Rose, LA 70087 **NOTE:** United Rentals, at this particular time is selling Active Rental Ready Equipment that is being replaced by Brand New. **SALE SITE PHONE:** (315) 633-2944. **LOUISIANA AUCTION LICENSE:** AB-395. **TERMS & CONDITIONS: UPDATE:** All items must be paid for by Certified Check, Wire Transfer, or Credit Card. "Certified Check" made payable to Alex Lyon & Son. Everything Sells "AS IS, WHERE IS." The following charges will apply on all purchases: (1.) For each unit \$45,001.00 and above, a 5.99% administration fee will be assessed when paying with Cash, Certified Check, or Wire Transfer. (The standard fee of 8.99% will be assessed when paying with credit card); (2.) For each unit \$1,001- \$45,000, a 10% administration fee will be assessed when paying with Cash, Certified Check, or Wire Transfer. (The standard fee of 13% will be assessed when paying with credit card); (3.) For each unit \$0- \$1,000, a 12.5% administration fee will be assessed when with Cash, Certified Check, or Wire Transfer. (The standard fee of 15.5% will be assessed when paying with credit card). **\*\*Please NOTE: An additional fee may be assessed when bidding online\*\*** The Bidder is responsible for knowing which item he/she is bidding on. If he/she is unsure, he/she should inquire or not bid. When you become the winning bidder at auction you have effected a contract and will be expected to pay for items in which you were evidenced to be the successful bidder. Auctioneer will not honor "mistakes".



FOR BID ONLINE TECHNICAL ASSISTANCE CALL  
Proxibid: (855) 636-6461  
Nextlot: (919) 361-1111

THE FOLLOWING ITEMS ARE LOCATED AT TWO SALE SITE LOCATIONS:  
LOCATED: 620 MANE ST.  
WEST MONROE, LA 70087.

LOCATED: 10385 AIRLINE HIGHWAY  
SAINT ROSE LA, 70087.  
PICKUP: MONDAY-FRIDAY 8AM-3PM.  
EDDIE 770-537-7386

### 8 ROUGH TERRAIN CRANES



**LOT 153: 2012 BRODERSON IC-80-3J** SN:63955680 diesel engine, OROPS, 9 ton lift capacity, 40ft. Reach height, outriggers, 4-wheel steering, 1,583 hours..

**LOT 154: 2012 BRODERSON IC-80-3J** SN:63761180 diesel engine, OROPS, 9 ton lifting capacity, 40ft. Reach height, outriggers, 4-wheel steering, 2,145 hours.



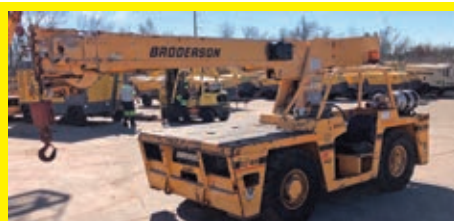
**LOT 155: 2011 BRODERSON IC-80-3J** SN:63663980 diesel engine, OROPS, 9 ton lifting capacity, 40ft. Reach height, outriggers, 4-wheel steering, 2,714 hours.



**LOT 182: 2010 BRODERSON IC-80-3G** SN:608861 diesel engine, OROPS, 9 ton lift capacity, 40ft. Reach height, outriggers, 4-wheel steering, 1,624 hours.



**LOT 183: 2008 BRODERSON IC-80-3G** SN:605577 diesel engine, OROPS, 9 ton lift capacity, 40ft. Reach height, outriggers, 4-wheel steering, 2,891 hours.



**LOT 251: BRODERSON IC-80-3G** SN:00578329 diesel engine, OROPS, 9 ton lift capacity, 40ft. Reach height, outriggers, 4-wheel steering.



**LOT 252: BRODERSON IC-80-3G** SN:565224 diesel engine, OROPS, 9 ton lift capacity, 40ft. Reach height, outriggers, 4-wheel steering.



**LOT 253: BRODERSON IC80-3G** SN:546730 dual fuel engine, OROPS, 9 ton lift capacity, 40ft. Reach height, outriggers, 4-wheel steering, 2,517 hours.

### 7 BOOM LIFTS



**LOT 156: 2013 GENIE ZX-135/70** SN:ZX13513-2075 4x4, diesel engine, 135ft. Platform height, articulating boom, 500lb lift capacity.



**LOT 157: 2011 GENIE ZX-135/70** SN:Z13511-1467 4x4, diesel engine, 135ft. Platform height, articulating boom, 500lb lift capacity.



**LOT 176: 2012 GENIE Z80/60** SN:4127 4x4, diesel engine, 80ft. platform height, articulating boom, 500lb lift capacity.





**LOT 175: 2014 GENIE S-125** SN:S12514D-807 4x4, diesel engine, 120ft. Platform height, straight boom, JIB, 500lb lift capacity.



**LOT 233: 2012 JLG 1250AJP** SN:0300156224 4x4, diesel engine, 125ft. Platform height, articulating boom, JIB, 500lb lift capacity.



**LOT 234: 2011 JLG 1200SJP** SN:0300151173 4x4, diesel engine, 120ft. Platform height, straight boom, JIB, 500lb lift capacity.



**LOT 235: 2010 JLG 1200SJP** SN:0300141338 4x4, diesel engine, 120ft. Platform height, straight boom, JIB, 500lb lift capacity.

## 9 SCISSOR LIFTS



**LOT 158: 2015 JLG 4069LE** SN:0200243056 electric powered, 40ft. Platform height, slide out deck, 500lb lift capacity, 358 hours.



**LOT 159: 2015 JLG 4069LE** SN:0200248488 electric powered, 40ft. Platform height, slide out deck, 500lb lift capacity, 413 hours.

**LOT 177: 2014 JLG 4069LE** SN:200234908 electric powered, 40ft. Platform height, slide out deck, 500lb lift capacity, 504 hours.



**LOT 178: 2014 JLG 4069LE** SN:0200225843 electric powered, 40ft. Platform height, slide out deck, 500lb lift capacity, 437 hours.



**LOT 160: 2016 SKYJACK SJIII4626** SN:70029017 electric powered, 26ft. Platform height, slide out deck, 500lb lift capacity, 156 hours.



**LOT 161: 2016 SKYJACK SJIII4626** SN:70029020 electric powered, 26ft. Platform height, slide out deck, 500lb lift capacity, 206 hours.



**LOT 179: 2015 SKYJACK SJIII4626** SN:70023641 electric powered, 26ft. Platform height, slide out deck, 500lb lift capacity, 201 hours.



**LOT 180: 2014 SKYJACK SJIII4626** SN:70019153 electric powered, 26ft. Platform height, slide out deck, 500lb lift capacity, 201 hours.



**LOT 181: 2013 SKYJACK SJIII4626** SN:70014219 electric powered, 26ft. Platform height, slide out deck, 500lb lift capacity, 193 hours.

## 4 TRENCHERS



**LOT 140: 2016 DITCH WITCH RT45** SN:CMWRT45XVH0003424 4x4, diesel engine, ROPS, push blade, trencher, 678 hours.



**LOT 141: 2016 DITCH WITCH RT45** SN:03435 4x4, diesel engine, ROPS, push blade, trencher, 832 hours.



**LOT 142: 2016 DITCH WITCH RT45** SN:CMWRT45XPG0003237 4x4, diesel engine, ROPS, push blade, trencher, 826 hours.



**LOT 143: 2016 VERMEER RTX130** SN:1UR5071P8H1000120 gas engine, track mounted, 465 hours.

## 61 AIR COMPRESSORS



**LOT 206: 2015 ATLASCOPCO XATS1600** SN:HOP090829 John Deere diesel engine, 1,600CFM, trailer mounted.



**LOT 207: 2013 ATLASCOPCO XAS1600** SN:AAP234695 diesel engine, 1,600CFM, trailer mounted.



**LOT 208: 2013 ATLASCOPCO XAS1600**  
SN:APP187409 diesel engine, 1,600CFM, trailer mounted.



**LOT 209: 2013 ATLASCOPCO XAS1600**  
SN:APP241944 diesel engine, 1,600CFM, trailer mounted.



**LOT 210: 2011 ATLASCOPCO XAS1600CD6**  
SN:APP168482 diesel engine, 1,600CFM, trailer mounted.



**LOT 211: 2011 ATLASCOPCO XAS1600CD6**  
SN:APP154113 Cummins diesel engine, 1,600CFM, trailer mounted.



**LOT 212: 2011 ATLASCOPCO XAS1600CD6**  
SN:APP168610 diesel engine, 1,600CFM, trailer mounted.



**LOT 236: 2011 ATLASCOPCO XAS1600CD6**  
SN:APP143071 diesel engine, 1,600CFM, trailer mounted.



**LOT 237: 2011 ATLASCOPCO XAS1600CD6**  
SN:APP168611 Cummins diesel engine, 1,600CFM, trailer mounted.



**LOT 238: 2010 ATLASCOPCO XAS1600CD6**  
SN:AIP786714 diesel engine, 1,600CFM, trailer mounted.



**LOT 239: 2010 ATLASCOPCO XAS1600CD6**  
SN:APP116370 diesel engine, 1,600CFM, trailer mounted.



**LOT 240: 2010 ATLASCOPCO XAS1600CD6**  
SN:APP117929 Cummins diesel engine, 1,600CFM, trailer mounted.



**LOT 263: 2009 ATLASCOPCO XAS1600CD6**  
SN:AIP784138 Cummins diesel engine, 1,600CFM, trailer mounted.



**LOT 264: 2017 ATLASCOPCO XAS900** SN:HOP081598 diesel engine, 900CFM, trailer mounted.



**LOT 265: 2016 ATLASCOPCO XATS750JD7**  
SN:HOP081558 John Deere diesel engine, 750CFM, trailer mounted.



**LOT 266: 2015 ATLASCOPCO XATS750**  
SN:HOP081275 John Deere diesel engine, 750CFM, trailer mounted.



**LOT 267: 2014 ATLASCOPCO XATS750JD**  
SN:HOP081230 John Deere diesel engine, 750CFM, trailer mounted.



**LOT 268: 2014 ATLASCOPCO XATS750JD**  
SN:HOP081228 John Deere diesel engine, 750CFM, trailer mounted.



**LOT 269: 2014 ATLASCOPCO XATS750JD**  
SN:HOP081247 John Deere diesel engine, 750CFM, trailer mounted.



**LOT 147: 2014 ATLASCOPCO XAS750 JDIT4**  
SN:HOP081314 John Deere diesel engine, 750CFM, trailer mounted.





**LOT 148: 2014 ATLASCOPCO XAS750 JDIT4**  
SN:HOP081312 John Deere diesel engine, 750CFM, trailer mounted.



**LOT 149: 2014 ATLASCOPCO XAS750 JDIT4**  
SN:HOP081313 John Deere diesel engine, 750CFM, trailer mounted.



**LOT 150: 2014 ATLASCOPCO XAS750 JDIT4**  
SN:HOP081332 John Deere diesel engine, 750CFM, trailer mounted.



**LOT 151: 2014 ATLASCOPCO XAS750 JDIT4**  
SN:HOP081333 John Deere diesel engine, 750CFM, trailer mounted.



**LOT 152: 2014 ATLASCOPCO XAS750 JDIT4**  
SN:HOP081327 John Deere diesel engine, 750CFM, trailer mounted.



**LOT 217: 2014 ATLASCOPCO XAS750JDIT4**  
SN:HOP081256 John Deere diesel engine, 750CFM, trailer mounted.



**LOT 218: 2014 ATLASCOPCO XAS750JDIT4**  
SN:HOP081257 John Deere diesel engine, 750CFM, trailer mounted.



**LOT 219: 2013 ATLASCOPCO XAS750JDIT4**  
SN:HOP081184 John Deere diesel engine, 750CFM, trailer mounted.



**LOT 220: 2013 ATLASCOPCO XAS750JD**  
SN:HOP081062 John Deere diesel engine, 750CFM, trailer mounted.



**LOT 276: 2010 ATLASCOPCO XAS750CD6**  
SN:HOP080356 diesel engine, 750CFM, trailer mounted.

**LOT 277: 2016 ATLASCOPCO XATS400JDIT4**  
SN:HOP076434 John Deere diesel engine, 400CFM, trailer mounted.

**LOT 278: 2013 ATLASCOPCO XAS400**  
SN:HOP074304 diesel engine, 400CFM, trailer mounted.



**LOT 288: 2018 ATLASCOPCO XAS185KD7 FT4**  
SN:HOP057069 John Deere diesel engine, 185CFM, trailer mounted.



**LOT 289: 2018 ATLASCOPCO XAS185KD7 FT4**  
SN:HOP056619 diesel engine, 185CFM, trailer mounted.



**LOT 290: 2018 ATLASCOPCO XAS185KD7 FT4**  
SN:HOP056494 diesel engine, 185CFM, trailer mounted.



**LOT 291: 2017 CPT CPS185KD7** SN:HOP054269 diesel engine, 185CFM, trailer mounted, 822 hours.



**LOT 135: 2015 ATLASCOPCO XAS185** SN:HOP049216 John Deere diesel engine, 185CFM, trailer mounted.



**LOT 136: 2015 ATLASCOPCO XAS185** SN:HOP049199 John Deere diesel engine, 185CFM, trailer mounted.



**LOT 137: 2015 ATLASCOPCO XAS185** SN:HOP049205 John Deere diesel engine, 185CFM, trailer mounted.



**LOT 138: 2015 ATLASCOPCO XAS185KD7 IT4**  
SN:HOP049636 diesel engine, 185CFM, trailer mounted.



**LOT 139: 2015 ATLASCOPCO XAS185KD7 IT4**  
SN:HOP049285 diesel engine, 185CFM, trailer mounted.





**LOT 188: 2015 ATLASCO PCO XAS185KD7 IT4**  
SN:HOP049080 diesel engine, 185CFM, trailer mounted.



**LOT 189: 2015 ATLASCO PCO XAS185KD7 IT4**  
SN:HOP049082 diesel engine, 185CFM, trailer mounted.



**LOT 190: 2015 ATLASCO PCO XAS185KD7 IT4**  
SN:HOP050311 diesel engine, 185CFM, trailer mounted.



**LOT 191: 2014 ATLASCO PCO XAS185JD**  
SN:HOP045765 John Deere diesel engine, 185CFM, trailer mounted.



**LOT 184: 2016 DOOSAN HP1600WCU-T4FIQ**  
SN:476066UDAAF76 Cummins diesel engine, 1,600CFM, trailer mounted.



**LOT 185: 2015 DOOSAN HP915WCU-T4I**  
SN:894569YKYF26 Cummins diesel engine, 915CFM, trailer mounted.



**LOT 186: 2015 DOOSAN HP915WCU-T4I**  
SN:894561YJYF26 Cummins diesel engine, 915CFM, trailer mounted.



**LOT 187: 2013 DOOSAN HP750WCU-T4I**  
SN:456480UHXE48 Cummins diesel engine, 750CFM, trailer mounted.



**LOT 279: 2015 DOOSAN P425/HP375WCUT4**  
SN:469455UAZF15 Cummins diesel engine, 425CFM, trailer mounted.



**LOT 280: 2015 DOOSAN P425/HP375WCUT4**  
SN:469671UBZF15 Cummins diesel engine, 425CFM, trailer mounted.



**LOT 281: 2015 DOOSAN P425/HP375WCUT4**  
SN:469323UAZF15 Cummins diesel engine, 375CFM, trailer mounted.



**LOT 282: 2014 DOOSAN P425/HP375WCUT4**  
SN:462286UCYF15 Cummins diesel engine, 425CFM, trailer mounted.



**LOT 134: 2014 DOOSAN P425/HP375WCUT4**  
SN:462481UCYF15 Cummins diesel engine, 425CFM, trailer mounted.



**LOT 133: 2014 DOOSAN P425/HP375WCUT4**  
SN:462503UCYF15 Cummins diesel engine, 425CFM, trailer mounted.



**LOT 132: 2014 DOOSAN P425/HP375WCUT4**  
SN:462098UBFY15 Cummins diesel engine, 425CFM, trailer mounted.



**LOT 131: 2014 DOOSAN P425/HP375WCUT4**  
SN:464649UYFY15 Cummins diesel engine, 425CFM, trailer mounted.



**LOT 116: 2018 DOOSAN C185WDZ-T4F**  
SN:484473UBACG07 diesel engine, 185CFM, trailer mounted.



**LOT 115: 2012 INGERSOLL RAND HP1600IQ**  
SN:437359UCWE09 diesel engine, 1,600CFM, trailer mounted.



**LOT 114: 2016 SULLAIR 900RHAFDTQ-CAT**  
SN:201601130061RF Cat diesel engine, 900CFM, trailer mounted.



**LOT 113: 2012 SULLAIR 375HDPQ-JD**  
SN:201201140004 John Deere diesel engine, 375CFM, trailer mounted.



## 83 LIGHT PLANTS



**LOT 169: 2016 MAGNUM PRO MLT5200VCAN-POS**  
SN:1507702 diesel engine, 4-1,000 watt lightbulbs, trailer mounted.



**LOT 170: 2016 MAGNUM PRO MLT5200VCAN-POS**  
SN:1508094 diesel engine, 4-1,000 watt lightbulbs, trailer mounted.



**LOT 171: 2015 MAGNUM PRO MLT4150** SN:1505206  
diesel engine, 4-1,000 watt lightbulbs, trailer mounted.



**LOT 172: 2015 MAGNUM PRO MLT4150** SN:1505204  
diesel engine, 4-1,000 watt lightbulbs, trailer mounted.



**LOT 173: 2015 MAGNUM PRO MLT4150** SN:1501773  
diesel engine, 4-1,000 watt lightbulbs, trailer mounted.



**LOT 174: 2015 MAGNUM PRO MLT4150** SN:1505197  
diesel engine, 4-1,000 watt lightbulbs, trailer mounted.



**LOT 241: 2015 MAGNUM PRO MLT4150** SN:1505196  
diesel engine, 4-1,000 watt lightbulbs, trailer mounted.



**LOT 242: 2015 MAGNUM PRO MLT4150** SN:1505208  
diesel engine, 4-1,000 watt lightbulbs, trailer mounted.



**LOT 243: 2014 MAGNUM PRO MLT4150** SN:1406951  
diesel engine, 4-1,000 watt lightbulbs, trailer mounted.



**LOT 244: 2017 WACKER LTW8K** SN:24251241 diesel  
engine, 4-1,000 watt lightbulbs, trailer mounted.



**LOT 192: 2017 WACKER LTW8K** SN:24264142 diesel  
engine, 4-1,000 watt lightbulbs, trailer mounted.



**LOT 193: 2017 WACKER LTW8K** SN:24254547 diesel  
engine, 4-1,000 watt lightbulbs, trailer mounted.



**LOT 194: 2017 WACKER LTW8K** SN:24265676 diesel  
engine, 4-1,000 watt lightbulbs, trailer mounted.



**LOT 195: 2017 WACKER LTW8K** SN:24257988 diesel  
engine, 4-1,000 watt lightbulbs, trailer mounted.



**LOT 196: 2018 MAGNUM PRO MLT3060**  
SN:7FSBL1416JB788215 diesel engine, 4-1,000 watt  
lightbulbs, trailer mounted.



**LOT 197: 2018 MAGNUM PRO MLT3060**  
SN:7FSBL1412JB788244 diesel engine, 4-1,000 watt  
lightbulbs, trailer mounted.



**LOT 198: 2017 MAGNUM PRO MLT3060MV**  
SN:3001675906 diesel engine, 4-1,000 watt lightbulbs,  
trailer mounted.



**LOT 254: 2017 MAGNUM PRO MLT3060**  
SN:3001627986 diesel engine, 4-1,000 watt lightbulbs,  
trailer mounted.



**LOT 255: 2017 MAGNUM PRO MLT3060**  
SN:3001872882 diesel engine, 4-1,000 watt lightbulbs,  
trailer mounted.



**LOT 256: 2017 MAGNUM PRO MLT3060**  
SN:30011453130 diesel engine, 4-1,000 watt lightbulbs,  
trailer mounted.





**LOT 257: 2017 MAGNUM PRO MLT3060**  
SN:3001912124 diesel engine, 4-1,000 watt lightbulbs, trailer mounted.



**LOT 258: 2017 MAGNUM PRO MLT3060**  
SN:3001867705 diesel engine, 4-1,000 watt lightbulbs, trailer mounted.

**LOT 259: 2017 MAGNUM PRO MLT3060**  
SN:3001872874 diesel engine, 4-1,000 watt lightbulbs, trailer mounted.



**LOT 260: 2017 MAGNUM PRO MLT3060**  
SN:3002246597 diesel engine, 4-1,000 watt lightbulbs, trailer mounted.



**LOT 261: 2017 MAGNUM PRO MLT3060**  
SN:3002255513 diesel engine, 4-1,000 watt lightbulbs, trailer mounted.



**LOT 262: 2017 MAGNUM PRO MLT3060**  
SN:3001627944 diesel engine, 4-1,000 watt lightbulbs, trailer mounted.



**LOT 126: 2016 MAGNUM PRO MLT3060** SN:1604667 diesel engine, 4-1,000 watt lightbulbs, trailer mounted.



**LOT 125: 2016 MAGNUM PRO MLT3060** SN:1601625 diesel engine, 4-1,000 watt lightbulbs, trailer mounted.



**LOT 124: 2016 MAGNUM PRO MLT3060** SN:1604317 diesel engine, 4-1,000 watt lightbulbs, trailer mounted.



**LOT 123: 2016 MAGNUM PRO MLT3060** SN:1605340 diesel engine, 4-1,000 watt lightbulbs, trailer mounted.



**LOT 122: 2016 MAGNUM PRO MLT3060** SN:1604671 diesel engine, 4-1,000 watt lightbulbs, trailer mounted.



**LOT 121: 2016 MAGNUM PRO MLT3060** SN:1605296 diesel engine, 4-1,000 watt lightbulbs, trailer mounted.



**LOT 120: 2016 MAGNUM PRO MLT3060** SN:1600993 diesel engine, 4-1,000 watt lightbulbs, trailer mounted.



**LOT 119: 2016 MAGNUM PRO MLT3060** SN:1604132 diesel engine, 4-1,000 watt lightbulbs, trailer mounted.



**LOT 118: 2016 MAGNUM PRO MLT3060** SN:1604153 diesel engine, 4-1,000 watt lightbulbs, trailer mounted.



**LOT 117: 2016 MAGNUM PRO MLT3060** SN:1604629 diesel engine, 4-1,000 watt lightbulbs, trailer mounted.



**LOT 224: 2016 MAGNUM PRO MLT3060** SN:1604130 diesel engine, 4-1,000 watt lightbulbs, trailer mounted.



**LOT 225: 2016 MAGNUM PRO MLT3060**  
SN:3001142277 diesel engine, 4-1,000 watt lightbulbs, trailer mounted.



**LOT 226: 2016 MAGNUM PRO MLT3060** SN:1604624 diesel engine, 4-1,000 watt lightbulbs, trailer mounted.



**LOT 227: 2014 MAGNUM PRO MLT3060KV**  
SN:1404312 diesel engine, 4-1,000 watt lightbulbs, trailer mounted.



**LOT 228: 2019 MAGNUM PRO MLT6SM**  
SN:3004437089 diesel engine, 4-1,000 watt lightbulbs, trailer mounted.





**LOT 229: 2018 MAGNUM PRO MLT6SM**

SN:3002549788 diesel engine, 4-1,000 watt lightbulbs, trailer mounted.



**LOT 285: 2017 MAGNUM PRO MLT6SM**

SN:3002124033 diesel engine, 4-1,000 watt lightbulbs, trailer mounted.



**LOT 295: 2016 MAGNUM PRO MLT6SM** SN:1603915

diesel engine, 4-1,000 watt lightbulbs, trailer mounted.



**LOT 230: 2018 MAGNUM PRO MLT6SM**

SN:3003535496 diesel engine, 4-1,000 watt lightbulbs, trailer mounted.



**LOT 286: 2017 MAGNUM PRO MLT6SM**

SN:3002295554 diesel engine, 4-1,000 watt lightbulbs, trailer mounted.



**LOT 296: 2016 MAGNUM PRO MLT6SM** SN:1604015

diesel engine, 4-1,000 watt lightbulbs, trailer mounted.



**LOT 231: 2018 MAGNUM PRO MLT6SM**

SN:3002945849 diesel engine, 4-1,000 watt lightbulbs, trailer mounted.



**LOT 287: 2017 MAGNUM PRO MLT6SM**

SN:3002015682 diesel engine, 4-1,000 watt lightbulbs, trailer mounted.



**LOT 213: 2015 MAGNUM PRO MLT6SM** SN:1503504

diesel engine, 4-1,000 watt lightbulbs, trailer mounted.



**LOT 232: 2018 MAGNUM PRO MLT6SM**

SN:3003678559 diesel engine, 4-1,000 watt lightbulbs, trailer mounted.



**LOT 292: 2016 MAGNUM PRO MLT6SM**

SN:3001216859 diesel engine, 4-1,000 watt lightbulbs, trailer mounted.



**LOT 214: 2015 MAGNUM PRO MLT6SM** SN:1501287

diesel engine, 4-1,000 watt lightbulbs, trailer mounted.



**LOT 283: 2017 MAGNUM PRO MLT6SM**

SN:3001543632 diesel engine, 4-1,000 watt lightbulbs, trailer mounted.



**LOT 293: 2016 MAGNUM PRO MLT6SM** SN:1604001

diesel engine, 4-1,000 watt lightbulbs, trailer mounted.



**LOT 215: 2016 MAGNUM PRO MLT6SK** SN:1603591

diesel engine, 4-1,000 watt lightbulbs, trailer mounted.



**LOT 284: 2017 MAGNUM PRO MLT6SM**

SN:3002091579 diesel engine, 4-1,000 watt lightbulbs, trailer mounted.



**LOT 294: 2016 MAGNUM PRO MLT6SM** SN:1604195

diesel engine, 4-1,000 watt lightbulbs, trailer mounted.



**LOT 216: 2015 MAGNUM PRO MLT6SK** SN:1506755

diesel engine, 4-1,000 watt lightbulbs, trailer mounted.



**LOT 245: 2020 WACKER LTV6L**

SN:WNCLTV01PPUM08830 diesel engine, 4-1,000 watt lightbulbs, trailer mounted.



**LOT 246: 2018 WACKER LTV6L**

SN:WNCLTV01CPUM02944 diesel engine, 4-1,000 watt lightbulbs, trailer mounted.



**LOT 247: 2018 WACKER LTV6L**

SN:WNCLTV01PPUM02283 diesel engine, 4-1,000 watt lightbulbs, trailer mounted.



**LOT 248: 2018 WACKER LTV6K**

SN:WNCLTV02EPUM04247 diesel engine, 4-1,000 watt lightbulbs, trailer mounted.



**LOT 249: 2018 WACKER LTV6K**

SN:WNCLTV02LPUM04214 diesel engine, 4-1,000 watt lightbulbs, trailer mounted.



**LOT 250: 2018 WACKER LTV6K**

SN:WNCLTV02PPUM02907 diesel engine, 4-1,000 watt lightbulbs, trailer mounted.



**LOT 270: 2018 WACKER LTV6K**

SN:WNCLTV02JPUM03381 diesel engine, 4-1,000 watt lightbulbs, trailer mounted.



**LOT 271: 2018 WACKER LTV6K**

SN:WNCLTV02PPUM02969 diesel engine, 4-1,000 watt lightbulbs, trailer mounted.



**LOT 272: 2018 WACKER LTV6K**

SN:WNCLTV02JPUM02442 diesel engine, 4-1,000 watt lightbulbs, trailer mounted.

**LOT 273: 2018 WACKER LTV6K**

SN:WNCLTV02EPUM05916 diesel engine, 4-1,000 watt lightbulbs, trailer mounted.



**LOT 274: 2018 WACKER LTV6K**

SN:WNCLTV02HPUM04215 diesel engine, 4-1,000 watt lightbulbs, trailer mounted.



**LOT 275: 2018 WACKER LTV6K**

SN:WNCLTV02APUM04217 diesel engine, 4-1,000 watt lightbulbs, trailer mounted.



**LOT 297: 2017 WACKER LTV6K**

SN:WNCLTV02VPUM01164 diesel engine, 4-1,000 watt lightbulbs, trailer mounted.



**LOT 298: 2017 WACKER LTV6K**

SN:WNCLTV02LPUM01698 diesel engine, 4-1,000 watt lightbulbs, trailer mounted.



**LOT 299: 2017 WACKER LTV6K**

SN:WNCLTV02CPUM02295 diesel engine, 4-1,000 watt lightbulbs, trailer mounted.



**LOT 300: 2017 WACKER LTV6K**

SN:WNCLTV02LPUM02219 diesel engine, 4-1,000 watt lightbulbs, trailer mounted.

**LOT 112: 2017 WACKER LTV6K**

SN:WNCLTV02HPUM01153 diesel engine, 4-1,000 watt lightbulbs, trailer mounted.



**LOT 111: 2017 WACKER LTV6K**

SN:WNCLTV02CPUM02250 diesel engine, 4-1,000 watt lightbulbs, trailer mounted.



## 6 SWEEPERS



**LOT 110: 2017 WACKER LTV6K**  
SN:WNCLTV02KPUM02245 diesel engine, 4-1,000 watt lightbulbs, trailer mounted.



**LOT 109: 2017 WACKER LTV6K**  
SN:WNCLTV02HPUM02724 diesel engine, 4-1,000 watt lightbulbs, trailer mounted.



**LOT 108: 2017 WACKER LTV6K**  
SN:WNCLTV02PPUM02230 diesel engine, 4-1,000 watt lightbulbs, trailer mounted.



**LOT 107: 2017 WACKER LTV6K**  
SN:WNCLTV02CPUM01575 diesel engine, 4-1,000 watt lightbulbs, trailer mounted.



**LOT 106: 2017 WANCO WLTC4K6MTO**  
SN:5F13D141XH1005107 diesel engine, 4-1,000 watt lightbulbs, trailer mounted.



**LOT 105: 2017 WANCO WLTC4K6MTO**  
SN:5F13D1411H1005142 diesel engine, 4-1,000 watt lightbulbs, trailer mounted.



**LOT 199: 2016 LAYMOR SM400** SN:36569 diesel engine, EROPS, 8ft. Sweeper, water system, 809 hours.



**LOT 200: 2016 LAYMOR SM400** SN:36981 diesel engine, EROPS, 8ft. Sweeper, water system, 1,113 hours.



**LOT 201: 2015 LAYMOR SM400** SN:36247 diesel engine, EROPS, 8ft. Sweeper, water system, 345 hours.



**LOT 146: 2015 LAYMOR SM400** SN:35708 diesel engine, EROPS, 8ft. Sweeper, water system, 722 hours.



**LOT 145: 2015 LAYMOR SM400 VISTA** SN:36471 diesel engine, EROPS, 8ft. Sweeper, water system, 650 hours.



**LOT 144: 2016 BROCE KR-350** SN:409771 diesel engine, EROPS, 8ft. Sweeper, water system, 489 hours.

## 9 UTILITY VEHICLES



**LOT 163: 2016 CLUB CAR CARRYALL 1700**  
SN:SC1635-669906 4x4, gas engine, OROPS, 4-seater, utility body, 1,549 hours.



**LOT 202: 2016 CLUB CAR CARRYALL 1700** SN:810693 4x4, diesel engine, OROPS, 4-seater, utility body, 1,816 hours.



**LOT 162: 2016 CLUB CAR CARRYALL 1700**  
SN:SD1707803501 4x4, diesel engine, OROPS, 4-seater, utility body, 2,130 hours.



**LOT 164: 2016 CLUB CAR CARRYALL 1700**  
SN:811695 4x4, diesel engine, OROPS, 4-seater, utility body, 1,581 hours.



**LOT 165: 2017 POLARIS RANGER** SN:8051446 4x4, diesel engine, OROPS, 4-seater, utility body, 1,473 hours.



**LOT 203: 2017 CLUB CAR CARRYALL 1700** SN:841117 4x4, diesel engine, OROPS, 4-seater, utility body, 1,557 hours.



**LOT 204: 2017 CLUB CAR CARRYALL 1500**

SN:6849685 4x4, diesel engine, OROPS, utility body, 1,050 hours.



**LOT 205: 2016 CLUB CAR CARRYALL 300**

SN:MC1639-679855 gas engine, OROPS, utility body, 1,022 hours.



**LOT 104: 2016 EZ-GO 1600XD** SN:SZ9500016 4x4, diesel engine, OROPS, utility body, 1,060 hours.

## 4 GOLF CARTS



**LOT 103: 2016 CLUB CAR CARRYALL 100**

SN:SZ1639680245 gas engine, OROPS, utility body, 1,410 hours.



**LOT 102: 2016 CLUB CAR CARRYALL 100**

SN:SZ1639680212 gas engine, OROPS, utility body, 779 hours.



**LOT 101: 2016 CLUB CAR CARRYALL 100**

SN:SZ1646697161 gas engine, OROPS, utility body, 934 hours.



**LOT 100: 2016 CLUB CAR CARRYALL 100**

SN:SZ1639680244 gas engine, OROPS, utility body, 977 hours.

## 10 COOL OFF TRAILERS



**LOT 166: 2016 COOL ZONE 16FT.**

VN:5RHCT1623GH002946 tandem axle.



**LOT 167: 2016 COOL ZONE 16FT.**

VN:5RHCT1623GH002929 tandem axle.



**LOT 168: 2016 COOL ZONE 16FT.**

VN:5RHCT1625GH002799 tandem axle.



**LOT 221: 2016 COOL ZONE 16FT.**

VN:5RHCT162XGH002944 tandem axle.



**LOT 222: 2016 COOL ZONE 16FT.**

VN:5RHCT1627GH002836 tandem axle.



**LOT 223: 2016 COOL ZONE 16FT.**

VN:5RHCT1624GH002941 tandem axle.



**LOT 130: 2016 COOL ZONE 16FT.**

VN:5RHCT162XGH002958 tandem axle.



**LOT 129: 2015 COOL ZONE 16FT.**

VN:5ZOUT1625FP008324 tandem axle.



**LOT 128: 2015 COOL ZONE 16FT.**

VN:5ZOUT1625FP008338 tandem axle.



**LOT 127: 2014 ROAD BOSS 16FT.**

VN:5ZOUT1620EP006978 tandem axle.



**\*\*TIMED AUCTION\*\***

Please feel free to preview any of our Live or Timed Auction sale sites 5 days before auction day!

**DEER PARK (HOUSTON), TEXAS**

**OPENS: THU., JANUARY 19<sup>TH</sup> AT 12:00 PM - CLOSES: THU., FEBRUARY 2<sup>ND</sup> AT 12:00 PM**

**ADDRESS:** 2809 E. 13th Street, Deer Park Texas 77536. **NOTE:** United Rentals, at this particular time is selling Active Rental Ready Equipment that is being replaced by Brand New. **SALE SITE PHONE:** (936) 346-1795 Ernest. **TEXAS LICENSE:** #15791 JACK LYON. **TERMS & CONDITIONS: UPDATE:** All items must be paid for by Certified Check, Wire Transfer, or Credit Card. "Certified Check" made payable to Alex Lyon & Son. Everything Sells "AS IS, WHERE IS." The following charges will apply on all purchases: (1.) For each unit \$45,001.00 and above, a 5.99% administration fee will be assessed when paying with Cash, Certified Check, or Wire Transfer. (The standard fee of 8.99% will be assessed when paying with credit card); (2.) For each unit \$1,001- \$45,000, a 10% administration fee will be assessed when paying with Cash, Certified Check, or Wire Transfer. (The standard fee of 13% will be assessed when paying with credit card); (3.) For each unit \$0- \$1,000, a 12.5% administration fee will be assessed when with Cash, Certified Check, or Wire Transfer. (The standard fee of 15.5% will be assessed when paying with credit card). **\*\*Please NOTE: An additional fee may be assessed when bidding online\*\*** The Bidder is responsible for knowing which item he/she is bidding on. If he/she is unsure, he/she should inquire or not bid. When you become the winning bidder at auction you have effected a contract and will be expected to pay for items in which you were evidenced to be the successful bidder. Auctioneer will not honor "mistakes".



FOR BID ONLINE TECHNICAL  
ASSISTANCE CALL  
Proxibid: (855) 636-6461  
Nextlot: (919) 361-1111

THE FOLLOWING ITEMS ARE LOCATED AT  
2809 E 13TH ST.  
DEER PARK, TX 77571.  
PICKUP: MONDAY-FRIDAY 8AM-3PM.  
ERNEST 936-346-1795.

**4 ROUGH TERRAIN CRANES**

**LOT 118: 2012 SHUTTLELIFT CD3340 T3** SN:321981  
diesel engine, OROPS, 7 ton lift capacity, 33ft. Reach  
height, outriggers, 4-wheel steering, 1,583 hours.



**LOT 119: 2012 BRODERSON IC-80-3J** SN:63695580  
diesel engine, OROPS, 9 ton lifting capacity, 30ft. main  
boom, outriggers, 2,265 hours.



**LOT 144: 2007 BRODERSON IC-80-3G** SN:581681  
Cummins diesel engine, OROPS, 9 ton lift capacity, 40ft.  
Reach height, outriggers, 4-wheel steering, 2,210 hours.



**LOT 145: 2004 BRODERSON IC-80-3G** SN:530359  
diesel engine, OROPS, 9 ton lift capacity, 40ft. Reach  
height, outriggers, 4-wheel steering, 1,744 hours.

**PNEUMATIC ROLLER**

**LOT 146: 2014 HAMM GRW280-10** SN:H2120034  
Deutz diesel engine, OROPS, pneumatic tires.

**TRENCHERS**

**LOT 104: 2016 DITCH WITCH RT45**  
SN:CMWRT45XHH0003430 4x4, diesel engine, ROPS,  
push blade, trencher, 711 hours.



**LOT 105: 2016 VERMEER RTX450**  
SN:1VR4092U0G1003510 4x4, diesel engine, ROPS, push  
blade, trencher, 1,081 hours.

**11 BOOM LIFTS**

**LOT 115: 2014 GENIE S-125** SN:S12514D-712 4x4,  
diesel engine, 125ft. Platform height, straight boom, JIB,  
500lb lift capacity.



**LOT 116: 2014 GENIE S-125** SN:S12514D-839 4x4,  
diesel engine, 125ft. Platform height, straight boom, JIB,  
500lb lift capacity.



**LOT 117: 2012 GENIE S-125** SN:S12512-3379 4x4,  
diesel engine, 125ft. Platform height, straight boom, JIB,  
500lb lift capacity.



**LOT 136: 2012 JLG 860SJ** SN:0300152978 4x4, diesel  
engine, 86ft. Platform height, straight boom, JIB, 500lb  
lift capacity.



**LOT 137: 2011 JLG 800S** SN:0300149617 4x4, diesel  
engine, 80ft. Platform height, straight boom, 500lb lift  
capacity.



**LOT 138: 2010 JLG 800S** SN:0300142962 4x4, diesel engine, 80ft. Platform height, straight boom, 500lb lift capacity.



**LOT 159: 2008 JLG 800S** SN:300134628 4x4, diesel engine, 80ft. Platform height, straight boom, 500lb lift capacity.



**LOT 157: 2014 JLG 1250AJP** SN:0300193534 4x4, diesel engine, 125ft. Platform height, articulating boom, JIB, 500lb lift capacity.



**LOT 158: 2013 JLG 1250AJP** SN:0300173990 4x4, diesel engine, 125ft. Platform height, articulating boom, JIB, 500lb lift capacity.

**LOT 111: 2012 GENIE Z80/60** SN:3582 4x4, diesel engine, 80ft. platform height, articulating boom, 500lb lift capacity.

**LOT 112: 2012 GENIE Z80/60** SN:3806 4x4, diesel engine, 80ft. platform height, articulating boom, 500lb lift capacity.

## 22 SCISSOR LIFTS



**LOT 113: 2016 JLG 4069LE** SN:0200252995 electric powered, 40ft. Platform height, slide out deck, 500lb lift capacity, 271 hours.



**LOT 114: 2016 JLG 4069LE** SN:0200253254 electric powered, 40ft. Platform height, slide out deck, 500lb lift capacity, 301 hours.



**LOT 147: 2016 JLG 4069LE** SN:0200252932 electric powered, 40ft. Platform height, slide out deck, 500lb lift capacity, 281 hours.



**LOT 148: 2016 JLG 4069LE** SN:0200253398 electric powered, 40ft. Platform height, slide out deck, 500lb lift capacity, 309 hours.



**LOT 149: 2015 JLG 4069LE** SN:0200250086 electric powered, 40ft. Platform height, slide out deck, 500lb lift capacity, 364 hours.



**LOT 150: 2015 JLG 4069LE** SN:0200243343 electric powered, 40ft. Platform height, slide out deck, 500lb lift capacity, 510 hours.



**LOT 162: 2015 JLG 4069LE** SN:0200247881 electric powered, 40ft. Platform height, slide out deck, 500lb lift capacity, 349 hours.



**LOT 163: 2014 JLG 4069LE** SN:0200232066 electric powered, 40ft. Platform height, slide out deck, 500lb lift capacity, 520 hours.



**LOT 164: 2014 JLG 4069LE** SN:0200234513 electric powered, 40ft. Platform height, slide out deck, 500lb lift capacity, 355 hours.



**LOT 173: 2014 JLG 4069LE** SN:0200227267 electric powered, 40ft. Platform height, slide out deck, 500lb lift capacity, 371 hours.



**LOT 174: 2016 JLG 2646ES** SN:M200003144 electric powered, 26ft. Platform height, slide out deck, 500lb lift capacity, 637 hours.



**LOT 175: 2016 GENIE GS-4069DC** SN:GS6916F-9618 electric powered, 40ft. Platform height, slide out deck, 500lb lift capacity, 356 hours.



**LOT 176: 2014 MEC 4069ERT** SN:13400129 electric powered, 40ft. Platform height, slide out deck, 500lb lift capacity, 350 hours.







**LOT 127: 2014 MEC 4069ERT** SN:13400127 electric powered, 40ft. Platform height, slide out deck, 500lb lift capacity, 403 hours.



**LOT 128: 2014 MEC 4069ERT** SN:13400174 electric powered, 40ft. Platform height, slide out deck, 500lb lift capacity, 714 hours.



**LOT 129: 2015 SKYJACK SJIII4626** SN:70023978 electric powered, 26ft. Platform height, slide out deck, 500lb lift capacity, 708 hours.



**LOT 130: 2015 SKYJACK SJIII4626** SN:70023662 electric powered, 26ft. Platform height, slide out deck, 500lb lift capacity, 175 hours.



**LOT 131: 2014 SKYJACK SJIII4626** SN:70019041 electric powered, 26ft. Platform height, slide out deck, 500lb lift capacity, 173 hours.



**LOT 179: 2013 SKYJACK SJIII4626** SN:70015263 electric powered, 26ft. Platform height, slide out deck, 500lb lift capacity, 158 hours.



**LOT 180: 2013 SKYJACK SJIII4626** SN:70015257 electric powered, 26ft. Platform height, slide out deck, 500lb lift capacity, 281 hours.

**LOT 151: 2013 SKYJACK SJIII4626** SN:70015234 electric powered, 26ft. Platform height, slide out deck, 500lb lift capacity, 219 hours.

**LOT 172: 2013 SKYJACK SJIII4626** SN:70015270 electric powered, 26ft. Platform height, slide out deck, 500lb lift capacity, 401 hours.

## 17 AIR COMPRESSORS



**LOT 132: 2015 DOOSAN HP1600WCU-T4I** SN:465214UGYE97 Cummins diesel engine, 1,600CFM, trailer mounted.



**LOT 133: 2014 DOOSAN HP1600WCU-T4I** SN:462328UCYE97 Cummins diesel engine, 1,600CFM, trailer mounted.



**LOT 134: 2013 DOOSAN HP1600WCU-IQT4I** SN:455624UGXE97 Cummins diesel engine, 1600CFM, trailer mounted.



**LOT 135: 2013 DOOSAN HP1600WCU-IQT4I** SN:454247UEXE97 Cummins diesel engine, 1600CFM, trailer mounted.



**LOT 152: 2015 DOOSAN HP750WCU-T4F** SN:468733UULYF32 Cummins diesel engine, 750CFM, trailer mounted.



**LOT 153: 2013 ATLASCOPCO XAS 1800 JD7** SN:HOP090604 John Deere diesel engine, 1,800CFM, trailer mounted.



**LOT 154: 2015 ATLASCOPCO XATS1600** SN:HOP090830 John Deere diesel engine, 1,600CFM, trailer mounted.



**LOT 168: 2010 ATLASCOPCO XAS1600CD6** SN:APP137216 Cummins diesel engine, 1600CFM, trailer mounted.



**LOT 169: 2010 ATLASCOPCO XAS1600CD6** SN:APP103655 diesel engine, 1,600CFM, trailer mounted.





**LOT 160: 2010 ATLASCOPCO XAS1600CD6**  
SN:APP118278 Cummins diesel engine, 1,600CFM, trailer mounted.



**LOT 161: 2014 ATLASCOPCO XAS750JD**  
SN:HOP081229 John Deere diesel engine, 750CFM, trailer mounted.



**LOT 170: 2013 ATLASCOPCO XAS750JD**  
SN:HOP081073 John Deere diesel engine, 750CFM, trailer mounted.



**LOT 107: 2014 SULLAIR 1600HAFDTQ-CAT**  
SN:201412170020 Cat diesel engine, 1,600CFM, trailer mounted.



**LOT 108: 2016 SULLAIR 900RHAFDTQ-CAT**  
SN:201601130062RF diesel engine, 900CFM, trailer mounted.

**LOT 171: 2016 SULLAIR 900RHAFDTQ-CAT**  
SN:201601130060RF diesel engine, 900CFM, trailer mounted.



**LOT 109: 2015 SULLAIR 900HAFDTQ-CAT**  
SN:201512090047 Cat diesel engine, 900CFM, trailer mounted.



**LOT 110: 2015 SULLAIR 900XHH-1150RXHA**  
SN:201511180060RF diesel engine, 900CFM, trailer mounted, 1,998 hours.

## GENERATORS



**LOT 139: 2016 ATLASCOPCO QAS90** SN:HOP102955 diesel engine, 90KVA, trailer mounted.



**LOT 140: 2016 ATLASCOPCO QAS90** SN:HOP102957 diesel engine, 90KVA, trailer mounted.

## LIGHT PLANT



**LOT 106: 2016 MAGNUM PRO MLT5200VCAN-POS**  
SN:1508107 diesel engine, 4-1,000 watt lightbulbs, trailer mounted.

## 10 SWEEPERS



**LOT 120: 2016 LAYMOR SM400** SN:37244 diesel engine, EROPS, 8ft. Sweeper, water system, 1,050 hours.



**LOT 121: 2016 LAYMOR SM400** SN:37114 diesel engine, EROPS, 8ft. Sweeper, water system, 457 hours.



**LOT 122: 2016 LAYMOR SM400** SN:36653 diesel engine, EROPS, 8ft. Sweeper, water system, 677 hours.



**LOT 123: 2016 LAYMOR SM400** SN:37256 diesel engine, EROPS, 8ft. Sweeper, water system, 369 hours.



**LOT 155: 2015 LAYMOR SM400** SN:36253 diesel engine, EROPS, 8ft. Sweeper, water system, 461 hours.



**LOT 156: 2015 LAYMOR SM400** SN:36251 diesel engine, EROPS, 8ft. Sweeper, water system, 467 hours.





**LOT 177: 2016 BROCE KR-350** SN:469698 diesel engine, EROPS, 8ft. Sweeper, water system, 857 hours.



**LOT 178: 2016 BROCE KR-350** SN:409770 diesel engine, EROPS, 8ft. Sweeper, water system, 828 hours.



**LOT 181: 2016 BROCE KR-350** SN:409774 diesel engine, EROPS, 8ft. Sweeper, water system, 1,240 hours.



**LOT 182: 2016 BROCE KR-350** SN:409773 diesel engine, EROPS, 8ft. Sweeper, water system, 443 hours.

## 6 UTILITY VEHICLES



**LOT 101: 2017 POLARIS RANGER**  
SN:4XARVAD18H7190027 4x4, diesel engine, EROPS, 4-seater, utility body, 1,478 hours.



**LOT 102: 2017 CLUB CAR CARRYALL 1700**  
SN:846842 4x4, diesel engine, EROPS, 4-seater, utility body, 926 hours.



**LOT 103: 2016 CLUB CAR CARRYALL 1700**  
SN:SD1706801507 4x4, diesel engine, EROPS, 4-seater, utility body, 1,919 hours.



**LOT 141: 2016 CLUB CAR CARRYALL 1700**  
SN:662425 4x4, diesel engine, EROPS, 4-seater, utility body, 2,124 hours.



**LOT 142: 2016 CLUB CAR CARRYALL 300**  
SN:MC1639-679871 gas engine, EROPS, utility body, 2,631 hours.



**LOT 143: 2016 CLUB CAR CARRYALL 300**  
SN:MC1639680316 gas engine, EROPS, utility body, 1,041 hours.

## 6 COOL OFF TRAILERS



**LOT 124: 2016 COOL ZONE 16FT.**  
VN:5RHCT162XGH002989 tandem axle.



**LOT 125: 2016 COOL ZONE 16FT.**  
VN:5RHCT1626GH002939 tandem axle.



**LOT 126: 2016 COOL ZONE 16FT.**  
VN:5RHCT1625GH002947 tandem axle.



**LOT 165: 2016 COOL ZONE 16FT.**  
VN:5RHCT1629GH002899 tandem axle.



**LOT 166: 2016 COOL ZONE 16FT.**  
VN:5RHCT1621GH002900 tandem axle.



**LOT 167: 2016 BROCK TRL 16FT.**  
VN:1B9US1627GB632090 tandem axle.

## SUPPORT EQUIPMENT



**LOT 100: 2014 INGERSOLL RAND HH200 ROTARY SCREW AIR COMPRESSOR** SN:TS4911U14103



# ANNOUNCING THE 30<sup>TH</sup> ANNUAL 10-DAY FLORIDA AUCTION

## Bushnell, Florida 2023

**Saturday, February 4 thru  
Monday, February 13 @ 9:00AM**



**NOW TAKING CONSIGNMENTS**



Site Phone: (407) 239-2700 • FL License: AB-1091 • FL Auctioneer: AU-1548 Jack Lyon • Office: (315) 633-2944 • Fax: (315) 633-5635



Visit **WWW.LYONAUCTION.COM**

**for Complete Equipment List,  
Descriptions and Pictures.**



*America's Auction Company. Big enough for the industry leaders, yet personal enough for America's farmer.*





# AUCTION CALENDAR

**Go to [WWW.LYONAUCTION.COM](http://WWW.LYONAUCTION.COM) for START-STOP times on our TIMED & LIVE AUCTIONS**

1. **TIMED:** Closes- Saturday, January 14, Opens- Friday, December 30: **ALBANY, NEW YORK:** Retirement of Major Company Including Primarily Medium-Sized Excavators, Skid Steers, Aerial Lifts, Trucks, Trailers, Very Large Amount of Support & Accessories.
2. **LIVE:** Wednesday, January 25: **DALLAS, TEXAS:** Semi Retirement of One of Texas' Finest Construction Companies. **EARLY HIGHLIGHTS:** Primarily Cat Equipment. (2)Cat D400, (3)Cat 365CL, Cat 345D, (3) Cat 345CL, (3)Cat 336DL, (3)Cat 320DRR, Cat 320CLV, Cat CS533E, Cat CP433E, (4)Takeuchi Excavators, (10)Bobcat and (1)Takeuchi Skid Steers, (3)Broce Sweepers, IR 1600CFM, Atlas Copco 750CFM, (2) Multiquip Generators and more.
3. **LIVE:** Friday, January 27: **QUERETARO, MEXICO:** Late Model Cat, Case, John Deere, Volvo Construction Equipment, Aerial Lifts, Forklifts, Trucks and Trailers, Large Quantity Attachments & Support Equipment.
4. **LIVE:** Saturday, January 28: **COLUMBUS (DELAWARE), OHIO:** Large Cat, John Deere Construction & Agricultural Equipment Auction. Construction Equipment, Ag Tractors, Aerial Lifts, Forklifts, Trucks & Trailers. **HIGHLIGHTS:** (12)John Deere Lease Returns of 125HP - 300HP Agricultural Tractors.
5. **TIMED:** Closes- Tuesday, January 31, Opens- Tuesday, January 17: **NEW ORLEANS, LOUISIANA:** PART 1. Very Large Rental Return Auction. Several Hundred Late Model Units, Large Quantity of Booms JLG 1250, JLG 1200, JLG 800, Genie S125, Doosan HP1600, Atlas Copco 1600, Atlas Copco 750CFM, Atlas Copco 185CFM, Sullivan 900CFM, Broderson IC80 Cranes, Large Quantity Magnum Light Plants, Large Quantity Skyjack & JLG Scissor Lifts, Laymor Sweepers, Large Quantity Cool Zone Coolers, Utility Vehicles and More.
6. **TIMED:** Closes- Thursday, February 2, Opens- Thursday, January 19: **HOUSTON, TEXAS:** PART 2. Very Large Rental Return Auction. Several Hundred Late Model units, Large Quantity of Booms JLG 1250, JLG 1200, JLG 800, Genie S125, Doosan HP1600, Atlas Copco 1600, Atlas Copco 750CFM, Atlas Copco 185CFM, Sullivan 900CFM, Broderson IC80 Cranes, Large Quantity Magnum Light Plants, Large Quantity Skyjack & JLG Scissor Lifts, Laymor Sweepers, Large Quantity Cool Zone Coolers, Utility Vehicles and More.
- 7-16. **LIVE:** Saturday, February 4 to Monday, February 13: **BUSHNELL, FLORIDA:** 30th Annual 10-Day Rental Return Auction. The Greatest Construction Equipment, Aerial Lifts, Trucks, Trailers, Attachments, Support Equipment on Planet Earth - The Best of the Best.
17. **TIMED:** Closes- Friday, February 24, Opens- Friday, February 10: **RICHMOND, VIRGINIA:** Job Completion. Large Mack & Peterbilt Truck Tractors, Dump Trailers, Walking Floor Trailers, Van Trailers. Everything here is in various condition.
18. **LIVE:** Saturday, February 25: **BUFFALO, NEW YORK:** Retirement Auction. Very Special 1-Owner Well-Maintained Construction Equipment & Support Equipment.
19. **LIVE:** Thursday, March 16: **LAS VEGAS, NEVADA:** Very Large Rental Fleet Auction (same time as ConExpo) at the Main Ahern Yard. Sale Consists of Cranes, Boom Trucks, Aerials, Forklifts, All Types of

Construction Equipment, Excavators, Articulated Haul Trucks, Crawler Tractors, Rubber Tired Loaders, Loader Backhoes, Skid Steers, All Types of Utility Equipment, Air Compressors, Welders, Light Plants, Generators, Trucks and Trailers.

20. **LIVE:** Saturday, March 18: **CENTRAL NEW JERSEY:** Very Large Auction Consolidation of Trucks of all Kinds, Construction Equipment, Rolloff Containers, Support Equipment, Military Vehicles.
  21. **LIVE:** Saturday, March 25: **MIDDLETOWN, NEW YORK:** Late Model Cat, John Deere, Case, Bomag Construction and Snow Equipment, Dump Trucks, Truck Tractors, Equipment Trailers, Attachments and Support.
  22. **LIVE:** Friday, March 31: **SARDIS, OHIO:** Very Large Job Completion of 2-Year Job. **HIGHLIGHTS:** All Late Model Cat & Komatsu Articulated Haul Trucks, Mack Triaxle Dump Trucks and Truck Tractors, Hydraulic Excavators, Crawler Tractors, Aerial Lifts, Forklifts, Skid Steers.
  - 23, 24, 25. **LIVE:** Thursday, Friday & Saturday, April 13, April 14, April 15: **3-DAY ANNUAL ATLANTIC CITY CONTRACTORS AUCTION:** Only the Best Construction Equipment, Aerial Lifts, Forklifts, Utility Equipment, All Kinds of Truck Tractors, Dump Trucks, Various Trucks, Trailers, Large Quantity Support and Accessories.
  26. **LIVE:** Friday, April 28: **NEW ENGLAND:** Something Extra Special. Construction Equipment, Hydraulic Excavators, Vibratory Rollers, Aerial Lifts, Forklifts, Skid Steers, Rubber Tired Loaders, Truck Tractors, Articulated Haul Trucks, Equipment Trailers and more.
  27. **LIVE:** Saturday, April 29: **ALBANY, NEW YORK:** Major Job Completion. Primarily Cat, Komatsu, John Deere, Volvo Earthmoving Equipment, Attachments, Dump Trucks, Truck Tractors, All Types of Trailers.
- NEW DATES TO BE ANNOUNCED**
28. **TORONTO, CANADA:** Late Model Rentals of Agricultural Equipment, Construction Equipment, Attachments, Tools, Support, Various Trucks and Trailers.
  29. **RACINE, WISCONSIN:** Job Completion Auction of Late Model Construction, Aggregate, Utility Equipment, Truck Tractors, Dump Trucks, Service & Pickup Trucks, Trailers, Attachments and Support.
  30. **CHICAGO, ILLINOIS:** Construction Equipment, Aerial Lifts, Forklifts, Truck Tractors, Dump Trucks, Pickups, All Types of Trailers (Equipment & Van), Attachments and Support.
  31. **ATTLEBORO, MASSACHUSETTS:** Large Quantity Late Model Trucks: Pickups, Service, Bucket & Derrick, Construction Equipment, Aerials and Forklifts.
  32. **PARKERSBURG, WEST VIRGINIA:** Very Large, Late Model Construction & Utility Equipment Auction. Construction & Utility Equipment, Accessories, Trucks, Trailers from Dirt Job Completion.
  33. **HOUSTON, TEXAS:** Very Late Model Rental Fleet Construction & Utility Equipment Auction. Aerial Lifts, Forklifts, Air Compressors, Welders, Light Plants, Utility Carts, Pickups, Trailers.

## MAIN OFFICE

315.633.2944 • 315.633.2872 • 315.633.9544  
EVENINGS: (315) 637-8912, FAX: (315) 633-8010

## BRANCH OFFICES

ATLANTA, GA	770.537.7386	NASHVILLE, TN	615.922.5197
BRATTLEBORO, VT	802.490.7894	NEW LONDON, CT	860.924.7735
CHICAGO, IL	312.724.5474	OKLAHOMA CITY, OK	405.438.3188
COLUMBUS, OH	614.254.5596	PARKERSBURG, WV	304.699.3050
DALLAS, TX	972.725.7761	RACINE, WI	262.886.2778
DENVER, CO	720.277.0263	ST. LOUIS, MO	314.570.4127
DES MOINES, IA	515.414.2868	TAMPA, FL	813.777.3273
FORT WORTH, TX	817.807.2761	WASHINGTON, DC	202.888.6003
HARRISBURG, PA	717.836.0919	MONTREAL, QC	579.490.5966
HOUSTON, TX	832.450.3910	OTTAWA, ON	579.490.5966
LAS VEGAS, NV	702.475.4992	QUEBEC CITY, QC	579.490.5966
MOBILE, AL	251.510.1538		

FOLLOW US:  

FINANCING AVAILABLE FOR PRE-APPROVED PURCHASERS: You must have prior written approval

**STREAMLINE FINANCIAL SERVICES** is a nationally recognized lending specialist working with auction companies and vendors on a daily basis to assist their customers obtain financing for equipment. We offer a variety of financial solutions for light duty to heavy duty, titled equipment (trucks and trailers) to all non-titled equipment (yellow iron, aerial lifts, chippers, skid steers, etc). The representatives at Streamline Financial are experts in finding the best financial program for construction and transportation equipment. We have a solution for all levels of credit from A+ to challenged, and also offer Line of Credit and Working Capital programs to complement your businesses cash flow constraints. Please call Customer Service at 440-358-5060.

**SMART BUSINESS CREDIT & LEASING:** For instant credit approvals, contact Customer Service at 800-798-6862, or visit our on-site trailer at select auctions. Also available is a secure online application: [www.Smartbusinesscredit.com](http://www.Smartbusinesscredit.com) 100% financing or leasing & customized financial packages available (\$10,000 minimum).

**PATRIOT FINANCIAL LLC:** Your one stop shop for all of your auction and equipment needs. For immediate or pre-auction approval please call Customer Service at 866-633-8003 or you may apply on line with our secure site at [www.patriotfinancialllc.com](http://www.patriotfinancialllc.com). You may also visit us at certain auctions to get your on-site approval. We do 100% financing, with no age restrictions and our minimum loan amount is \$5,000.00. We welcome new start-up business.

**SALES TAX:** All sales are subject to sales tax.

**SALES TAX EXEMPTIONS:** Buyers with a VALID exemption certificate are not required to pay sales tax for equipment and miscellaneous, but MUST present a copy of their certificate at time of registration at EACH SALE.

**EXPORTERS:** If you take possession of your purchase in the United States, you must pay sales tax. You must provide the following in order not to be charged: Bill of Lading - All export purchases must be removed by a trucking company. The trucking company will provide a Bill of Lading with the purchases listed.

**NOTE:** No items will be released without this document or you may pay tax and be reimbursed once the Bill of Lading or a Dock Receipt is received.

**MOTOR VEHICLES AND TRAILER EXEMPTIONS:** Specific for each state. Please call office for exemption details.



344 S. WARREN STREET, SUITE 201  
SYRACUSE, NY 13202

PRESORTED  
FIRST CLASS MAIL  
U.S. POSTAGE  
PAID  
SYRACUSE, NY  
PERMIT No. 291

All information contained in this brochure was derived from sources believed to be correct, but not guaranteed. We shall not be held liable for any typographical errors or inaccuracies in the content of this brochure. All announcements made day of sale supersede any printed material.



PLEASE SCAN  
QR CODE  
FOR UP-TO-DATE  
CALENDAR AND  
EQUIPMENT LISTS

**NEW ORLEANS, LOUISIANA**  
**OPENS: TUE., JANUARY 17<sup>TH</sup> AT 12:00 PM**  
**CLOSES: TUE., JAN 31<sup>ST</sup> AT 12:00 PM**

**\*\*TIMED AUCTION\*\***

**PART 1 - 2 LOCATIONS**

## VERY LARGE RENTAL RETURN AUCTION UNITED RENTALS

SEVERAL HUNDRED LATE MODEL UNITS, LARGE QUANTITY  
OF BOOMS, LIGHT PLANTS, SKYJACK & JLG SCISSOR LIFTS,  
LAYMOR SWEEPERS, COOL ZONE COOLERS, UTILITY VEHICLES



UNITED RENTALS



**DEER PARK (HOUSTON), TEXAS**  
**OPENS: THU., JANUARY 19<sup>TH</sup> AT 12:00 PM**  
**CLOSES: THU., FEBRUARY 2<sup>ND</sup> AT 12:00 PM**

**\*\*TIMED AUCTION\*\***

**PART 2 - 1 LOCATION**

## VERY LARGE RENTAL RETURN AUCTION

SEVERAL HUNDRED LATE MODEL UNITS, LARGE QUANTITY  
OF BOOMS, LIGHT PLANTS, SKYJACK & JLG SCISSOR LIFTS,  
LAYMOR SWEEPERS, COOL ZONE COOLERS, UTILITY VEHICLES



315.633.2944

[lyonauction.com](http://lyonauction.com)

[lyonauctionlive.com](http://lyonauctionlive.com)

[lyonmexico.com](http://lyonmexico.com)