



SALES MANAGERS & AUCTIONEERS

**BIG ENOUGH FOR
THE INDUSTRY LEADERS,
YET PERSONAL ENOUGH
FOR AMERICA'S FARMER.**

**AMERICA'S
AUCTION COMPANY**

AMARILLO, TEXAS - TUESDAY, JANUARY 19TH AT 10:00 AM

****ONSITE/VIRTUAL LIVE AUCTION****

MAJOR JOB COMPLETION AUCTION

L.A. FULLER & SONS CONSTRUCTION

CONSTRUCTION & EARTHMOVING EQUIPMENT, VARIOUS TYPES OF TRUCKS, TRAILERS ATTACHMENTS AND SUPPORT EQUIPMENT



DELAWARE, OHIO - FRIDAY, JANUARY 22ND AT 9:30 AM

****ONSITE/VIRTUAL LIVE AUCTION****

**VERY LARGE LATE MODEL CONSTRUCTION EQUIPMENT, DUMP TRUCK,
TRUCK TRACTOR & TRAILER AUCTION**

VERY LATE MODEL CAT, JOHN DEERE, KOMATSU RENTALS,
AERIALS, TRUCKS AND TRAILERS



SPECIAL NOTE: These auctions will be a **Live, In-Person event**. Masks required. All people attending must follow CDC guidelines for social distancing and hand-washing. Thank you in advance for adhering to these requirements, we appreciate your cooperation!

ALEX LYON & SON SALES MANAGERS & AUCTIONEERS, INC.

2021

7697 ROUTE 31, PO BOX 610, BRIDGEPORT, NY 13030 315-633-2944 FAX: 315-633-8010 LYONAUCTION.COM

ONSITE/VIRTUAL LIVE AUCTION

Please feel free to preview any of our Virtual Live or Timed Auction sale sites 5 days before auction day!

AMARILLO, TEXAS - TUESDAY, JANUARY 19TH AT 10:00 AM

ADDRESS: 9401 E. Amarillo Blvd., Amarillo, Texas 79108. **NOTE:** Having concluded several jobs at the end of the year, we will sell machines that we will not be using in the 2021 Spring season. **SPECIAL NOTE:** This part of the auction will be a Live, In-Person event. Masks required. All people attending must follow CDC guidelines for social distancing and hand-washing. Thank you in advance for adhering to these requirements, we appreciate your cooperation! **SALE SITE PHONE:** (512) 924-6926 Marcus. **TEXAS AUCTION LICENSE:** #15791 Jack H Lyon. **TERMS & CONDITIONS:** "Cash or Company Check" accompanied by current "Bank Letter of Guarantee", made payable to Alex Lyon & Son. Everything Sells "AS IS," "WHERE IS." *The following charges will apply on all purchases:* (1.) For each unit \$35,001.00 and above, a 5.99% administration fee will be assessed when paying with cash or good check. (The standard fee of 8.99% will be assessed when paying with credit card); and (2.) For each unit \$1,001- \$35,000, a 10% administration fee will be assessed when paying with cash or good check, and a 13% fee will be assessed when paying with credit card. (3.) For each unit \$0- \$1,000, a 12.5% administration fee will be assessed when paying with cash or good check, and a 15.5% fee will be assessed when paying with credit card. ****ONLINE BIDDING: An additional fee of 2.5%, cap of \$700 for each piece.****



FOR BID ONLINE TECHNICAL
ASSISTANCE CALL
Proxibid: (855) 636-6461
Nextlot: (919) 361-1111

ARTICULATED HAUL TRUCK



TEREX 3066C SN:A7341126 6x6, diesel engine, Cab, 30 ton capacity, 23.5R25 rubber.

3 MOTOR GRADERS



CAT 140H SN:9TN00454 Cat 3306 diesel engine, EROPS, air, 14ft. Moldboard, hydraulic sideshift, 14.00-24 rubber.



JOHN DEERE 770D SN:597057 John Deere diesel engine, EROPS, air, 14ft. Moldboard, hydraulic sideshift, rear ripper, 17.5R25 rubber, 2,943 hours.



JOHN DEERE 670B SN:515283 John Deere diesel engine, EROPS, 12ft. Moldboard, 14 x 25 rubber.

3 MOTOR SCRAPERS



CAT 623E SN:6YF00173 Cat diesel engine, OROPS, ejector body, paddle wheels, 29.5 x 25 rubber.



CAT 623E SN:6YF00163 29.5 x 29 rubber, Parts Machine.



CAT 615C SN:5TF00286 Cat 3306 diesel engine, equipped 29.5 x 25 rubber.

3 HYDRAULIC EXCAVATORS



JOHN DEERE 790DLC John Deere diesel engine, Cab, digging bucket, long undercarriage.



KOMATSU PC300LC-8 SN:A90176 Komatsu diesel engine, Cab, 32in. Pads, 48in. Digging bucket, long undercarriage.

2013 KOMATSU PC290LC SN:25435 Komatsu diesel engine, Cab, air, auxiliary hydraulics, Digging bucket, long undercarriage.

RUBBER TIRED EXCAVATOR



GRADALL G3WD Cummins diesel engine, Cab, 60in. Digging bucket, 385/65R22.5 tires, 29,025 miles.

HYDRAULIC HAMMER



OKADA

EXCAVATOR ATTACHMENT

UNUSED QUICK COUPLER for CAT 311/312/314 65MM PINS ("312A" LINKAGE) - (250 KGS / 550 LBS).

6 RUBBER TIRED LOADERS



2018 KOMATSU WA320-8 SN:A38323 Komatsu diesel engine, EROPS, air, heat, hydraulic quick coupler, GP bucket.



2014 CAT 930K Cat diesel engine, EROPS, Lincoln lube system, quick coupler, GP bucket.



2012 JOHN DEERE 644K SN:BE642054 John Deere diesel engine, EROPS, air, GP bucket, 23.5R25 rubber.



JOHN DEERE 624K SN:632077 John Deere diesel engine, EROPS, air, GP bucket, 20.5R25 rubber.



2015 WACKER 1150 diesel engine, Cab, high flow auxiliary hydraulics, skid steer style quick coupler, GP bucket, 1,425 hours.



KAWASAKI 80ZV-2 SN:5429 Cummins diesel engine, EROPS, air, GP bucket, 23.5 x 25 rubber.

5 CRAWLER TRACTORS



2012 CAT D6NXL SN:AKM02212 Cat diesel engine, EROPS, air, heat, am/fm radio, 6 way blade, 34in. Pads. 6 way blade, long track frame.
CAT D6NXL SN:AKM02212 Cat diesel engine, EROPS, 6 way blade, long track frame.
CAT D6NXL SN:ALY00685 Cat diesel engine, EROPS, air, 6 way blade, wide pads.
CAT D6KLGP SN:DHA00879 Cat diesel engine, EROPS, air, sweeps, rear screen, rear hydraulics, 6 way blade, GPS ready.



CASE 450B SN:2788009 OROPS, 6 way blade, 14in. Pads. No Engine.

TRACTOR LOADER BACKHOES

2013 CASE 580N SN:NCC560795 Case diesel engine, OROPS, GP front bucket, rear digging bucket, 2,660 hours.
2012 JOHN DEERE 310K SN:218087 4x4, John Deere diesel engine, OROPS, GP front bucket, rear digging bucket.

MILLING MACHINE



ROADTEC RX-45 SN:RX-45-107 Cat diesel engine, discharge hopper, 843 hours.

ASPHALT PAVER

CEDARAPIDS CR461 GREYHOUND SN:44945 Cummins diesel engine, 18in. Pads.

SHUTTLE BUGGY



ROADTEC SB-2500B SN:SB2500B-552 John Deere diesel engine, load hopper, discharge conveyor, 21.00-25 tires.

ASPHALT CHIP SPREADER



KOLRING FLAHERTY SN:72003 Detroit diesel engine, 13ft. Hopper.

ASPHALT EQUIPMENT



CUSTOM BUILT HOT OIL TRAILER trailer mounted.

3 ASPHALT ROLLERS



BOMAG BW205AP SN:109A22901522 Cummins diesel engine, OROPS, 84in. Smooth drum, double drum, vibratory drum, drum drive, water system.



INGRAM SN:442782D86 Detroit diesel engine, 45in. Front drum, 20in. Rear drum.



HAMM DV 8 SN:36728 Deutz diesel engine, OROPS, 66in. Smooth drum, vibratory drum, double drum, drum drive, water system, 1,835 hours.

4 VIBRATORY ROLLERS



CAT CP563E SN:CNT00470 Cat diesel engine, OROPS, 84in. Padsfoot drum, vibratory drum, drum drive, 23.1 x 26 rubber.

2012 HAMM 3410P diesel engine, OROPS, 66in. Padsfoot drum, vibratory drum, drum drive.

DYNAPAC CA262PD SN:67620653 Cummins diesel engine, OROPS, hydrostatic drive, 84in. Padsfoot drum, vibratory drum, drum drive, push blade, 3,165 hours.



INGERSOLL RAND SD70D SN:159912 Cummins diesel engine, OROPS, 66in. Smooth drum, vibratory drum, drum drive, 14.9 x 24 rubber.

PNEUMATIC ROLLERS

HYSTER C530A diesel engine. Parts Only.



HYSTER C530A SN:2920Y Parts Machine.

SOIL COMPACTOR



REX PACTOR 3-35C SN:HE-457 Cummins diesel engine, OROPS, 48in. Front drum, 24in. Rear drums, push blade.

SOIL STABILIZER



BOMAG MPH100 SN:Y85486 Detroit V8 diesel engine, 72in. Stabilizer, 28L-26 rubber.

TRENCH ROLLERS

2012 WACKER RT82-SC2 SN:20120744 diesel engine, 33in. Padsfoot drum, double drum, vibratory drum, drum drive, remote.



BOMAG BMP8500 SN:111654 Kubota diesel engine, padsfoot drum, double drum, vibratory drum, drum drive.

4 RUBBER TRACKED SKID STEERS

2016 CAT 289D SN:TAW05439 Cat diesel engine, rollcage, auxiliary hydraulics, mechanical quick coupler, rubber tracks, GP bucket.

2013 JOHN DEERE 333E John Deere diesel engine, rollcage, auxiliary hydraulics, mechanical quick coupler, rubber tracks, GP bucket.



JOHN DEERE 333G SN:301551 John Deere diesel engine, rollcage, auxiliary hydraulics, hydraulic quick coupler, 17.6in. Rubber tracks, 84in. GP bucket.



JOHN DEERE 329E SN:293576 John Deere diesel engine, EROPS, air, auxiliary hydraulics, hydraulic quick coupler, 18in. Rubber tracks, 84in. GP bucket, 2,433 hours.

SKID STEER

JOHN DEERE 320 John Deere diesel engine, rollcage, auxiliary hydraulics, mechanical quick coupler, GP bucket.

3 SKID STEER ATTACHMENTS



HD3A NUTCRACKER
(2) NEW JBX 4000 48IN. FORKS

4 TRENCHERS

PARSONS SN:155L10119-C Detroit diesel engine, Cab, side discharge conveyor, 12in. Pads, 24in. Digging bucket.
CLEVELAND J57 Deutz diesel engine, OROPS, side dump, 24in. Digging bucket

BARBER GREENE diesel engine, side discharge conveyor, 18in. Pad, 23in. Digging bucket.



BOBCAT T305 SN:508011125 Kubota diesel engine, OROPS, 69in. 6-way blade, 80in. Trencher, 27-10.5 rubber.

3 TELESCOPIC FORKLIFTS

2012 GENIE GTH-1056 SN:GTH1012-16273 4x4, diesel engine, OROPS, 10,000lb lift capacity, 56ft. Reach height, front stabilizers, 818 hours.

2012 SKYTRAK 10054 SN:160046327 4x4, Cummins diesel engine, OROPS, 10,000lb lift capacity, 54ft. Reach height, front stabilizers, 60in. Forks, 72in. Frame, 400x75x28 foam filled rubber.

CAT TH514 SN:0468 4x4, Cat diesel engine, OROPS, 11,000lb lift capacity, 45ft. reach height, front stabilizers.

FORKLIFT

TOYOTA Parts Only.

BOOM LIFT

2012 GENIE Z-30/20N RJ SN:Z30N12-13304 electric powered, 30ft. Platform height, articulating boom, 500lb lift capacity, 187 hours.

SCISSOR LIFT

2015 SKYJACK SJIII3226 SN:27022632 electric powered, 26ft. Platform height, slide out deck, 500lb lift capacity.

WELDER

2014 LINCOLN VANTAGE 500 SN:U1131109741 500AMPS, trailer mounted. Bad Engine.

LIGHT PLANT

2012 TEREX AL4000 SN:AL4121598 diesel engine, 4-1,000 watt lightbulbs, 6KW, trailer mounted.

6 AGRICULTURAL TRACTORS



CAT 85E CHALLENGER SN:6J500310 Cat diesel engine, EROPS, 30in. Pads.



CAT 65C CHALLENGER SN:2ZJ00301 Cat diesel engine, EROPS, 30in. Pads.

CASE 4690 SN:8856767 4x4, diesel engine, OROPS, 3pt hitch, PTO, 18.4-34 rubber. Parts Only.



CASE 4490 SN:8863047 4x4, Case diesel engine, Cab, 3pt hitch, PTO, 23.1-34 tires.

CASE/ INTERNATIONAL MAGNUM 305

SN:Z6RZ03033 MFD, diesel engine, EROPS, 3pt hitch, PTO.

KUBOTA M7-152 MFD, Kubota diesel engine, EROPS, 3pt hitch, PTO.

3 TRACTOR ATTACHMENTS

2012 MID WESTERN M520 SIDE BOOM



ROME TRCW-12 SN:6TRCW-140 12ft. Disc, 30in. Plows, 385/65R22.5 tires.

8FT. OFFSITE DISC

SWEeper



WALDON SWEEPMASTER SN:24762-002 Cummins diesel engine, OROPS, 8ft. Broom, 215/70R15 rubber.

3 WATER TRUCKS



1998 FORD L8000 VN:1FTYR82EXSVA16082 diesel engine, power steering, 2000 gallon water tank, dual wheel single axle.



1990 FORD L8000 VN:1FTYR82E5RVA37786 diesel engine, power steering, 2000 gallon water tank, dual wheel single axle.



MACK VN:VG6M111BXEB019506 Detroit diesel engine, 10 speed transmission, power steering, 1,500 gallon water tank, 11R22.5 tires, 232,088 miles.

DISTRIBUTOR TRUCKS



MACK Mack diesel engine, power steering, Etnyre tank, 29.5/75R22.5 tires, dual wheel single axle, 127,836 miles.



FORD VN:A61020 gas engine, 5 speed transmission, power steering, Etnyre tank, 11R22.5 tires, dual wheel single axle, 1,914 miles.

DUMP TRUCK



MACK CH613 VN:122731 Mack E7 diesel engine, 350hp, 10 speed transmission, power steering, dump body, tarp, 11R22.5 tires, tandem axle.

TRUCK TRACTORS



PETERBILT diesel engine, power steering, wet kit, tandem axle.



INTERNATIONAL 4300 VN:1HTD21370CGB10204 Cummins diesel engine, Eaton 8 speed transmission, power steering, Vacuum pump, 10.00R22 tires, tandem axle.

4 PICKUP TRUCKS



CHEVY 2500HD LT VN:1GCHC29G12E147469 Vortec 8100 gas engine, automatic transmission, 245/75R16 tires. Parts Only.



CHEVY 1500 VN:353742 Vortec gas engine, automatic transmission, Z71 package, 265/70R16 tires. Parts Only.



DODGE 1500 VN:142405 Hemi 5.7 gas engine. Missing Parts.



FORD F250 VN:D02615 Parts.

VAN



2006 FORD VN:HB41686 Parts.

DETACHABLE GOOSENECK TRAILER

HEAVY HAUL DROP DECK SN:8407 50 ton capacity, triaxle.

EQUIPMENT TRAILER

EAGER BEAVER 30ft. Deck, 8ft. Neck, 75 x 17.5 tires, triaxle.

TAGALONG TRAILER



KAUFMAN VN:B000371 22ft. Deck, tandem axle.

DUMP TRAILER



1998 HILBILT SN:1015156 24ft. Dump body, tarp, 11R24.5 tires, tandem axle.

FLOW BOY TRAILERS



1994 FLOW BOY SN:RN102163 live bottom body, 11R24.5 tires, tandem axle.



1992 FLOW BOY SN:NN101886 live bottom body, 11R24.5 tires, tandem axle.

VACUUM TRAILER



VACMASTER SPV800 Kubota diesel engine, 9.50R16.5 tires, trailer mounted.

TRAILER JEEP

CUSTOM BUILT VN:N/A tandem axle.

SUPPORT EQUIPMENT

2010 CLEAN EMIS PURIFIER

2010 CATALYTIC PURIFIER SN:64855

ONSITE/VIRTUAL LIVE AUCTION

Please feel free to preview any of our Virtual Live or Timed Auction sale sites 5 days before auction day!

DELAWARE, OHIO - FRIDAY, JANUARY 22ND AT 9:30 AM

ADDRESS: 935 U.S. 23 N., Delaware OH 43015 (Delaware County Fairgrounds). **NOTE:** This sale will consist of Equipment that was recently returned from completed jobs of 2020. **SPECIAL NOTE:** This part of the auction will be a Live, In-Person event. Masks required. All people attending must follow CDC guidelines for social distancing and hand-washing. Thank you in advance for adhering to these requirements, we appreciate your cooperation! **SALE SITE PHONE:** (863) 602-8365 Mitch. **OHIO AUCTION LICENSE:** 63199360809. **OHIO AUCTIONEER LICENSE:** 62199360989 Jack H. Lyon. **TERMS & CONDITIONS:** "Cash or Company Check" accompanied by current "Bank Letter of Guarantee", made payable to Alex Lyon & Son. Everything Sells "AS IS, "WHERE IS." *The following charges will apply on all purchases:* (1.) For each unit \$35,001.00 and above, a 5.99% administration fee will be assessed when paying with cash or good check. (The standard fee of 8.99% will be assessed when paying with credit card); and (2.) For each unit \$1,001- \$35,000, a 10% administration fee will be assessed when paying with cash or good check, and a 13% fee will be assessed when paying with credit card. (3.) For each unit \$0- \$1,000, a 12.5% administration fee will be assessed when paying with cash or good check, and a 15.5% fee will be assessed when paying with credit card. ****ONLINE BIDDING: An additional fee of 2.5%, cap of \$700 for each piece.****



FOR BID ONLINE TECHNICAL ASSISTANCE CALL
Proxibid: (855) 636-6461
Nextlot: (919) 361-1111

14 CRAWLER TRACTORS



2018 CAT D8T SN:FMC01335 Cat diesel engine, EROPS, air, heat, Angle blade w/ hydraulic tilt, 24in. Pads, winch, 900 hours.



2018 CAT D8T SN:FMC01337 Cat diesel engine, EROPS, air, heat, Angle blade w/ hydraulic tilt, 24in. Pads, winch, 700 hours.



2013 CAT D7E Cat diesel engine, EROPS, air, heat, sweeps, rear screen, 24in pads, winch, Angle blade with hydraulic tilt.

2016 CAT D6TXL SN:GMK01635 Cat diesel engine, EROPS, air, sweeps, High Speed Oil Change, SU blade w/ tilt, Multi-shank ripper, ARO Accugrade ready, Product Link, Heavy Duty Undercarriage.

CAT D6K1GP SN:DHA00527 Cat diesel engine, EROPS, 6 way blade, 30in. Pads.





2016 CAT D5K2LGP SN:AKY200811 Cat diesel engine, EROPS, air, rear screen, 6 way blade, wide pads, wired for grade control.



CAT D4C SERIES III SN:7SL00499 Cat diesel engine, EROPS, 6 way blade.



2018 CAT D3K2XL SN:KF202471 Cat diesel engine, EROPS, 6 way blade, 16in. pads, 504 hours.



2017 JOHN DEERE 850KLT SN:THF318722 John Deere diesel engine, EROPS, air, heat, 159in. 6 way blade, 22in. Pads, Allied H6HH winch w/ (4) roller fairlead, long track frame, 2,058 hours. Hydraulic & Powertrain Warranty, 11-29-21 or 4,000 hours.

2018 JOHN DEERE 750KLT SN:VHF318853 John Deere diesel engine, EROPS, air, heat, 132in. 6 way blade, 24in. Pads, long track frame, 887 hours. Hydraulic & Powertrain Warranty, 8-29-23 or 5,000 hours.

2011 JOHN DEERE 700JLGP John Deere diesel engine, EROPS, air, heat, 6 way blade, 28in. Pads, like new undercarriage.



2018 JOHN DEERE 550KXLT SN:335355 John Deere diesel engine, EROPS, air, 105in. 6 way blade, 18in. Pads, long track frame, 695 hours.

2009 KOMATSU D51EX-22 Komatsu diesel engine, EROPS, air, heat, 10ft. 6in. 6 way blade, 22in. Pads, good undercarriage.

CASE 650K SN:CAL012260 diesel engine, EROPS, radio, joystick steer, 6 way. Blade.

3 ARTICULATED HAUL TRUCKS



2014 JOHN DEERE 410E SN:664453 6x6, John Deere diesel engine, Cab, air, rear camera, radio, 41 ton capacity, tailgate, 29.5R25 rubber.



2009 TEREX TA40 SN:A8651097 6x6, diesel engine, Cab, air, heat, 40 ton capacity, 29.5R25 rubber.



TEREX TA40 SN:A8651387 6x6, diesel engine, Cab, air, heat, 40 ton capacity, 29.5R25 rubber.

19 HYDRAULIC EXCAVATORS



2016 CAT 335FL SN:KNE004949 Cat diesel engine, Cab, air, heat, pattern changer, reach boom, 10ft. 6in. stick, tool control hydraulics, 33in. Pads, pin grabber coupler, product link, 42in. Digging bucket, long undercarriage.

2019 CAT 320 Cat diesel engine, Cab, air, heat, 360 degree cameras, 2D GPS, combination auxiliary hydraulics, Cat grade control, 28in. pads, New 48in. digging bucket.

2014 CAT 320ELRR SN:TFX01035 Cat diesel engine, Cab, air, rear camera, pattern changer, reach boom, long stick, tool control hydraulics, wide pads, reduced tail swing, Pin Grabber quick coupler, 36in. digging bucket, long undercarriage.



2014 CAT 308E2 CR SB SN:FJX00277 Cat diesel engine, Cab, air, swing boom, pattern control changer, 91in. front blade, 7ft. 3in. stick, auxiliary hydraulics, 18in. TBG pads w/ rubber inserts, zero tail swing, Cat hydraulic quick coupler, extra counterweight, 30in. digging bucket w/ Cat hydraulic thumb, 3,319 hours. Engine installed 1/2020 w/ approx. 2,900 hours.

2016 JOHN DEERE 350G SN:F811206 John Deere 9.0L diesel engine, Cab, air, radio, pilot controls, 32in. Pads, digging bucket w/ mechanical thumb.

2015 JOHN DEERE 300G SN:730174 John Deere diesel engine, Cab, air, reach boom, 32in. Pads, quick coupler, 36in. Digging bucket, long undercarriage.

2012 JOHN DEERE 290G SN:1FF290GXJCE705355 John Deere PVX6.8L diesel engine, 188hp, Cab, air, heat, 32in. Pads, 4/5 Lemac Grapple.



2016 JOHN DEERE 245GLC SN:AFB600948 Isuzu diesel engine, 159hp, Cab, air, heat, 10ft. stick, 32in. TBG pads, JRB quick coupler, 48in. digging bucket, long undercarriage, 2,650 hours.



2016 JOHN DEERE 245GLC SN:CFE600843 Isuzu diesel engine, 159hp, Cab, air, heat, 10ft. stick, 32in. TBG pads, JRB quick coupler, 42in. digging bucket, long undercarriage, 2,836 hours.

2013 JOHN DEERE 160G SN:55135 John Deere diesel engine, Cab, air, heat, long stick, auxiliary hydraulics, 24in. Pads, digging bucket.

2015 HITACHI ZX350LC-5 SN:1FFDDC70LEE930654 Isuzu diesel engine, Cab, air, reach boom, 33in. Pads, 54in. Digging bucket, long undercarriage.

2015 HITACHI ZX350LC-5 SN:1FFDDC70TEE930658 Isuzu diesel engine, Cab, air, reach boom, 33in. Pads, 54in. Digging bucket, long undercarriage.

2015 HITACHI ZX290LC-5 SN:40489 diesel engine, Cab, air, rear camera, combination auxiliary hydraulics, 28in. Pads, hydraulic quick coupler, 64in. Digging bucket w/ hydraulic thumb, long undercarriage.

2017 KOMATSU PC290LC-11 SN:70133 Komatsu diesel engine, Cab, air, rear camera, combination hydraulics, 28in. Pads, hydraulic quick coupler, New 54in. Digging bucket, long undercarriage.

KOMATSU PC220LC SN:A88821 Komatsu diesel engine, 168hp, Cab, air, long stick, 32in. Pads, 54in. digging bucket, long undercarriage.

**AMERICA'S
AUCTION
COMPANY**



2016 KOMATSU PC210LC-11 SN:A12313 Komatsu diesel engine, Cab, air, rearview camera, Komtrax, 42in. Digging bucket, long undercarriage, 3,322 hours.

2016 KOMATSU PC210LC-11 SN:GWA12222 Komatsu diesel engine, Cab, air, auxiliary hydraulics, hydraulic quick coupler, 42in. Digging bucket, long undercarriage.

2015 KOMATSU PC138US SN:40462 Komatsu diesel engine, Cab, air, rear camera, control valve, auxiliary hydraulics, 24in. pads, hydraulic quick coupler, New 36in. Digging bucket w/ hydraulic thumb.

2007 LINKBELT 160X2 SN:2892 Isuzu 4JJ1 diesel engine, Cab, air, heat, control pattern selector, 16ft. 11in. Boom, 10ft. Stick, auxiliary hydraulics w/ line group, 24.5in. TBG pads, 24in. Digging bucket.

HYDRAULIC HAMMERS

NEW TROJAN 50CL fits Cat 305 size machines.

NEW TROJAN 35CL 40mm pin fits to: Cat 303, 303.5, 304, Case, New Holland, Kobelco SK35, Deere/Hitachi 35D/G.

6 EXCAVATOR THUMBS

NEW GENTEC HT2650 HYDRAULIC UNIVERSAL THUMB fits up to 50,000lb machines.

NEW GENTEC MT2650 HD UNIVERSAL THUMB fits up to 50,000lb machines.

NEW GENTEC HT1085 HYDRAULIC THUMB fits 10-20,000lb size machines.

NEW GENTEC HT830 HYDRAULIC THUMB fits 6-10,000lb size machines.

NEW TERAN 26IN. THUMB for CAT 312/315 and 12 - 15 TON EXCAVATORS, 4 Tines.

NEW TERAN 8IN. THUMB for CAT 303 and 2 - 3.5 TON MINI EXCAVATORS.

9 EXCAVATOR RIPPERS

NEW TERAN RIPPER for CAT 336D and 336E, 336F, 340D2, 340F.

NEW TERAN RIPPER for CAT 325D and 324D, 324E, 326D2, 326F, 328D, 329D, 329D2, 329E, 329F, 330D2, 330F, 335F.

NEW TERAN RIPPER for CAT 312 and 311D, 311F, 312D, 312D2, 312E, 312F, 313D2, 313F, 314D, 314E, 314F, 315F.

NEW TERAN RIPPER for CAT 307, 50mm Pin.

NEW TERAN RIPPER for CAT 305.

NEW TERAN RIPPER for CAT 304.

NEW TERAN RIPPER for CAT 303.

NEW TERAN RIPPER for CAT 302.

NEW TERAN RIPPER for CAT 301.

16 EXCAVATOR BUCKETS

UNUSED TERAN 36IN. HD DIGGING BUCKET for CAT 325D and 324D, 324E, 326D2, 326F, 328D, 329D, 329D2, 329E, 329F, 330D2, 330F, 335F with Side Cutters, Side Protectors, Heel Shrouds, Lip Protectors, Reinforcement Plates and 5RC Tips - "CB" LINKAGE.

NEW TERAN 72IN. CLEAN UP BUCKET for CAT 325D and 324D, 324E, 326D2, 326F, 328D, 329D, 329D2, 329E, 329F, 330D2, 330F, 335F.



NEW TERAN 56IN. HD DIGGING BUCKET for CAT 336D and 336D2, 336E, 336F, 340D2, 340F with Side Cutters, Side Protectors, Heel Shrouds, Lip Protectors, Reinforcement Plates and 6RC Tips.



NEW TERAN 48IN. HD DIGGING BUCKET W/ SIDE CUTTERS for CAT 320 and 319D, 320D, 320E, 321D, 323E, 323F, 325F with Side Cutters, Side Protectors, Heel Shrouds, Lip Protectors, Reinforcement Plates and 6HD Tips.

NEW TERAN 48IN. HD DIGGING BUCKET W/ SIDE CUTTERS for CAT 325 with Side Cutters, Side Protectors, Heel Shrouds, Lip Protectors, Reinforcement Plates and 6HD Tips.



NEW TERAN 48IN. DIGGING BUCKET W/ SIDE CUTTERS for CAT 312 and 311D, 311F, 312D, 312D2, 312E, 312F, 313D2, 313F, 314D, 314E, 314F, 315F with Reinforcement Plates and Side Cutters and 6HD Tips.

NEW TERAN 48IN. DIGGING BUCKET for KOMATSU PC120 60mm Pin with Reinforcement Plates and 6HD Tips.

NEW TERAN 42IN. CLEAN UP BUCKET for CAT 303, PIN40X260MM.

NEW TERAN 42IN. DIGGING BUCKET W/ SIDE CUTTERS for CAT 315 and 315D, 316E, 316F, 318D2, 318E, 318F with Side Cutters, Reinforcement Plates and 5HD Tips.

NEW TERAN 42IN. HD DIGGING BUCKET W/ SIDE CUTTERS for CAT 325D and 324D, 324E, 326D2, 326F, 328D, 329D, 329D2, 329E, 329F, 330D2, 330F, 335F with Side Cutters, Side Protectors, Heel Shrouds, Lip Protectors, Reinforcement Plates and 5RC Tips.



NEW TERAN 36IN. CLEAN UP BUCKET for CAT 301, 30MM PINS.



NEW TERAN 36IN. HD DIGGING BUCKET W/ SIDE CUTTERS for CAT 320 and 319D, 320D, 320E, 321D, 323E, 323F, 325F with Side Cutters, Side Protectors, Heel Shrouds, Lip Protectors, Reinforcement Plates and 5HD Tips.

NEW TERAN 36IN. DIGGING BUCKET W/ SIDE CUTTERS for CAT 312 and 311D, 311F, 312D, 312D2, 312E, 312F, 313D2, 313F, 314D, 314E, 314F, 315F with Reinforcement Plates and Side Cutters and 5HD Tip.

NEW TERAN 30IN. HD DIGGING BUCKET W/ SIDE CUTTERS for CAT 336D and 336D2, 336E, 336F, 340D2, 340F with Side Cutters, Side Protectors, Heel Shrouds, Lip Protectors, Reinforcement Plates and 3RC Tips.

NEW TERAN 30IN. HD DIGGING BUCKET W/ SIDE CUTTERS for CAT 320 and 319D, 320D, 320E, 321D, 323E, 323F, 325F with Side Cutters, Side Protectors, Heel Shrouds, Lip Protectors, Reinforcement Plates and 4HD Tips.

NEW TERAN 12IN. DIGGING BUCKET for CAT 302 with Side Cutters, Reinforcement Plates and 3HD Tips, 35MM PINS.

4 EXCAVATOR ATTACHMENTS

NEW TERAN QUICK COUPLER for CAT 311/312/314 65MM PINS ("312A" LINKAGE).

NEW TERAN BUCKET PIN, FRONT & REAR for CAT 320 - ("B" LINKAGE) 80X545MM.

NEW TERAN BUCKET PIN for CAT 330 - 80MM ("D" LINKAGE) (80MM X 630MM).

NEW TERAN BUCKET PIN for CAT 330 - 90MM ("D" LINKAGE) (90MM X 650MM).

10 RUBBER TIRED LOADERS



2017 CAT 980M Cat diesel, EROPS, air, heat, ride control, GP bucket, 29.5R25 tires.



2015 CAT 980M SN:KRS00575 Cat diesel engine, EROPS, air, heat, radio, aggregate package, ride control, autolube, high speed oil change, 7.75 yard GP bucket, 29.5R25 rubber.



2014 CAT 966K SN:LTFS00922 Cat diesel engine, EROPS, air, heat, rear camera, joystick steering, Cat Fusion hydraulic coupler, 5.5 yard GP bucket, 26.5R25 rubber.



(2) 2019 CAT 938M Cat C7.1 ACERT diesel engine, 188hp, EROPS, air, heat, deluxe cab, ride control, hydraulic coupler, Cat 3.8yd GP bucket, 20.5R25 rubber, low hours.



DEMO CAT 908M SN:K5800458 Cat C3.3B diesel engine, EROPS, air, heat, quick coupler, GP bucket, 405/70R20 rubber, 400 hours. Forks Sell Separately.

UNUSED CAT 906M Cat diesel engine, EROPS, air, quick coupler, GP bucket. Forks Sell Separately.

2015 JOHN DEERE 624K HL SN:665025 John Deere diesel engine, EROPS, air, auto lube, high lift arrangement, hydraulic quick coupler, GP bucket, 20.5R25 rubber.



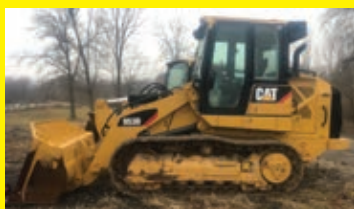
2019 JOHN DEERE 544L John Deere diesel engine, EROPS, air, heat, ride control, front fenders, 3 yard GP bucket, 20.5R25 L3 rubber, 219 hours.



2019 JOHN DEERE 544L John Deere diesel engine, EROPS, air, heat, ride control, front fenders, 3 yard GP bucket, 20.5R25 L3 rubber, 239 hours.

3 CRAWLER LOADERS

CAT 963C SN:02DS02330 Cat diesel engine, EROPS, air, 3 yard GP bucket.



2017 CAT 953D SN:LBF02229 Cat diesel engine, EROPS, air, heat, 20in. Pads, GP bucket, 2,100 hours.



2017 CAT 953D SN:LBF02160 Cat diesel engine, EROPS, air, heat, 20in. Pads, GP bucket, 2,100 hours.

TRACTOR LOADER BACKHOE



2014 CAT 420F SN:SKR02406 4x4, Cat Diesel engine, EROPS, air, pilot controls, standard stick, rear hydraulics, GP front bucket, 24in. Rear digging, 2,327 hours.

3 TRACTOR LOADER BACKHOE ATTACHMENTS

NEW TERAN 48IN. MUD BUCKET W/ BOCE for CAT 416/428.



NEW TERAN 24IN. DIGGING BUCKET for CAT 416/428 with Reinforcement Plates and 5HD Tips.

NEW TERAN 16IN. DIGGING BUCKET for CAT 416/428 with Reinforcement Plates and 4HD Tips.

VIBRATORY ROLLER

BOMAG BW172D-2 SN:109520120255R powered Deutz diesel engine, EROPS, 66in. Smooth drum, vibratory drum, drum drive, 14.6-24 rubber, 2,079 hours. Does Not Run.

TRENCH ROLLER



JCB VM1500 SN:N/A diesel engine, 35in. Padsfoot drum, vibratory drum, double drum, drum drive, 147 hours.

6 RUBBER TRACKED SKID STEERS



2018 CAT 289DXPS SN:TAW08733 Cat Diesel engine, EROPS, air, 2-speed, high flow hydraulics, hydraulic coupler, GP bucket, 2,347 hours.

2016 CAT 279D SN:GTL03443 Cat diesel engine, EROPS, air, heat, auxiliary hydraulics, electric quick coupler, 18in. Rubber tracks, 80in. GP bucket, 1,266 hours.

2016 CAT 279D SN:GTL02373 Cat diesel engine, EROPS, air, heat, auxiliary hydraulics, electric quick coupler, 18in. Rubber tracks, 85in. GP bucket.

2019 CAT 259D3 Cat diesel engine, rolldage, auxiliary hydraulics, mechanical quick coupler, 12in. Rubber tracks, 72in. GP bucket, 624 hours.

2018 CAT 259D SN:FTL16719 Cat diesel engine, EROPS, air, heat, auxiliary hydraulics, mechanical quick coupler, 12in. Rubber tracks, 60in. GP bucket, 1,020 hours.

2011 CASE TV380 diesel engine, EROPS, air, heat, 2-speed, pilot controls, auxiliary hydraulics, hydraulic quick coupler, 16in. Rubber tracks, GP bucket.

5 SKID STEERS

2019 CAT 262D2 Cat diesel engine, EROPS, air, auxiliary hydraulics, mechanical quick coupler, Grapple bucket, 2,200 hours.

2018 JOHN DEERE 330G John Deere diesel engine, EROPS, air, heat, 2-speed, auxiliary hydraulics, hydraulic quick coupler, self leveling, 78in. GP bucket, 14-17.5 rubber, 300 hours. Extended Warranty.

2014 JOHN DEERE 326E SN:AAEJ256639 John Deere diesel engine, EROPS, air, 2-speed, high flow auxiliary hydraulics, hydraulic quick coupler, GP bucket.

2017 JOHN DEERE 320E SN:J316302 John Deere diesel engine, rolldage, auxiliary hydraulics, mechanical quick coupler, Clamp bucket, Flexport tires.

2017 JOHN DEERE 320E SN:J31273 John Deere diesel engine, rolldage, auxiliary hydraulics, mechanical quick coupler, Clamp bucket, Flexport tires.

30 SKID STEER ATTACHMENTS

UNUSED STOUT XHD84-6 BRUSH GRAPPLE

UNUSED STOUT HD72-8 BRUSH GRAPPLE

(3) NEW 90IN. BUCKET

(2) NEW 84IN. FORK EXTENSION

(3) NEW 3/4 CUBIC YARD CONCRETE PLACEMENT BUCKET

(17) NEW ATTACH FRAME

(2) NEW JBX 4000 48IN. FORKS TREE SPADE

TELESCOPIC FORKLIFTS



UNUSED SKYTRAK 10054 4x4, diesel engine, EROPS, air, heat, 10,000lb lift capacity, 54ft. Reach height, front stabilizers, 72in. Carriage. Factory Warranty.

2015 CAT TH414C SN:OKRF00333 4x4, Cat diesel engine, EROPS, heat, 11,000lb lift capacity, 44ft. Reach height, front stabilizers.

TELESCOPIC FORKLIFT ATTACHMENT

PINTLE HOOK

7 BOOM LIFTS

GENIE S85 SN:6629 4x4, Deutz diesel engine, 85ft. Platform height, straight boom, 8ft. Platform, 500lb lift capacity, 385/65-22.5 NHS tires.

GENIE S85 SN:6303 4x4, Deutz diesel engine, 85ft. Platform height, straight boom, 500lb lift capacity. Genie Certified Reconditioned Equipment Scope of Work (Includes but not limited to): Machine stripped to base assemblies Critical components, such as platforms and jibs, are replaced with new platform and base controls are rebuilt: new decals, joysticks, toggle switches and software Boom wear pads are replaced Boom extend/retract cables are replaced Boom electrical cables are replaced. All limit switches, tilt sensor, angle sensors, alarms and lights are replaced. Fuel tank and fuel system are replaced Hydraulic tank are flushed and cleaned, as well as new hydraulic oil and filters are installed All hydraulic hoses are replaced Steering bearings and king-pins are replaced Engine is replaced (reman). Factory options fitted generators and welder-ready packages- (not in scope of work). Additional only if machine had the option when it left the factory. No add-on Machine fully painted, returned to original factory colors. Full decal replacement. All hydraulic and electric setting are brought back to factory specification. Full function testing completed, including weight testing. All outstanding safety bulletins are completed New Foam Filled Tires.

GENIE S80 SN:S8007-5943 4x4, Deutz diesel engine, 60ft. Platform height, straight boom, 500lb lift capacity.

GENIE Z80/60 SN:2294 4x4, Deutz diesel engine, 80ft. Platform height, articulating boom, 500lb lift capacity. Genie Certified Reconditioned Equipment Scope of Work (Includes but not limited to): Machine stripped to base assemblies Critical components, such as platforms and jibs, are replaced with new platform and base controls are rebuilt: new decals, joysticks, toggle switches and software Boom wear pads

are replaced Boom extend/retract cables are replaced Boom electrical cables are replaced. All limit switches, tilt sensor, angle sensors, alarms and lights are replaced. Fuel tank and fuel system are replaced Hydraulic tank are flushed and cleaned, as well as new hydraulic oil and filters are installed All hydraulic hoses are replaced Steering bearings and king-pins are replaced Engine is replaced (reman). Factory options fitted generators and welder-ready packages- (not in scope of work). Additional only if machine had the option when it left the factory. No add-on Machine fully painted, returned to original factory colors. Full decal replacement. All hydraulic and electric setting are brought back to factory specification. Full function testing completed, including weight testing. All outstanding safety bulletins are completed New Foam Filled Tires.

(2)GENIE Z60/34 4x4, Deutz diesel engine, 60ft. Platform height, articulating boom, 500lb lift capacity. Genie Certified Reconditioned Equipment Scope of Work (Includes but not limited to): Machine stripped to base assemblies Critical components, such as platforms and jibs, are replaced with new platform and base controls are rebuilt: new decals, joysticks, toggle switches and software Boom wear pads are replaced Boom extend/retract cables are replaced Boom electrical cables are replaced. All limit switches, tilt sensor, angle sensors, alarms and lights are replaced. Fuel tank and fuel system are replaced Hydraulic tank are flushed and cleaned, as well as new hydraulic oil and filters are installed All hydraulic hoses are replaced Steering bearings and king-pins are replaced Engine is replaced (reman). Factory options fitted generators and welder-ready packages- (not in scope of work). Additional only if machine had the option when it left the factory. No add-on Machine fully painted, returned to original factory colors. Full decal replacement. All hydraulic and electric setting are brought back to factory specification. Full function testing completed, including weight testing. All outstanding safety bulletins are completed New Foam Filled Tires.



GENIE S60 SN:600613475 4x4, Deutz F4L-1011 diesel engine, 60ft. Platform height, straight boom, cold start package, 500lb lift capacity, foam filled rubber. Reconditioned.

4 GENERATORS

2015 CAT APS60 SN:XRA00210 Cat diesel engine, 60KW, selector switches, sound attenuated, base fuel tank, multi-voltages, trailer mounted.

2012 CAT QX45 SN:GLE01151 Cat diesel engine, 45KW, selector switches, sound attenuated, base fuel tank, multi-voltages, trailer mounted.

2012 CAT QX45 SN:GLE01084 Cat diesel engine, 45KW, selector switches, sound attenuated, base fuel tank, multi-voltages, trailer mounted.

2011 CAT QX30 SN:GBE00890 Cat diesel engine, 30KW, selector switches, sound attenuated, base fuel tank, multi-voltages, trailer mounted.

LIGHT PLANTS

2010 ALLMAND NITE LITE PRO SN:0231PRO11 diesel engine, 4-1,000 watt lightbulbs, 6KW, trailer mounted.

2009 ALLMAND NITE LITE PRO SN:1335PRO09 diesel engine, 4-1,000 watt lightbulbs, 6KW, trailer mounted.

ARROW/MESSAGE BOARD

ARROW MASTER WAAW-15SB-STD SN:3013334 solar powered, trailer mounted.

9 AGRICULTURAL TRACTORS

DEMO NEW HOLLAND T6.180 diesel engine, EROPS, powershift, front suspension, 3pt hitch, PTO, 30 hours.



DEMO NEW HOLLAND TS6.130 SN:NT01602M 4x4, powered diesel engine, EROPS, air, heat, loaded, Loader ready, 3pt hitch, PTO, 419 hours.



2016 NEW HOLLAND TS6.130 SN:NT01517M 4x4, diesel engine, EROPS, air ride seat, buddy seat, power shuttle, dual power, 4-remotes, 3pt hitch, PTO, front seats, 425 hours.

NEW HOLLAND TM190 SN:37430 diesel engine, EROPS, powershift 18, weights, 540/1000 PTO, 480/70/30 front tires, 580/70/42 rear tires.

JOHN DEERE 7720 SN:RW7720D010868 MFWD John Deere diesel engine, Cab, IVT transmission, GPS antenna, front hydraulics, 3pt hitch, PTO.

JOHN DEERE 7700 4x4, John Deere diesel engine, EROPS, 3pt hitch, PTO.

JOHN DEERE 3140 SN:27163L 4x4, John Deere diesel engine, EROPS, 16/8 high low transmission, weights, 2-hydraulics, 540/1000 PTO.



MAHINDRA 1640HST MFWD Diesel engine, 39hp, EROPS, air, front loader w/ GP bucket, 3pt, pto, 28 hours.

CASE/ INTERNATIONAL 5150 4x4, diesel engine, EROPS, 3pt hitch, PTO.

4 VACUUM TRUCKS



2012 PETERBILT 388 VN:1NPWL40X9CD142746 Cummins ISX15 diesel engine, 500hp, 18 speed transmission, power steering, engine brake, Curry 110 barrel vacuum tank, Masport vacuum pump, 20,000lb fronts, 46,000lb rears, air ride suspension, aluminum wheels, 425/65R22.5 front tires, 11R24.5 rear, (2) air lift axles, quad axle.

2012 PETERBILT 388 VN:1NPWL40X7CD142745 Cummins ISX15 diesel engine, 500hp, 18 speed transmission, power steering, engine brake, Curry 110 barrel vacuum tank, Masport vacuum pump, 20,000lb fronts, 46,000lb rears, air ride suspension, aluminum wheels, 425/65R22.5 front tires, 11R24.5 rear, 20,000lb air lift axle, triaxle, 503,000 miles.

2011 PETERBILT 388 VN:1NPWX4EX7BD117467 Cummins ISX15 diesel engine, 485hp, 18 speed transmission, power steering, engine brake, ITI 110 barrel vacuum tank, Masport vacuum pump, 20,000lb fronts, 46,000lb rears, Hendrickson suspension, aluminum wheels, 315/80R22.5 front tires, 11R24.5 rear, (2) air lift axles, quad axle, 496,000 miles.

2010 PETERBILT 388 VN:1NPWL40X7AD113873 Cummins ISX15 diesel engine, 435hp, 18 speed transmission, power steering, engine brake, Curry 110 barrel vacuum tank, Masport vacuum pump, 20,000lb fronts, 46,000lb rears, Hendrickson suspension, aluminum wheels, 425/65R22.5 front tires, 11R24.5 rear, (2) air lift axles, quad axle, 427,000 miles.

ROLLBACK TRUCK



2012 INTERNATIONAL 7600 VN:1HTGSSJR4CJ621891 MaxxForce diesel engine, Eaton Fuller 10 speed transmission, power steering, Jerr-Dan 815 TRBLP body, SN 0220001420, Ramsey winch, air ride suspension, 12R22.5 Front tires, 295/75R22.5 Rear tires, tandem axle, 267,078 miles.

FLATBED TRUCK

2015 FORD F450 VN:1FDTF4HT3FE896458 4x4, diesel engine, automatic transmission, power steering, flatbed body, dual wheel single axle, 249,018 miles. title delay

4 SERVICE TRUCKS



2015 FORD F550XL SN:D18014 Ford 6.7L V8 Diesel engine, automatic transmission, power steering, a/c, Omaha service body, air compressor, Miller Bobcat 225 welder, oil and fuel tanks, hose reels, dual wheel single axle, 149,269 miles.

2013 FORD F550XL VN:B75315 Ford 6.2L V8 gas engine, automatic transmission, power steering, service body, air compressor, dual wheel single axle, 150,698 miles. Engine Issues.



2012 INTERNATIONAL VN:N/A diesel engine, Allison automatic transmission, power steering, IMT service body, IMT 6025 hydraulic crane, hydraulic air compressor, dual wheel single axle, 185,000 miles.

2007 STERLING ACTERRA VN:N/A diesel engine, power steering, Stellar 11ft. Service body, Stella 9620 hydraulic crane, hydraulic air compressor, dual wheel single axle.

8 TRUCK TRACTORS

2016 MACK CXU613 VN:053465 Mack MP8 diesel engine, 445hp, Mack M-drive automatic transmission, power steering, a/c, 60in. Flat top sleeper, air ride suspension, air brakes, 215in. Wheelbase, 2.79 ratio, 22.5 tires, tandem axle.

2016 MACK CXU613 VN:55798 Mack MP8 diesel engine, 445hp, Mack M-drive automatic transmission, power steering, a/c, 60in. Flat top sleeper, air ride suspension, air brakes, 215in. Wheelbase, 2.79 ratio, 22.5 tires, tandem axle.

2016 MACK CXU613 VN:055796 Mack MP8 diesel engine, 445hp, Mack M-drive automatic transmission, power steering, a/c, 60in. Flat top sleeper, air ride suspension, air brakes, 215in. Wheelbase, 2.79 ratio, 22.5 tires, tandem axle.

2016 MACK CXU613 VN:055799 Mack MP8 diesel engine, 445hp, Mack M-drive automatic transmission, power steering, a/c, 60in. Flat top sleeper, air ride suspension, air brakes, 215in. Wheelbase, 2.79 ratio, 22.5 tires, tandem axle.



2017 FREIGHTLINER ARGOSY COE GLIDER

VN:HT8713 Detroit Series 60 diesel engine, 18 speed transmission with 2 speed rear axle, rear view camera, air ride suspension, 20,000lb front axle, 20,000lb air lift axle, 46,000lb rears, 315/80R22.5 tires, 11R24.5 rear, polished aluminum wheels, stainless fenders, triaxle, 69,000 miles.

2014 PETERBILT 579 VN:230895 Paccar diesel engine, 455hp, Eaton automatic transmission, power steering, wet line, locking rears, tandem axle.

2014 PETERBILT 579 VN:230900 Paccar diesel engine, 455hp, Eaton automatic transmission, power steering, wet line, 46,000lb locking rears, tandem axle.

2012 PETERBILT 386 VN:161457 Paccar diesel engine, 10 speed transmission, power steering, wet line, 46,000lb locking rears, tandem axle.

DUMP TRUCK



2009 PETERBILT 365 VN:773807 Cat C13 diesel engine, 8LL transmission, power steering, Jake brake, New 16ft. Rowe dump body, 46,000lb rears, double frame, 4.30 ratio, lockers, front floats, air lift third axle, triaxle, 123,000 miles.

GOLF CART



2016 POLARIS BRUTUS 1000HD
VN:4XAB4PD14G7740958 4x4, diesel engine, EROPS, front loader with bucket, pto, utility dump body.

DETACHABLE GOOSENECK TRAILER



2015 KAUFMAN 55 TON VN:5543 55 ton capacity, 25ft. Well, wet line and pony motor, outriggers, aluminum wheels, 275/70R22.5 tires, air lift axle, triaxle, Flip Axle Sells Separately.

STEP DECK TRAILERS

2007 GREAT DANE VN:701707 48ft. X 102in. Deck, 10ft. Front deck, wood floor, (11) winches, 18in. KP, 17.5 tires, spread tandem axle.

2002 TRANSCRAFT VN:69012 48ft. X 102in. Aluminum deck, aluminum crossmembers, air ride, 22.5 tires, spread tandem axle.

STORAGE BUILDING

NEW GOLDEN MOUNT 30FT. X 65FT. X 15FT. Snow Rating Test Report;SGS fabric Certificate, Dome roof frame, snow rating:180kg.

OFFICE TRAILERS



20FT. OFFICE heat, ac, fully insulated, electric led lights.
20FT. OFFICE W/STORAGE heat, ac, fully insulated, electric led lights.

4 SCRAP RECYCLING EQUIPMENT

NEW 2 CUBIC YARD SELF DUMPING HOPPER
(2) NEW 1.75 CUBIC YARD SELF DUMPING HOPPER
NEW 1.75 YARD HD TRASH HOPPER

11 SNOW EQUIPMENT

NEW 120IN. SNOW PUSHER
(10) NEW 96IN. SNOW PUSHER

SCAFFOLDING

(2) LARGE QTY OF SCAFFOLDING

4 PRESSURE WASHERS

(4) NEW EASY KLEEN MAGNUM GOLD gas engine, 4000PSI, 12Volt, 15hp, Hot Water, totally self contained.

65 NEW SUPPORT EQUIPMENT

NEW SIMPSON POWERSHOT GENERATOR gas engine, 3600 watts, 3.4 gallon capacity, wheel kit.
(3) NEW MUSTANG LF88 PLATE COMPACTOR
(4) NEW MUSTANG MP4800 2IN. SUB PUMP
(2) NEW MUSTANG CV3500 CONCRETE VIBRATOR
(2) NEW HUSKIE B65 ELECTRIC DEMO HAMMER
(2) NEW HUSKIE 11218SDS HAMMER DRILLS
(8) NEW 3 PC. 14IN. PREMIUM DIAMOND BLADES
(8) NEW 25FT., 800AMP EXTRA HD BOOSTER CABLE
(6) NEW 2IN. X 50FT. DISCHARGE WATER HOSE
(4) NEW AUTO DARKENING WELDING HELMET
(3) NEW 1/2IN. DRIVE AIR IMPACT WRENCH KIT
NEW 12V DIESEL FUEL PUMP
(2) NEW 6PK. 14IN. ABRASIVE BLADES
NEW GREASE GUN
(5) NEW 30IN. X 57IN. WELDING TABLE W/SHELF
(2) NEW 29.5IN. X 90IN. HEAVY DUTY WORK BENCH W/ SHELF
NEW WELDING TABLE
(2) NEW 3/8IN. AR500 DUELING TREE SHOOTING TARGET
(4) NEW 3/8IN. AR500 GONG TARGET
(2) NEW 1/2 AR500 STEEL COYOTE SHOOTING TARGET
NEW (3) WELDING SHIELDS
NEW 2IN. X 50FT. DISCHARGE WATER HOSES

6 SUPPORT EQUIPMENT

(2) 12 TON JACK STANDS
2013 WACKER DPU7060F 31IN. COMPACTOR SN:2193399 diesel engine, remote.
MITY MITE PIPE PULLER 516 SN:9712
HONDA EB3000CK1AN GENERATOR SN:1515262
HUSQVARNA PUSH MOWER
AIR COMPRESSOR

LATE ADDITIONS

PLEASE CHECK LYONAUCTION.COM FOR A EXTENSIVE TRUCK AND TRAILER LIQUIDATION!

SKID STEER ATTACHMENTS

NEW GREATBEAR 86IN. HYDRAULIC SNOW PLOW
(2) NEW GREATBEAR 72IN. HYDRAULIC ROCK BUCKET
NEW GREATBEAR 72IN. HYDRAULIC VIBRATORY ROLLER
NEW GREATBEAR ROTARY CULTIVATOR
NEW GREATBEAR 78IN. FORK GRAPPLE

CONTAINERS

NEW 40FT. HIGH CUBE CONTAINER Details: Four Side Open Door, one end door, lock box, side forklift pockets.
NEW 9FT.
NEW 8FT.

STORAGE BUILDINGS

NEW GOLDEN MOUNT 30FT. X 65FT. X 15FT. Snow Rating Test Report;SGS fabric Certificate, Dome roof frame , snow rating:180kg.
(2) NEW GOLDEN MOUNT 40FT. X 40FT. Snow Rating Test Report;SGS fabric Certificate, PE fabric galvanized tube, UV-resistance & fire- retardant.
(2) NEW GOLDEN MOUNT 40FT. X 20FT. Snow Rating Test Report;SGS fabric Certificate, PE fabric galvanized tube, UV-resistance & fire- retardant.
(2) NEW GOLDEN MOUNT 20FT. X 30FT. X 12FT. Snow Rating Test Report;SGS fabric Certificate, Peak roof frame, snow rating:200kg.
NEW GOLDEN MOUNT 20FT. X 20FT. Snow Rating Test Report;SGS fabric Certificate, PE fabric galvanized tube, UV-resistance & fire- retardant.

PORTABLE BATHROOM STATIONS

NEW BASTONE 110V PORTABLE TOILETS W/ SHOWER
NEW BASTONE 110V PORTABLE TOILET W/ DOUBLE STALL

NEW SUPPORT EQUIPMENT

(6) NEW GREATBEAR 20FT. BI-PARTING WROUGHT IRON GATE With artwork "Deer" in the Middle of Gate Frame.
(5) NEW GREATBEAR 14FT. BI-PARTING WROUGHT IRON GATE With artwork "Deer" in the Middle of Gate Frame.
(2) NEW STEELMAN 10FT. WORKBENCH W/ 15-DRAWERS & 2 CABINETS
(2) NEW STEELMAN 7FT. WORKBENCH W/ 20-DRAWERS
(2) NEW STEELMAN 7FT. WORKBENCH W/ 10-DRAWERS & 2 CABINETS
NEW GREATBEAR QTY OF 22PC 2T-5T WEBBING SLING
(2) NEW 5/16" 7FT. G80 DOUBLE LEGS LIFTING CHAIN SLINGS
NEW GREATBEAR ELECTRIC WINCH
NEW GREATBEAR (5) 5400LBS RATCHET BINDER & (10) 20FT. 5/16" CHAIN
NEW GREATBEAR (5) 9200LBS RATCHET BINDER & (10) 20FT. 3/8" CHAIN

28TH ANNUAL FLORIDA AUCTION

THE GREATEST SALE OF THE YEAR! • 9 DAYS OF SELLING!!

*Construction Equipment, Aerials, Forklifts, Cranes, Dump Trucks,
Truck Tractors, Trailers, Support & Attachments*

SATURDAY, JANUARY 30TH – SUNDAY, FEBRUARY 7TH @ 9:00 AM

KISSIMMEE, FLORIDA (Winter Garden)

**ONSITE
AUCTION**



ADDRESS: 12601 Avalon Road,
Winter Garden Florida 34787

**ONSITE
AUCTION**



JACK'S NOTE: 28 Glorious Years
Conducting This High Quality Sale.

THE 28TH ANNUAL 9-DAY FLORIDA AUCTION: Where the Best
Equipment is the Norm, not the Exception. The Greatest Auction
On Planet Earth. Primarily selling 2015-2020 Construction,
Cat, Komatsu, JD, Case, LinkBelt, Volvo, Atlas Copco, Aerial
Equipment, Trucks and Trailers.



SPECIAL TIMED EVENT FEBRUARY 3: 2015
BOMBARDIER LEARJET 70: All potential buyers can inspect the
airplane by appointment. Please contact Scott Moyer (315-439-
7740). Plane will be hangaring in Kissimmee, Florida. Please visit
www.lyonauction.com for more details.



HIGHLIGHTS INCLUDE: **TRENCHER:** Trencher T1060, **SOIL COMPACTOR:** 2017 Cat
815K, **14 ARTICULATED HAUL TRUCKS:** (2)2018 Cat 745C, (2)2011 Cat 725, 2015-2014
Volvo A30G, (2)2014 Volvo A30F, 2019-2016 Volvo A25G, (2)2018-2017-2016 Bell B30E, **4**
LONG REACH EXCAVATORS: 2017-2016 Cat 326FL(60'), 2018 Linkbelt 250X4, 2018 Linkbelt
210X4(50'), **156 HYDRAULIC EXCAVATORS:** Cat 375L, 2019 Cat 352FVG, Cat 350LC, 2015-
2014 Cat 349FL, 2012 Cat 349EL, (2)2020 Cat 336, 2017-2016 Cat 336FL, (4)2014-(2)2013
Cat 336EL, 2020 Cat 335FLCR, 2020-(2)2016 Cat 330F, (2)2013 Cat 329EL, 2017-2016
Cat 326FL, (2)2020-2019-2017-2016 Cat 325FLCR, 2016 Cat 325, Cat 325B, (10)2020-
2019 Cat 320, 2020 Cat 320NXT, (5)2018 Cat 320FL, 2013 Cat 320ELRR, Cat 316EL,
(3)2020 Cat 315FLCR, 2020-(2)2018-(4)2017 Cat 313FL, (2)New Cat 313, 2019-(2)2018-
(2)2017-2016 Cat 313FLGC, 2015-(2)2014 Cat 312EL, (2)Cat 312E, Cat 312, (3)2018-
(2)2017-(2)2016-2015 Cat 308E2CR, (2)Cat 308C, 2015 Cat 305.3ECR, Cat 235C, 2018
Volvo EC480EL, 2018 Volvo ECR355EL, 2017 Volvo EC350EL, (2)2019 Volvo EC300EL,
2018 Volvo EC250EL, 2018 Volvo ECR235EL, 2018 Volvo EC220EL, 2011 Kobelco
SK350LC-9, 2019 Kobelco SK85C, 2018 Kobelco SK75SR, (2)2019 Kobelco SK55R, (2)
Komatsu PC360LC-10, Komatsu PC300LC, 2018 Komatsu PC228USLC-11, (5)Komatsu
PC138US-10, Hitachi ZX470LC, 2014 Hitachi ZX225USLC-5, 2019 Hitachi ZX210LC-6,
2015 Case CX470, 2018 Case CX245DSR, 2020 Case CX90D, (2)New Doosan DX225LC,
Unused Doosan DX140LCR-5, 2020 Doosan DX65R-3, (4)2020 Doosan DX62R-3, JD
350GLC, JD 135CRTS, (2)2019-(4)2018 Linkbelt 201X4, (2)2018-2017 Sany SY135C,
2020-(3)2018-2017 Bobcat E85, Bobcat 331E, Unused Takeuchi TB2150R, 2017 Takeuchi
TB260, Takeuchi TB016, Takeuchi TB014, Takeuchi TB007, NH EC60, NH E33C, (3)2019
NH E37C, Kubota KX121, (2)Kubota KX91, 2017-2014 Kubota KX080-4, (2)2017 Yanmar
V1080, **RUBBER TIRED EXCAVATOR:** 2014 Volvo EW160D, **2 MATERIAL HANDLERS:** 2009
Fuchs MHL350D, 2008 Fuchs MHL320D, **11 MOTOR GRADERS:** 2010 Cat 16M, 2016 Cat
160M, 2018 Cat 140KVHP, 2013-(2)2011 Cat 140M2, 2015 Cat 12M3, 2012 Cat 12M2,
2015 Komatsu GD655-5, (2)2009 Volvo G930, **MOTOR SCRAPER:** Cat 621E, **3 PULL PANS:**
(3)Pull Pans, **62 RUBBER TIRED LOADERS:** Cat 988F, Demo Cat 980M, 2013 Cat 980K,
Cat 980G, 2017 Cat 972M, Cat 972G, Demo Cat 966M, Cat 966G-2, (2)New & 2018 Cat
962M, (2)New-2017-(2)2016 Cat 950M, 2014-2012 Cat 950K, 2018 Cat 950GC, Cat 950F,
Cat 950E, Cat 950K, (2)2018-(3)2017-(4)2016-2015 Cat 938M, Cat 938G, (3)Cat 936F,



CONTINUED ON NEXT PAGE

CONTINUED FROM PREVIOUS PAGE


America's Auction Company. Big enough for the industry leaders, yet personal enough for America's farmer.

Cat 930, Cat 920, 2018-(2)2016 Cat 926M, Cat 926E, 2020 Cat 910M, Demo Cat 908M, Cat IT18, (2)Unused Liebert L506C, Komatsu WA500, Komatsu WA420-3, 2013 Komatsu WA320-6, 2007 Doosan Mega 250V, JD 724J, 2014 JD 644KH2, 2014 JD 624K, 2019 JD 544L, Volvo L120E, 2018 Volvo L110H, 2013 Volvo L110G, 2014 Volvo L90G, Volvo L90E, 2019 Volvo L70H, IR WL350, **46 CRAWLER TRACTORS:** (2)Cat D10R, Unused-(3)2018 Cat D8T, 2020 Cat D7E, 2019 Cat D6TLGP, 2014 Cat D6TLGP, (3)2018 Cat D6NLGP, 2018 Cat D6N, (3)2016 Cat D6NLGP(ripper), 2008 Cat D6NLGP(winch), 2015-2014 Cat D6K2LGP, (2)2015 D6K2LGP, (2)2017-(2)2016-(2)2015-(2)2014-2013 Cat D5K2LGP, (2)Cat D5K2LGP, (2)Cat D4K2LGP, (2)2019 Cat D3K2LGP, 2018 Cat D3K2XL, 2019 JD 650KXLT, 2018 JD 550K2LGP, (3)2019 JD 450KLT, 2018 JD 450K2LGP(cab), Case 450C, **15 CRAWLER DUMPS:** 2016 Terramac RT14, (2)2018 Terramac RT6, 2014 Morooka MST4000VD, (3)2016-2014 Morooka MST2200VD, (2)Morooka MST1500VD, (5)2014 Morooka MST800VD, **2 CRAWLER CRANES:** Lima 50-ton, P&H 35-ton, **ROUGH TERRAIN CRANE:** Terex LRT-110, **TRUCK CRANE:** Grove TM-875, **PILE DRIVER:** Fundex F12, **15 TRACTOR LOADER BACKHOES:** 2018 Terex TLB840R(4x4), 2012 Cat 450E(4x4), Cat 426, 2013 Cat 420F, Cat 420D, Cat 416F, (7)2013 JD 310K, 2012 Case 580N, 2009 Case 580SM, **SLIP PAVES:** Gomaco GT3600, **3 ASPHALT PAVERS:** Leeboy 8500, Leeboy 1000, Leeboy 100, **SOIL STABILIZER:** Bomag MPH454R, **33 VIBRATORY ROLLERS:** (2)2017 Cat CS74B, (8)2011 Cat CS74, 2014 Cat CS56B, Cat CS563E, 2015-(2)2013 Cat CS44, (3)2017 Dynapac CA2500D, 2017-2014 Volvo SD115B, (2)Unused Bomag BW213DH-5, 2014 Bomag BW211D-50, (2)Unused Bomag BW177D-5, 2016 Bomag BW145D-5, 2013-(3)2012 Hamm 3410, 2014-2011 Hamm 3307, Demo Hamm H11i, **11 ASPHALT ROLLERS:** (7)Unused Bomag BW120A11-5, Sakai SW850, Hycap 340C, Dynapac CC142, Ingram, **3 TRENCH ROLLERS:** 2009 Multiquip P33HMR, Wacker RT820, Benford BTR851, **12 RUBBER TRACKED SKID STEERS:** Takeuchi TL10R, 2015 Takeuchi TL8, Cat 299D, 2016 Cat 289D, Cat 289C2, 2019 Cat 259D3, (3)2019 Cat 259D, Cat 259B3, 2014 Cat 257B, NH C232, **9 SKID STEERS:** Unused JD 318D, (3)Cat 262B, 2018 Cat 232D, (3)2016 Cat 226D3, Mustang, **19 TELESCOPIC FORKLIFTS:** (2)2016 Cat TL1255D, 2016 Cat 1055D, (2)Cat TL1055, Cat TL943, (4)Unused Skytrak 10054, Unused Skytrak 8042, (2)2013 Skytrak 8042, 2016 Skytrak 6036, 2013-2012 Genie GTH-1056, (2)Genie GTH-5519, IR VR-90B, **ROUGH TERRAIN FORKLIFT:** JCB 930, **7 FORKLIFTS:** Taylor TE1805, 2012 Hyster S155FT, Hyster S120FT, (3)Hyster H50FT, Yale GDP050, **38 BOOM LIFTS:** (2)Genie S-125, (4)Genie S-85(Recond.), Genie Z80/60(Recond.), Genie S-80, Genie Z60/34(Recond.), Genie Z60/34RT, (4)Genie S-60, Genie Z45, 2012 Genie Z40/23N, Genie S40, 2012 Genie Z30/20, Unused JLG 1350, 2017 JLG 1350SJP, (3)JLG 1250AJP, JLG 800S, JLG 600AJN, (2)Unused JLG 460SJ, (3)Unused JLG 450AJ, Unused JLG E450AJ, JLG 450AJ, 2012 JLG E400A, 2009 JLG E400AJPN, (3)Unused JLG 340AJ, Unused JLG E300AJP, **20 SCISSOR LIFTS:** Genie GS-5390, Genie GS-4390, (2)2009 Genie AWP-40S, 2012 Genie GR-15, Genie GS-3232, Skyjack SJ7135RT, 2014 Skyjack SJ114632, 2014 Skyjack SJ114626, (2)2013 Skyjack SJ3226, 2012 Skyjack SJ113219, Skyjack SJ3219, (4)Unused JLG 19R, JLG 1230ES, (2) JLG 20MVL, **4 AIR COMPRESSORS:** (2)Atlas Copco XAS1600, 2017 Atlas Copco XAS110, IR XP375, **12 GENERATORS:** Cat XQ200, (5)Cat XQ100, (3)Cat XQ60, Himonisa 135Kw, Like New 2011 L3 MEP806B, Like New 2011 L3 OFNW8, **9 WELDERS:** 2014 Lincoln Vantage 500, Lincoln 305G, Lincoln 300, Lincoln 250, Lincoln Ranger, (3)Miller 300, (2)Miller 250, **3 LIGHT PLANTS:** 2018 Magnum Pro MLT6SM, 2011 Allmand Nite Lite Pro, 2012 Terex AL4000, **4 CONVEYORS & STACKERS:** Rock Screener Conveyor, Soil Pulverizer w/Conveyor, 45ft. Conveyor w/Hopper, 40ft. Conveyor w/Hopper, **18 AGRICULTURAL TRACTORS:** JD 6115D, Unused JD 5075E, (2)Unused JD 5065E, (3)New NH TS6.120, (10)New NH TS6.110, NH Workmaster-12D, **3 UTILITY TRACTORS:** 2018 JD 4044R, (2)JD 1070, **4 TRACTOR LOADERS:** Unused JD 5045E, (2)NH Workmaster-60, Kubota M9960D, **2 TRENCHING DRILLS:** Ditch Witch JT2720, Ditch Witch JT4020, **VACUUM UNIT:** Ditch Witch FX30, **2 MIXING UNITS:** (2)Ditch Witch FM13, **11 COMMERCIAL MOWERS:** (2)New Bad Boy Outlaw Rebel, (2)New Bad Boy Maverick, New Bad Boy Avenger ZT Elite, New Bad Boy Magnum, (2)New Bad Boy MZ Series, (3)New Hustler Dash(42" 0-turn), **13 SWEEPERS:** (2)2017 Superior SM80K, 2013 Superior 80CT, (3)2017 Broce CRT350, (5)2016 Terramite Commander, Laymor SM300, 2009 Laymor 8C, **3 WATER TANKERS:** Cat 769C, Cat 613C, Volvo A30X, **WATER TRUCK:** 2019 Kenworth T370(4000gal), **DISTRIBUTOR TRUCK:** IH S1900, **FLATBED TRUCK:** 2005 Ford F350XL, **4 SERVICE TRUCKS:** 2016 Ford F450, 2007 Ford F350, 2008 IH 7300SFA, IH 4800, **BOOM & SERVICE TRUCK:** 1986 Western Star(t/a), **BUCKET TRUCK:** 2010 Freightliner M2(t/a), **VACUUM TRUCK:** 2010 IH 7500, **2 CONCRETE MIXER TRUCKS:** (2)2006 Terex Advance(t/a), **4 DUMP TRUCKS:** (2)Unused Peterbilt 567(tr), 1999 Mack RD688S, 2009 Ford F550, **FUEL & LUBE TRUCK:** 2005 Mack CV713, **7 TRUCK TRACTORS:** 2016 Mack CHU613(t/a), (4)2015 Mack CXU613(t/a), Mack RW753, 2012 IH 8600(t/a), **2 SPORT UTILITY VEHICLES:** 2013 Ford Escape, 2003 Ford Expedition, **6 PICKUP TRUCKS:** (3)2016 Nissan Frontier, 2008-2005 Ford F350, Ford F250, **10 DETACHABLE GOOSENECK TRAILERS:** 2020 Liddell C55, (9)2021 Witzco RG52, **UTILITY TRAILER:** 2011 Best Trail UP4X6T, **1084 NEW SUPPORT EQUIPMENT.**



For BID ONLINE
technical assistance call
Proxibid: (855) 636-6461
Nextlot: (919) 361-1111

SALE SITE PHONE: (407) 239-2700

FL LICENSE: AB-1091 • FL AUCTIONEER: AU-1548 Jack Lyon

ALEX LYON & SON

SALES MANAGERS & AUCTIONEERS, INC., BRIDGEPORT, NY 13030

Phone: (315) 633-2944 • Fax: (315) 633-5635

Go to WWW.LYONAUCTION.COM for a Complete List, Descriptions, and Pictures



TIMED AUCTION

JANUARY 27TH 8AM - FEBRUARY 3RD 5PM

HIGHLY MOTIVATED SELLER! • SELLS TO OWNERS CONFIRMATION.

LEAR JET 70



2015 BOMBARDIER LEARJET 70
1,990 Hours, 1,681 Cycles



EXTERIOR
Height: 14ft., Wing Span: 50ft. 11in., Length: 56ft.



AVIONICS
Garmin G5000
w/high resolution displays



INTERIOR
Height: 4ft. 11in., Width: 5ft. 1in., Length: 17ft. 8in.
Volume: 363 cu. ft., Internal Baggage: 65 cu. ft.



POWER PLANT
Engines: 2
Engine Mfg.: Honeywell
Engine Model: TFE731-40BR

DISTANCES
Takeoff: 4,440 ft.
Balanced Field Length: 4,230 ft.
Landing: 2,660 ft.

OPERATING WEIGHTS

Max T/O: 21,500 lb.
Max Landing: 19,200 lb.
Operating: 13,715 lb.
Fuel Capacity: 6,062 lb.
Payload W/Full Fuel: 1,973 lb.
Max Payload: 2,285 lb.



ADDITIONAL SPECS

Total Capacity: 9, 2-Crew, 6-Passenger
Lavatory (Acts as additional seat)
Distance: 2,370 Nautical Miles, **Top Speed:** 514mph

Special Note: All potential buyers can inspect the airplane by appointment.
Please contact: Scott Moyer (315-439-7740).
Plane will be hanging in Kissimmee, Florida.

Terms: 5.99% administration fee will be assessed when paying with cash or good check.
A refundable \$25,000 wire transfer must be sent to Alex Lyon & Son Auctioneers to be approved to bid.



AUCTION CALENDAR

Go to WWW.LYONAUCTION.COM for START-STOP times on TIMED / VIRTUAL AUCTIONS

1. **LIVE:** Friday, January 15: **RACINE, WISCONSIN:** (75) Truck Tractors Plus a Complete Estate of Late Model Construction Equipment, Equipment Trailers, Truck Tractors, 2016-(2)2015 Kobelco SK85C.

2. **TIMED:** Saturday, January 16 to Wednesday, January 20: **SYRACUSE (BRIDGEPORT), NEW YORK:** Very Large Construction Equipment Auction. Cranes, Boom Lifts, Scissor Lifts, (20+) Forklifts, Skid Steers, Air Compressors, Light Plants, Generators, Very Large Quantity Support, Attachments, Tagalongs, Pickups and Services Trucks.

3. **LIVE:** Tuesday, January 19: **AMARILLO, TEXAS:** Major Job Completion Auction. Construction & Earthmoving Equipment, Various Types of Trucks, Trailers Attachments and Support Equipment.

4. **LIVE:** Friday, January 22: **COLUMBUS (DELAWARE), OHIO:** Very Late Model Cat, John Deere, Komatsu Rentals, Aerials, Trucks and Trailers. **HIGHLIGHTS:** (2)2018 Cat D8T, Cat D3GXL, (2)2018 Cat 953D, (2)Cat 980M, Cat 966M, (3)2019 Cat 938M.

5. **TIMED:** Wednesday, January 27 through Wednesday, February 3: **ORLANDO (KISSIMMEE), FLORIDA:** 2015 LearJet 70 Airplane. Fully Loaded, 2,000 hours. For Details Call (315) 439-7740. Ask for Scott.

6. **ONLINE AUCTION:** Friday, January 29: **QUERETARO, MEXICO:** Late Model Cat, Case, John Deere, Volvo Construction Equipment, Aerial Lifts, Forklifts, Trucks and Trailers, Large Quantity Attachments & Support Equipment.

7-15. **LIVE/TIMED:** Saturday, January 30 through Sunday, February 7: **ORLANDO (KISSIMMEE), FLORIDA:** 28th Annual Florida Rental Return Auction of The Finest New and Like-New Construction, Utility Equipment, Aerial Lifts, Forklifts, Landscape Tractors, Cranes, Air Compressors, Welders, Light Plants, Generators, Golf & Utility Carts, Pickups, Service Trucks, Dump Trucks, Truck Tractors, Water Trucks, Plus Very Large Quantity of Attachments, Tires, Tanks and Much More. **NOTE:** Day 1 is TIMED, January 25 - 30, Day 2 is TIMED January 26 - 31. Days 3-9 are LIVE/ONSITE February 1-7. Day 5 Part 2 is TIMED January 27-February 3. Go to www.lyonauktion.com for more information.

16. **TIMED:** Thursday, February 25 through Thursday, March 4: **HOUSTON, TEXAS:** Late Model Rental Fleet Construction Equipment, Aerial Lifts, Forklifts, Utility Vehicles, Trucks and Trailers.

17. **LIVE:** Thursday, March 11: **FT. WORTH, TEXAS:** Late Model Rental Fleet Construction, Utility Equipment, Forklifts, Aerial Lifts, Support Equipment, Trucks, Trailers, Attachments.

18. **LIVE:** Friday, March 12: **DALLAS, TEXAS:** Major Job Completion. Late Model-Mostly Cat Construction Equipment, Dump Trucks, Truck Tractors, Service, Pickup and Utility Trucks, All Types of Trailers and Support Equipment.

19. **LIVE:** Saturday, March 13: **LAS VEGAS, NEVADA:** Late Model Rental Construction, Utility Equipment, Telescopic & Warehouse Forklifts, Large Quantity Boom & Scissor Lifts, Light Plants, Generators, Welders, Air Compressors, Pickups, Trailers and Support Equipment.

20. **LIVE:** Thursday, March 18: **CENTRAL, NEW JERSEY:** 2 Job Completions at Same Time. Large Cranes (Crawler, Rough Terrain), Large Quantity of Boom, Headache Balls, Tails, Accessories, Truck Tractors, Various Types of Trailers and Large Quantity Support (Quality Throughout).

21. **LIVE:** Friday, March 19: **PARKERSBURG, WEST VIRGINIA:** Late Model Cat

Komatsu, John Deere Construction Equipment, Booms, Scissors, Forklifts, Truck Tractors, Dump Trucks, Service Trucks, Attachments & Tools.

22. **LIVE:** Wednesday, March 24: **HOUSTON, TEXAS:** Rentals, Rentals. Late Model Cat, Komatsu, John Deere Construction Equipment, Aerials, Forklifts, Trucks, Trailers, Service Trucks.

23. **LIVE:** Thursday, March 25: **SAN ANGELO, TEXAS:** Very Late Model Rental Fleet Construction, Utility Equipment, Attachments, Support, Trucks, Trailers.

24. **LIVE:** Saturday, March 27: **CENTRAL CONNECTICUT:** Retirement Auction. Over 51 years in Business. Construction, Utility, Aggregate Equipment, Dump Trucks, Truck Tractors, Service & Pickups, Various Trailers, Large Quantity Attachments and Shop Equipment.

25-27. **LIVE:** Thursday, April 8 through Saturday, April 10: **ATLANTIC CITY, NEW JERSEY:** Annual 3-Day Construction Equipment, Aerial Lift, Transportation, Support and Attachment Auction. The Finest Sale of Quality Equipment on the East Coast.

28. **LIVE:** Thursday, April 15: **PITTSBURGH, PENNSYLVANIA:** Multi-Job Completion Auction. Late Model Cat, John Deere, Komatsu Construction Equipment Plus Aerial Lifts, Forklifts, All Types of Trucks & Trailers, Attachments.

29. **LIVE:** Saturday, May 8: **PARKERSBURG, WEST VIRGINIA:** Complete Retirement Auction. Approximately 100 Antique Collectible Cars and Trucks Plus Truck Tractors and Trailers, that were used to Transport the Collectibles Properly. Small Amount of Late Model Skid Steers, Mini & Midi Excavators.

30. **LIVE:** Saturday, May 8: **ATHENS (KNOXVILLE), TENNESSEE:** Four Prime Commercial Properties and Construction Equipment.

NEW DATES TO BE ANNOUNCED

31. **NEW ENGLAND:** Retirement Auction (over 70 years of collecting only the best). One of the Finest Collections of Antique Construction Equipment: Cat, Holt, JD, IH. Ag Equipment, Truck Tractors, Dump Trucks (Everything is Beautiful and Operating), Collectible Toys, Dolls, Large Quantity of Parts. Never Before has there been a Sale Like This.

32. **MONTREAL, CANADA:** Late Model Rental Returns, Utility Equipment, Aerials, Trucks, Trailers, Support Equipment.

33. **LINCOLN, MAINE:** Two Major Job Completions. 1 Very Large Forestry Featuring All Types of Logging Equipment and Trucks, and 1 Large Construction Equipment Spread of Later Model Cat, Komatsu, John Deere, New Holland Earthmoving Equipment, Forklifts, Aerials, Generators, Air Compressors and more.

34. **PORTLAND (AUBURN), MAINE:** Retirement Auction. Late Model Cat, Komatsu, Case, Volvo Construction Equipment, Plus Telehandlers, Generators, Boom & Scissor Lifts, Trucks, Trailers and Support.

35. **FAYETTEVILLE, ARKANSAS:** Late Model Construction, Utility, Compact Equipment, Agricultural Tractors & Farm Implements, Large Quantity Landscape Equipment 0° Radius Movement, Utility Vehicles, 4-Wheelers and more.

36. **TORONTO, CANADA:** Late Model Rentals of Agricultural Equipment, Construction Equipment, Attachments, Tools, Support, Various Trucks and Trailers.

MAIN OFFICE

315.633.2944 • 315.633.2872 • 315.633.9544
EVENINGS: (315) 637-8912, FAX: (315) 633-8010

BRANCH OFFICES

ATLANTA, GA	770.537.7386	MOBILE, AL	251.510.1538
BRATTLEBORO, VT	802.490.7894	NASHVILLE, TN	615.922.5197
CHICAGO, IL	312.724.5474	NEW LONDON, CT	860.924.7735
COLUMBUS, OH	614.254.5596	OKLAHOMA CITY, OK	405.438.3188
DALLAS, TX	972.725.7761	PARKERSBURG, WV	304.699.3050
DENVER, CO	515.414.2868	RACINE, WI	262.886.2778
DES MOINES, IA	720.277.0263	ST. LOUIS, MO	314.570.4127
FORT WORTH, TX	817.807.2761	TAMPA, FL	813.777.3273
HARRISBURG, PA	717.836.0919	WASHINGTON, DC	202.888.6003
HOUSTON, TX	832.450.3910	MONTREAL, CA	514.949.7500
LAS VEGAS, NV	702.475.4992	OTTAWA, ON	514.916.4656

FOLLOW US:   

FINANCING AVAILABLE FOR PRE-APPROVED PURCHASERS: You must have prior written approval!

PATRIOT FINANCIAL LLC: Your one stop shop for all of your auction and equipment needs. For immediate or pre-auction approval please call Customer Service at 866-633-6003 or you may apply on line with our secure site at www.patriotfinancialllc.com. You may also visit us at certain auctions to get your on-site approval. We do 100% financing, with no age restrictions and our minimum loan amount is \$5,000.00. We welcome new start-up business.

STREAMLINE FINANCIAL SERVICES is a nationally recognized lending specialist working with auction companies and vendors on a daily basis to assist their customers obtain financing for equipment. We offer a variety of financial solutions for light duty to heavy duty, titled equipment (trucks and trailers) to all non-titled equipment (yellow iron, aerial lifts, chippers, skid steers, etc). The representatives at Streamline Financial are experts in finding the best financial program for construction and transportation equipment. We have a solution for all levels of credit from A+ to challenged, and also offer Line of Credit and Working Capital programs to complement your businesses cash flow constraints. Please call Customer Service at 440-358-5060.

OAKMONT CAPITAL SERVICES, LLC is a fast, affordable, reputable solution to financing. Founded in 1998 by Managing Members Joe Leonard, CLFP and Megan Zoba. Oakmont Capital Services (OCS) is a direct lender, providing commercial equipment financing and working capital throughout all 50 states. The professional financing staff at OCS has the combined experience of over 250 years in the industry and specializes in both titled and non-titled equipment funding. For over 20 years, we've been helping customers secure financing while offering quick turnarounds, no down payments, application only financing, E-docs for speedy processing plus A, B, and C credit options. Call Mike Macy, Business Development Officer at 315-744-3626 for pre-approval.

SMART BUSINESS CREDIT & LEASING: For instant credit approvals, contact Customer Service at 800-798-6862, or visit our on-site trailer at select auctions. Also available is a secure online application: www.smartbusinesscredit.com 100% financing or leasing & customized financial packages available (\$10,000 minimum).

SALES TAX: All sales are subject to sales tax.

SALES TAX EXEMPTIONS: Buyers with a VALID exemption certificate are not required to pay sales tax for equipment and miscellaneous, but MUST present a copy of their certificate at time of registration at EACH SALE.

EXPORTERS: If you take possession of your purchase in the United States, you must pay sales tax. You must provide the following in order not to be charged: Bill of Lading - All export purchases must be removed by a trucking company. The trucking company will provide a Bill of Lading with the purchases listed.

NOTE: No items will be released without this document or you may pay tax and be reimbursed once the Bill of Lading or a Dock Receipt is received.

MOTOR VEHICLES AND TRAILER EXEMPTIONS: Specific for each state. Please call office for exemption details.



7697 ROUTE 31, PO BOX 610
BRIDGEPORT, NY 13030

PRESORT
FIRST CLASS
U.S. POSTAGE
PAID
ROCHESTER, NY
PERMIT No. 944

All information contained in this brochure was derived from sources believed to be correct, but not guaranteed. We shall not be held liable for any typographical errors or inaccuracies in the content of this brochure. All announcements made day of sale supersede any printed material.



PLEASE SCAN
QR CODE
FOR UP-TO-DATE
CALENDAR AND
EQUIPMENT LISTS

AMARILLO, TEXAS
TUESDAY, JANUARY 19TH AT 10:00 AM

****ONSITE/VIRTUAL LIVE AUCTION****
MAJOR JOB COMPLETION AUCTION
L.A. FULLER & SONS CONSTRUCTION
CONSTRUCTION & EARTHMOVING EQUIPMENT, VARIOUS TYPES OF
TRUCKS, TRAILERS ATTACHMENTS AND SUPPORT EQUIPMENT



DELAWARE, OHIO
FRIDAY, JANUARY 22ND AT 9:30 AM

****ONSITE/VIRTUAL LIVE AUCTION****
VERY LARGE LATE MODEL
CONSTRUCTION EQUIPMENT, DUMP TRUCK,
TRUCK TRACTOR & TRAILER AUCTION
VERY LATE MODEL CAT, JOHN DEERE, KOMATSU RENTALS,
AERIALS, TRUCKS AND TRAILERS



SPECIAL NOTE: These auctions will be a **Live, In-Person event**. Masks required. All people attending must follow CDC guidelines for social distancing and hand-washing. Thank you in advance for adhering to these requirements, we appreciate your cooperation!

315.633.2944

lyonauction.com

lyonauctionlive.com

lyonmexico.com