



**SALES MANAGERS & AUCTIONEERS**

**BIG ENOUGH FOR  
THE INDUSTRY LEADERS,  
YET PERSONAL ENOUGH  
FOR AMERICA'S FARMER.**

**AMERICA'S  
AUCTION COMPANY**

**ANJOU (MONTREAL), QUEBEC, CANADA - SATURDAY, MARCH 24<sup>TH</sup> AT 9:30 AM**

**COMPLETE LIQUIDATION- DAY 1**

**EXCAVATIONS GILBERT THEORET INC.**

**LATE MODEL CONSTRUCTION, UTILITY, AND AGRICULTURAL EQUIPMENT, TRUCKS, TRAILERS, SUPPORT**

**WOODSTOCK, ONTARIO, CANADA - MONDAY, MARCH 26<sup>TH</sup> AT 9:00 AM**

**LATE MODEL AGRICULTURAL & CONSTRUCTION EQUIPMENT AUCTION**

**LATE MODEL AG TRACTORS, TILLAGE, HAY, HARVESTING EQUIPMENT, AIR COMPRESSORS, WELDERS,  
GENERATORS, LIGHT PLANTS, HYDRAULIC EXCAVATORS, SKID STEERS, UTILITY TRACTORS,  
CRAWLER TRACTORS, TRACTOR LOADER BACKHOES, ATTACHMENTS, SUPPORT EQUIPMENT**



**BLANKET, TEXAS - THURSDAY, MARCH 29<sup>TH</sup> AT 11:00 AM**

**MAJOR JOB COMPLETION AUCTION**

**PRATER EQUIPMENT COMPANY INC.**

**LARGE EARTHMOVING EQUIPMENT, TRUCK TRACTORS, EQUIPMENT  
TRAILERS, SUPPORT, ATTACHMENTS AND TOOLS**



**MIDDLETOWN, NEW YORK - FRIDAY, MARCH 30<sup>TH</sup> AT 9:30 AM**

**LATE MODEL RENTAL FLEET CONSTRUCTION EQUIPMENT  
& TRUCK AUCTION**



**LATE MODEL CAT, KOMATSU, JOHN DEERE  
CONSTRUCTION & UTILITY EQUIPMENT,  
ATTACHMENTS, TOOLS, DUMP TRUCKS, TRAILERS**



**HOUSTON, TEXAS - TUESDAY, APRIL 3<sup>RD</sup> AT 11:00 AM**

**RENTALS, RENTALS, RENTALS**

**LATE MODEL CONSTRUCTION, AGRICULTURAL  
EQUIPMENT, AERIALS, FORKLIFTS, ATTACHMENTS,  
SUPPORT, TRAILERS, TRUCKS**



**ALEX LYON & SON SALES MANAGERS & AUCTIONEERS, INC.**

**2018**

**7697 ROUTE 31, PO BOX 610, BRIDGEPORT, NY 13030 315-633-2944 FAX: 315-633-8010 LYONAUCTION.COM**

# 2-DAY AUCTION COMPLETE LIQUIDATION

~ Excavations Gilbert Theoret Inc. ~



**MARCH 24<sup>TH</sup> @ 9:30 AM**



**11101 rue Mirabeau , Anjou, QC, H1J 2S2**



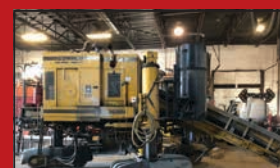
Ford F250



Concrete Saw Truck



Fuso Platform & Ramp



Gomaco GT 3600



Skyjack SJ3226



Concrete Saw



John Deere 710J



Gomaco Commander III



Sterling Dump Truck



Larochelle Dompeur Steel



Ford & Chevy Pickup Trucks



Kubota R520S



Sidewalk/Curb Forms



Quick Attach Couplers



Storage Buildings



Wrought Iron Driveway Gates

**HIGHLIGHTS:** (10)Ford & GMC Pickup Trucks, (2)Ford 550 Super Duty, Dodge Caravan, Concrete & Concrete Sawing Tools, Shapes & Parts for Sidewalk & Curb Construction, Concrete Saws, Ceramic Saw, Vibratory Plates, Jumping Jack, Complete Garage Tools, (2)Truck Lifts, Air Jacks & Hydraulics, Transmission Jacks, Several Welders, Drills, Oil Tanks, Greasing Machines, Tire Machine, Swing Machine Tires, Air Compressors, Generators, Snap-On Tools, Battery Chargers, Power Packs, Filter Feeders, Woodworking Equipment, Saws, Table Saw, Lev-Co Extraction Arm System, Artopex Office Furniture, (3)Photocopiers, (2)Kyocera and (1)Konica-Minolta, (8)EasyKleen Pressure Washer Machines(new), Removable Garage and Shelters(new), Truck Parts, Industrial Shelving (Racking), Quantity of New Bricks, Quantity of Paving Stone, Reinforcing Steel(new), Steel Plates for Streets Under Construction, (6)STORAGE BUILDINGS: (2)Unused 30ft.x65ft.x15ft. Peak Ceiling, Unused 20ft. x30ft.x12ft. Peak Ceiling, Unused 20ft.x20ft. Container Storage Shelter, (2)Unused 8ft.x10ft. Twin Wall Green House, NEW SUPPORT EQUIPMENT: 80in. HD Multi-Drawer Tool Cabinet, HD Steel Warehouse Shelving Rack, (2)10ft. 20-Drawer HD Metal Work Benches, 20ft. HD Bi-Parting Wrought Iron Driveway Gate, 10-ton Digital Floor Scale, 50-ton Hydraulic Shop Press, HD Tamping Rammer, (2)HD Tire Changer, HD Wheel Balancer, (2)HD Plate Compactor, (2)3-PTO HD Wood Chipper, ATTACHMENTS: (3)94in. Hydraulic Dozer Blades, 3-PTO HD Backhoe, (2 pair) 72in. Fork Extensions.

**Joel Gauthier: (514) 949-7500 / joel@lyoncanada.com**  
**Charles Gauthier: (514) 916-4656 / charles@lyoncanada.com**







## UNRESERVED AGRICULTURAL AND CONSTRUCTION EQUIPMENT

# AUCTION

Monday March 26, 2018 @ 9:00AM

Hosted by Sunrise Equipment Auctions Inc., 593249 County Road 13, Norwich, Ontario

### EQUIPMENT LIST

#### LAWN AND GARDEN

**JOHN DEERE 345** GAS, HYDRO, 54" DECK, POWER STEERING  
**JOHN DEERE 425** GAS, HYDRO, 54" MOWER, MCS519 COLLECTION SYSTEM, 536 HRS  
**JOHN DEERE G335D** GAS, HYDRO, 48" MOWER  
**JOHN DEERE LX176** GAS, HYDRO, 38" MOWER  
**JOHN DEERE LX 277** GAS, HYDRO, 4" MOWER, 40" SNOWBLOWER  
**2007 JOHN DEERE X300** GAS, HYDRO, 42" MOWER  
**2014 JOHN DEERE X304** GAS, HYDRO, 42" MOWER, 635 HRS  
**JOHN DEERE X320** GAS, HYDRO, 48" MOWER  
**JOHN DEERE X728** GAS, HYDRO, ALL WHEEL DRIVE, 60" MOWER, 3 POINT AND PTO  
**KUBOTA GR2100** DIESEL, HYDRO, 54" MOWER, GLIDE STEER, 625 HRS  
**KUBOTA T2080** GAS, HYDRO, 42" MOWER  
**MASSEY 2720** GAS, HYDRO, 44" MOWER, 322 HRS  
**SIMPLICITY 18H** GAS, HYDRO, 42" MOWER  
**2010 JOHN DEERE 1445** FRONT DECK MOWER, DIESEL, 2307 HRS  
**2014 KUBOTA ZD326** ZERO TURNMOWER, DIESEL, 60" MOWER, 391 HRS  
**ARIENS PRO 32**, 32" MOWER  
**2000 JOHN DEERE 425** RIDING MOWER  
**2002 BERTI 3PTH** ROTOTILLER  
**2009 CUB CADET ENFORCER** ZERO TURN MOWER  
**2005 HUSQVARNA** RIDING MOWER  
**2007 WALKER GHS** RIDING MOWER, DIESEL

#### TILLAGE EQUIPMENT

**2012 SUNFLOWER 6630**, VERTICAL TILL, 32" WIDE, 3 SECTION FOLD  
**WHITE 273** DISC, 21" WIDE, 9" SPACING  
**WILRICH 3400** CULTIVATOR, 42" WIDE, REAR HITCH AND HYDRAULICS, 4 BAR COILTINE  
**KONGSKILDE** CULTIVATOR, 15" WIDE, S-TINE,

#### SKID STEERS

**JOHN DEERE 325** SKID STEER, DIESEL, FOOT CONTROLS, 72" BUCKET, 3400

#### ROLLER

**2012 HAMM 10C** DIESEL, VIBRATING ROLLER, 837HRS, 1.5TON, DOUBLE DRUM

#### PLANTING EQUIPMENT

**CASE 900** PLANTER, 6 ROW, 30" ROWS, DRY FERTILIZER, PTO PUMP  
**JOHN DEERE 750**, NO TILL DRILL, 20" WIDE, 7.5" SPACING, LIQUID FERTILIZER, MARKERS  
**JOHN DEERE 8350** DRILL, 12" WIDE, 7.5" SPAC-

#### ANTIQUE TRACTORS

**JOHN DEERE 720**  
**JOHN DEERE A**  
**JOHN DEERE 530**  
**IHC 560**, DIESEL WIDE FRONT  
**IHC SUPER**, W/CULTIVATOR  
**FARMALL CUB**, W/PLOW & MOWER

#### UTILITY VEHICLES/ATV

**2009 SUZUKI 750** KING QUAD ATV, 4WD

#### CONSTRUCTION - LOADER BACKHOES

**2012 CASE 580N**, 4WD, CAB, AIR, EXTENDA-HOE, 5900HRS  
**2008 NEW HOLLAND B110B**, 4WD, CAB, AIR, EXTENDA-HOE

#### FARM TRACTORS

**2014 JOHN DEERE 8260 R**, 1106HRS, MFWD, CAB, AIR, POWERSHIFT, 4 REMOTES, AXLE DUALS (VERY CLEAN, ONEOWNER TRACTOR)  
**2012 JOHN DEERE 8285R**, PREMIUM MFWD, I/V TRANSMISSION, 42KM TRANSMISSION, 5 REPORTS, CAB, AIR, 380/54 DUAL, 2047HRS  
**FENDT - 712 VARIO**, 4WD, 3052HRS, CAB, AIR  
**2015 NEW HOLLAND T7 190**, 4WD, CVT TRANS MISSION, SUSPENSION, 1650 HRS, NEW HOLLAND 855 LOADER  
**2004 McCORMICK MTX 185**, 4WD, CAB, 4500HRS, DUALS, WEIGHTS  
**2014 CASE IH FARMALL 115U** 4WD, CAB, 900HRS  
**NEW HOLLAND 4630**, 4WD, OPEN, LOADER  
**NEW HOLLAND 5610** 2WD, 1500 HRS, OPEN  
**MASSEY 375** 2WD, OPEN, 2100HRS  
**JOHN DEERE 4300**, 4WD  
**2004 CASE IH MXM 130**, 4WD, 2500HRS  
**JOHN DEERE 6420**, 4WD, I/V TRANSMISSION, CAB 4900HRS  
**JOHN DEERE 4240**, CAB  
**JOHN DEERE 6300**, 4WD, LOADER  
**JOHN DEERE 6410**, 4WD, CAB  
**JOHN DEERE 2130**, FRONT BLOWER  
**JOHN DEERE 2120**, LOADER  
**FORD 4600** DIESEL, 2WD  
**KUBOTA B2410** 4WD, LOADER, MOWER  
**2015 MASSEY 1754** DIESEL, 187HRS, HYDRO, CAB, LOADER, SNOWBLOWER, 84" BLADE  
**KUBOTA B7100** 4WD, MOWER  
**IHC 5488**, 4WD, CAB, AIR  
**NEW HOLLAND TD 5050**, 4WD, CAB, LOADER  
**JOHN DEERE 7720**, 4WD, CAB  
**CASE 2090**, CAB, POWERSHIFT, 2WD, 20.8X38 TIRES, 4772 HRS  
**2012 JOHN DEERE 5045E**, MFWD, ROPS, 14.9X28, 2138 HRS  
**2012 JOHN DEERE 5055E**, MFWD, ROPS, 16.9X28, 2683 HRS  
**2012 JOHN DEERE 5065E**, MFWD, ROPS, 13.9X28, 2076 HRS  
**2013 JOHN DEERE 6105D**, MFWD, ROPS, 18.4X34, 2216 HRS, LOADER READY  
**2013 JOHN DEERE 6125M**, 2WD, DELUXE CAB, 420/38, POWER QUAD, 2244 HRS  
**2014 JOHN DEERE 6125R**, MFWD, CAB, 480/38, I/V, 40K SPEED, FRONT HITCH, 249 HRS  
**2008 JOHN DEERE 6430**, MFWD, PREMIUM CAB, 18.4X34, Q55 LOADER, 1040 HRS  
**2004 JOHN DEERE 7720**, MFWD, 6000 HRS, ORIGINAL AND CLEAN  
**2007 NEW HOLLAND TN 85DA**, MFWD, CAB, LOADER, 2000 HRS  
**2005 CASE IH MXU 110**, MFWD, CAB, 6300 HRS  
**MASSEY 20C** TRACTOR LOADER, DIESEL, PTO, 3 POINT  
**JOHN DEERE 1630**, DIESEL, POWER STEERING  
**GENERATORS & LIGHT TOWERS**  
**WACKER NUESON G50** DIESEL GENERATOR, 38KW, 3153HRS  
**2012 MAGNUM 16-20K** LIGHT TOWER, DIESEL  
**2012 MAGNUM 16-20K** LIGHT TOWER, DIESEL

#### MISC EQUIPMENT

**HORST 72"** GRAPPLE FORK ATTACHMENT  
**JOHN DEERE 1.1METER** LOADER BUCKET  
**HORST ADAPTER PLATE**, JD 640 TO ALO  
**HORST 78"** SNOW BUCKET  
**HORST PALLET FORK** FOR AL595Q  
**HORST BALE SPEAR**  
**FRONTLINK FRONT 3 POINT** HITCH ATTACHMENT  
**MARKET CROSS AUGER** FOR JOHN DEERE 7000  
**HAUKAAS MARKERS**  
**MASCHIO 160 FLAIL** MOWER 1.6 METER WIDE  
**MARKET 12X8"** AUGER  
**MARTACH BUCKET ADAPTER**  
**BERCO ROTO TILLER**  
**AGCO 72D** FINISH MOWER, 72" WIDE  
**FARM KING 530** FINISH MOWER  
**FARM KING Y430** FINISH MOWER  
**FARM KING Y555** FINISH MOWER  
**JOHN DEERE 52RB**, 52" ROTARY BROOM  
**GRAVELY 36** POWER BRUSH  
**LAND PRIDE 1'** FINISH MOWER, FOLDING WINGS, TOW TYPE  
**CARONI FINISH MOWER 72"** WIDE  
**ECHO WT190** WALK BEHIND STRING TRIMMER  
**WALCO WOOD CHIPPER** 6" HYDRAULIC FEED, 540 PTO  
**FRONTIER RB 1172** REAR BLADE  
**JOHN DEERE 54** FRONT BLADE, 54" WIDE  
**JOHN DEERE 53"** GENERAL PURPOSE BUCKET  
**JOHN DEERE 10540** MOWER DECK, 54" WIDE, DRIVE OVER  
**JOHN DEERE 10600** MOWER DECK, 60" WIDE  
**JOHN DEERE 72D** MOWER DECK  
**WALCO W6** FINISH MOWER, 72" WIDE  
**JOHN DEERE 54PB** BLOWER, 54" WIDE  
**JOHN DEERE 60** MOWER DECK, 60" WIDE  
**HAY EQUIPMENT**  
**HESSTON 3312 DISC** MOWER 13" WIDE, CENTER PIVOT, JIFFY 900 BALE GRINDER 1000 PTO, LEFT SIDE DISCHARGE  
**JOHN DEERE 530** MOCO MOWER CONDITIONER  
**NEW HOLLAND 166** HAY MERGER  
**CONSTRUCTION - EXCAVATORS**  
**2016 HITACHI ZX55**, CAB, AIR, AUX HYDRAULICS, UNUSED  
**2015 KOBELCO SK350LC-8**, SN: YC-05940  
 POWERED BY HINO J08 TM DIESEL ENGINE, 26HP, EQUIPPED WITH CAB, AIR, REACH BOOM, DIGGING BUCKET, LONG UNDERCARRIAGE, 2500HRS  
**2015 KOBELCO SK210LC** - 10SN: YQ12-09486  
 POWERED BY HINE K05E DIESEL ENGINE, 152HP, EQUIPPED WITH CAB, AIR, DIGGING BUCKET, LONG UNDERCARRIAGE, 2500HRS  
**TAKEUCHI TB235**, CAB, AIR, BLADE  
**TAKEUCHI TB016**, ROPS, BLADE  
**COMPACT/ESTATE TRACTORS**  
**2010 JOHN DEERE 2320** HYDRO TRANS, 270 HRS, ROPS  
**JOHN DEERE 4110** MFWD, GEAR DRIVE, 642 HRS, 60" MOWER  
**2014 KUBOTA BX1870**, 2014 KUBOTA BX1870 TRACTOR, MFWD, ROPS, LA 203 LOADER, 60" MOWER, HYDRO TRANS, 348 HRS  
**MASSEY GC 2300** MFWD, ROPS, 48" MOWER, HYDRO TRANS, 389 HRS



519.424.1562



Guest Auctioneer:  
 Alex Lyon & Sons Auctioneers



Bryan's Auction Services  
 519.837.0710

#### SELLING ON BEHALF OF:

MENICH FARMS (RETIRED FROM CASH CROPPING)  
 PLEASE NOTE: ALMOST ALL EQUIPMENT ALWAYS SHELDED  
 FOR INFO CALL FRANK MENICH 519-770-9078 • MATT MENICH 519-754-5776

#### TRACTORS

• 2007 CASE IH 380, 4X4 ARTICULATING TRACTOR, C/W DUALS, 3767 HRS, 4 REMOTES  
 • JOHN DEERE 7410, 4WD, CAB AIR, 16X16 TRANSMISSION, 14.9 X46 TIRES • IHC 504 TRACTOR, GAS, 2 ROW CULTIVATOR, 4400 HRS, ONE OWNER • IHC FARMALL H, ALL ORIGINAL, ONE OWNER • IHC 140 GAS, W/IMMOUNT MOWER • JOHN DEERE 175 GARDEN TRACTOR, HYDRO, MOWER

#### COMBINE & HEADS

2009 CASE IH 7088 COMBINE, 4WD, 1496 ENGINE HRS, 1261 SEPARATOR HRS, AFS, DELUXE CAB • 2009 CASE IH 2020 GRAIN HEAD, 30FT WIDE • CASE IH 2206 6 ROW CORN HEAD

#### SPRAYER

ROGATOR 854 SELF PROPELLED SPRAYER, 80FT BOOMS, 750 GALLON TANK

#### TRUCKS & TRAILER

2003 FREIGHTLINER T/A TRUCK TRACTOR, CAT 475, 18 SPEED TRANSMISSION, 14000 FRONT, 46000 REAR • 2001 NAVISTAR 9100 T/A GRAIN TRUCK, 20FT BELGIUM ALUMINUM DUMP BOX, CUMMINS ENGINE, 10 SPEED TRANSMISSION • 1995 IHC 9400 T/A GRAIN TRUCK, 20FT BELGIUM ALUMINUM GRAIN BOX, CUMMINS BIG BLOCK ENGINE • 1998 WILSON PACESETTER, TRI-AXLE HOPPER, DUMP GRAIN TRAILER, W/ROLL TARP • 1997 STAINLESS 7000 GALLON T/A TANKER TRAILER  
**PLEASE NOTE ALL TRUCKS & TRAILERS HAVE BEEN ON A FULL MAINTENANCE SCHEDULE BY M&L TRUCK REPAIRS**

#### EQUIPMENT

2007 JOHN DEERE 1590 NO-TILL DRILL, 2 POINT HITCH, SCALE, 15FT WIDE • CASE IH TIGERMATE 200, 42.5FT CULTIVATOR, W/DOUBLE FOLD, SPIKE & ROLLING HARROWS • 2008 JOHN DEERE 37, 10FT WHEEL DISC, W/PACKER HITCH & HYDRAULICS • BRILLION XL 144 PACKER, CROWFOOT, 40FT CROSS FOLD • NEW HOLLAND 195 SPREADER, HYDRAULIC END GATE • JOHN DEERE 1450 6 FURROW PLOW, SEMI-MOUNT • GW 500 GALLON SPRAYER MOW 204HD • MASSEY 10FT DISC • 8FT PACKER • MCKEE 750 DOUBLE AUGER SNOW BLOWER

#### SPECIAL ATTRACTION

ARKAL NETAFAIM 6" IRRIGATION FILTER SYSTEM (VERY LITTLE USE) • RAIN FLOW 1600 2 ROW TRANSPLANTER

#### M'CORMICK FARMS

#### EQUIPMENT

2015 KRONE U-150CX ROUND BALER, TANDEM AXLE, AS NEW • NEW HOLLAND 740 BALER, W/NETWRAP • NEW HOLLAND 644 BALER, W/NETWRAP • UNVERFERTH 30FT ROLLING HARROW • CASE IH 4900, 30FT VIBRESHANK CULTIVATOR W/REAR HYDRAULICS • JOHN DEERE 24FT S-TINE CULTIVATOR & HARROWS • 1000 GALLON NURSE TANKE W/46" TIRES & RIMS • YETTER 15FT NO-TILL & HARROWS • JC 24FT BELT CONVEYOR, HYDRAULIC DRIVE • BRUNS 400 GRAVITY BOX, HORST 12 TON WAGON, FERT & AUGER, POWER PAC • 350 BUSHELL GRAVITY BOX, 12 TON WAGON & AUGER, POWER PAC • 2X BRUNS 375 GRAVITY BOX, 12 TON WAGON • BRUNS 350 BUSHELL GRAVITY BOX, CENTER DUMP, 8 TON WAGON • 200 BUSHELL GRAVITY BOX ON JOHN DEERE 720 WAGON • 2500 GALLON WATER TANK & VALVE • 1000 GALLON WATER TANK & VALVE • 1100 GALLON TANK ON 10 TON WAGON • BUHLER/FARM KING 360 GRAIN CLEANER • 300/95 R52 TIRES & WHEELS FOR MF OR NH TRACTORS • 11.2 - 38 TIRES & WHEELS • 18.4 X 38 TRACTOR DUALS • 3 POINT V-DITCHER • HD 10FT 3PT • BLADE • 6FT 3PT BLADE • 3PT FORKLIFT ATTACHMENT

### THIS AUCTION WILL FEATURE AN OUTSTANDING SELECTION OF AG & CONSTRUCTION ITEMS INCLUDING:

• 2 Farmer Packages • Fleet Reduction for a Large National Rental Fleet • Dealer Inventory Reduction • Late Model AG & Construction Equipment • Lawn & Landscape Equipment & More..

Preview, Live & Online Bidding available at  
[www.sunrise-equipment.com](http://www.sunrise-equipment.com)  
 Auction Information: 519-424-1562

**Terms:** Cash or Good Cheque on the day of auction. An administration fee of 2.99% will be in effect. Any verbal announcements take precedence over any printed matter. Proprietors & Auctioneers are not responsible for accidents day of auction. No debit or credit cards. Auction list subject to additions & deletions.





# America's Auction Company

**BLANKET, TEXAS - THURSDAY, MARCH 29<sup>TH</sup> AT 11:00 AM**

**ADDRESS:** 1200 Co. Rd. 147, Blanket, TX 76432. **NOTE:** After 42 years, *Prater Equipment Co., Inc.*, is selling off their well-maintained reclamation, mining and heavy dirt equipment. **SITE PHONE:** (817) 209-9731 Ricky. **TEXAS AUCTION LICENSE:** #15791 Jack H Lyon. **TERMS & CONDITIONS:** "Cash or Company Check" accompanied by current "Bank Letter of Guarantee", made payable to Alex Lyon & Son. Everything Sells "AS IS, "WHERE IS." The following charges will apply on all purchases: (1.) For each unit \$25,001.00 and above, a 5.95% administration fee will be assessed when paying with cash or good check. (The standard fee of 8.95% will be assessed when paying with credit card); and (2.) For each unit \$1,001-\$25,000.00, a 10% administration fee will be assessed when paying with cash or good check, and a 13% fee will be assessed when paying with credit card. (3.) For each unit \$0 - \$1,000, a 12.5% administration fee will be assessed when paying with cash or good check, and a 15.5% fee will be assessed when paying with credit card.



**FOR BID ONLINE TECHNICAL ASSISTANCE CALL**  
**Proxibid:** (855) 636-6461  
**Nextlot:** (919) 361-1111

## 4 STRAIGHT FRAME HAUL TRUCKS



(2) **EUCLID R100** rebuilt diesel engine, Cab, 100 ton capacity, 27.00-49 rubber.



(2) **EUCLID E35** diesel engine, Cab, 35 ton capacity, 18.00R33 rubber.

## 5 CRAWLER TRACTORS



**CAT D11N** SN:74Z989 Cat diesel engine, EROPS, air, Straight blade with tilt, 4-barrel single shank rear ripper.



(2) **CAT D9H** Cat diesel engine, EROPS, Straight blade with tilt, 4-barrel multi-shank rear ripper.



(2) **CAT D9G** Cat diesel engine, EROPS, C blade, push block.

## MASS EXCAVATOR



**CAT 375LME** SN:6RL00056 Cat diesel engine, Cab, air, 84in. Digging bucket.

## RUBBER TIRED LOADER



**CLARK 475B** SN:421J263C Cummins VTA-1710C diesel engine, 630hp, EROPS, air, 12 yard GP bucket, 37.25 x 35 rubber.

## CRAWLER LOADER



**CAT 973** SN:86G03049 Cat diesel engine, EROPS, GP bucket, multi-shank rear ripper.

## MOTOR GRADERS



(2) **CAT 16G** Cat diesel engine, EROPS, air, moldboard, multi-shank rear ripper, 23.5 x 25 rubber.

## 13 MOTOR SCRAPERS



(2) **CAT 637D** diesel engine, EROPS, air, push pull, 37.25-35 rubber.



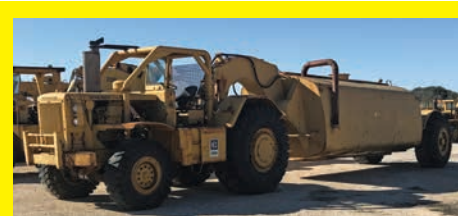
**CAT 633C** SN:66M1130 Cat diesel engine, EROPS, elevating scraper, 33.25-35 rubber.

(10) **CAT 630B** Cat diesel engine, EROPS, 37.25-35 rubber.

## SOIL COMPACTOR

**CAT 630** SN:52F196 Cat diesel engine, EROPS, padsfoot.

## WATER WAGONS



(2) **CAT 630B** Cat diesel engine, EROPS, 37.25-35 rubber.





## WATER TRUCK



**MACK RD821SX** Mack diesel engine, power steering, 5000 gallon water tank, water cannon, rear spray, push block, side fill, 445/55R22.5 front tires, 12.00R24 rear tires, tandem axle.

## SERVICE TRUCK



**2007 INTERNATIONAL 4700** VN:526876 International DT466 diesel engine, automatic transmission, power steering, service body, 10,000lb crane, welder, air compressor, product tank, hose reels, fuel tank, tool boxes, dual wheel single axle.

## SWEEPER



**MURPHY** VN:A50099 Ford diesel engine, hydraulic tank, water tank, 2-curb brooms, 1-rear broom.

## 4 UTILITY VEHICLES



**JOHN DEERE RSX850I** 4x4, fuel injected gas engine, Canopy windshield, utility body, 100 hours.



**JOHN DEERE 850D GATOR** 4x4, diesel engine, Canopy, utility body.

**POLARIS RANGER** 4x4, 800 gas fuel injected engine, Canopy, crew cab, utility body.



**KAWASAKI MULE 4010** 4x4, gas engine, metal Canopy, grill guard, power steering, utility body.

## RECREATIONAL VEHICLE



**SUZUKI KING QUAD 4 WHEELER** 4x4, gas engine.

## 3 TAGALONG TRAILERS



**UNUSED 24FT. TILT TRAILER** VN:N/A 24ft. X 83in. Tilt deck, all steel construction, hydraulic power up and down, 2 5/16in. Quick coupler, electric brakes, (2) 7000lb Torson axles, tandem axle.



**UNUSED LAMAR 16FT. TRAILER** VN:N/A 16ft. X 77in. Deck, fold flat rear ramp gate, electric brakes, 2in. Coupler, (2) 3500lb axles, tandem axle.



**UNUSED EAST TEXAS 10FT. TRAILER** VN:N/A 10ft. X 5ft. Deck, hose & lead holders, bottle racks, all steel construction, 2in. Coupler, single axle.

## OVER 100 LOTS EQUIPMENT PARTS

CAT 630B TRANSMISSIONS, RADIATORS, TORQUE CONVERTORS, HYDRAULIC CYLINDERS, DIFFERENTIALS, REAR AXLE UNITS, ENGINE & MISC PARTS.

CAT 637D USED TIRES.

EUCLID R100 SPARE DUMP CYLINDERS AND USED TIRES.

CAT D9H & G MISC PARTS.

QTY OF SPROCKETS, FINAL DRIVES, STEERING & CLUTCH PARTS

## 6 SCRAP RECYCLING EQUIPMENT

(2) NEW 2 YARD STACKABLE SELF DUMPING HOPPER 4,000lb capacity.

(2) NEW 1.5 YARD STACKABLE SELF DUMPING HOPPER 4,000lb capacity.

(2) NEW 1 YARD STACKABLE SELF DUMPING HOPPER 4,000lb capacity.

## 8 SKID STEER ATTACHMENTS

(2) NEW 2 CUBIC YARD TRASH HOPPER

(4) NEW ATTACH FRAME

(2) NEW JBX 4000 48IN. FORKS

## 56 NEW SUPPORT EQUIPMENT

(3) NEW MUSTANG LF88 PLATE COMPACTOR

NEW MUSTANG ML80S RAMMER

(6) NEW MUSTANG MP4800 2IN. SUB PUMP

(4) NEW MUSTANG CV3500 25FT., 800AMP

EXTRA HD BOOSTER CABLE

(8) NEW MUSTANG CONCRETE VIBRATOR

(8) NEW 3PC. 14IN. PREMIUM DIAMOND BLADES

(4) NEW HUSKIE B65 ELECTRIC DEMO HAMMER

(4) NEW 1/2IN. DRIVE AIR IMPACT WRENCH KIT

(2) NEW HUSKIE 11218SDS HAMMER DRILL

(4) NEW 29.5IN. X 90IN. HEAVY DUTY WORK

BENCH W/ SHELF

(4) NEW 30IN. X 57IN. WELDING TABLE

(2) NEW AR500 DUELING TREE SHOOTING TARGET FOR .22 CAL

(2) NEW 3/8IN. AR500 DUELING TREE SHOOTING TARGET

(2) NEW 3/8IN. AR500 GONG TARGET

(2) NEW 30IN. X 90IN. CATTLE & CALF FEEDER



# America's Auction Company

**MIDDLETOWN, NEW YORK - FRIDAY, MARCH 30<sup>TH</sup> AT 9:30 AM**

**ADDRESS:** 150 Carpenter Avenue, Middletown, New York 10940 (Orange County Fairgrounds upper parking lot). **NOTE:** This sale will consist of Late Model Construction & Utility Equipment, Dump Trucks, Trailers, Attachments and More. **SALE SITE PHONE:** (813) 777-3273 Tom. **TERMS & CONDITIONS:** "Cash or Company Check" accompanied by current "Bank Letter of Guarantee", made payable to Alex Lyon & Son. Everything Sells "AS IS, "WHERE IS." The following charges will apply on all purchases: (1.) For each unit \$25,001.00 and above, a 5.95% administration fee will be assessed when paying with cash or good check. (The standard fee of 8.95% will be assessed when paying with credit card); and (2.) For each unit \$1,001-\$25,000.00, a 10% administration fee will be assessed when paying with cash or good check, and a 13% fee will be assessed when paying with credit card. (3.) For each unit \$0 - \$1,000, a 12.5% administration fee will be assessed when paying with cash or good check, and a 15.5% fee will be assessed when paying with credit card.



**BID  
ONLINE**

FOR BID ONLINE TECHNICAL  
ASSISTANCE CALL  
Proxibid: (855) 636-6461  
Nextlot: (919) 361-1111

## 3 JAW CRUSHERS



**2009 KOMATSU BR580** Komatsu diesel engine, 200hp, 24in. X 42in. jaw 42in. X 30ft. discharge belt, 20in. X 10ft. folding side discharge remotes.



**2008 KOMATSU BR380** Komatsu diesel engine, 200hp, 24in. X 42in. jaw 42in. X 30ft. discharge belt, 20in. X 10ft. folding side discharge remotes.



**2007 KOMATSU BR380** Komatsu diesel engine, 200hp, 24in. X 42in. jaw 42in. X 30ft. discharge belt, 20in. X 10ft. folding side discharge remotes.

## 22 DRILLING EQUIPMENT



**VERMEER NAVIGATOR 33X44 DIRECTIONAL DRILL** SN:00347 Cummins B3.9C diesel engine, 15ft. X 2.5in. drill stems, 33-cartridges rod loader.

(4) DRILLING HEAD

(17) AMERICAN AUGER 18IN. X 25FT. AUGER SECTION

## 7 RUBBER TIRED LOADERS

**2016 CAT 926M** SN:LTE01152 Cat C7.1 ACERT diesel engine, 153hp, EROPS, air, heat, 3rd valve hydraulics, Fusion quick coupler, 2.6 yard GP bucket with BOCE, 20.5R25 rubber, low hours.



**2013 JOHN DEERE 624K** SN:VDE653956 John Deere diesel engine, EROPS, air, 3 spool, heated seat, block heater, radio, 3rd valve hydraulics, ride control, front differential lock, Z-bar quick coupler, 3 yard GP bucket, 20.5R25 rubber, 1,484 hours.



**2012 JOHN DEERE 624K** SN:TCE644729 John Deere diesel engine, EROPS, air, 3 spool, heated seat, ride control, block heater, radio, environmental drains, bottom and transmission guards, front differential lock, full fenders, JRB quick coupler, 3 yard GP bucket, 20.5R25 rubber, 2,823 hours.

**2011 JOHN DEERE 624K** SN: CBD639492 John Deere diesel engine, EROPS, air, heated seat, radio, block heater, ride control, front differential lock, 3.5 yard GP bucket, 20.5R25 rubber, 1,593 hours.

**2011 KOMATSU WA380** Komatsu diesel engine, EROPS, air, 3rd valve hydraulics, quick coupler, GP bucket, 23.5R25 rubber.

**2013 JCB 406** SN:1301955 diesel engine, EROPS, GP bucket, 780 hours.

**KUBOTA R520** SN:10891 Kubota diesel engine, EROPS, hydraulic quick coupler, GP bucket. Forks Sell Separately.

## 11 HYDRAULIC EXCAVATORS

**2014 CAT 312E** SN:PZL00431 Cat diesel engine, Cab, air, auxiliary hydraulics, digging bucket, low hours.

(2) **2017 CAT 308E2CR** Cat C3.3B diesel engine, 65hp, Cab, air, front blade, steel pads with rubber inserts, reduced tail swing, quick coupler, new 24in. digging bucket.



**2014 CAT 304ECR** SN:TTN00831 Cat diesel engine, EROPS, 2-speed, front blade, auxiliary hydraulics, rubber tracks, zero tail swing, digging bucket, 60 hours.



**2012 KOMATSU PC228LC-8** Komatsu diesel engine, Cab, air, hammer lines, zero tail swing, JRB quick coupler, 48in. Digging bucket, long undercarriage.



**2010 KOMATSU PC200LC-8** Komatsu diesel engine, Cab, air, hammer lines, 42in. Digging bucket, long undercarriage.



**2010 KOMATSU PC138US** Komatsu diesel engine, Cab, air, front blade, hammer lines, 36in. Pin on digging bucket.





(3) 2013 KUBOTA KX121-3 Kubota diesel engine, Cab, air, front blade, hammer lines, rubber tracks, digging bucket with hydraulic thumb.



2012 KUBOTA U35 Kubota diesel engine, OROPS, front blade, clean out bucket with hydraulic thumb.

### 4 EXCAVATOR THUMBS

NEW GENTEC MT2650 HD UNIVERSAL THUMB fits excavators up to 50,000lbs.

NEW GENTEC MT1440 THUMB fits loader backhoes & excavators from 13-19,000lbs.

NEW GENTEC MT830 THUMB fits loader backhoes & excavators from 6-10,000lbs.

NEW GENTEC MT824 THUMB fits loader backhoes & excavators from 4-9,000lbs.

### 5 CRAWLER TRACTORS



CAT D4GXL SN:5XK37088 Cat diesel engine, OROPS, 6 way blade, long track frame.

2008 KOMATSU D65EX-15 Komatsu diesel engine, EROPS, air, Straight blade with tilt, Multi-shank rear ripper.



2007 KOMATSU D61EX-15 Komatsu diesel engine, EROPS, air, 6 way blade, long track frame, new undercarriage.

2010 KOMATSU D51EX-15 Komatsu diesel engine, EROPS, air, 6 way blade, long track frame.



KOMATSU D39EX-21 Komatsu diesel engine, EROPS, air, 6 way blade, long track frame.

### CRAWLER DUMPS



2007 KOMATSU CD60 Komatsu diesel engine, Cab, heat, 5 cubic yard 13,000lb capacity, 360 degree rotating bed, 24in. Rubber tracks.

2006 KOMATSU CD60 Komatsu diesel engine, Cab, heat, 5 cubic yard 13,000lb capacity, 360 degree rotating bed, 24in. Rubber tracks.

### 3 TRACTOR LOADER BACKHOES

(2) CAT 446B 4x4, Cat diesel engine, EROPS, GP front bucket, rear digging bucket.

JOHN DEERE 110 UTILITY TRACTOR SN:31C-517 4x4, John Deere diesel engine, OROPS, GP front bucket. Forks Sell Separately.

### ASPHALT ROLLER



NEW UNUSED BOMAG BW120AD-5 SN:861880421288 diesel engine, ROPS, 48in. Smooth drum, vibratory drum, drum drive, water system.

### ASPHALT PAVER

2005 LEEBOY 1000D S SN:36824 Hatz diesel engine, 40hp, 8ft. to 13ft. legend screed, 5.5 ton dump hopper and steel tracks.

### VIBRATORY ROLLERS

(2) 2008 VOLVO SD45D Cummins diesel engine, OROPS, hydrostatic transmission, 54in. Smooth drum, vibratory drum, drum drive, 12.4 x 24 rubber, low hours.

### RUBBER TRACKED SKID STEERS



2015 CAT 289DXPS SN:TAW03134 Cat C3.3BDIT diesel engine, 73.4hp, EROPS, air, advance display panel, 2 speed, high flow hydraulics, electric quick coupler, GP bucket, 1,368 hours.



JOHN DEERE 332 John Deere diesel engine, EROPS, air, auxiliary hydraulics, mechanical quick coupler, rubber tracks, 72in. GP Bucket.

### 9 SKID STEERS

2015 CAT 272D SN:B5W00843 Cat C3.3 diesel engine, 110hp, EROPS, air, heat, 2-speed, auxiliary hydraulics, hydraulic quick coupler, 72in. GP bucket with cutting edge, low hours.

(4) 2015 CAT 262D Cat C3.3B DIT diesel engine, EROPS, air, heat, 2-speed, auxiliary hydraulics, hydraulic quick coupler, 72in. GP bucket with cutting edge, low hours.

2012 CAT 226B-3 SN:MWD03014 Cat diesel engine, EROPS, air, auxiliary hydraulics, mechanical quick coupler, 68in. GP bucket.

2007 KUBOTA SSV75 SN:1512349 Kubota diesel engine, EROPS, air, 2-speed, high flow auxiliary hydraulics, mechanical quick coupler, GP bucket.

NEW HOLLAND LS180 SN:181811 diesel engine, rollage, auxiliary hydraulics, mechanical quick coupler, GP bucket. Forks, Backhoe, Treespade, and stabilizers Sell Separately.



JOHN DEERE 270 John Deere diesel engine, EROPS, air, heat, auxiliary hydraulics, mechanical quick coupler, 72in. GP bucket.

### 9 SKID STEER ATTACHMENTS

NEW BACKHOE ATTACHMENT W/ 12IN. DIGGING BUCKET

NEW 96IN. 4-WAY POWER ANGLE DOZER BLADE

NEW MID STATE 72IN. BUSH HOG

NEW 4000LB CAPACITY FORKLIFT MAST ATTACHMENT W/ HOSES

NEW 1.5 YARD TRASH/ DEBRIS HOPPER

NEW GENTEC 48IN. PALLET FORKS 5000lb capacity.

(2) NEW JBX 4000 48IN. FORKS

NEW 8FT. FORK EXTENSIONS

### TRACTOR ATTACHMENT

UNUSED 3PT PTO HD BACKHOE ATTACHMENT

### 5 TELESCOPIC FORKLIFTS

2014 JCB 535-140 SN:2337616 4x4, diesel engine, EROPS, air, 7,716lb lift capacity, 45ft. Reach height, front stabilizers, forks, low hours.





**2007 SKYTRAK 10054** diesel engine, EROPS, heat, 10,000lb lift capacity, 54ft. Reach height, front stabilizers.



**(2) 2008 SKYTRAK 8042** diesel engine, EROPS, heat, 8,000lb lift capacity, 42ft. Reach height.

**2006 SKYTRAK 8042** diesel engine, EROPS, heat, 8,000lb lift capacity, 42ft. Reach height.

## FORKLIFT

**2008 LINDE LP** engine, OROPS, 4,000lb lift capacity, 16ft. Reach height, sideshift.

## BOOM LIFT



**JLG 400S 4x4**, diesel engine, 40ft. Platform height, straight boom, 500lb lift capacity, new tires.

## 20 SCISSOR LIFTS



**(16) UNUSED JLG 1932R** electric powered, 19ft. Platform height, slide out deck, 500lb lift capacity.

**2005 MEC 2548** electric powered, 25ft. Platform height, slide out deck, 10ft. Platform height, slide out deck, 500lb lift capacity.

**2008 JLG 2030ES** electric powered, 20ft. Platform height, slide out deck, 10ft. Platform height, slide out deck, 500lb lift capacity.

**2008 HYBRID HB1430** electric powered, 10ft. Platform height, slide out deck, 10ft. Platform height, slide out deck, 500lb lift capacity.

**2008 HYBRID HB1030** electric powered, 10ft. Platform height, slide out deck, 10ft. Platform height, slide out deck, 500lb lift capacity.

## 10 LIGHT PLANTS

**(10) 2013 MAGNUM MLT3060** diesel engine, 4-1,000 watt lightbulbs, 6KW, trailer mounted.

## SWEeper

**2005 FREIGHTLINER VN:N/A** diesel engine, power steering, sweeper body, dual wheel single axle.

## 3 SERVICE TRUCKS



**2009 PETERBILT 335 VN:N/A** Cummins diesel engine, power steering, Stellar 10620 service body, 10,000lb crane, air compressor, dual wheel single axle, 229,406 miles. Engine rebuilt in 2016 and transmission replaced in 2017.

**2008 PETERBILT 335 VN:N/A** Cummins diesel engine, automatic transmission, power steering, Stellar 10620 service body, 10,000lb crane, air compressor, dual wheel single, 316,852 miles.

**FORD F450 VN:N/A** diesel engine, power steering, service body, 6000lb crane, air compressor, dual wheel single axle.

## TRUCK TRACTOR

**2009 MACK CXV612 VN: 001459** Mack MP7 diesel engine, Eaton Fuller 10 speed transmission, power steering, 22.5 tires, dual wheel single axle.

## TAGALONG TRAILERS



**2005 CAM 20 TON VN:012774** 20 ton capacity, redecked, tandem axle.



**2001 INTERSTATE 20 TON VN:N/A** 20 ton capacity, tilt deck, air brakes, pintle hitch, tandem axle.

## WATER TRUCK BODIES

**(2) UNUSED MAROTTA MATTEO 3500 GALLON TANK** trapezoid shape, 3-internal baffles, manway, ladder, sight gauge, light bracket w/ LED lights, fender, plumbing kit, six independent air operated valves, cab control console to each valve, water pump 4x3 centrifugal pump 750GPM@75 PSI w/ ceramic seal. SP5 sandbasted & epoxy coating. 5 year manufacture warranty. Register w/ Marotta Tank.

## 7 GOLF CARTS

**(7) 2014 EZ GO TXT48** electric powered, charging station.

## 6 FUEL TANKS

**(5) UNUSED MAROTTA GIULIANA 793 GALLON TANK** 120 volt fuel pump, 3 year manufacture warranty. Register w/ Marotta Tank.

**100 GALLON DIESEL TANK W/ PUMP**

## HEATING EQUIPMENT

**(2) REZNOR NATURAL GAS 250K HANGING HEATER**

## 71 NEW SUPPORT EQUIPMENT

**(8) NEW 7500 WATT GENERATOR** gas engine, 13hp, 7500 watts, electric start, automatic voltage regulator, backup pull-start, hd steel frame with fully isolated motor mounts for quietness, low oil shutoff, (2) 110v, 30amp power outlets, 240V NEMA L14-30R twist-lock outlet, 120V NEMA L5-30R twist-lock outlet, 12V 8.3amp DC outlet, wheel kit. EPA approved emissions.

**(3) NEW MUSTANG LF88 PLATE COMPACTOR**  
**NEW MUSTANG ML80S RAMMER**

**(6) NEW MUSTANG MP4800 2IN. SUB PUMP**

**(4) NEW MUSTANG CV3500 25FT., 800AMP EXTRA HD BOOSTER CABLE**

**(8) NEW MUSTANG CONCRETE VIBRATOR**

**(8) NEW 3PC. 14IN. PREMIUM DIAMOND BLADES**

**(4) NEW HUSKIE B65 ELECTRIC DEMO HAMMER**

**(4) NEW 1/2IN. DRIVE AIR IMPACT WRENCH KIT**

**(2) NEW HUSKIE 11218SDS HAMMER DRILL**

**(3) NEW 25FT. CONVEYOR SET, 16IN. X 8FT. LONG, 3PCS**

**(6) NEW CASE OF 2.5IN. GALVANIZED DECK SCREWS, 2500/CASE**

**(4) NEW 20IN. X 40IN. HEAVY DUTY MOVING DOLLY**

**(4) NEW 4IN. SWIVEL CASTER WHEELS, LOCKABLE, 12/CASE**

**(6) NEW LITHONIA LIGHTING, EMERGENCY LIGHTING WAREHOUSE LIGHT, DUAL LIGHT W/ BATTERY BACK UP**

## 24 SUPPORT EQUIPMENT

**2007 LANTECH 4000LB PALLET WRAPPING MACHINE W/ TURNTABLE**

**2014 GENIE GL-8 MATERIAL LIFT**

**(2) 36 VOLT INDUSTRIAL BATTERY CHARGER**

**(3) COMMERCIAL FLOOR FAN, 1HP, 115 VOLT**

**(4) PALLET RACK, 32FT. LONG RUN, HEAVY DUTY**

**(2) 28IN. X 50IN. EAGLE SPILL CONTAINMENT PALLET**

**(3) (2) EXTINGUISHERS**  
**BANDING CART W/ TOOLS**

**HEAVY DUTY 20 GALLON WET/DRY SHOP VAC**  
**POWERVAC COMMERCIAL/ INDUSTRIAL CAR VAC SYSTEM W/ HOSE, 120 VOLT**

**(2) 10 GALLON DAYTON SHOP COMPRESSOR, 110 VOLT**

**(3) SAFETY HARNESS FOR SCISSOR & BOOM LIFT, FULL BODY**





# America's Auction Company

## HOUSTON, TEXAS - TUESDAY, APRIL 3<sup>RD</sup> AT 11:00 AM

**ADDRESS:** 711 Rankin Road, Houston, Texas 77073. **NOTE:** Selling will be very late model Agricultural & Construction Equipment that is in very good condition. **SALE SITE PHONE:** (817) 209-9731 Ricky. **TEXAS LICENSE:** #15791 Jack Lyon. **TERMS & CONDITIONS:** "Cash or Company Check" accompanied by current "Bank Letter of Guarantee", made payable to Alex Lyon & Son. Everything Sells "AS IS, "WHERE IS." The following charges will apply on all purchases: (1.) For each unit \$25,001.00 and above, a 5.95% administration fee will be assessed when paying with cash or good check. (The standard fee of 8.95% will be assessed when paying with credit card); and (2.) For each unit \$1,001-\$25,000.00, a 10% administration fee will be assessed when paying with cash or good check, and a 13% fee will be assessed when paying with credit card. (3.) For each unit \$0 - \$1,000, a 12.5% administration fee will be assessed when paying with cash or good check, and a 15.5% fee will be assessed when paying with credit card.



**FOR BID ONLINE TECHNICAL ASSISTANCE CALL**  
**Proxibid: (855) 636-6461**  
**Nextlot: (919) 361-1111**

### 14 HYDRAULIC EXCAVATORS

(2) 2014 KOMATSU PC350LC-8 Komatsu diesel engine, Cab, air, heat, stereo, reach boom, digging bucket with teeth, long undercarriage.

2006 KOMATSU PC120-6 SN:2071688 Komatsu diesel engine, Cab, air, heat, 36in. Digging bucket.

(2) HITACHI ZX450LC Isuzu diesel engine, 350hp, Cab, reach boom, 12ft. stick, 36in. pads, 60in. digging bucket, long undercarriage.

(2) HITACHI ZX160 Isuzu diesel engine, 110hp, Cab, reach boom, 10ft. stick, 24in. pads, digging bucket.



2017 KOBELCO SK210LC-9 SN:YQ13T2818 diesel engine, Cab, air, fm stereo, 32in. Pads, 44in. Digging bucket, long undercarriage, 1,755 hours.

2012 TAKEUCHI TB1140 SN:514200720 Isuzu BB-4BG1TRE diesel engine, Cab, air, heat, digging bucket, long undercarriage, 2,478 hours.

2012 JOHN DEERE 85D SN:1FF085DXKD Isuzu 4LE2X diesel engine, Cab, air, front blade, digging bucket, 3,102 hours.



(2) 2016 JOHN DEERE 17G Yanmar diesel engine, OROPS, front blade, auxiliary hydraulics, 9in. Rubber tracks, 12in. Digging bucket, 462 hours.

2013 BOBCAT E26 SN:B33211099 Kubota V1505-E4B diesel engine, OROPS, front blade, rubber tracks, digging bucket, 1,122 hours.

CAT 336DL burnt, parts unit

### 6 CRAWLER TRACTORS



2010 JOHN DEERE 650JLT SN:187960 John Deere diesel engine, OROPS, sweeps, rear screen, Straight blade with tilt, 36in. Pads.

2012 JOHN DEERE 450JLGP SN:CCD227186 John Deere diesel engine, OROPS, 6 way blade, wide pads, 1,978 hours.



2008 CAT D6TLGP SN:KJL00833 Cat diesel engine, OROPS, sweeps, rear screen, Straight blade with tilt blade, 36in. Pads.

(2) 2014 KOMATSU D61PX-23 Komatsu diesel engine, EROPS, air, heat, engine enclosures, fm stereo, 6 way blade.

2013 KOMATSU D51EX SN B12787 Komatsu diesel engine, EROPS, air, heat, 6 way blade.

### RUBBER TIRED LOADER

2011 KOMATSU WA320-7 SN:70990 Komatsu diesel engine, EROPS, air, heat, stereo, quick coupler, GP bucket.

### TRACTOR LOADER BACKHOE

2011 CAT 416E SN:LMS01173 4x4, Cat diesel engine, EROPS, air, heat, GP front bucket, 24in. Rear digging bucket with teeth.

### 5 PULLING TRACTORS

2010 JOHN DEERE 9630 SN:E003596 4x4, John Deere diesel engine, 530hp, EROPS, air, heat, fm stereo, 18 speed powershift transmission, differential lock, front counterweight, hydraulic remotes, 710/70R42 dual ties.

(4) 2006 VOLVO T450D 4x4, Volvo D12D diesel engine, 419hp, EROPS, air, E-Ject scraper hitch, 29.5R25 rubber.

### 13 PULL SCRAPERS

(7) 2008 E-JECT SC-17-U 17 yard 44,000lb capacity, 10ft. 5in. width cut, 29.5R25 rubber.

2007 E-JECT SC-17-U SN:381P 17 yard 44,000lb capacity, 10ft. 5in. width cut, 29.5R25 rubber.

(3) 2006 E-JECT SC-17-U 17 yard 44,000lb capacity, 10ft. 5in. width cut, 29.5R25 rubber.



(2) 2008 JOHN DEERE 1812 18 yard capacity, 24ft. Long, 13ft. Wide, couplers, hoses, 17.5 x 25 rubber.

### ARTICULATED HAUL TRUCK

CAT D350D SN:9RF00542 6x6, Cat diesel engine, EROPS, 35 ton capacity, 26.5R25 rubber.

### CRAWLER CRANE

AMERICAN 5299 SN: GS10668 diesel engine, Cab, 50 ton lift capacity, 100ft. main boom, 36in. pads, block and ball, 3,852 hours. Updated certification.

### CARRY DECK CRANE

2008 BRODERSON IC803G SN:595846 GM 3.0 EFI, 18,000lb lift capacity, hydraulic outriggers.

### 4 SKID STEERS

(4) 2015 CAT 262D Cat C3.3B DIT diesel engine, EROPS, air, heat, 2-speed, auxiliary hydraulics, hydraulic quick coupler, 72in. GP bucket with cutting edge, low hours.

### 17 SKID STEER ATTACHMENTS

NEW LOWE 750 HYDRAULIC AUGER W/ 15IN., 12IN., AND 9IN. BITS  
 NEW LOWE 750 HYDRAULIC AUGER W/ 12IN. BIT  
 NEW STOUT XHD84-6 BRUSH GRAPPLE  
 NEW STOUT HD72-3 ROCK/ GRAPPLE BUCKET COMBO  
 NEW STOUT HD-72 BRUSH GRAPPLE  
 (2) NEW 2 CUBIC YARD TRASH HOPPER  
 (3) UNUSED 94IN. HYDRAULIC DOZER BLADE  
 MID STATE 48IN. FORK SET  
 (2) NEW JBX 4000  
 (4) NEW ATTACH FRAME

### ROUGH TERRAIN FORKLIFT

2008 HARLO HP6500 SN:100850 diesel engine, OROPS, 6,500lb lift capacity.

### TELESCOPIC FORKLIFT

2004 TEREX TC55-19 SN:10273 4x4, diesel engine, OROPS, 5,500lb lift capacity, 19ft. Reach height.



## 4 FORKLIFTS



**2012 HELI CPYD25-TY5** SN:23025P5227 Vortec LP engine, 46.3hp, OROPS, 5,500lb lift capacity, 9ft. 8in. Reach height, 42in. Forks, 44in. Frame, 7.00 x 12 front tires, 6.00 x 9 rear tires.



**2011 DOOSAN G25E-5** SN:772 gas engine, OROPS, 4,600lb lift capacity, 7ft. Reach height, 42in. Forks, 45in. Frame, 7.00 x 15 front tires, 6.50 x 10 rear tires.

**2006 MITSUBISHI FG25LP** SN:5715 LP engine, OROPS, 5,000lb lift capacity, 14ft. Reach height, 5ft. Forks, 3,400 hours.

**2011 DOOSAN L20** SN:3404 LP engine.

## 4 FORKLIFT ATTACHMENTS

(2) UNUSED 72IN. FORK EXTENSION

(2) 72IN. FORK EXTENSION

## BOOM LIFT



**2008 JLG 800AJ** SN:300130571 4x4, Deutz diesel engine, 80ft. Platform height, straight boom, JIB, 500lb lift capacity, 445/55D19.5 foam filled tires.

## 6 AIR COMPRESSORS

**2012 DOOSAN HP750WCU** SN:436075UBWE48 Cummins diesel engine, 750CFM, trailer mounted.

**2011 INGERSOLL RAND HP750WCU** SN:722380UVBV76 Cummins diesel engine, 750CFM, trailer mounted.

**2010 SULLAIR 375DPQ** SN:201008240054 diesel engine, 375CFM, trailer mounted.

**2010 SULLAIR 375HDPQ** SN:201008260191 diesel engine, 375CFM, trailer mounted.

**2008 QUINCY QSI750 ROTARY** SN:BU0810140153 electric powered, 750CFM.

**2005 QUINCY QSI750 ROTARY** SN:UN058692 electric powered, 750CFM.

## 6 GENERATORS

(3) **2013 HIMOINSA HRJW-205** diesel engine, 205KVA, 160KW, trailer mounted.

(3) **CUMMINS** Cummins diesel engine, skid mounted.

## 15 WELDERS

(2) **2010 MILLER ELECTRIC MARK VIII-2 MULTIPLE OPERATOR WELDING SYSTEM** Each module offers up to 300 amps output, 230/460/575 V, 60 Hz, can handle Stick, DC-TIG welding, and wire welding (FCAW and MIG) with a voltage-sensing feeder.

(3) **2009 MILLER ELECTRIC MARK VIII-2 MULTIPLE OPERATOR WELDING SYSTEM** Each module offers up to 300 amps output, 230/460/575 V, 60 Hz, can handle Stick, DC-TIG welding, and wire welding (FCAW and MIG) with a voltage-sensing feeder.

(5) **2008 MILLER ELECTRIC MARK VIII-2 MULTIPLE OPERATOR WELDING SYSTEM** Each module offers up to 300 amps output, 230/460/575 V, 60 Hz, can handle Stick, DC-TIG welding, and wire welding (FCAW and MIG) with a voltage-sensing feeder.

(3) **2007 MILLER ELECTRIC MARK VIII-2 MULTIPLE OPERATOR WELDING SYSTEM** Each module offers up to 300 amps output, 230/460/575 V, 60 Hz, can handle Stick, DC-TIG welding, and wire welding (FCAW and MIG) with a voltage-sensing feeder.

**MILLER ELECTRIC MARK VIII-2 MULTIPLE OPERATOR WELDING SYSTEM** Each module offers up to 300 amps output, 230/460/575 V, 60 Hz, can handle Stick, DC-TIG welding, and wire welding (FCAW and MIG) with a voltage-sensing feeder.

**MILLER ELECTRIC MARK VIII MULTIPLE OPERATOR WELDING SYSTEM** SN:KJ275895 Each module offers up to 300 amps output, 230/460/575 V, 60 Hz, can handle Stick, DC-TIG welding, and wire welding (FCAW and MIG) with a voltage-sensing feeder.

## AGRICULTURAL TRACTORS



**2016 JOHN DEERE 5065E** SN:245678 4x4, John Deere diesel engine, EROPS, air, front loader with 74in. GP bucket, 3pt hitch, PTO, 9.5 x 24 front tires, 16.9 x 28 rear tires.



**JOHN DEERE 4230H** SN:021291R EROPS, air, heat, 10.00 x 16SL front tires, 18x4x34 rear tires.

## 4 TRACTOR ATTACHMENTS

UNUSED 80IN. 3PT PTO HD ROTARY TILLER

(2) UNUSED 3PT PTO HD WOOD CHIPPER

UNUSED 3PT PTO HD BACKHOE ATTACHMENT

## WATER TRUCK

**2000 FORD F750** VN:A37539 International 7.3L diesel engine, 5 speed transmission, power steering, 2000 gallon water tank, 11R22.5 tires, dual wheel single axle.

## DUMP TRUCK

**2007 MACK CV713** Mack 427 diesel engine, Mack transmission, power steering, Ox steel dump body, roll tarp, air lift axle, triaxle.

## TRUCK TRACTOR

**1990 WHITE GMC VN:634669** diesel engine, power steering, dual wheel single axle.

## PICKUP TRUCK

**2004 FORD F150 VN:B35355** gas engine, power steering.

## SPORT UTILITY VEHICLE

**1995 LAND ROVER DISCOVERY VN:659279** 4x4, gas engine, winch.

## 3 DETACHABLE GOOSENECK TRAILERS

(3) **NEW 2018 WITZCO RG50** 50 ton capacity, tri-axle, 8ft. 6in. wide, level deck style, 48ft. long, level deck style, ground bearing, 2 angle scraper with self-contained hydraulic system, 22ft. load deck, tapered front beam, 2in. lumber decking, (24) 12in. outriggers, 3 D-rings per side of deck, Hutch 9700 spring suspension, 16.5in. x 7in. air brakes, unimount wheels with 255x22.5 radial tires, modular wire harness, rubber mounted sealed. FET APPLIES.

## 4 STORAGE BUILDINGS

UNUSED 30FT. X 65FT. X 17FT. PEAK CEILING

UNUSED 30FT. X 40FT. X 15FT. PEAK CEILING

UNUSED 20FT. X 30FT. X 12FT. PEAK CEILING

STORAGE SHELTER

10FT. X 20FT. GREEN HOUSE

## 6 SCRAP RECYCLING EQUIPMENT

(2) **NEW 2 YARD STACKABLE SELF DUMPING**

HOPPER 4,000lb capacity.

(2) **NEW 1.5 YARD STACKABLE SELF DUMPING**

HOPPER 4,000lb capacity.

(2) **NEW 1 YARD STACKABLE SELF DUMPING**

HOPPER 4,000lb capacity.

## HEATING EQUIPMENT

**NEW HEAT STAR HS170FAVT** 150K BTU HEATER

SN:017465

## 79 NEW SUPPORT EQUIPMENT

(9) **7500 WATT GENERATOR** gas engine, 13hp, 7500 watts, electric start, automatic voltage regulator, backup pull-start, hd steel frame with fully isolated motor mounts for quietness, low oil shutoff, (2) 110v, 30amp power outlets, 240V NEMA L14-30R

(3) **NEW MUSTANG LF88**

**NEW MUSTANG ML80S**

(6) **NEW MUSTANG MP4800**

**MUSTANG MP4800 2IN. SUBMERSIBLE PUMP**

(4) **NEW MUSTANG CV3500**

(8) **NEW 3 PC. 14IN. PREMIUM DIAMOND BLADES**

(8) **NEW NEW AUTO DARKENING WELDING HELMET**

(4) **NEW HUSKIE B65**

(2) **NEW HUSKIE 11218SDS**

(4) **NEW 2IN. X 50FT. DISCHARGE WATER HOSE**

1/2IN. DRIVE AIR IMPACT WRENCH KIT

(6) **3PC 14IN. PREMIUM DIAMOND BLADES**

UNUSED HD TIRE CHANGER

UNUSED HD WHEEL BALANCER

UNUSED 8800LB HD TWO POST AUTO LIFT (BOX A & B)

(2) **UNUSED 10FT. 20-DRAWER HD METAL WORK BENCH**

(4) **NEW 29.5IN. X 90IN. HEAVY DUTY WORK**

BENCH W/ SHELF

(4) **NEW 30IN. X 57IN. WELDING TABLE**

(2) **NEW AR500 DUELING TREE SHOOTING TARGET**

FOR .22 CAL

(2) **NEW 3/8IN. AR500 DUELING TREE SHOOTING**

TARGET

(2) **NEW 3/8IN. AR500 GONG TARGET**

(2) **NEW 30IN. X 90IN. CATTLE & CALF FEEDER**

UNUSED 20FT. HD BI-PARTING WROUGHT IRON

DRIVEWAY GATE





# AUCTION CALENDAR

ALL THE FOLLOWING AUCTIONS WILL BE AVAILABLE TO



1. Saturday, March 17: **LAS VEGAS, NEVADA:** Late Model Rental Fleet Equipment, Telescopes, 100 Booms, 225 Scissors, All Types Late Model Construction Equipment, Trucks, Trailers, Attachments & Support Equipment.

2. Saturday, March 24: **MONTREAL, QUEBEC, CANADA:** Complete Liquidation. Concrete Equipment, Concrete Tooling, Shop Equipment, Support, Large Quantity Scaffolding, (2) Gomaco Commander, Pickup and Service Trucks.

3. Monday, March 26: **TORONTO, CANADA:** Late Model Agricultural & Construction Equipment Auction. Late Model Ag Tractors, Tillage, Hay, Harvesting Equipment, Air Compressors, Welders, Generators, Light Plants, Hydraulic Excavators, Skid Steers, Utility Tractors, Crawler Tractors, Tractor Loader Backhoes, Attachments, Support Equipment.

4. Thursday, March 29: **BLANKET, TEXAS:** Major Job Completion. Large Earthmoving Equipment, Truck Tractors, Equipment Trailers, Support, Attachments and Tools. **HIGHLIGHTS:** (2) Euclid R100, (2) Euclid R35, Cat D11N, (2) Cat D9H, (2) Cat D9G, Cat 375LME, Cat 16G, Cat 973, (2) Cat 637D, (7) Cat 630, (2) Cat 630B Water Wagons.

5. Friday, March 30: **MIDDLETOWN, NEW YORK:** Late Model Cat, Komatsu, John Deere, Construction & Utility Equipment, Attachments, Tools, Dump Trucks, Trailers, (3) Komatsu Aggregate Crushers.

6. Tuesday, April 3: **HOUSTON, TEXAS:** Rentals, Rentals, Rentals. Late Model Construction Equipment, Aerials, Forklifts, Attachments, Support, Trailers, Trucks. **SPECIAL:** (11) Eject Pull-Behind Scrapers, (4) Volvo T450 Pulling Agricultural Tractors, (2) Hitachi ZX450LC, (2) Hitachi ZX160LC, 2007 Mack CV713 Dump Truck, (3) Cummins DGCA Generators.

7-9. Thursday, April 5, Friday, April 6, Saturday, April 7: **ATLANTIC CITY, NEW JERSEY:** Annual 3-Day Late Model Rental Return Auction. Cat, Komatsu, John Deere, Doosan, Kubota, Bobcat Earthmoving Equipment, (80+) Late Model Hydraulic Excavators, Cranes, Aerial Lifts, Forklifts, Attachments, Support Equipment, Dump Trucks, Truck Tractors, Pickups, Dump Trailers, Tagalongs.

10. Thursday, April 12: **PARKERSBURG, WEST VIRGINIA:** Very Late Model Rental Fleet Cat, Komatsu, John Deere Construction Equipment, 2012 Cat D9T, 2012 Cat D8T, Forklifts, Dump Trucks, Truck Tractors, All Types of Trailers. **HIGHLIGHTS:** 2012 Volvo A25F, 2015 JD D250D-II, 2014 JD 850KLG, (2) 2013 Cat D6NLP(winch), 2015-2014 Cat Cat D6KLG, 2015 Cat D5KLG-II, (2) 2015 Cat D5KXL-II, 2014 Cat D4KXL-II, (2) 2018 Genie GTH2506.

11. Friday, April 13: **WESTFIELD, PENNSYLVANIA:** Retirement Auction. Very Late Model Cat Construction Equipment, Heavy Duty Truck Tractors, Dump Trucks, Service Trucks, Pickups, Attachments, Support Equipment for the Oil & Gas Contractors. **HIGHLIGHTS:** Cat 336EL, 2012 Cat 319DNL, Cat 318CLN, Cat 314DLR, (2) Cat 308E2, Cat D6NXL, Cat 561, 2015 Cat 930K, 2016 Cat 926M, 2015 Cat 924K, Cat 420EIT, 2007 Peterbilt(tri.) Truck Tractor, Detachables.

12. Saturday, April 14: **RACINE, WISCONSIN:** Late Model Cat Construction Equipment, Aerial Lifts, Forklifts, Skid Steers, Large Quantity of Truck Tractors, Quad Axle Dump Trucks, Pickups, Attachments, Support.

13. Thursday, April 19: **PONTIAC, MICHIGAN:** Major Job Completion of Late Model(clean) Cat, Komatsu, Volvo, Hamm Construction Equipment, Attachments, Water Trucks, Dump Trucks, Service & Pickups, Trailers and much more. **HIGHLIGHTS INCLUDE:** 2015 Cat 930K, (2) 2016 Cat 926M, (3) 2015 Cat 924K, JD 524K, Cat 289C, (2) 2015 Cat 272D, (6) 2016-2015 Cat 262D, Cat 143H, 2012-2007 Cat D6KLG, (2) Cat D6NLP, (2) Cat D5GLP, Cat D4G, Cat D3GLP, Cat 416E(4x4), Cat CB54XW, (2) Cat 320CL, Cat 314C, Volvo EW200B, (2) Komatsu PC300LC, Gomaco Commander III, (2) Hamm 341.

14. Friday, April 20: **N. ATTLEBORO, MASSACHUSETTS:** One of the Greatest Cat sales of all time (125+) 2018-2017 Units all with 250-hours or less. **HIGHLIGHTS:** (40) 2018-2017 Cat 926M, (40) 2018-2017 Cat 906M, (25) Cat 289DXPS, Cat 259DXPS, (2018-2017) Cat 246DXPS, (10) Cat Hydraulic Excavators, Cat 320E, Cat 312E, (2) Cat 308E, (2) Cat 305E, (2018-2014) (2) Cat Vibratory Rollers, (10) Ford F150 Pickups(w/snow plows), Plus Snow Plows, Spreaders, Sanders and more.

15. Saturday, April 21: **COLUMBUS (DELAWARE) OHIO:** Late Model Rental Returns. John Deere, Cat, Hitachi, Komatsu Construction Equipment, Attachments, Accessories, Trucks & Trailers. (20+) Excavators: 2017 Kobelco SK210LC, (2) 2013 Hitachi ZX350, 2013 JD 350GLC, 2013 JD 250GLC, 2014 Doosan DX225LC-3, (2) 2014 JD 644K, (2) 2015-2011 JD 624K, 2017 Case 521F, 2015 Cat 930K, 2016 Cat 926M, (2) 2015 Cat 924K, (15) Skid Steers.

16. Tuesday, April 24: **MONTREAL, QUEBEC, CANADA:** Complete Liquidation. Late Model Well-Maintained Construction Equipment, Trucks, Trailers, Pickups, Support and Shop Equipment.

**HIGHLIGHTS:** 2015 Komatsu 320, Cat 950H, (3) Komatsu PC400, 2014 Komatsu PC138UUS, Cat 320DL, Cat 308E, Cat D6RLGP, 2012 Cat D6KLG, Cat D4GLP, 2013 Cat 430FIT, (2) 2017 Kobelco SK350LC.

17. Thursday, April 26: **MONCK'S CORNER, SOUTH CAROLINA:** All types of Late Model Construction Equipment, Trucks, Attachments, Support Equipment and Tools.

18. Friday, April 27: **MANASSAS, VIRGINIA:** Rental Fleet Auction. Construction, Utility Equipment, Dump Trucks, Truck Tractors, Service & Pickup Trucks, Attachments, Support Equipment, (8) Dump Trucks, 2006-(3) 2004 Kenworth, (3) 2004 Mack, Cat 926M, 2015 Cat 924K, (6) Cat Skid Steers, (10) Light Plants.

19. Saturday, April 28: **FAYETTEVILLE:** Rental Return Auction. Very Late Model Rental Returns of Construction Equipment, Aerial Lifts, Telescopic Forklifts, Hydraulic Excavators, Skid Steers, Large Quantity of Agricultural Tractors, Farm Equipment, Compact Tractors, Lawn & Garden Tractors, Motorcycles, Four-Wheelers and Much, Much More.

20. Thursday, May 3: **SPARTANBURG, SOUTH CAROLINA:** Late Model Construction Equipment, Trucks & Trailers, Plus Final Phase of Large Quantity of Cat, Komatsu Salvage Machines and Attachments.

21. Friday, May 4: **BUFFALO, NEW YORK:** Retirement Auction. Complete Liquidation. One of the most respected names in Western New York. Primarily Cat Construction Equipment, Mack Trucks (very well-maintained). Primarily Cat, Komatsu Equipment, Paving Equipment.

22. Saturday, May 5: **DANVILLE (ROCHESTER), NEW YORK:** Large Municipal Auction. Late Model Cat, Komatsu, John Deere Rubber Tired Loaders, Tractor Loader Backhoes, 2015 JD 310L(4x4), Crawler Tractors. **EARLY HIGHLIGHTS:** 2017 Cat 930M, 2016 Cat 926M, (2) 2014 Cat 924M, (2) 2016 JD 644K, (2) 2016 JD 624K, (2) 2017 JD 624K, JD 544K, (2) 2017 Cat 312E, (2) 2017 Cat 308E, Cat 272D, (4) Cat 262D, (2) 2017 Case SV280.

23. Tuesday, May 8: **CHICAGO, ILLINOIS:** 2 Auctions in 1 Day. Retirement Auction & Bankruptcy Auction. **HIGHLIGHTS INCLUDE:** Tow Trucks & Towing Equipment, Asphalt Equipment, All Types of Construction Equipment, Aerial Lifts, Forklifts, Truck Tractors, Dump Trucks.

24-25. Wednesday, May 9 & Thursday, May 10: **CHICAGO, ILLINOIS:** 2-Day Retirement Auction. Later Model Construction & Demolition Equipment, Attachments, Cranes, Support, All Types of Trucks, Trailers(Very Good Condition).

26. Saturday, May 12: **ALBANY, NEW YORK:** Very Large 3-Company Job Completion Auction. Construction, Aggregate, Aerial Lifts, Dump Trucks, Truck Tractors, Pickups, Attachments, Support Equipment.

27. Friday, May 18: **SACRAMENTO, CALIFORNIA:** Late Model Cat, Komatsu Construction Equipment, Attachments, Support Equipment.

28. Friday, May 19: **RAYNHAM, MASSACHUSETTS:** Late Model Cat & Komatsu Construction Equipment, Dump Trucks, Dump Trailers, Truck Tractors, Attachments.

29. Sunday, May 20: **CANASTOTA (SYRACUSE), NEW YORK:** Annual Landscape & Lawn & Garden, Lawn Mowers, Midi & Mini Construction Equipment, Skid Steers, Attachments, Support Equipment.

30. Tuesday, May 22: **ORLANDO (KISSIMMEE), FLORIDA:** Large Rental Return Auction. **HILITES:** Construction Equipment, Forklifts, Aerial Lifts, Attachments, Support, Trucks, Trailers, Tagalons and more.

31. Friday, May 25: **AUBURN, MAINE:** Cat, Komatsu, John Deere Rental Fleet Construction Equipment, Attachments, Support, Trucks, Trailers.

32. Saturday, June 2: **CLEVELAND, OHIO:** Construction, Aggregate, Recycling Equipment, Trucks, Trailers, Large Quantity Support and Attachments.

33. DTBA: **LONG ISLAND, NEW YORK:** Rentals, Rentals. Cat, Komatsu, Earthmoving Equipment, Skid Steers, Aerial Lifts, Truck Tractors, Dump Trucks, Large Quantity Support.

34. DTBA: **SAN DIEGO, CALIFORNIA:** Cat, John Deere, Komatsu, Volvo, IR Construction Equipment, Asphalt & Vibratory Rollers, Aerial Lifts, Trucks and Trailers.



## MAIN OFFICE

315.633.2944 • 315.633.2872 • 315.633.9544  
EVENINGS: (315) 637-8912, FAX: (315) 633-8010

## BRANCH OFFICES

ATLANTA, GA	770.537.7386	NASHVILLE, TN	615.922.5197
BRATTLEBORO, VT	802.490.7894	NEW LONDON, CT	860.924.7735
CHICAGO, IL	312.724.5474	OKLAHOMA CITY, OK	405.438.3188
COLUMBUS, OH	614.254.5596	PARKERSBURG, WV	304.699.3050
DALLAS, TX	972.725.7761	PROVIDENCE, RI	401.258.4850
DENVER, CO	515.414.2868	RACINE, WI	262.886.2778
DES MOINES, IA	720.277.0263	ST. LOUIS, MO	314.570.4127
FORT WORTH, TX	817.807.2761	TAMPA, FL	813.777.3273
HARRISBURG, PA	717.836.0919	WASHINGTON, DC	202.888.6003
HOUSTON, TX	832.450.3910	MONTREAL, CA	514.949.7500
LAS VEGAS, NV	702.475.4992	OTTAWA, ON	514.916.4656
MOBILE, AL	251.510.1538		

FOLLOW US:   

Warranties Available On Late Model Equipment from:



CONTACT: Christine Julka  
DIRECT: 315-256-0498  
OFFICE: 866-662-0995  
www.adiagency.com

FINANCING AVAILABLE FOR PRE-APPROVED PURCHASERS: You must have prior written approval!

**SMART BUSINESS CREDIT & LEASING:** For instant credit approvals, contact Customer Service at 800.798.6862, or visit our on-site trailer at select auctions. Also available is a secure online application: www.Smartbusinesscredit.com 100% financing or leasing & customized financial packages available (\$10,000 minimum).

**SALES TAX:** All sales are subject to sales tax.

**SALES TAX EXEMPTIONS:** Buyers with a VALID exemption certificate are not required to pay sales tax for equipment and miscellaneous, but MUST present a copy of their certificate at time of registration at EACH SALE.

**EXPORTERS:** If you take possession of your purchase in the United States, you must pay sales tax. You must provide the following in order not to be charged: Bill of Lading - All export purchases must be removed by a trucking company. The trucking company will provide a Bill of Lading with the purchases listed.

**NOTE:** No items will be released without this document or you may pay tax and be reimbursed once the Bill of Lading or a Dock Receipt is received.

**MOTOR VEHICLES AND TRAILER EXEMPTIONS:** Specific for each state. Please call office for exemption details.



7697 ROUTE 31, PO BOX 610  
BRIDGEPORT, NY 13030

ADDRESS SERVICE REQUESTED

PRESORT  
FIRST CLASS  
U.S. POSTAGE  
PAID  
ROCHESTER, NY  
PERMIT No. 944

All information contained in this brochure was derived from sources believed to be correct, but not guaranteed. We shall not be held liable for any typographical errors or inaccuracies in the content of this brochure. All announcements made day of sale supersede any printed material.



PLEASE SCAN  
QR CODE  
FOR UP-TO-DATE  
CALENDAR AND  
EQUIPMENT LISTS

**ANJOU (MONTREAL),  
QUEBEC, CANADA  
SATURDAY, MARCH 24<sup>TH</sup>  
AT 9:30 AM**

**COMPLETE  
LIQUIDATION  
DAY 1**

**EXCAVATIONS  
GILBERT  
THEORET INC.**

**LATE MODEL  
CONSTRUCTION, UTILITY,  
AND AGRICULTURAL  
EQUIPMENT, TRUCKS,  
TRAILERS, SUPPORT**



**WOODSTOCK, ONTARIO,  
CANADA  
MONDAY, MARCH 26<sup>TH</sup>  
AT 9:00 AM**

**LATE MODEL  
AGRICULTURAL  
& CONSTRUCTION  
EQUIPMENT  
AUCTION**

**LATE MODEL AG TRACTORS,  
TILLAGE, HAY, HARVESTING  
EQUIPMENT, AIR  
COMPRESSORS, WELDERS,  
GENERATORS, LIGHT PLANTS,  
HYDRAULIC EXCAVATORS,  
SKID STEERS, UTILITY  
TRACTORS, CRAWLER  
TRACTORS, TRACTOR LOADER  
BACKHOES, ATTACHMENTS,  
SUPPORT EQUIPMENT**

**Bryan's**  
AUCTION SERVICES LTD.

**SUNRISE**  
EQUIPMENT AUCTIONS INC.

**BLANKET, TEXAS  
THURSDAY, MARCH 29<sup>TH</sup>  
AT 11:00 AM**

**MAJOR JOB  
COMPLETION  
AUCTION  
PRATER EQUIPMENT  
COMPANY INC.**

**LARGE EARTHMOVING  
EQUIPMENT, TRUCK TRACTORS,  
EQUIPMENT TRAILERS, SUPPORT,  
ATTACHMENTS AND TOOLS**



**MIDDLETOWN, NEW YORK  
FRIDAY, MARCH 30<sup>TH</sup>  
AT 9:30 AM**

**LATE MODEL  
RENTAL FLEET  
CONSTRUCTION  
EQUIPMENT & TRUCK  
AUCTION**

**LATE MODEL CAT, KOMATSU,  
JOHN DEERE CONSTRUCTION &  
UTILITY EQUIPMENT,  
ATTACHMENTS, TOOLS, DUMP  
TRUCKS, TRAILERS**



Pine Bush Equipment Co., Inc.  
East PBE, Inc.



**HOUSTON, TEXAS  
TUESDAY, APRIL 3<sup>RD</sup>  
AT 11:00 AM**

**RENTALS,  
RENTALS,  
RENTALS**

**LATE MODEL CONSTRUCTION,  
AGRICULTURAL EQUIPMENT,  
AERIALS, FORKLIFTS,  
ATTACHMENTS, SUPPORT,  
TRAILERS, TRUCKS**



315.633.2944

lyonauction.com

lyonauctionlive.com

lyonmexico.com