



SALES MANAGERS & AUCTIONEERS

**BIG ENOUGH FOR
THE INDUSTRY LEADERS,
YET PERSONAL ENOUGH
FOR AMERICA'S FARMER.**

**AMERICA'S
AUCTION COMPANY**

SCRANTON, PENNSYLVANIA - FRIDAY, DECEMBER 14TH AT 9:30 AM

RETIREMENT AUCTION - ROBERT BOLUS



TRUCK TRACTORS, ROLLBACKS, WRECKER TRUCKS, 100+ VAN TRAILERS
(53', 48', 45'), LARGE QUANTITY OF NEW MACK AND PETERBILT PARTS,
CONSTRUCTION EQUIPMENT & REAL ESTATE



ATLANTIC CITY, NEW JERSEY (AC RACE TRACK) - SAT., DEC. 15TH AT 9:00 AM

**VERY LARGE RENTAL CONSTRUCTION
EQUIPMENT AUCTION**

HercRentals™



AHERN RENTALS

AERIAL LIFTS, FORKLIFTS, CRANES, HYDRAULIC
EXCAVATORS, CRAWLER TRACTORS, TRACTOR LOADER
BACKHOES, EQUIPMENT TRAILERS, TRUCK TRACTORS,
DUMP TRUCKS, PICKUPS & SERVICE
TRUCKS, ATTACHMENTS
& SUPPORT



ALEX LYON & SON SALES MANAGERS & AUCTIONEERS, INC.

2018

7697 ROUTE 31, PO BOX 610, BRIDGEPORT, NY 13030 315-633-2944 FAX: 315-633-8010 LYONAUCTION.COM

AMERICA'S AUCTION COMPANY

SCRANTON, PENNSYLVANIA - FRIDAY, DECEMBER 14TH AT 9:30 AM

ADDRESS: 20 Freeport Road, Pittston, PA 18640 (behind the Pittston Volunteer Fire Dept). **NOTE:** Bob Bolus, being in business all of his life is finally going to slow down and head south and enjoy his retirement. **SALE SITE PHONE:** (315) 633-2944. **PA AUCTIONEER:** AY000220L. **PA LICENSE:** AU003051E. **TERMS & CONDITIONS:** "Cash or Company Check" accompanied by current "Bank Letter of Guarantee", made payable to Alex Lyon & Son. Everything Sells "AS IS, WHERE IS." *The following charges will apply on all purchases:* (1.) For each unit \$25,001.00 and above, a 5.95% administration fee will be assessed when paying with cash or good check. (The standard fee of 8.95% will be assessed when paying with credit card). (2.) For each unit \$1,001- \$25,000, a 10% administration fee will be assessed when paying with cash or good check, and a 13% fee will be assessed when paying with credit card. (3.) For each unit \$0- \$1,000, a 12.5% administration fee will be assessed when paying with cash or good check, and a 15.5% fee will be assessed when paying with credit card.



FOR BID ONLINE TECHNICAL ASSISTANCE CALL
Proxibid: (855) 636-6461
Nextlot: (919) 361-1111

4 WRECKER



2008 PETERBILT 389 (TOW) TRUCK VN:751256 Cat diesel engine, 600hp, 18 Speed transmission, power steering, Unibilt 36in. sleeper, Century 9055 body with 3 stage boom, air ride suspension, polished aluminum wheels, 11R24.5 F&R tires, 295/75R22.5 pusher tires, wheel scoops, tandem axle, 7,307 miles. Sells to Owner's Confirmation.



2007 PETERBILT 379 (TOW) TRUCK VN:649171 Cummins ISX Signature 600 diesel engine, Road Range 10 speed transmission, power steering, 2012 Century body with 35 ton boom, 12K fronts, 38K rears, polished aluminum wheels, 11R22.5 F tires, 11R24.5 rear tires, wheel scoops, tandem axle, 217,255 miles. Sells to Owner's Confirmation.



2006 PETERBILT 379 (TOW) TRUCK VN:644230 Cummins ISX Signature 600 diesel engine, 18 speed transmission, power steering, New Century body with 35 ton boom, extended wheel lift, 12K fronts, 38K rears, air ride suspension, polished aluminum wheels, 285/ 75R24.5 tires, wheel scoops, tandem axle, 315,124 miles. Sells to Owner's Confirmation.

2007 KENWORTH W900 (TOW) TRUCK VN:166449 powered Cat diesel engine, 600hp, 18 speed transmission, power steering, 80in. Studio sleeper, Century body, 52K GVWR, spring suspension, polished aluminum wheels, 11R22.5 tires, wheel scoops, 122,480 miles. Sells to Owner's Confirmation.

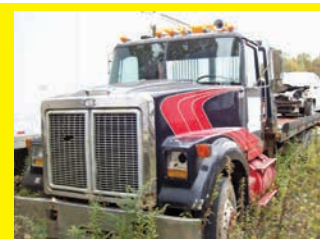
3 ROLLBACK TRUCKS



2005 GMC C6500 VN:522826 Duramax diesel engine, automatic transmission, power steering, Chevron Series 10 aluminum carrier, 10000# rating, Ramsey winch, rear stinger, 7K fronts, 13.5K rears, 225/70R19.5 tires, dual wheel single axle.



WHITE/GMC BRIGADIER VN:700689 Cat 3208T diesel engine, Spicer CM6052C transmission, power steering, 24ft. Steel body, 12K fronts, 21K rears, 11.00R20 tires, dual wheel single axle.



1979 AUTOCAR VN:036130 Cat 3406 diesel engine, Road Ranger RT1110 transmission, power steering, 26ft. Steel body w/ Braden winch, 12K fronts, 38K rears, polished aluminum wheels, 11R22.5 tires, tandem axle.

19 TRUCK TRACTORS

2009 VOLVO VNM VN:283803 Volvo D13 diesel engine, 335hp, Fuller TX-14607B transmission, power steering, 275/80R22.5 tires, dual wheel single axle. Parts.

2009 VOLVO VNM VN:283952 Volvo D13 diesel engine, 335hp, Fuller TX-14607B transmission, power steering, 275/80R22.5 tires, dual wheel single axle. Parts.

2009 VOLVO VNM VN:264033 Volvo D13 diesel engine, 335hp, Fuller TX-14607B transmission, power steering, 275/80R22.5 tires, dual wheel single axle. Parts.



2008 VOLVO VNL VN:265964 Cummins ISX diesel engine, 425hp, Road Ranger 10 speed transmission, power steering, 40K rears, 60in. sleeper, polished aluminum wheels, 11R22.5 tires, tandem axle.



2002 VOLVO VNM VN:341818 Detroit Series 60 diesel engine, 370hp, Road Ranger RT-14609A transmission, power steering, 295/75R22.5 tires, dual wheel single axle.

2002 VOLVO VNM VN:325786 Detroit Series 60 diesel engine, 370hp, Road Ranger RT-14609A transmission, power steering, 295/75R22.5 tires, dual wheel single axle.





2000 VOLVO VNM VN:234527 Cummins N14 diesel engine, 370hp, Fuller RT-14609A transmission, power steering, sliding 5th wheel, 295/75R22.5 tires, dual wheel single axle.



1998 VOLVO NR64 VN:860898 Detroit Series 60 diesel engine, Fuller T-14607A transmission, power steering, 275/80R22.5 tires.



1998 VOLVO NR64 VN:860932 Detroit Series 60 diesel engine, Fuller T-14607A transmission, power steering, 275/80R22.5 tires.



2005 MACK CV713 VN:025419 Mack AMI-335 diesel engine, Maxitorque 10 speed multi-speed reverse transmission, 50K rears, DCF, camelback spring suspension, sliding 5th wheel, Dickerson recovery body with Braden winch, polished aluminum wheels, 385/65R22.5 F tires, 11R22.5 R tires, tandem axle, 194,500 miles.



2001 INTERNATIONAL 9200I VN:001849 Cummins diesel engine, 7 speed transmission, power steering, 40K rears, spring suspension, 295/75R22.5 tires, tandem axle.



1997 INTERNATIONAL 9200 VN:028639 Cummins M11 diesel engine, Fuller 7 speed transmission, power steering, 295/75R22.5 tires, dual wheel single axle.

1997 INTERNATIONAL 9200 VN:026268 Cummins M11 diesel engine, Fuller 7 speed transmission, power steering, 295/75R22.5 tires, dual wheel single axle.



1995 INTERNATIONAL 9200 VN:034570 Cummins M11 diesel engine, IH SD-PS-9N transmission, power steering, 295/75R22.5 tires, dual wheel single axle.

1998 FREIGHTLINER CENTURY CLASS VN:787538 Cat C12 diesel engine, Road Ranger 10 speed transmission, power steering, 60in. double bunk sleeper, air ride suspension, polished aluminum wheels, 295/75R22.5 tires, tandem axle.

1993 FREIGHTLINER FLD120 VN:437060 Detroit Series 60 diesel engine, power steering, 295/75R22.5 tires, dual wheel single axle.



1996 PETERBILT 377 VN:410369 Detroit Series 60 diesel engine, 365hp, Rockwell 10 speed transmission, air ride suspension, 11R22.5 tires, tandem axle.

1977 KENWORTH K1000 VN:58444K Cat 3408 diesel engine, RTO12515 transmission, power steering, sliding 5th wheel, polished aluminum wheels, 11R234.5 tires, tandem axle.



FORD L9000 VN:N/A Detroit Series 60 diesel engine, Road Ranger 9 speed transmission, power steering, 11R22.5 tires, dual wheel single axle.

DUMP TRUCK

1982 MACK RD688S VN:002063 Mack ENDT676 diesel engine, Road Ranger 8LL transmission, power steering, East aluminum dump body, 40K rears, 20K pusher, 315/80R22.5 F tires, 11R24.5 R tires, air lift third axle, triaxle.

ROLLOFF TRUCK



1999 FREIGHTLINER BUSINESS CLASS VN:B02282 Cummins diesel engine, Road Ranger 8LL transmission, power steering, Galbreath U5-OR-174 60000# body, spring suspension, 315/80R22.5 tires, tandem axle.

CAB & CHASSIS

2006 NISSAN UD1800CS VN:F55154 Nissan diesel engine, automatic transmission, power steering, 215/75R17.5 tires, dual wheel single axle.

1999 INTERNATIONAL 4700 VN:228703 T44E diesel engine, automatic transmission, power steering, 295/75R22.5 tires, dual wheel single axle.

3 VAN TRUCKS



2001 FREIGHTLINER COLUMBIA VN:H99673 Detroit Series 60 diesel engine, 430hp, Smartshift automatic transmission, power steering, 60in. high top sleeper, 40K rears, polished aluminum wheels, 295/75R22.5 tires, swing rear doors, lift gate, air ride suspension, tandem axle.



2000 FREIGHTLINER FL70 VN:H07344 Cat 3126 diesel engine, automatic transmission, power steering, Derosa 20ft. body, 33K GVWR, polished aluminum wheels, 11R22.5 tires, dual wheel single axle.



1990 MACK MS200P VN:031117 6 cylinder diesel engine, power steering, Morgan 20ft. Body, 11R22.5 tires, dual wheel single axle.

6 SERVICE TRUCKS



1999 FORD F550XL VN:C43580 7.3 liter diesel engine, automatic transmission, Reading service body, 225/70R19.5 tires, dual wheel single axle.



1999 FORD F550XL VN:E72933 7.3 liter diesel engine, automatic transmission, Reading walk in service body, 225/70R19.5 tires, dual wheel single axle.



1999 FORD F550XL VN:C22058 7.3 liter diesel engine, automatic transmission, Reading walk in service body, 225/70R19.5 tires, dual wheel single axle.



1997 FORD F450 VN:A54566 7.3 liter diesel engine, automatic transmission, Reading walk in service body, 225/70R19.5 tires, dual wheel single axle.



1997 FORD F450 VN:A54567 Powerstroke diesel engine, automatic transmission, Reading walk in service body, LT295/85R16 tires, dual wheel single axle.



1995 CHEVY 3500 VN:231787 gas engine, automatic transmission, Reading walk in service body, LT215/85R16 tires, dual wheel single axle.

12 BUSES



2004 FORD E450SD BUS VN:A07913 Triton V10 gas engine, automatic transmission, power steering, Coach & Equipment Thor body with rear wheel chair lift, 16-passenger, LT225/75R16 tires, dual wheel single axle.



2001 FORD E450SD BUS VN:B21904 Triton V10 gas engine, automatic transmission, power steering, Eldorado Aerotech body with rear chair lift 16-passenger, LT225/75R16 tires, dual wheel single axle.



2000 FORD E450SD BUS VN:A80728 Triton V10 gas engine, automatic transmission, power steering, Eldorado Aerotech body with rear chair lift 16-passenger, LT225/75R16 tires, dual wheel single axle.

2001 INTERNATIONAL SCHOOL BUS VN:911395 American Transportation body, no engine or transmission.
2000 INTERNATIONAL 3800 SCHOOL BUS VN:301175 Carpenter 72 passenger body, no engine or transmission.
1999 INTERNATIONAL 3800 SCHOOL BUS VN:202260 Thomas Built body, no engine or transmission.
1998 INTERNATIONAL 3800 SCHOOL BUS VN:567758 T444E diesel engine, Thomas Built body.
1997 INTERNATIONAL 3800 SCHOOL BUS VN:506021 Blue Bird body, no engine or transmission.



1995 INTERNATIONAL 3800 SCHOOL BUS VN:251715 DT466 diesel engine, Blue Bird body.

1993 INTERNATIONAL SCHOOL BUS VN:N/A Carpenter body.

1988 GMC SCHOOL BUS VN:539080 diesel engine, Blue Bird body.

1988 FORD B700 SCHOOL BUS VN:A52293 diesel engine, Blue Bird body.

VANS



2003 FORD E250 VN:B45882 gas engine, automatic transmission, power steering.



2003 FORD E250 VN:HB50997 gas engine, automatic transmission, power steering.

PICKUP TRUCK



2004 FORD F150XL VN:A67717 4x4, Triton V8 gas engine, automatic transmission, supercab, power steering, 235/70R16 tires.

GOOSENECK TRAILER

2000 TAKE 3 VN:540439 21000 GVWR, 32ft. X 102in. main deck w/ 10ft. beaver tail and 8ft. upper deck, slide out rear ramps, LT235/85R16 tires, triaxle.

FLATBED TRAILER



1999 RAVENS VN:500116 48ft. X 102in., 79900 GVWR, aluminum frame, aluminum/wood deck, aluminum headboard, spread axle, air ride suspension, 295/75R22.5 tires, tandem axle.

18 REFRIGERATED TRAILERS



2007 WABASH VN:049964 53ft. X 102in., insulated, aluminum floor, aluminum sides, 295/75R22.5 tires, Carrier Ultra XT X Series reefer unit, sliding tandem axle.

1997 WABASH VN:433176 53ft. X 102in., swinging rear doors, insulated, aluminum floor, 295/75R22.5 tires, Carrier Phoenix Advantage reefer, sliding tandem axle.

2001 UTILITY VN:501454 53ft. X 102in., air ride suspension, SS swinging rear doors, aluminum floor, aluminum sides, 295/75R22.5 tires, Thermoking SB-III SR+ Whisper Edition reefer unit, sliding tandem axle.

1999 UTILITY VN:821004 48ft. X 102in., roll up rear door, insulated, aluminum sides, side door each side, 295/75R22.5 tires, Thermoking SB-III DE SR reefer unit, sliding tandem axle.

1999 UTILITY VN:821005 48ft. X 102in., roll up rear door, insulated, aluminum sides, side door each side, 295/75R22.5 tires, Thermoking SB-III DE SR reefer unit, sliding tandem axle.

1997 UTILITY VN:250212 48ft. X 102in., roll up rear door, insulated, aluminum sides, side door each side, 295/75R22.5 tires, Thermoking SB-III 30 DE-2 SR reefer unit, sliding tandem axle.



1985 UTILITY VN:239801 48ft. X 102in., insulated, aluminum floor, aluminum sides, 11R24.5 tires, Carrier Thunderbird reefer unit, sliding tandem axle.

1998 GREAT DANE VN:142107 48ft. X 102in., swinging rear doors, insulated, aluminum floor, aluminum sides, (3) right side doors, 295/75R22.5 tires, Thermoking SB-III TC SR reefer unit, sliding tandem axle.

1989 GREAT DANE VN:007633 53ft. X 102in., SS swinging rear doors, aluminum floor, insulated, aluminum sides, 295/75R22.5 tires, Thermoking Whisper Edition Magnum reefer unit, sliding tandem axle.



GREAT DANE VN:N/A 53ft. X 102in., swinging rear doors, aluminum floor, insulated, aluminum sides, (3) right side doors, 295/75R22.5 tires, Thermoking SB-III TC SR reefer unit, sliding tandem.

GREAT DANE VN:N/A 53ft. X 102in., swinging rear doors, aluminum floor, insulated, aluminum sides, (3) right side doors, 275/80R22.5 tires, Thermoking SB-III TC SR reefer unit, sliding tandem axle.

GREAT DANE VN:N/A 53ft. X 102in., swinging rear doors, aluminum floor, insulated, aluminum side, (3) right side doors, 275/80R22.5 tires, Thermoking SB-III TC SR reefer unit, sliding tandem axle.

(2) GREAT DANE VN:N/A 53ft. X 102in., swinging rear doors, aluminum floor, insulated, aluminum sides, (3) right side doors, 295/75R22.5 tires, Thermoking SB-III TC SR reefer unit, sliding tandem axle.

GREAT DANE VN:N/A 48ft. x102", VIN no tag, sliding tandem, swinging rear doors, aluminum floor, insulated, aluminum sides, (3) right side doors, 295/75R22.5 tires, Thermoking SB-III TC SR reefer unit

GREAT DANE VN:N/A 48ft. X 102in., swinging rear doors, aluminum floor, insulated, aluminum sides, (3) right side doors, 295/75R22.5 tires, Thermoking SB-III TC SR reefer unit, sliding tandem axle.



FRUEHAUF VN:N/A 48ft. X 102in., swinging rear doors, aluminum floor, aluminum sides, 295/75R22.5 tires, Carrier reefer unit, sliding tandem axle.

VAN TRAILER VN:N/A 53ft. X 102in., SS Swinging rear doors, aluminum floor, insulated, aluminum sides, polished aluminum wheels, 11R24.5 tires, Carrier reefer unit, sliding tandem axle.

102 VAN TRAILERS



1997 WABASH VN:359021 48ft. X 102in., 68000 GVWR, 13'4" height, spring suspension, roll up rear door, wood floor, translucent roof, composite sides, 11R22.5 tires, sliding tandem axle.

(4) 1997 WABASH VN:N/A 48ft. X 102in., 68000 GVWR, 13'4" height, spring suspension, roll up rear door, wood floor, translucent roof, composite sides, 11R22.5 tires, sliding tandem axle.

1997 WABASH VN:409859 48ft. X 102in, 68000 GVWR, 13'4" height, spring suspension, roll up rear door, wood floor, translucent roof, composite sides, 11R22.5 tires, sliding tandem axle.

1997 WABASH VN:397092 48 ft. x 102in., 68000 GVWR, 13'4" height, spring suspension, roll up rear door, wood floor, translucent roof, composite sides, 11R22.5 tires, sliding tandem axle.

1997 WABASH VN:N/A 48'x102", VIN no number, 68000 GVWR, 13'4" height, sliding tandem, spring suspension, roll up rear door, wood floor, translucent roof, composite sides, 11R22.5 tires, sliding tandem axle.

1997 WABASH VN:036976 28ft. X 102in., 13'6" height, spring suspension, roll up rear door, aluminum floor, SS roof, composite sides, 275/80R22.5 tires, single axle.



VAN TRAILER VN:N/A 48ft. X 102in., 13'4" height, spring suspension, roll up rear door, wood floor, SS roof, aluminum sides, plywood lined, 296/75R22.5 tires, sliding tandem axle.

VAN TRAILER VN:N/A 48ft. X 102in., 13'4" height, spring suspension, roll up rear door, wood floor, SS roof, aluminum sides, plywood lined, 11R22.5 tires, sliding tandem axle.

1999 STRICK VN:433802 45ft. X 96in., 65K GVWR, cast spoke wheels, 12'6" height, spring suspension, roll up rear door, wood floor, translucent roof, aluminum sides, 275/80R22.5 tires, sliding tandem axle.

1999 STRICK VN:433829 45ft. X 96in., 65K GVWR, cast spoke wheels, 12'6" height, spring suspension, roll up rear door, wood floor, translucent roof, aluminum sides, 275/80R22.5 tires, sliding tandem axle.

1998 STRICK VN:422140 45ft. X 96in., 65K GVWR, cast spoke wheels, 12'6" height, spring suspension, roll up rear door, wood floor, translucent roof, aluminum sides, 275/80R22.5 tires, sliding tandem axle.

1997 STRICK VN:422161 45ft. X 96in., 65K GVWR, cast spoke wheels, 12'6" height, spring suspension, roll up rear door, wood floor, translucent roof, aluminum sides, 275/80R22.5 tires, sliding tandem axle.

A green refrigerated semi-trailer is shown from a side profile. It has a cartoon character of a person in a white lab coat and a stethoscope around their neck, with a large 'X' over their eyes, painted on the side. The trailer is parked on a grassy area.

A white semi-trailer truck is parked on a grassy field. The trailer has a large rectangular window on its side and a red emergency light bar mounted on the front. The truck is positioned in the center of the frame, with a yellow background on the left and a blue sky on the right.

1998 WABASH VN:496596 45ft. X 96in., 68000# GVWR, 12'6" height, spring suspension, roll up rear door, wood floor, translucent roof, aluminum sides, 295/75R22.5 tires, sliding tandem axle.

5 REAL ESTATE



Parcel 1: 229 POCONO RD, COOLBUAGH TOWNSHIP, PA, Just off I-380 at exit 3, within 2 miles of I-380 & I-80 Interchange. **REAL ESTATE** Approximately .99 acres. Use is repair services Building, Has a 30x50 Shop Building, Septic system, Well water, Ten 45-foot containers, can be cut/divided and used as storage rentals or good Storage. Current use of Property is for heavy duty towing, repairs, parts. Zoned Comm'l. In good area in heart of trucking capital of tri-state area.



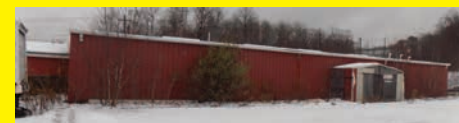
Parcel 2: 5TH AVENUE & BROADWAY REAL ESTATE. Beautiful Large Church Building with Lg. adjoining Basketball/Recreational Building al All on Corner Lot. Approximately 150 x 125, Zoned Commercial other Church building, Church building, Historic, 107 year old building. Located in central Scranton. Potential commercial development. Includes hall next door that has a regulation basketball court. Both church and hall have basements, Parcels are selling together. An Amazing Historic Building, an architectural wonder!!



Parcel 3: 1777 LAMB RD THOMPSON, PA **SUSQUEHANNA COUNTY REAL ESTATE** Pin: 115.00-2,011.00,000 This is a farm, 21 acres, House, Barn with 10 stalls, Gas rights included, No Current Gas Lease. Withing 2 miles of Village of Thompson PA, 10 miles from Lenox PA (I-81) 10 Miles from Susquehanna Pa (northern Pa- Marcellus Shale Country).



Parcel 4: STATE ROUTE 93, TOWNSHIP OF SUGARLOAF, CONYNGHAM, PA REAL ESTATE Approximately 3.73 acres. in 2 tax map parcels. Former gas station and convenience store with clean environmental report. This property is to be sold in a package with approximately 3 acres bordering it to the West. Environmental clean-up performed, over \$650,000.00 clean-up. Tanks removed. Near interstate I-80, that is getting busier. Being sold with 3 acres bordering. there is an easement included. Lots of Possibilities for commercial development, hotel, restaurant. Just off I-80 exit, 1st exit west of intersection of Highways I-81 & I-80.



Parcel 5: BOB MELLOW DRIVE, JESSUP TOWNSHIP PA REAL ESTATE, within 1/4 mile of New Rt. 6, Exit 3. Approximate 4.86 acre lot situated at the corner of Bob Mellow Drive and Meya Drive, Jessup, PA. Relatively flat lot improved with 35'x80' Steel Commercial Office/Storage Building fronting on Bob Mellow Drive An approximately 80000 square foot artificial turf field is on the property. Nice Level Land, The lot has gas, water and sewer available. Was a sports air dome. Concrete 6 to 8 foot foundation around whole 80,000 sq. foot lot. Easy access to Route 6. Includes building. Highly developing industrial area Great Commercial Location!!

Real Estate Auction Terms:

A 10% Buyers Premium on Final Bid Price of Each Parcel will be Charged. Buyers Premium will be added to final bid Price, total becomes the Purchase Price. 20% down payment of Total Purchase Price due day of Auction at signing of Purchase Agreements by cash or Good Check. Balance due at Closing in 30 days. Real Estate being offered at Sellers confirmation of Price. Parcels sold with good title, If good title cannot be given, down payment would be returned to buyers. Parcels Sell As-is, where is, with No Contingencies any test wanted or needed must be done prior to Auction. Inspection of Parcels with Buildings: Please Call Matt Manasse @ 607-692-4540 for appt.

AMERICA'S AUCTION COMPANY

ATLANTIC CITY, NEW JERSEY (AC RACE TRACK) - SAT., DEC. 15TH AT 9:00 AM

ADDRESS: 4501 Leipzig Ave, Mays Landing, New Jersey 08330. **NOTE:** Selling will be Late Model Rental Fleet Equipment from several National Rental Companies. **SALE SITE PHONE:** (609) 204-3189 Jay. **TERMS & CONDITIONS:** "Cash or Company Check" accompanied by current "Bank Letter of Guarantee", made payable to Alex Lyon & Son. Everything Sells "AS IS, WHERE IS." *The following charges will apply on all purchases:* (1.) For each unit \$25,001.00 and above, a 5.95% administration fee will be assessed when paying with cash or good check. (The standard fee of 8.95% will be assessed when paying with credit card). (2.) For each unit \$1,001- \$25,000, a 10% administration fee will be assessed when paying with cash or good check, and a 13% fee will be assessed when paying with credit card. (3.) For each unit \$0-\$1,000, a 12.5% administration fee will be assessed when paying with cash or good check, and a 15.5% fee will be assessed when paying with credit card.



FOR BID ONLINE TECHNICAL ASSISTANCE CALL
Proxibid: (855) 636-6461
Nextlot: (919) 361-1111

10 HYDRAULIC EXCAVATORS

2013 CAT 320EL SN:NAZ00263 Cat diesel engine, Cab, air, reach boom, 9ft. 7in. Stick, 32in. Pads, hydraulic quick coupler, 48in. Digging bucket, long undercarriage,



2016 CAT 313FL Cat C3.4B diesel engine, Cab, air, hammer piping, quick coupler, digging bucket, long undercarriage.

2015 CAT 312E Cat C4.4 ACERT diesel engine, Cab, air, 10ft. stick, auxiliary hydraulics, 24in. TBG pads, hydraulic coupler, digging bucket.
2014 CAT 312E Cat C4.4 ACERT diesel engine, Cab, air, 10ft. stick, auxiliary hydraulics, 24in. TBG pads, hydraulic coupler, digging bucket.
2014 CAT 308E SN:TMX00637 Cat diesel engine, Cab, air, front blade, rubber pads, digging bucket
2014 CAT 308E Cat diesel engine, Cab, air, swing boom, auxiliary hydraulics, rubber tracks, Cat quick coupler, 24in. Digging bucket.



2014 KOMATSU PC138US-10 Komatsu diesel engine, Cab, air, heat, 10ft. stick, combination hydraulics, 28in. pads, hydraulic coupler, digging bucket.

2010 KOMATSU PC138USLC-8 SN:23139 Komatsu diesel engine, Cab, air, heat, auxiliary hydraulics, 20in. Road liner pads, digging bucket.

2015 JOHN DEERE 27D SN:260261 John Deere diesel engine, OROPS, front blade, 2-speed, swing boom, auxiliary hydraulics, rubber tracks, digging bucket.

CASE CX80 SN:DAC881345 Cummins diesel engine, Cab, air, heat, front blade, auxiliary hydraulics, quick coupler, digging bucket.

DEMOLITION EXCAVATOR



CAT 330L SN:SYM02085 Cat diesel engine, High Rise Cab, reach boom.

6 HYDRAULIC HAMMERS

ATLAS COPCO HB4200 SN:1765

INDECO HP4000 SN:5375

ATLAS COPCO MB1700 SN:DEW131889

ATLAS COPCO MB1500 SN:0153

INDECO HP1250 SN:0308

INDECO HP1250 SN:0305

3 EXCAVATOR THUMBS

NEW GENTEC HT2650 HYDRAULIC UNIVERSAL THUMB fits excavators up to 50,000lb.

(2) **NEW GENTEC HT830 HYDRAULIC THUMB** fits 6-10,000lb machines.

TRACTOR LOADER BACKHOE ATTACHMENTS

INDECO HP500 HYDRAULIC HAMMER SN:23827

INDECO HP500 HYDRAULIC HAMMER SN:25359

ARTICULATED HAUL TRUCK

JOHN DEERE 250D SN:201067 6x6, John Deere diesel engine, Cab, air, heat, 25 ton capacity.

6 RUBBER TIRED LOADERS



2017 CASE 621F SN:NGF236200 FPT F4HFE413W diesel engine, EROPS, air, heat, heated air seat, am/fm, 3-spool, 1-lever, ride control, counterweight package, rotating beacon, JRB quick coupler, 3 yard GP bucket, 20.5 x 25 L3 rubber. Under 150 hours. Full Machine Warranty: 3,000 hours or October 2019.



2017 CASE 621F SN:NGF236201 FPT F4HFE413W diesel engine, EROPS, air, heat, heated air seat, am/fm, 3-spool, 1-lever, ride control, counterweight package, rotating beacon, JRB quick coupler, 3 yard GP bucket, 20.5 x 25 L3 rubber. Under 150 hours. Full Machine Warranty: 3,000 hours or October 2019.

CAT 938G SN:4YS02563 Cat diesel engine, EROPS, air, heat, GP bucket.



JCB 426Z SN:1173033 Cummins turbo diesel engine, 150hp, EROPS, air, heat, 4-speed, 3rd valve hydraulics, 100in. GP bucket.



JCB 426Z SN:1173042 Cummins turbo diesel engine, 150hp, EROPS, air, heat, 4-speed, 3rd valve hydraulics, 100in. GP bucket.



JCB 426Z SN:1173058 Cummins turbo diesel engine, 150hp, EROPS, air, heat, 4-speed, 3rd valve hydraulics, 100in. GP bucket.

ROUGH TERRAIN CRANE

KOEHRING LRT275D SN:78942 4x4, Cummins diesel engine, EROPS, heater, powershift transmission, 27.5 ton lift capacity, 30-72ft. Main boom, 3-way steering, 30 ton load block, (4) hydraulic outriggers, rough terrain tires. New re-barreled main piston.

VIBRATORY ROLLER

2018 BOMAG BW177D-5 Kubota V3307-CR-R-EF04 diesel engine, EROPS, air, 66.4in. Smooth drum, vibratory drum, drum drive.

TRENCH ROLLERS

WACKER RT820 diesel engine, equipped padsfoot drum, double drum, vibratory drum, drum drive, remote.

AMPAC R33/24 diesel engine, equipped padsfoot drum, double drum, vibratory drum, drum drive, remote.

RUBBER TRACKED SKID STEER

CAT 257B SN:200873 Cat diesel engine, EROPS, auxiliary hydraulics, mechanical quick coupler, 16in. rubber tracks, GP bucket.

5 SKID STEERS



2016 CAT 236D SN:BGZ03056 Cat diesel engine, EROPS, air, heat, auxiliary hydraulic, electric mechanical quick coupler, GP bucket, 154 hours.



2015 CAT 236D SN:BGZ01943 Cat diesel engine, EROPS, air, heat, 2-speed, auxiliary hydraulics, electric quick coupler, GP bucket, 95 hours.

2015 CAT 236D SN:BGZ01937 Cat diesel engine, EROPS, air, heat, 2-speed, auxiliary hydraulics, electric quick coupler, GP bucket, 95 hours.

2010 BOBCAT S250 SN:A5GM35212 diesel engine, EROPS, air, heat, auxiliary hydraulics, mechanical quick coupler, GP bucket.

2011 BOBCAT S160 SN:A3L336567 Kubota diesel engine, rollage, auxiliary hydraulics, mechanical quick coupler, GP bucket.

53 SKID STEER ATTACHMENTS

CAT BA18 84IN. HYDRAULIC POWER ANGLE BROOM

STANLEY MD3570 HYDRAULIC HAMMER

STANLEY PNEUMATIC HAMMER

HUSKEY HH750 HYDRAULIC HAMMER

BUYERS HYDRAULIC POWERED SALT SPREADER

16FT. PRO ANGLE SNOW PUSHER

8FT. 6IN. MYERS POWER ANGLE SNOW PLOW

OKADA TOP 35 HYDRAULIC HAMMER SN:1231

UNUSED LOWE 1650 HYDRAULIC HAMMER

UNUSED LOWE 750 HYDRAULIC AUGER with 18in. & 12in. Bits.

UNUSED STOUT ZHD84-6 BRUSH GRAPPLE

UNUSED STOUT 84IN. MATERIAL BUCKET W/

DOUBLE CUT EDGE

UNUSED STOUT HD72-4 CLOSE TINE BRUSH GRAPPLE

UNUSED STOUT HD72-FB GRAPPLE BUCKET

(3) **NEW 90IN. BUCKET**

(2) **NEW 78IN. SKELETON W/ TEETH**

(2) **NEW 78IN. SKELETON**

(2) **NEW 78IN. BUCKET W/TEETH**

(2) **NEW 78IN. BUCKET**

(2) **NEW 66IN. BUCKET W/TEETH**

(2) **NEW 66IN. BUCKET**

NEW ROCK, SLAB STUMP REMOVER

NEW ROOT RAKE

(16) **NEW ATTACH FRAME**

NEW 2 CUBIC YARD TRASH HOPPER

(2) **NEW 3/4 CUBIC YARD CONCRETE PLACEMENT BUCKET**

NEW 1.5 CUBIC YARD TRASH HOPPER

(2) **NEW JBX 4000 48IN. FORKS**

3 TELESCOPIC FORKLIFTS

2018 GENIE GTH2506 4x4, Deutz D2011 L04 diesel engine, 67.1hp, EROPS, air, 5,500lb lift capacity, 19ft. Reach height, 12-16.5 PR10 rubber.

GENIE GTH5519 SN:24826 4x4, diesel engine, EROPS, 5,500lb lift capacity, 19ft. Reach height.

AMERICA'S AUCTION COMPANY



2007 TEREX TELELIFT 2506 SN: 15082 4x4, diesel engine, OROPS, 5,500lb lift capacity, 19ft. Reach height.

3 BOOM LIFTS

2011 GENIE Z-60/34 SN:Z6011-10196 dual fuel engine, 60ft. Platform height, articulating boom, 500lb lift capacity.

2007 GENIE Z-60/34 SN:Z6007-7551 4x4, dual fuel engine, 60ft. Platform height, straight boom, 500lb lift capacity.



JLG 600S SN:300087370 4x4, diesel engine, 60ft. Platform height, straight boom, 500lb lift capacity.

8 SCISSOR LIFTS

2008 GENIE GS-2632 SN:GS3208-91362 electric powered, 20ft. Platform height, slide out deck, 500lb lift capacity.

2007 GENIE GS-2632 SN:GS3207-85064 electric powered, 20ft. Platform height, slide out deck, 500lb lift capacity.

GENIE GR26K electric powered, 26ft. platform height.



2008 GENIE GS-2032 SN:GS3208-93297 electric powered, 20ft. Platform height, slide out deck, 500lb lift capacity.

2008 GENIE GS-2032 SN:GS3208-93285 electric powered, 20ft. Platform height, slide out deck, 500lb lift capacity.

2008 GENIE GS-2032 SN:GS3208-92711 electric powered, 20ft. Platform height, slide out deck, 500lb lift capacity.

2008 GENIE GS-2032 SN:GS3208-91693 electric powered, 20ft. Platform height, slide out deck, 500lb lift capacity.

2008 GENIE GS-2032 SN:GS3208-91654 electric powered, 20ft. Platform height, slide out deck, 500lb lift capacity.

LIFT ATTACHMENT

JLG 8FT. BASKET

7 WELDERS

(6) LINCOLN PC600



MILLER ELECTRIC MARK VIII MULTIPLE OPERATOR WELDING SYSTEM SN:3827 Each module offers up to 300 amps output, 230/460/575 V, 60 Hz, can handle Stick, DC-TIG welding, and wire welding (FCAW and MIG) with a voltage-sensing feeder.

3 LIGHT PLANTS



2011 ALLMAND NITE LITE PRO SN:2353PRO11 diesel engine, 4-1,000 watt lightbulbs, 6KW, trailer mounted.



2011 ALLMAND NITE LITE PRO SN:2312PRO11 diesel engine, 4-1,000 watt lightbulbs, trailer mounted.



WACKER LT4 SN:5269344 diesel engine, 4-1,000 watt lightbulbs, 6KW, trailer mounted.

ARROW/MESSAGE BOARD



2009 WANCO VMS MESSAGE BOARD VN:1002217

TRACTOR LOADERS

(2) **2017 NEW HOLLAND WORKMASTER 33** 4x4, diesel engine, 33hp, ROPS, gear shift, front loader with GP bucket, 3pt hitch, PTO.

TRACTOR ATTACHMENT

NEW TORO 84IN. REAR DISCHARGE MOWER DECK

BUCKET TRUCK



2012 INTERNATIONAL 4300 VN:598516 Maxxforce DT466 diesel engine, Eaton automatic transmission, power steering, a/c, heat, VST-471 Versalift boom, 52ft. Working height, single man basket, hydraulic tool outlets, Hybrid system, dual wheel single axle, 121,160 miles.

VAN TRUCKS

2000 INTERNATIONAL 4300

VN:1HTSCABM8YH294849 diesel engine, power steering, 22ft. Van body, 7ft. Liftgate, 295/75R22.5 tires, dual wheel single axle.



2000 FREIGHTLINER VN:07337 Cat 3126 diesel engine, Allison automatic transmission, power steering, air brakes, 33000lb GVW, 11R22.5 tires, dual wheel single axle.

ROLLOFF TRUCKS



2012 INTERNATIONAL TERRASTAR VN:387531
Cummins diesel engine, Allison automatic transmission, am/fm radio, 17ft. 8in. Rolloff bed, hydraulic brakes, dual wheel single axle, 168,975 miles.



2012 INTERNATIONAL TERRASTAR VN:043611
Cummins diesel engine, Eaton automatic transmission, am/fm radio, 16ft. 8in. Rolloff bed, hydraulic brakes, dual wheel single axle, 163,108 miles.

5 TRUCK TRACTORS



2013 PETERBILT 386 VN:184363 Cummins-Westport GX-450 15L Liquid Natural Gas engine, 455hp, FO-16E310C-LAS ultra shift 10-speed automatic transmission, power steering, air, cruise, 3.7 gear ratio, locking rears, front disc brakes, lane avoidance systems, 190in. wheelbase, tandem axle.



2012 INTERNATIONAL PROSTAR VN:672788
International Maxx Force F13 diesel engine, 430hp, Eaton Fuller Ultrashift FRO-16210C speed transmission, power steering, 236in. Wheelbase, 3.55 rear ratio, tandem axle, 176,472 miles. DAY CAB



2012 INTERNATIONAL PROSTAR VN:672787
International Maxx Force F13 diesel engine, 430hp, Eaton Fuller Ultrashift FRO-16210C speed transmission, power steering, 236in. Wheelbase, 3.55 rear ratio, tandem axle, 193,990 miles. DAY CAB



2012 INTERNATIONAL PROSTAR VN:672789
International Maxx Force F13 diesel engine, 430hp, Eaton Fuller Ultrashift FRO-16210C speed transmission, power steering, 56in. 236in. Wheelbase, 3.55 rear ratio, tandem axle, 147,065 miles. DAY CAB



2012 INTERNATIONAL PROSTAR 122 VN:565442
International Maxx Force F13 diesel engine, 430hp, Eaton Fuller Ultrashift FRO-16210C speed transmission, power steering, high rise sleeper, 236in. Wheelbase, 3.55 rear ratio, tandem axle.

DUMP TRUCK



2000 GMC 3500 VN:418921 diesel engine, power steering, dump body.

PICKUP TRUCKS



2012 DODGE RAM 1500 VN:233540 gas engine, automatic transmission, power steering.

2004 GMC SIERRA K1500 VN:209484 4x4, gas engine, automatic transmission, power steering, extended cab.

10 TAGALONG TRAILERS



(10) 2019 DELTA 27TB 16ft. Tilt deck, 4ft. Stationary deck, chain box, electric brakes, (2) 7,000lb axles, HD jack, tandem axle.

ROLLOFF CONTAINER



1991 BEN-LEE 80-GW VN:180771 80,000lb roll-off body, air ride, 22.5 tires, tandem axle.

SNOW EQUIPMENT

MYERS PRO II UNIMOUNT 9FT. POWER ANGLE

3 WATER TRUCK BODIES

NEW MAROTTA MATTEO 4500 GALLON trapezoid shape, 3-internal baffles, manway, ladder, sight gauge, light bracket w/ LED lights, fender, plumbing kit, six independent air operated valves, cab control console to each valve, water pump 4x3 centrifugal pump 750GPM @75 PSI w/ ceramic seal. SP5 sandblasted & epoxy coating. 2 year manufacture warranty on leakage & workmanship defects.

NEW MAROTTA MATTEO 3500 GALLON trapezoid shape, 3-internal baffles, manway, ladder, sight gauge, light bracket w/ LED lights, fender, plumbing kit, six independent air operated valves, cab control console to each valve, water pump 4x3 centrifugal pump 750GPM @75 PSI w/ ceramic seal. SP5 sandblasted & epoxy coating. 2 year manufacture warranty on leakage & workmanship defects.

NEW MAROTTA MATTEO 2000 GALLON trapezoid shape, 2-internal baffles, sight gauge, manway, ladder, light bracket w/ LED lights and fender. Plumbing kit: 4x3 centrifugal pump 750GPM @75 PSI w/ ceramic seals, (6) independent air operated valves, Cab control to each valve. Epoxy coating. 2 year manufacture warranty on leakage & workmanship defects.

FOLLOW US ON   @LyonAuction

GOLF CART

2016 CLUB CART

RECREATIONAL VEHICLES

(2) NEW 110 CC ATV

3 SCRAP RECYCLING EQUIPMENTNEW 2 YARD STACKABLE SELF DUMPING HOPPER
4,000lb capacity.NEW 1.5 CUBIC YARD STACKABLE SELF DUMPING
HOPPER 4,000lb capacity.NEW 1 CUBIC YARD STACKABLE SELF DUMPING
HOPPER 4,000lb capacity.**EQUIPMENT PART**

2014 (12) BOTTOM ROLLERS for Cat D8T.

14 TIRES, NEW & USED

NEW BRIDGESTONE 235/75/16 TIRE

(2) BRIDGESTONE 235/75/16 TIRES

BRIDGESTONE 235/75/16 TIRE (RETRAD)

FIRESTONE 235/75/16 TIRE

(2) GOODYEAR 235/75/16 TIRE

KIRKLAND 235/75/16 TIRE

MICHELIN 235/70/16 TIRE

(6) STEEL DUALY FORD RIMS W/ 225/70/19.5
TIRES**76 PALLETS OF STONES**

(76) NEW PALLET OF ASSORTED PA BLUESTONE

4 PRESSURE WASHERS(4) NEW EASY KLEEN MAGNUM GOLD gas engine,
4000PSI, 12Volt, 15hp, Hot Water, totally self contained.**388 NEW SUPPORT EQUIPMENT**(8) NEW 7500 WATT GENERATOR gas engine, 13hp,
7500 watts, electric start, automatic voltage regulator,
backup pull-start, hd steel frame with fully isolated motor
mounts for quietness, low oil shutoff, (2) 110v, 30amp
power outlets, (1) 240V NEMA L14-30R twist-lock outlet,
(1) 120V NEMA L5-30R twist-lock outlet, (1) 12V 8.3amp
DC outlet, wheel kit. EPA approved emissions.

(3) NEW MUSTANG LF88 PLATE COMPACTOR

(4) NEW MUSTANG MP4800 2IN. SUB PUMP

(2) NEW MUSTANG CV3500 CONCRETE VIBRATOR

(2) NEW HUSKIE B65 ELECTRIC DEMO HAMMER

(2) NEW HUSKIE 11218SDS HAMMER DRILLS

(8) NEW 3 PC. 14IN. PREMIUM DIAMOND BLADES

(8) NEW 25FT., 800AMP EXTRA HD BOOSTER CABLE

(4) NEW AUTO DARKENING WELDING HELMET

(3) NEW 1/2IN. DRIVE AIR IMPACT WRENCH KIT

(2) NEW STIFF NECK PINTLE HITCHES

(6) NEW 2IN. X 50FT. DISCHARGE WATER HOSE

(2) NEW 4PK. 10,000LB. RATCHET CARGO STRAPS

(2) NEW 6PK. 14IN. ABRASIVE BLADES

(4) NEW 29.5IN. X 60IN. HEAVY DUTY WORK
BENCH W/ SHELF

(4) NEW 30IN. X 57IN. WELDING TABLE W/SHELF

(4) NEW 3/8IN. AR500 GONG TARGET

(2) 21 PC 3/4" DRIVE SOCKET SET- MET

(2) 21 PC 3/4" DRIVE SOCKET SET- SAE

(5) 2" X 27' STRAP S-LINE (2 PER BAG)

(2) 20 TON BOTTLE JACK

(4) 2000# ATV WINCH

(2) 1" AIR IMPACT WRENCH W/ BLOW CASE AND 2
IMPACT SOCKETS 1900 FT TORQUE

(6) BOW RAKE

(6) ROUND POINT SHOVEL

(6) 16" BULLDOG DRAIN SPADE

(6) WOOD HANDLE SPADE FORK

(4) 1000# TRAILER JACK

(2) FUEL BOSS 12 VOLT DIESEL FUEL TRANSFER
PUMP 10 GPM

(2) 10000 # WOOD POWER WINCH

(2) 1.5 HP 6 GAL 150 PSI PANCAKE AIR
COMPRESSOR(3) 1 GAUGE 25 FT PROSTART 1000 BOOSTER
CABLE FOR HEAVY EQUIPMENT

(2) 5000 # WOOD POWER WINCH

(3) 150 AMP ROLL AROUND BATTERY CHARGER

(3) 3 TON CHAIN HOIST

(3) 14 PC COMBINATION WRENCH SET- SAE - 3/8"
THRU 1 1/4"

(3) YELLOW TRACTOR SEAT

(3) 2 GAL CONTRACTOR SPRAYER - RL
FLOWMASTER

(2) 6" MULTI PURPOSE VISE

(2) 10 TON PORTA POWER

(2) 22 TON HEAVY DUTY COMMERCIAL HYDRAULIC
SERVICE BOTTLE JACK

(2) 48" ALUMINUM LEVELS- (24 IN CASE)

(3) 3/8" HUSKY AIR DRILL

(10) CASE OF YELLOW MARKING PAINT (12 PER
CASE)(3) 50 FT HEAVY DUTY OUTDOOR EXTENSION CORD
(2 PER LOT)(2) 100 FT HEAVY DUTY EXTENSION CORD (2 PER LOT)
4000 WATT RAVEN GENERATOR(2) 5.5 HP HONDA 10 GAL AIR COMPRESSOR MAC-
5501

(3) MAKITA 7 " ANGLE GRINDER - GA7021-C

(3) MAKITA 7 1/4" HYPOID SAW - 5477NB-B

(2) MAKITA COMPACT ROUTER - RT0701C-B

(2) MAKITA 1" rotary hammer - HR2621

(3) MAKITA IMPACT DRIVER - XDT111-R

(2) MAKITA 18 V COMPACT LITHIUM-ION
CORDLESS 2 PC COMBO KIT, 1/2" DRIVER DRILL&
IMPACT DRIVER, INCLUDES 2 BATTERIES -
LCT200W-C(2) MAKITA 18 V COMPACT 1/2" HAMMER DRILL -
XPH10R(2) MAKITA 18 V LXT RECIPRO SAW , TOOL ONLY -
XRJ04Z(2) MAKITA 18 V LXT BLOWER , TOOL ONLY
-BUB182Z-C

(2) MAKITA RECIPROCATING SAW - JR3050T

(2) DEMOLITION HAMMER

21 PC 1" DR SOCKET SET - M/M

21 PC 1" DR SOCKET SET - SAE

(3) LASER LEVEL TOOL KIT W/ LIGHT

(3) 2700 PSI BRUTE PRESSURE WASHER

3800 PSI JOHN DEERE PRESSURE WASHER

(3) ULTA STEEL DRILL

(3) LAWN MOWER JACK HEAVY DUTY PORTABLE -
ADJUSTABLE WIDTH- UP TO 450 LBS

(2) 2.5 HP EDGER

(2) PUSH LAWN MOWER - SELF PROPELLED

(2) PUSH LAWN MOWER - HIGH WHEEL

(2) PUSH LAWN MOWER

(2) 42" BARREL FAN

(2) REMINGTON REEL MOWER

(3) TIRE MOUNT- DISMOUNT TOOL

(2) EAGLE 10 GAL TIRE BLASTER

(4) 2 PC VALLEY DROP HITCH W/ 2" BALL (2 PER
LOT)10 FT TAPE MEASURE (12 IN BOX) (SELL AS ONE
LOT)(2) 1 BURNER COOKER AUTO ELECTRON STRIKE
STOVE

(3) 30" BOLT CUTTER

HOMELITE WATER PUMP 3"

HOMELITE WATER PUMP

TAPE MEASURE TAPE 1 1/4" X 25' (6 IN SET) (SELL
AS ONE LOT)

(4) 4 PC BEARING PULLER KIT

(2) 4" WATER PUMP

(4) NON FLAT WHEEL BARROW TIRE

(2) 1/2" DEEP IMPACT SOCKET SET 15 PC

(3) TORQUE MULTI PLIER LABOR SAVING LUG NUT
WRENCH

(5) STARTER FLUID (12 PER CASE)

(2) 3/8" DEEP SOCKET SET

(4) 36" LARGE PIPE WRENCH

(4) 32 PC COMBINATION O & B WRENCH SET

--MET 6,7,8,9,10,12,13,15,17,18, STUBBY 10 TO 15
--- SAE 1/4" TO 3/4" STUBBY 5/16" TO 5/8"

(4) 20 PC CTT SCREWDRIVER SET

(4) 4 PC CAL HAWK KEY ALIKE LOCK

(4) 4 FT GLUEING CLAMP

(4) GREASE GUN- HEAVY DUTY

(2) HEAVY DUTY SLIDE HAMMER / BEAD BREAKER
80 GAL 3 CYLINDER 2 STAGE MILLER AIR
COMPRESSOR

(3) MINI GREASE GUN W/ 6 TUBES OF GREASE

(2) 4 GAL HUSKY TWIN TANK AIR COMPRESSOR

(5) 50 PERSON CONSTRUCTION-INDUSTRIAL-
OFFICE FIRST AID KIT

(2) 75 lb REEL STEEL BLACK SMITH ANVIL

GREEN WESTERN EXPRESS WAGON

GREEN WESTERN EXPRESS TRICYCLE

PINK SOUTHERN BELLE TRICYCLE

RED WESTERN EXPRESS WAGON

RED WESTERN EXPRESS TRICYCLE

(3) FARM / DINNER BELL

(3) CURVED SHAFT WEDEATER

(2) POULAN CHAIN SAW 20"

(2) ELECTRIC LAWN MOWER

(2) 24 V LAWN MOWER

(2) MTD PARKING LOT BLOWER

(2) CHIPPER SHREDDER VACUUM - MADE IN THE USA

(4) PRO START BOOSTER CABLES 4 GAUGE

(4) INSTA BOOST JUMP STARTER 400 PEAK AMPS

3100 PSI KOHLER PRESSURE WASHER

(2) RESCUE 600 POWER PACK

(2) 6" BENCH GRINDER W/ STAND

(4) BROWN HEAVY DUTY 8 LB FIBERGLASS SLEDGE
HAMMER

(2) 14" COMMERCIAL METAL CUTOFF SAW W/ROCK

(2) GASOLINE AUGER

(3) 6 TON JACK STAND

ARMOR 64 GUN FIRE SAFE ELECTRONIC LOCK

REAR TINE TILLER

FRONT TINE TILLER

(2) FUEL BOSS 110 VOLT DIESEL EXHAUST FLUID
(DEF) TRANSFER PUMP

(2) 18V CORDLESS GREASE GUN

FUEL BOSS 12 VOLT, 25 GALLON FUEL TANK AND
PUMP COMBOINFRARED SAUNA, LCD MEDIA SMART CONTROL
PANEL, W/OUT BLUETOOTH TOWEL RACK, CUPHOLDER, SPEAKERS, LIGHT, 110 STANDARD PLUG
(3) CHEVRON TUBE GREASE (10 PER CASE)

JOB SITE TOOL BOX 48"

JOB SITE TOOL BOX 36"

JOB SITE TOOL BOX 30"

JOB SITE TOOL BOX 24"

ROOSTER WEATHERVANE

HORSE WEATHERVANE

(3) BLUE MOUNTAIN BRAKE CLEANER (12 PER
CASE) (SELL AS 1 LOT)

GOLF CART TIRES (4 PER SET)

(4) INDUSTRIAL LIGHT

(5) FUEL TANK ASSEMBLY

(2) HIGH WHEEL STRING TRIMMER

(2) 3 TON FLOOR JACK

(5) HONDA BLACK MAX SELF PROPELLED LAWN
MOWER

ELEC LOG SPLITTER

- (3) 208 ELECTRIC START GASOLINE MOTOR
- (2) WELDING CUTTING KIT
- (2) WELDING KIT W/ TOTE
- (2) 12 TON SHOP PRESS
- (2) PALLET OF STEEL DUMP CART 10 CT FT (5 PER PALLET)
- (2) 18 V CORDLESS 5 IN 1 TOOL KIT
- (10) 179 CC GENERAL PURPOSE ENGINE

54 SUPPORT EQUIPMENT

- BELLE 1550 BLOCK/ PAVER SPLITER
- (2) RED MAX 8500 BACK PACK LEAF BLOWER
- LESCO BACK BACK SPRAYER
- EZ-GO POWER WISE 48 VOLT GOLF CART CHARGER
- WEAVER WA-75 10 TON HYDRAULIC FLOOR JACK
- WE KA DK12 3 SPEED CORE BORING DRILL

- (3) COMPLETE SECTIONS OF MASON SCAFFOLDING
- COMPLETE SECTION OF SCAFFOLDING W/ (2) ALUMINUM DECKS
- PERRY BAKERS SCAFFOLD
- PLASTIC YARD CART
- CORE GRASS TURF REINFORCEMENT GRIDS 218PCS, 16IN. X 18IN. GRIDS, 490 SQ.FT.
- 30IN. EXHAUST FAN W/ MOTOR
- 2FT. X 4FT. STEEL WORK BENCH
- 9IN. CALIBER CHRISTMAS TREE STAND
- (6) CHAIN BINDER
- IGLOO 5 GALLON DRINKING WATER COOLER
- IGLOO 12 VOLT KOOLMATE ELECTRIC COOLER
- ROTO TILLER W/ BRIGGS & STRATTON 3HP MOTOR
- (2) METAL WELDING HELMET
- CRANE SCALE 23,000LB DIGITAL READ OUT with remote control, charger, and stand.

- ALLEN ENGINEERING 1050 RIDE ON POWER TROWEL
- WORKING PLATFORM
- (6) TRACTOR SEAT
- (5) LIFTING CHAIN
- (5) CART W/ FORK POCKET
- 4-PART CRANE CABLE LIFTER W/ HOOKS
- ELECTRIC JACK HAMMER W/ CART & BITS
- (2) MECHANIC CART
- PICKUP FUEL TANK W/ 12-VOLT ELECTRIC PUMP
- MULTIQUIP K-4-6R 36IN. CONCRETE POWER TROWEL
- ALLEN ENGINEERING 36IN. POWER TROWEL
- THOR PNEUMATIC HAMMER with 48in., 36in., and 24in. Bits.

FOLLOW US ON



@LyonAuction

LARGE RENTAL CONSTRUCTION EQUIPMENT AUCTION

HercRentals™

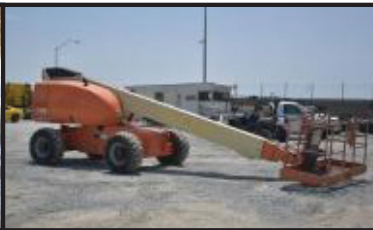
~Herc Rentals~

HercRentals™

Aerial Lifts, Forklifts, Backhoes, Midi & Mini Excavators, Trucks, Trailers, Loaders, Accessories, Support Equipment

SATURDAY, DECEMBER 29TH @ 10:00AM • GUELPH, ONTARIO, CANADA

ADDRESS: 4062 Highway 6 Puslinch, Ontario Canada (60 miles from Toronto)



NOTE: Herc Rentals having a very successful year in Ontario is selling late model Rental Fleet equipment to make room for new equipment for the upcoming season.

PRELIMINARY HIGHLIGHTS: **BOOM LIFTS:** Haulotte, JLG, Genie, Skyjack, **SCISSOR LIFTS:** JLG, Genie, Skyjack, **SKID STEERS:** Bobcat, John Deere, Case, **TRACTOR LOADER BACKHOES:** John Deere, Case, **TELESCOPIC FORKLIFTS:** Skytrak, Lull, **MIDI & MINI EXCAVATORS:** Bobcat, John Deere, **AIR COMPRESSORS:** Ingersoll Rand, **LIGHT PLANTS:** Ingersoll Rand, **WELDERS:** Miller, Lincoln, **GENERATORS:** Magnum, Ingersoll Rand, **SUPPORT & ACCESSORIES:** Pressure Washers, Plate Compactors, Jumping Jacks, Small Generators, Water Pumps, Plus much more, **TRUCKS:** Pickups, Dump Trucks, Ford, Chevy, **TAGALONG TRAILERS:** Various Sizes.

This is a final Golden Opportunity in 2018 to purchase late model equipment at reasonable prices and put against your 2018 income tax. **A sale you cannot miss!**

In Conjunction with Bryan's Auction Services Ltd.

WWW.BRYANSFARM.COM

SALE SITE PHONE: (519) 837-0710

Go to WWW.LYONAUCTION.COM for a Complete List, Descriptions, and Pictures



ANNOUNCING THE 26TH ANNUAL 9-DAY FLORIDA AUCTION Kissimmee (Winter Garden), FL

**Saturday, February 2 thru
Sunday, February 10 @ 9:00AM**



Now Taking Consignments



Site Phone: (407) 239-2700 • FL License: AB-1091 • FL Auctioneer: AU-1548 Jack Lyon • Office: (315)633-2944 • Fax: (315) 633-5635



Visit **WWW.LYONAUCTION.COM**
for Complete Equipment List,
Descriptions and Pictures.



America's Auction Company. Big enough for the industry leaders, yet personal enough for America's farmer.



AUCTION CALENDAR

ALL THE FOLLOWING AUCTIONS WILL BE AVAILABLE TO



1-2. Friday, November 30 & Saturday, December 1: **NEWARK, NEW JERSEY:** Very Large 2-Day Auction Very Late Model of All Types of Construction Equipment, Bridge Equipment, All Types of Trucks, Trailers, Very Large Quantity of All Types of the Best Accessories and Attachments.

3. Wednesday, December 5: **HOUSTON, TEXAS:** 1 Owner Sale. Very Late Model Cat, John Deere Construction Equipment, Trucks, Accessories, Trench Boxes, Air Compressors, Welders, and much more. (Cream of the Crop Equipment). Same Time and Place, Liquidation of Late Model Komatsu, Cat Construction Equipment, Trucks & Trailers.

4. Thursday, December 6: **HOUSTON, TEXAS:** Large 1-Owner Rentals from Job Completion Auction. Late Model Construction Equipment. All Types of Trucks, Trailers, Aerial Lifts, Large Assortment of Accessories, Support. (Low-Houred Equipment).

5. Friday, December 7: **LONG ISLAND, NEW YORK:** Rentals, Rentals. Cat, Komatsu, Earthmoving Equipment, Skid Steers, Aerial Lifts, Truck Tractors, Dump Trucks, Large Quantity Support.

6. Saturday, December 8: **PEARL RIVER, NEW YORK:** Complete Liquidation Estate Auction. Good Quality Construction & Utility Equipment. All Types of Trucks, Dumps, Truck Tractors, Service & Pickups, Large Quantity of Support & Attachments.

7. Wednesday, December 12: **DALLAS, TEXAS:** Late Model. Cat, Komatsu, John Deere Rental Fleet Equipment, Aerials, Forklifts, Attachments, Trucks and Trailers.

8. Thursday, December 13: **NEW MARTINSVILLE, WEST VIRGINIA:** Construction Job Conclusion. **HIGHLIGHTS:** Late Model Cat, John Deere, Komatsu Hydraulic Excavators, Rubber Tired Loaders, Crawler Tractors, Telescopic Forklifts, Skid Steers, Tractor Loader Backhoes, Vibratory Rollers, Attachments, Truck Tractors, Dump, Service & Pickup Trucks, Support and More.

9. Friday, December 14: **QUERETARO, MEXICO:** Late Model Cat, Case, John Deere Earthmoving Equipment, Aerial Lifts, Forklifts, Trucks and Trailers, Support, Attachments.

10. Friday, December 14: **SCRANTON, PENNSYLVANIA:** Retirement Auction. Truck Tractors, Rollbacks, Wrecker Trucks, 100+ Van Trailers (53', 48', 45'), Large Quantity of New Mack and Peterbilt Parts, Construction Equipment & Real Estate.

11. Saturday, December 15: **ATLANTIC CITY, NEW JERSEY:** Very Large Rental Construction Equipment Auction. Aerial Lifts, Forklifts, Cranes, Truck Tractors, Dump Trucks, Hydraulic Excavators, Crawler Tractors, Tractor Loader Backhoes, Equipment Trailers, Pickups & Service Trucks, Attachments & Support.

12. Wednesday, December 19: **CHICAGO, ILLINOIS:** Job Completion Auction. Cat, Case Construction Equipment, Dump Trucks, Dump Trailers, Truck Tractors, Large Quantity Shop & Support Equipment.

13. Saturday, December 22: **LAS VEGAS, NEVADA:** Very Late Model Rental Construction Equipment Auction. Trucks, Trailers, Large Quantity Booms, Scissor Lifts, Telescopic Forklifts, Hydraulic Excavators, Tractor Loader

Backhoes, Trucks, Trailers, Attachments & Support Equipment.

14. Friday, December 28: **ALBANY (GREENWICH), NEW YORK:** Late Model Rental Fleet Cat, New Holland, John Deere, Doosan Construction Equipment, Aerial Lifts, Forklifts, Utility Equipment, Attachments, Variety of Trucks & Trailers.

15. Saturday, December 29: **TORONTO, CANADA:** Late Model Rental Returns. Large Quantity of Late Model Construction Equipment Skid Steers, Tractor Loader Backhoes, Rubber Tired Loaders, Hydraulic Excavators, Crawler Tractors, Vibratory Rollers, Forklifts, Boom Lifts, Scissor Lifts, Air Compressors, Welders, Generators, Light Plants, Trucks, Trailers and Support Equipment.

16. Sunday, January 13: **MIDDLETOWN, NEW YORK:** Loss of Help Auction. Late Model Mid & Midi Size Construction and Utility Equipment. Large Quantity Support Equipment.

17. Saturday, January 19: **COLUMBUS (DELAWARE), OHIO:** Very Large Rental Construction Equipment Auction. Aerial Lifts, Forklifts, Cranes, Truck Tractors, Dump Trucks, Hydraulic Excavators, Crawler Tractors, Tractor Loader Backhoes, Equipment Trailers, Pickups & Service Trucks, Attachments & Support.

18. Friday, January 25: **QUERETARO, MEXICO:** Late Model Cat, Case, John Deere Earthmoving Equipment, Aerial Lifts, Forklifts, Trucks and Trailers, Support, Attachments.

19-27. Saturday, February 2 to Sunday February 10: **ORLANDO (KISSIMMEE), FLORIDA:** 26 Glorious Years Conducting This High Quality Sale. **THE 26TH ANNUAL 9-DAY FLORIDA AUCTION:** Where the Best Equipment is the Norm, not the Exception. The Greatest Auction On Planet Earth. Primarily selling 2015-2018 Construction Equipment, Cat, Komatsu, John Deere, Case, LinkBelt, Volvo, Atlas Copco, Aerial Equipment, Trucks and Trailers.

28. Saturday, April 13: **MONTREAL, CANADA:** Late Model Rental Returns of Construction, Utility Compact Equipment, Attachments, Trucks, Trailers, Support.

29. DTBA: **SYRACUSE, NEW YORK:** Large Forklift, Construction Equipment, Aerials, Late Model Truck Tractors, (2018) Equipment Trailers and More.

30. DTBA: **DETROIT MICHIGAN:** Late Model Aggregate, Construction Equipment, Aerials, Trucks, Trailers, Support Equipment.

31. DTBA: **CHICAGO, ILLINOIS:** 2 Auctions in 1 Day. Retirement Auction & Bankruptcy Auction. **HIGHLIGHTS INCLUDE:** Tow Trucks & Towing Equipment, Asphalt Equipment, All Types of Construction Equipment, Aerial Lifts, Forklifts, Truck Tractors, Dump Trucks..

32. DTBA: **CLEVELAND, OHIO:** Construction, Aggregate, Recycling Equipment, Trucks, Trailers, Large Quantity Support and Attachments.

33. DTBA: **BUFFALO, NEW YORK:** Retirement Auction. Complete Liquidation. Large Aggregate, Concrete Construction Equipment, Trucks, Trailers, Support Equipment.

MAIN OFFICE

315.633.2944 • 315.633.2872 • 315.633.9544
EVENINGS: (315) 637-8912, FAX: (315) 633-8010

BRANCH OFFICES

| | | | |
|-----------------|--------------|-------------------|--------------|
| ATLANTA, GA | 770.537.7386 | MOBILE, AL | 251.510.1538 |
| BRATTLEBORO, VT | 802.490.7894 | NASHVILLE, TN | 615.922.5197 |
| CHICAGO, IL | 312.724.5474 | NEW LONDON, CT | 860.924.7735 |
| COLUMBUS, OH | 614.254.5596 | OKLAHOMA CITY, OK | 405.438.3188 |
| DALLAS, TX | 972.725.7761 | PARKERSBURG, WV | 304.699.3050 |
| DENVER, CO | 515.414.2868 | RACINE, WI | 262.886.2778 |
| DES MOINES, IA | 720.277.0263 | ST. LOUIS, MO | 314.570.4127 |
| FORT WORTH, TX | 817.807.2761 | TAMPA, FL | 813.777.3273 |
| HARRISBURG, PA | 717.836.0919 | WASHINGTON, DC | 202.888.6003 |
| HOUSTON, TX | 832.450.3910 | MONTREAL, CA | 514.949.7500 |
| LAS VEGAS, NV | 702.475.4992 | OTTAWA, ON | 514.916.4656 |

FOLLOW US:   

Warranties Available On Late Model Equipment from:



CONTACT: Christine Julka
DIRECT: 315-256-0498
OFFICE: 866-662-0995
www.adiagency.com

FINANCING AVAILABLE FOR PRE-APPROVED PURCHASERS: You must have prior written approval!

SMART BUSINESS CREDIT & LEASING: For instant credit approvals, contact Customer Service at 800.798.6862, or visit our on-site trailer at select auctions. Also available is a secure online application: www.Smartbusinesscredit.com 100% financing or leasing & customized financial packages available (\$10,000 minimum).

SALES TAX: All sales are subject to sales tax.

SALES TAX EXEMPTIONS: Buyers with a VALID exemption certificate are not required to pay sales tax for equipment and miscellaneous, but MUST present a copy of their certificate at time of registration at EACH SALE.

EXPORTERS: If you take possession of your purchase in the United States, you must pay sales tax. You must provide the following in order not to be charged: Bill of Lading - All export purchases must be removed by a trucking company. The trucking company will provide a Bill of Lading with the purchases listed.

NOTE: No items will be released without this document or you may pay tax and be reimbursed once the Bill of Lading or a Dock Receipt is received.

MOTOR VEHICLES AND TRAILER EXEMPTIONS: Specific for each state. Please call office for exemption details.



7697 ROUTE 31, PO BOX 610
BRIDGEPORT, NY 13030

ADDRESS SERVICE REQUESTED

PRESORT
FIRST CLASS
U.S. POSTAGE
PAID
ROCHESTER, NY
PERMIT No. 944

All information contained in this brochure was derived from sources believed to be correct, but not guaranteed. We shall not be held liable for any typographical errors or inaccuracies in the content of this brochure. All announcements made day of sale supersede any printed material.



PLEASE SCAN
QR CODE
FOR UP-TO-DATE
CALENDAR AND
EQUIPMENT LISTS

SCRANTON, PENNSYLVANIA
FRIDAY, DECEMBER 14TH AT 9:30 AM

RETIREMENT AUCTION

ROBERT BOLUS

TRUCK TRACTORS, ROLLBACKS, WRECKER TRUCKS, 100+ VAN TRAILERS(53', 48', 45'), LARGE QUANTITY OF NEW MACK AND PETERBILT PARTS, CONSTRUCTION EQUIPMENT & REAL ESTATE



ATLANTIC CITY, NEW JERSEY (AC RACE TRACK)
SATURDAY, DECEMBER 15TH AT 9:00 AM

VERY LARGE RENTAL CONSTRUCTION EQUIPMENT AUCTION

AERIAL LIFTS, FORKLIFTS, CRANES, HYDRAULIC EXCAVATORS, CRAWLER TRACTORS, TRACTOR LOADER BACKHOES, EQUIPMENT TRAILERS, TRUCK TRACTORS, DUMP TRUCKS, PICKUPS & SERVICE TRUCKS, ATTACHMENTS & SUPPORT

HercRentals™



AHERN RENTALS



315.633.2944

lyonauction.com

lyonauctionlive.com

lyonmexico.com